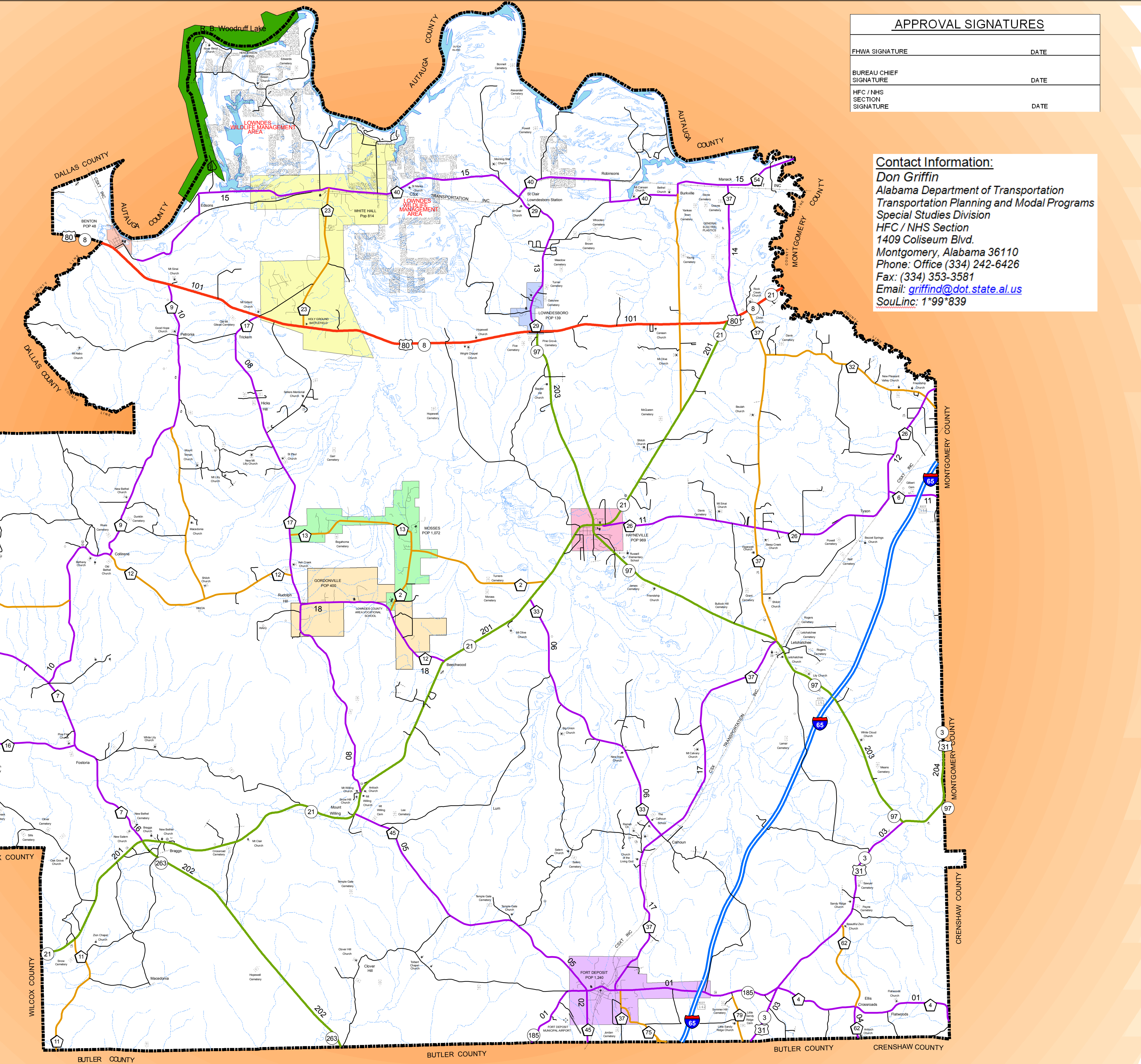


LOWNDES COUNTY HIGHWAY FUNCTIONAL CLASSIFICATION SYSTEM

Miscellaneous Items

PUBLIC SERVICE FACILITIES	AIRPORTS
COURTHOUSE	AIRPORT-GENERAL
POST OFFICE	AIRPORT-MILITARY
WATER TANK OR STAND PIPE	AIRPORT-COMPLET FACILITIES
PIPE LINE-GAS	AIRPORT-LIMITED FACILITIES
PIPE LINE-OIL	HELIPAD
PIPE LINE-PETROLEUM	LANDING AREA OR STRIP
TRANSMISSION LINE	
POWER PLANT	
POWER SUB-STATION	
UNDERGROUND TELEPHONE CABLE	
RADIO OR TELEVISION STATION	
DEPARTMENT OF TRANSPORTATION OFFICE	
RADIO: MICROWAVE TOWER, ETC.	
POLICE OR SHERIFF STATION	
STATE TROOPER HEADQUARTERS	
BOATER STATION	
FIRE STATION	
	INDUSTRIAL
	INDUSTRIAL PARK
	WAREHOUSE OR SHED
	WINE BREWERY
	OIL OR GAS WELL
	STORAGE TANKS
	PUMPING STATION-OIL OR GAS
	GASLIFT OR PUMPING STATION
	CHURCHES, CEMETERIES, ETC.
	CHURCH
	CHURCH AND SCHOOL
	CEMETERY
	CHURCH AND CEMETERY
	NURSING OR REST HOME
	HOSPITAL
	CONSERVATION AND RECREATION
	ROCKY OR SANDY BEACH
	PLAYGROUND, BALL FIELD, ETC.
	BATHING BEACH OR BEACHHEAD POOL
	SCENIC SITE-OVERLOOK
	CAMP OR LODGE
	SMALL PARK (SP-STATE) (CP-COUNTY)
	FOREST
	OBSERVATION OR LOOKOUT TOWER
	PROMENADE WALK AND LOOKOUT TOWER
	FISH HATCHERY-BASIN
	FISH HATCHERY-POND
	GOLF COURSE OR COUNTY CLUB
	YACHT CLUB OR MARINA
	AMUSEMENT PARK OR MALL
	FAIRGROUND, RACE TRACK OR SPEEDWAY
	DEVILDEN THEATRE
	DOMESTIC MINE
	LIFE SAVER STATION
	DOCK GARD STATION
	WALK TO TRAILS-SIGNING-HISTORIC
	HORSEBACK RIDING AND SKIING
	EDUCATIONAL AND CORRECTIONAL
	SCHOOLHOUSE
	OTHER EDUCATIONAL INST. BUILDINGS
	TOWN HALL OR COMMUNITY CENTER
	AGRICULTURAL EXPERIMENT STATION
	PRISON OR CORRECTIONAL INSTITUTION
	MISCELLANEOUS
	ARMORY
	ARSENAL
	LANDFILL
	SCRAP METAL YARD
	LANDFILL-ARMED
	SEWER DISPOSAL PLANT
	REST HOME OR NURSING CENTER
	TRANSMISSION STATION
	BI-OPS STATION
	TRANSMISSION-OPS STATION
	BENCH MARK-HEIGHT ELEVATION
	DOT INDICATES ACTUAL LOCATION OF FEATURE WHERE SPACE IS NOT AVAILABLE



APPROVAL SIGNATURES

FHWA SIGNATURE	DATE
BUREAU CHIEF SIGNATURE	DATE
HFC / NHS SECTION SIGNATURE	DATE

Contact Information:
Don Griffin
 Alabama Department of Transportation
 Transportation Planning and Modal Programs
 Special Studies Division
 HFC / NHS Section
 1409 Coliseum Blvd.
 Montgomery, Alabama 36110
 Phone: Office (334) 242-6426
 Fax: (334) 353-3581
 Email: griffind@dot.state.al.us
 SouLinc: 1*99*839

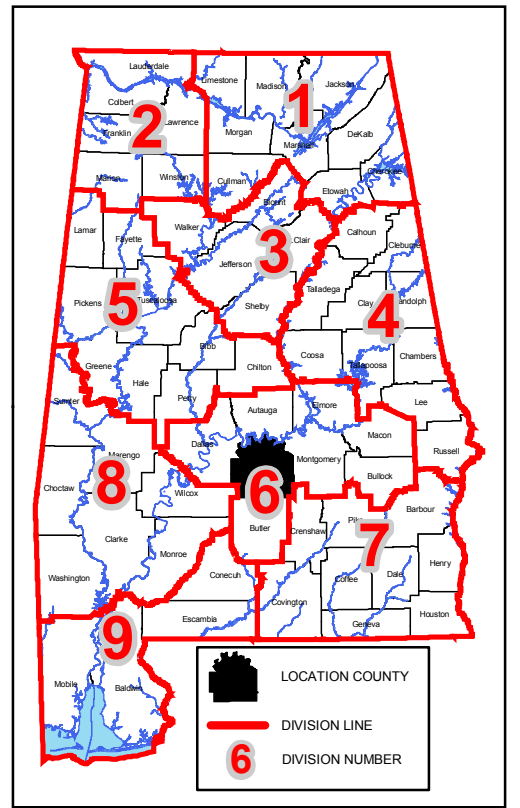
Legend

Functional Classification	Proposed Functional Class
Urban Interstate - 11	Urban Interstate - 11
Freeway - 12	Freeway - 12
Urban Principal Arterial - 14	Urban Principal Arterial - 14
Urban Minor Arterial - 16	Urban Minor Arterial - 16
Collector - 17	Collector - 17
Rural Interstate - 1	Rural Interstate - 1
Rural Principal Arterial - 2	Rural Principal Arterial - 2
Rural Minor Arterial - 6	Rural Minor Arterial - 6
Rural Major Collector - 7	Rural Major Collector - 7
Rural Minor Collector - 8	Rural Minor Collector - 8

Miscellaneous Items

GIS.OpenWater_ALDOTDivisions	INTERSTATE	Lowndes County Cities
GIS.NHD_by_County	US ROUTES	Benton
GIS_Swamp_Marsh_HR_NHDWB_County	STATE ROUTES	Fort Deposit
TRANSDATA.urban_large	COUNTY ROADS	Gordonsville
TRANSDATA.urban_large_study	FOREST ROADS	Hayneville
TRANSDATA.urban_small		Lowndesboro
GIS.County		Mosses
		Whitehall

MAP SCALE
 SEE SCALE ON MAP



Disclaimer of Liability
 Due to the scale of this map neither the Alabama Department of Transportation (ALDOT) or the State of Alabama nor any employees and contractors thereof, make any warranty, expressed or implied, or assumes any legal liability, or responsibility, for the accuracy, completeness, or usefulness of any information contained on this map.

LOWNDES COUNTY -43

ALABAMA DEPARTMENT OF TRANSPORTATION
 Highway Functional Classification
 Transportation Planning / Modal Programs Bureau



FHWA APPROVAL DATE		DRAWN BY: D.H. GRIFFIN	
DATE November 23, 2004		DATE DRAWN: NOVEMBER 13, 2008	
NAME	DATE	COMMENTS	

Legend
 GIS.Federal_Lands_2001

