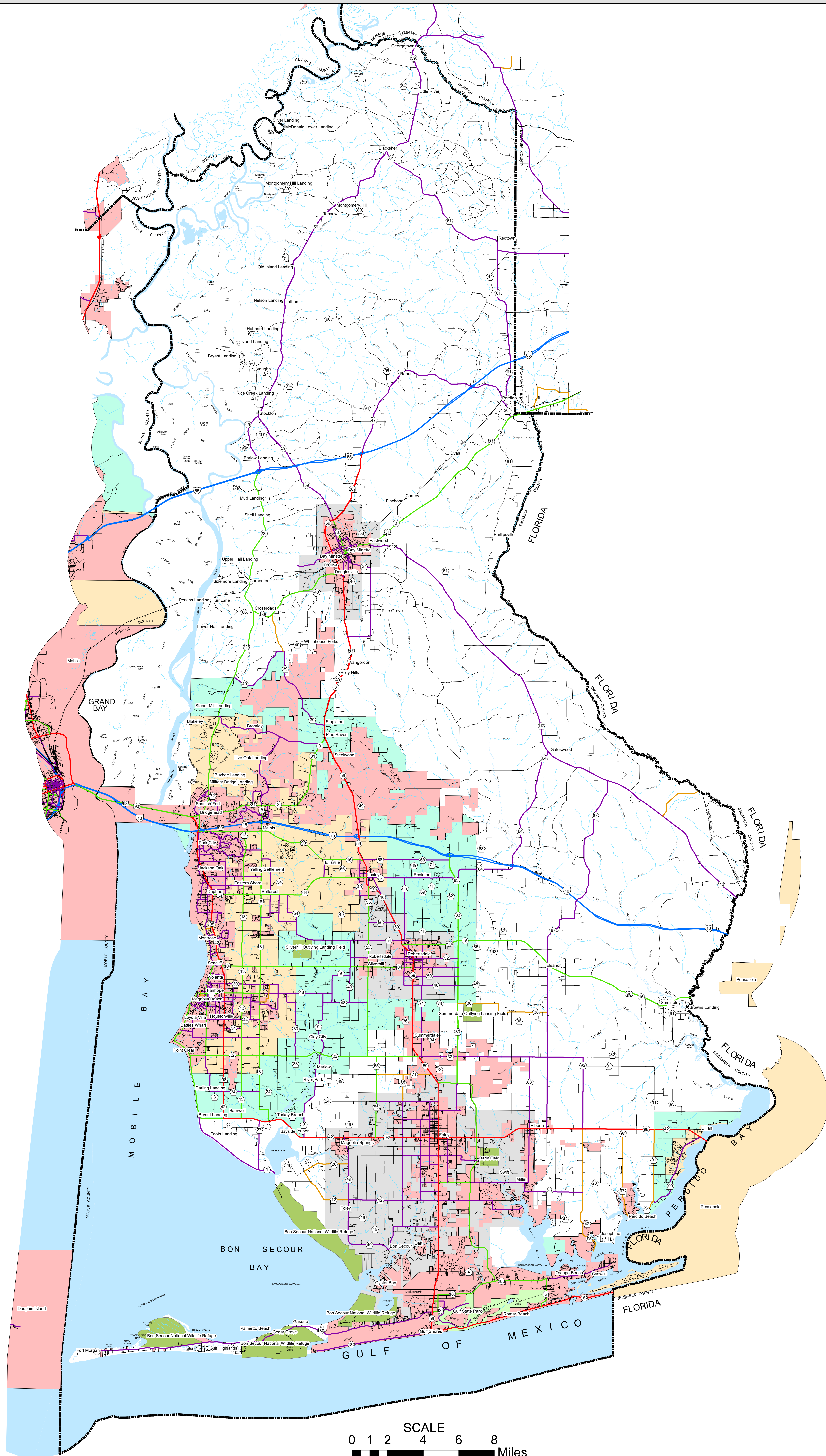
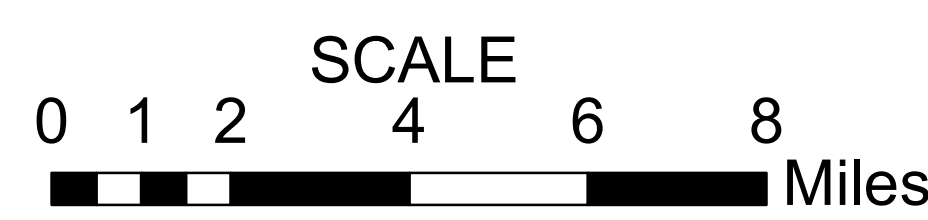


BALDWIN COUNTY HIGHWAY FUNCTIONAL CLASSIFICATION SYSTEM



APPROVED SIGNATURES	
Federal Highway Administration	DATE
Maintenance Engineer	DATE

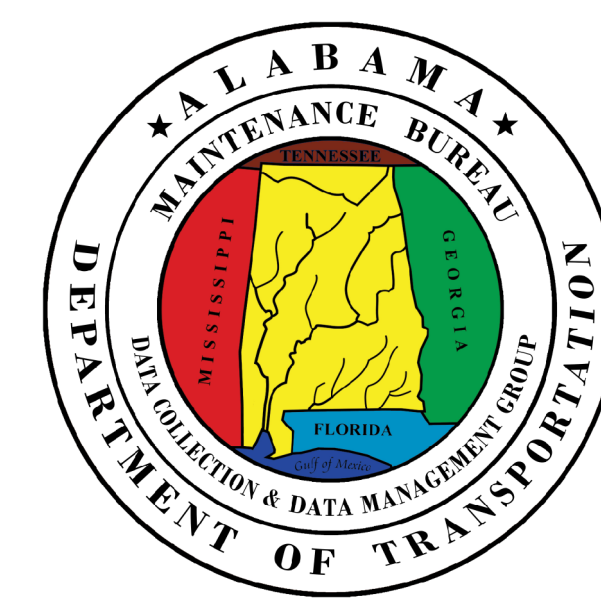
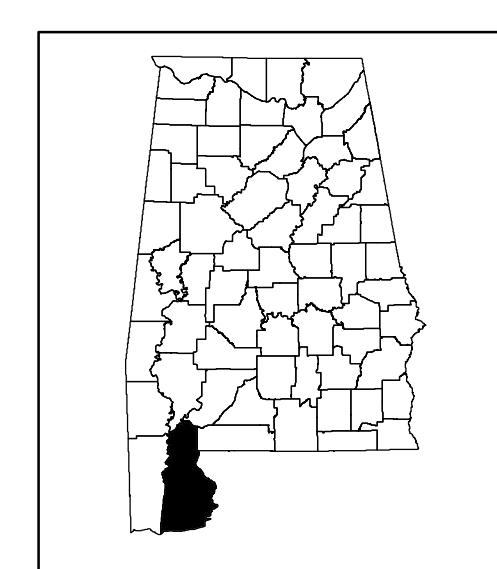


REVISIONS	
DATE	COMMENTS
July, 2021	Added New Legend and Border

BALDWIN COUNTY ALABAMA DEPARTMENT OF TRANSPORTATION Highway Functional Classification

Disclaimer of Liability
Due to the scale of this map neither the Alabama Department of Transportation (ALDOT) or the State of Alabama nor any employees and contractors thereof, make any warranty, expressed or implied, or assume any legal liability, or responsibility, for the accuracy, completeness, or usefulness of any information contained on this map.

FHWA APPROVAL DATE
DATE: July, 2021



LEGEND	
Highway Functional Classification	
Blue line	Interstate
Orange line	Principal Arterial-Other Freeways and Expressways
Red line	Principal Arterial-Other
Green line	Minor Arterial
Purple line	Major Collector
Yellow line	Minor Collector
Grey line	Local Road
Light blue line	Proposed Road
Blue area	Open Water
Light blue area	Large Urban Area
Light green area	Large Urban Study Area
Light grey area	Small Urban Area
Light green area	State Parks
Black line	County Boundary
Black line	Railroad
Shield symbol	INTERSTATE
Square symbol	U.S.
Circle symbol	STATE
Circle symbol	COUNTY
Red outline	City Limit
Green outline	Federal Lands

