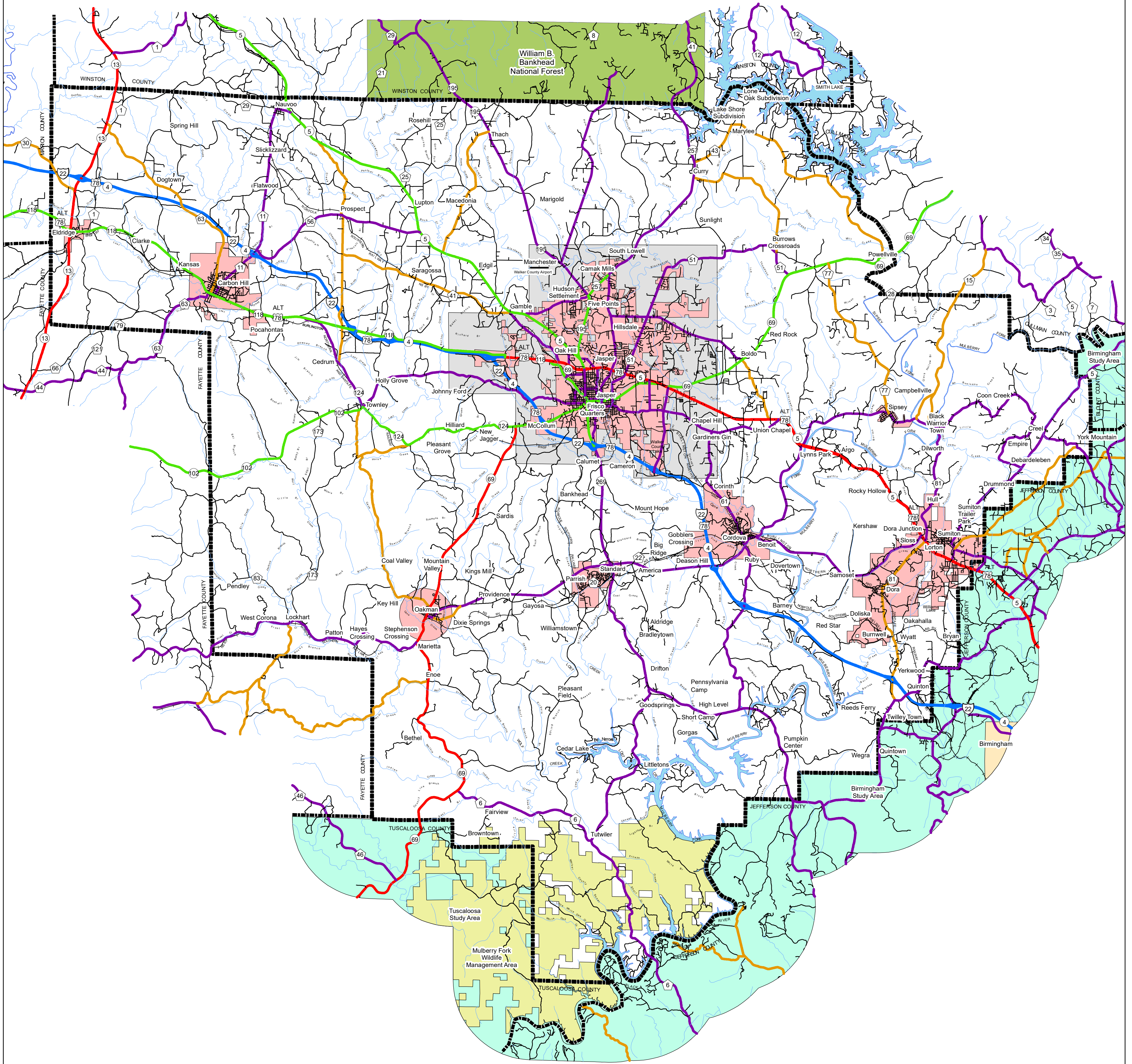
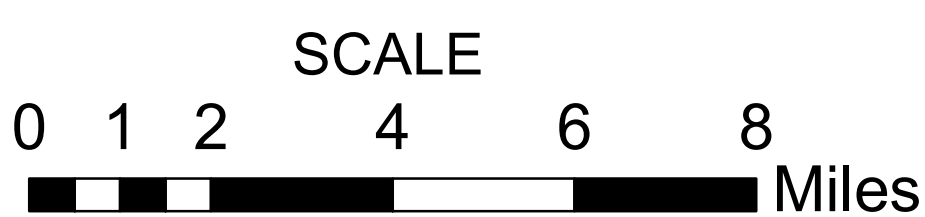


WALKER COUNTY HIGHWAY FUNCTIONAL CLASSIFICATION SYSTEM



APPROVED SIGNATURES	
Federal Highway Administration	DATE
Bureau Chief Maintenance	DATE



WALKER COUNTY ALABAMA DEPARTMENT OF TRANSPORTATION Highway Functional Classification



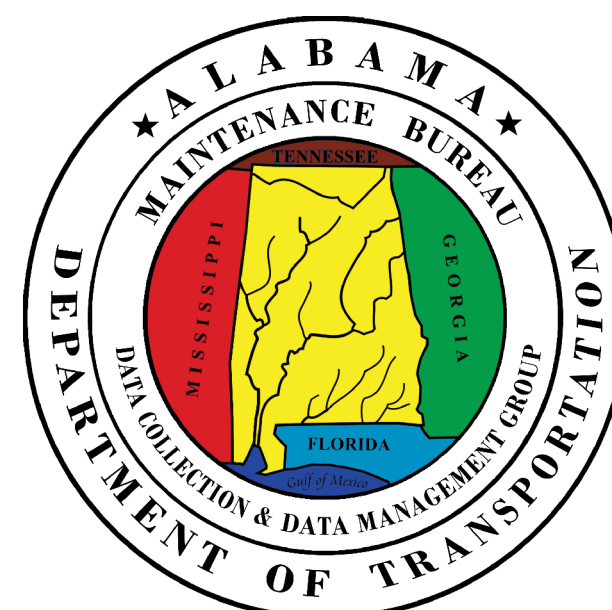
Federal Highway Administration
Alabama Division Office

REVISIONS

DATE	COMMENTS
August, 2022	Added New Border and Legend

Disclaimer of Liability:
Due to the scale of this map neither the Alabama Department of Transportation (ALDOT) or the State of Alabama nor any employee and contractor thereof make any warranty, expressed or implied, or assume any legal liability or responsibility for the accuracy, completeness, or usefulness of any information contained on this map.

FHWA APPROVAL DATE
DATE: February, 2023



LEGEND

1 Interstate	Railroad
2 Principal Arterial-Other Freeways and Expressways	INTERSTATE
3 Principal Arterial- Other	U.S.
4 Minor Arterial	STATE
5 Major Collector	COUNTY
6 Minor Collector	City Limit
7 Local Road	County Boundary
Proposed Road	
Open Water	
Streams / Creeks	
Wildlife Management Area	
Large Urban Area	
Large Urban Study Area	
Small Urban Area	
Federal Lands	