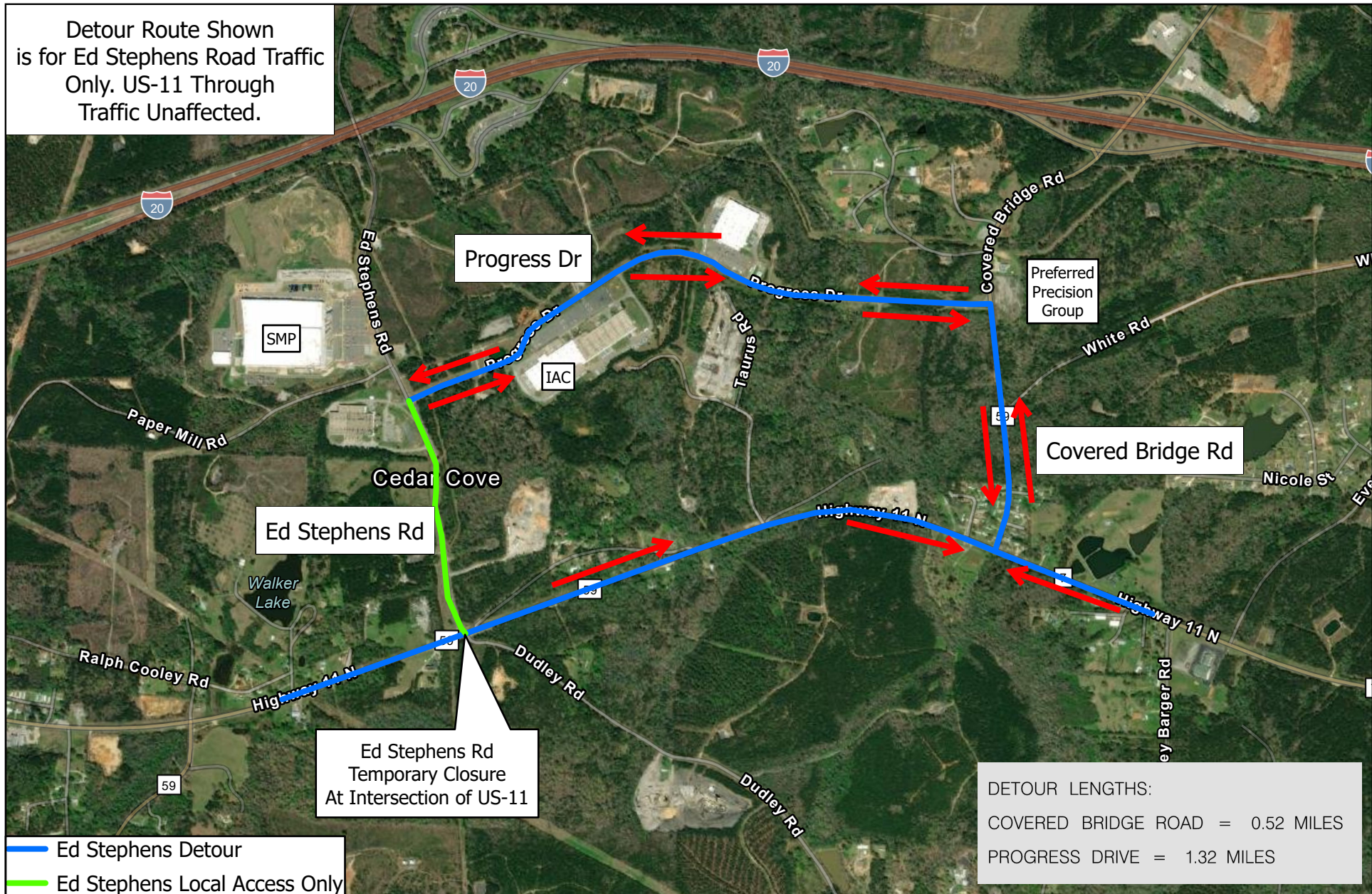
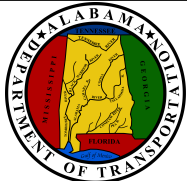


Detour Route Shown  
is for Ed Stephens Road Traffic  
Only. US-11 Through  
Traffic Unaffected.



DETOUR LENGTHS:  
COVERED BRIDGE ROAD = 0.52 MILES  
PROGRESS DRIVE = 1.32 MILES

— Ed Stephens Detour  
— Ed Stephens Local Access Only



**DETOUR MAP - ED STEPHENS RD**  
**PROJECT NO. RACR-069-000-041**  
**REPLACEMENT OF CONCRETE PAVEMENT ON US-11**  
**AT LOWER COALING, MIDDLE COALING,**  
**HAGLER COALING, AND ED STEPHENS**

