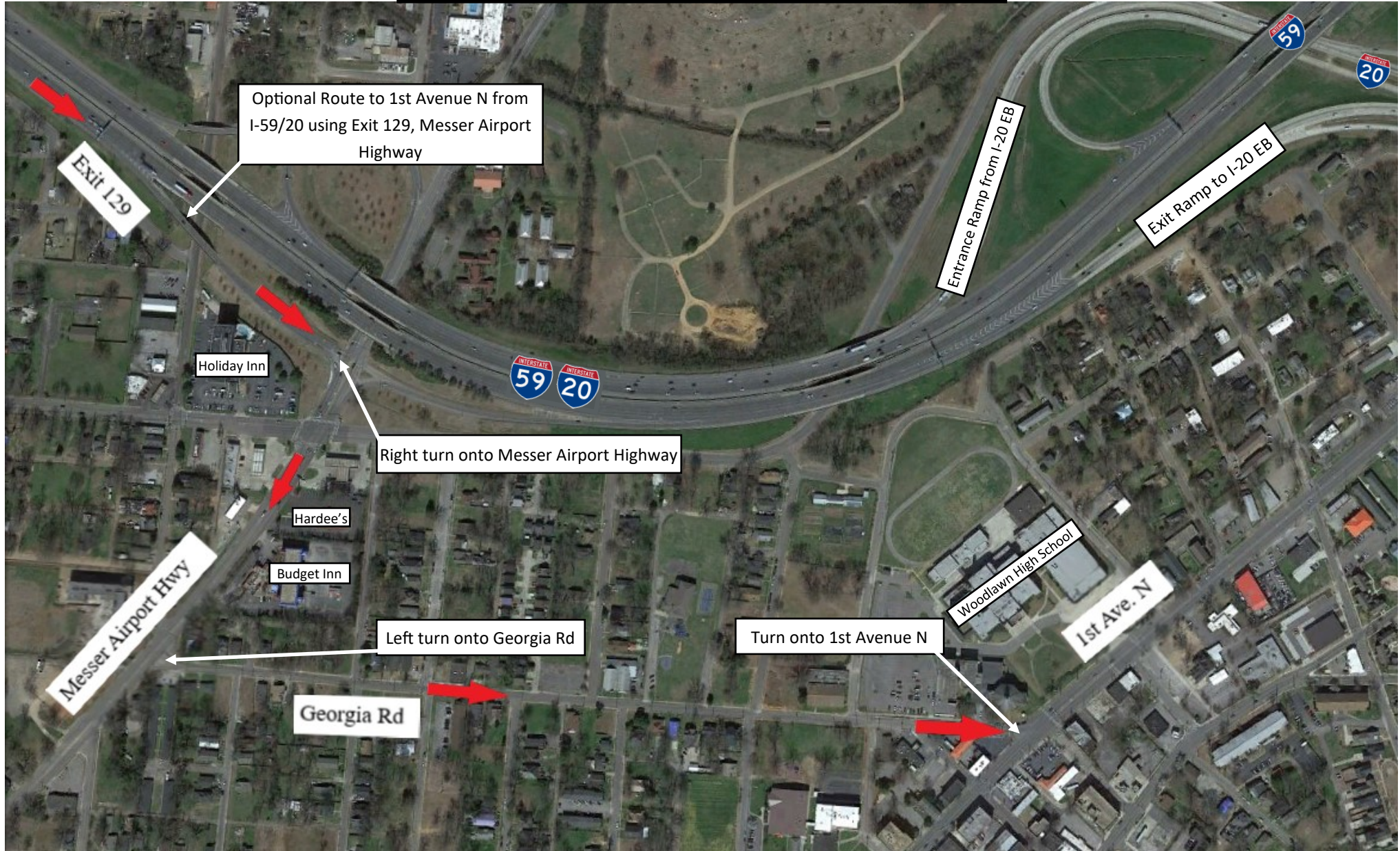
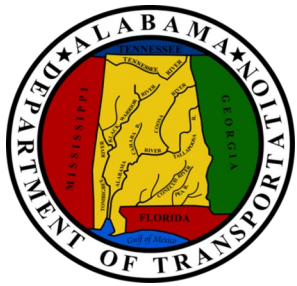


## IM-I020(365)

Planing, Overlay and Striping on I-20 from the East End of the bridge over 1st Avenue North to the East end of the bridge over SR-4(US-78) at Exit 140  
(Including permanent closure of I-20 Ramp – Exit 130B)





## IM-I020(365)

Planing, Overlay and Striping on I-20 from the East End of the bridge over 1st Avenue North to the East end of the bridge over SR-4(US-78) at Exit 140  
(Including permanent closure of I-20 Ramp – Exit 130B)

