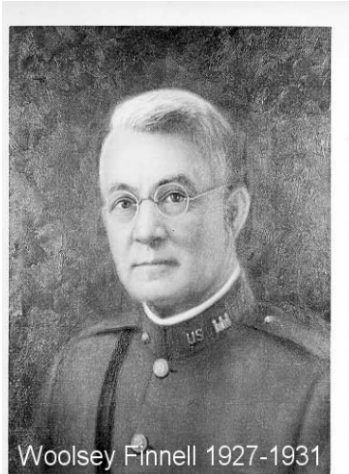


# Woolsey Finnell Fact Sheet



Woolsey Finnell 1927-1931

**Woolsey Finnell** was a civil engineer and contractor who served as City Engineer for Tuscaloosa and as Probate Judge of Tuscaloosa County from 1923 to 1927. He was born in Duncanville, AL and graduated from University of Alabama in 1887 with a degree in Engineering. During World War I, Finnell reached the rank of colonel, was noted for meritorious service by Gen. John J. Pershing and received the French decoration Legion of Honor. One of his many works include the lift span of the old Warrior River drawbridge, which opened in 1922 and ran until 1973.

At the opening of the McFarland Boulevard Bridge over the Black Warrior River in 1961 it was named for Woolsey Finnell. Today the Finnell Bridge is recommended as eligible for listing in the National Register of Historic Places (NRHP) under Criterion A; in the area of transportation history and Criterion C; in the area of engineering. It is a significant and intact representative of one of the ten bridges built by the Alabama Bureau of Bridges between 1950 and 1961.

