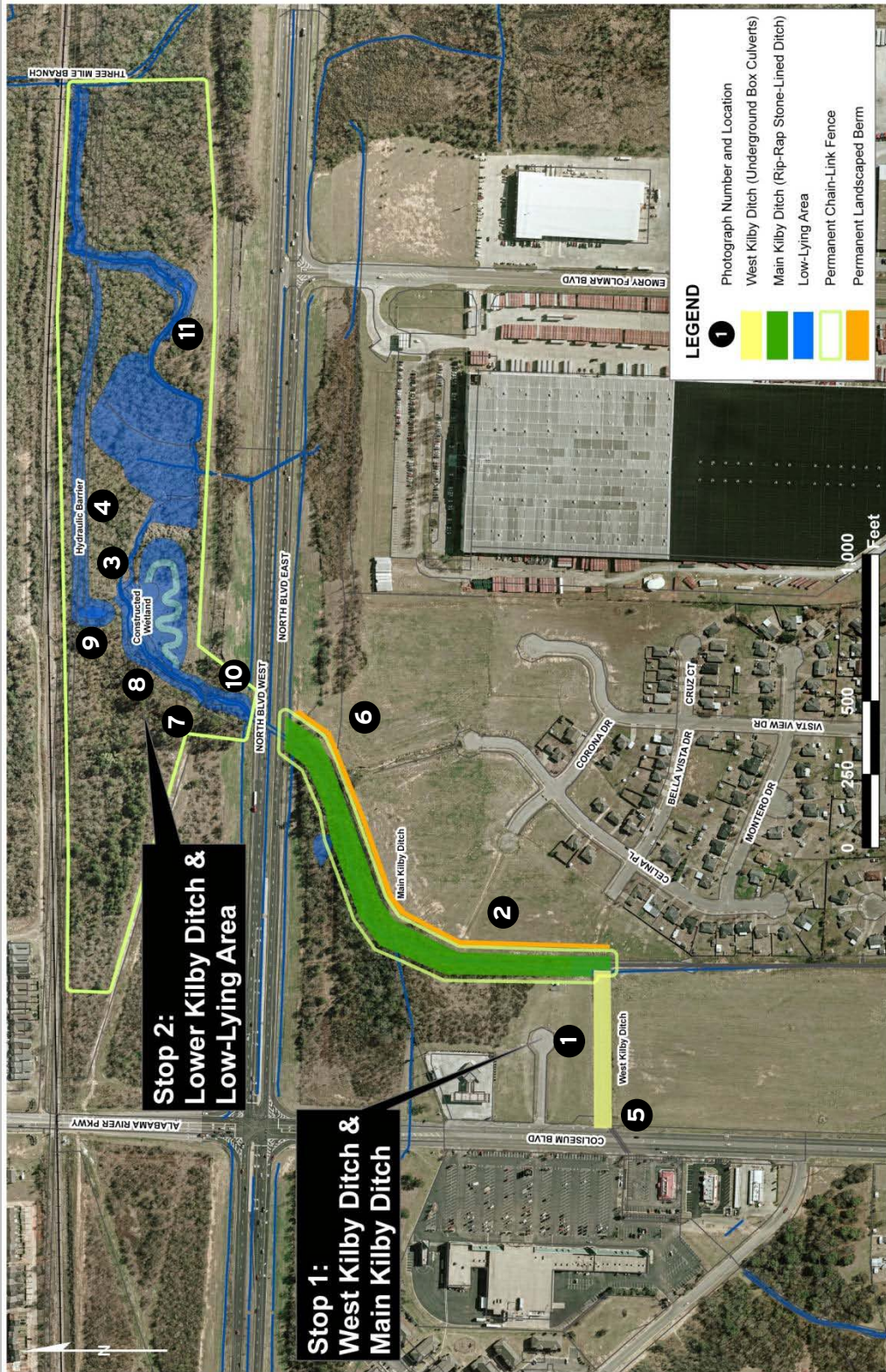




Kilby Ditch Remediation Project Observation Guide May 2010







Alabama Department of Transportation

Stop 1: West and Main Kilby Ditch

West Kilby Ditch



Before



After

Main Kilby Ditch



Before



After





Alabama Department of Transportation

Stop 2: Constructed Wetland and Hydraulic Barrier (Low-Lying Area)



FOR FURTHER INFORMATION ABOUT THIS PROJECT

Please call the Coliseum Boulevard Plume 24-Hour Information Line:

(334) 353-6635

Or visit the ALDOT Coliseum Boulevard Plume Web Site at:

<http://www.dot.state.al.us>

