



Kay Ivey
GOVERNOR

ALABAMA DEPARTMENT OF TRANSPORTATION

AERONAUTICS BUREAU
1409 COLISEUM BOULEVARD
MONTGOMERY, ALABAMA 36130
PHONE (334) 242-6820
FAX (334) 353-6540



John R. Cooper
TRANSPORTATION DIRECTOR

January 25, 2018

The Honorable Fletcher Fountain, Sr.
Mayor of Fort Deposit
P.O. Box 260
Fort Deposit, Alabama 36032

**Subject: Annual Inspection Report
Fort Deposit/Lowndes County Airport**

Dear Mayor Fountain:

An inspection of the Fort Deposit/Lowndes County Airport was conducted by personnel of the Alabama Department of Transportation Aeronautics Bureau on January 23, 2018. The purpose of the inspection was to update the information currently on file regarding the airport and to ascertain compliance with the rules and regulations of the Alabama Department of Transportation governing licensed public-use airports within the State of Alabama.

Attached you will find a copy of the Annual Inspection Report for the airport. As noted in the report, the airport ***does not meet*** the requirements for the issuance of an operating license. The operating license for the airport is being withheld pending the required actions necessary to correct the safety deficiencies. The Code of Alabama 23-1-375 prohibits the operation of an airport for which a license has not been issued.

There are numerous obstructions to both approaches that pose safety hazards to landing and departing aircraft and must be removed. Please note that the obstructions surveyed are representative of the obstructions and are not limited to those identified in the report. The runway markings are in poor condition and should be cleaned or replaced to meet appropriate standards. It should also be noted that due to the condition of the airport's lighting system, the airport is unsafe for night operations.

It should be noted that several of the violations identified in the inspection report have been re-occurring for several years and are serious safety violations. Evidence of unauthorized access to the airport poses risks to the safety and security of any aircraft operating out of the airport. The pavement condition poses a serious safety concern for any aircraft that operates in and out of the Ft. Deposit Airport. It is imperative that the bush and other vegetation be removed from the runway and that preventative measures be established to ensure that this does not occur again.

Due to these safety violations, the Town of Fort Deposit must contact this office with a written timetable and plan of action for correcting the license deficiencies noted in the attached Annual Inspection Report no later than March 1, 2018. Because of the re-occurring serious safety violations, the Aeronautics Bureau recommends the airport be closed until all safety deficiencies have been corrected. To close the airport, please contact the Lockheed Martin Flight Service Station at 1-877-487-6867 and issue a Notice To Airmen (NOTAM) notifying pilots of the airport closure. Failure to correct the safety issues noted in this report may result in the Aeronautics Bureau issuing a Mandatory Closure of the Fort Deposit/Lowndes County Airport.

If you should have any questions concerning the inspection or corrective actions, please do not hesitate to contact the Aeronautics Bureau at (334) 242-6820.

Sincerely,

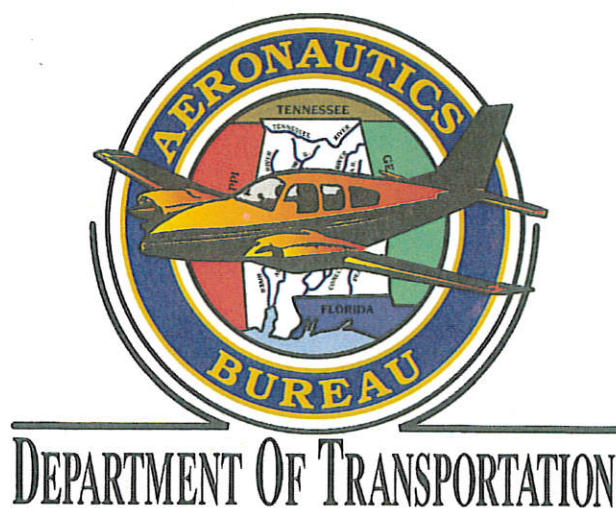
A handwritten signature in blue ink, appearing to read "John C. Eagerton IV".

John C. Eagerton IV, D.P.A.
Chief, Aeronautics Bureau

CC: Mr. William F. Patty, Esq.
ALDOT Chief Counsel

Mr. Kevin Morgan, P. E.
FAA Jackson ADO

JANUARY 23, 2018



ANNUAL INSPECTION REPORT



FORT DEPOSIT/LOWNDES COUNTY AIRPORT

FORT DEPOSIT, ALABAMA

TABLE OF CONTENTS

INTRODUCTION.....	PAGE 1
INSPECTION METHODOLOGY.....	PAGE 1
LICENSE STATUS.....	PAGE 2
APPROACH / DEPARTURE PATHS.....	PAGE 2
PRIMARY SURFACE.....	PAGE 4
RUNWAY SAFETY AREA.....	PAGE 6
AIRPORT MARKINGS.....	PAGE 8
WIND DIRECTION INDICATOR.....	PAGE 9
AIRPORT LIGHTING.....	PAGE 10
RUNWAY, TAXIWAY AND APRON CONDITIONS.....	PAGE 11
FUELING AREA REQUIREMENTS.....	PAGE 14
PROHIBITED ACTIVITIES.....	PAGE 15
SUMMARY.....	PAGE 16
APPENDIX 1.....	PAGE 17
APPENDIX 2.....	PAGE 18
APPENDIX 3.....	PAGE 19

Annual Inspection Report Fort Deposit/Lowndes County Airport Fort Deposit, Alabama

January 23, 2018

Introduction:

Code of Alabama 23-1-357(c). The department may perform such acts, issue and amend such orders and make, promulgate, or amend general or special rules, regulations, and procedures and establish minimum standards, consistent with the provisions of this article as it shall deem necessary to carry out the provisions of this article and to perform its duties hereunder, all commensurate with and for the purpose of protecting and insuring the general public interest, health, welfare, and safety. (Act 2000-220, 10.)

In accordance with the provisions of the Code of Alabama 23-1-357(c) an inspection of the Fort Deposit/Lowndes County Airport was conducted by Ms. Jordan Garner of the Alabama Department of Transportation Aeronautics Bureau on January 23, 2018.

The corrective actions that may be prescribed in this inspection report do not relieve the airport owner from compliance with any other Federal, State or local laws, ordinances or regulations that may be applicable. It is the responsibility of the airport owner to be aware of and obey all Federal, State or local laws, ordinances or regulations that may have a bearing on the corrective actions that may be specified in this report.

Inspection Methodology:

The inspection of the required State Approach/Departure Path and Federal Runway Protection Zones was accomplished by the use of approved engineering methods and equipment. The angles, locations and heights of trees or other objects within these areas were derived by the use of a Theodolite and electronic distance measuring device.

All other areas of the inspection were conducted visually and photographed for reference purposes.

Annual Inspection Report Fort Deposit/Lowndes County Airport Fort Deposit, Alabama

January 23, 2018

License Status:

Code of Alabama 23-1-375(a). ...a person or municipality may not operate an airport, restricted landing area, or other air navigation facility without a license issued by the department.

Based upon the findings of the inspection conducted on January 23, 2018, it was determined that the airport **does not meet** the requirements for the issuance of an operating license.

The inspection was conducted on the airport under the provisions of the Administrative Code for the following areas:

1. Approach and Departure Paths Administrative Code 450-9-1-.12(1) (See Appendix 1)

State Licensing Standards:

- For all hard surface runways the approach and departure path begins 200 feet from the runway end (runway threshold).
- The approach and departure path for all runways slopes up at a ratio of 20:1.
- All penetrations of the approach and departure paths, whether natural or manmade, constitute an obstruction to navigation and must be removed.
- The land beneath the approach and departure path must be controlled by the airport owner. This is accomplished by ownership of the property in fee simple or by written perpetual agreement with the owner of the land.

Inspection Results: *VIOLATION*

- Runway 33 – Trees identified as Tree #3 and Tree #6 are obstructions to the ALDOT 20:1 Approach/Departure Path (See Photo #1 Appendix 2).
- Runway 15 – Trees identified as Tree #6, Tree #9, Tree #10, and Tree #11 are obstructions to the ALDOT 20:1 Approach/Departure Path (See Photo #2, Appendix 3). Trees identified as Tree # 5 and Tree # 8 are not obstructions but will be obstructions by next year if not removed.

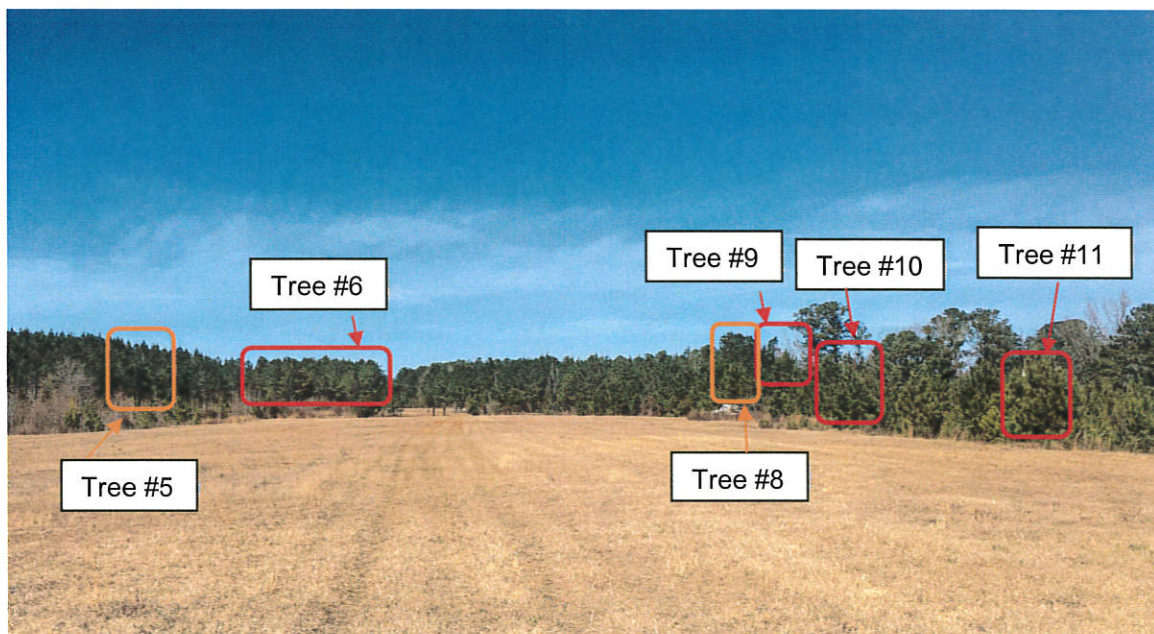
Annual Inspection Report Fort Deposit/Lowndes County Airport Fort Deposit, Alabama

January 23, 2018

Photo # 1 – Runway 33 Approach



Photo # 2 – Runway 15 Approach



Annual Inspection Report Fort Deposit/Lowndes County Airport Fort Deposit, Alabama

January 23, 2018

Required Action:

- Remove all obstructions to the 20:1 ALDOT Approach/Departure Path.

2. Primary Surface Administrative Code 450-9-1-.12(2)

State Licensing Standards:

- Primary Surface (See Appendix 1): The primary surface is 250 feet wide, centered on the runway centerline and extends 200 feet past the end of the marked runway. The primary surface is required to be free of all obstructions, manmade or natural. The only allowable objects are runway lights, guidance signs, or navigation equipment that by function is required to be within the primary surface boundaries.

Inspection Results: **VIOLATION**

- The primary surface is obstructed by multiple trees on the northwest side of the Runway 15 approach (See Photo #3, Photo #4, and Appendix 2).
- Trees and brush on the southeast side of Runway 35 is also obstructing the Primary Surface (See Photo #5 and Appendix 3).

Required Action:

- Remove overgrown vegetation.

**Annual Inspection Report
Fort Deposit/Lowndes County Airport
Fort Deposit, Alabama**

January 23, 2018

Photo #3 – Primary Surface

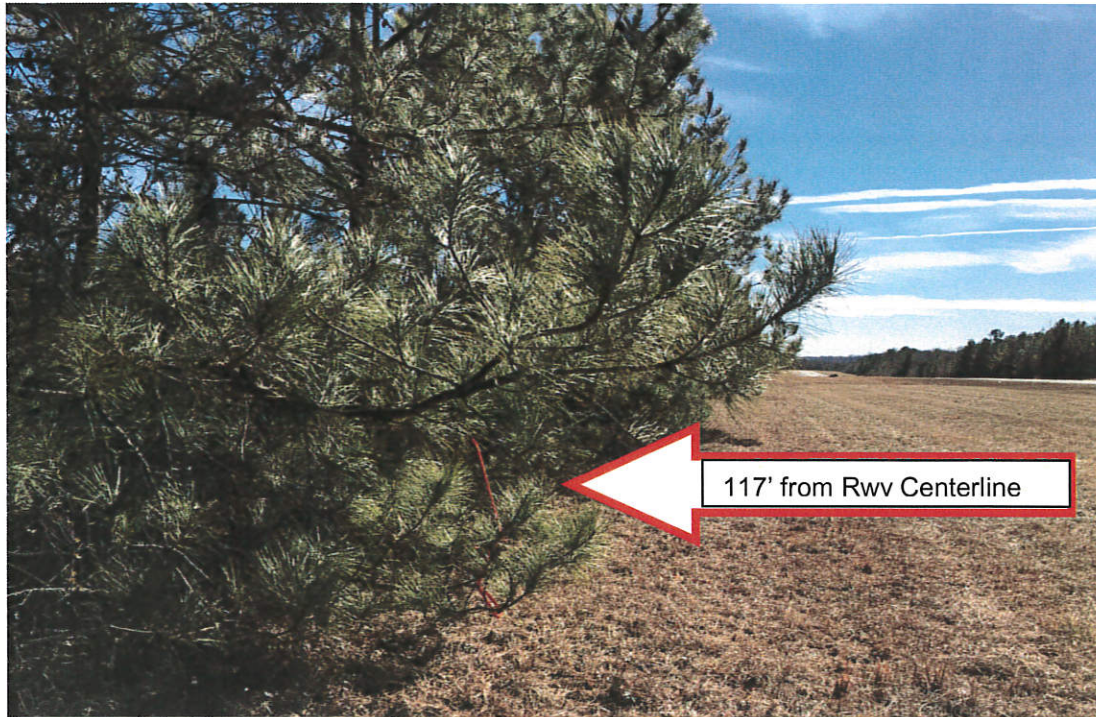
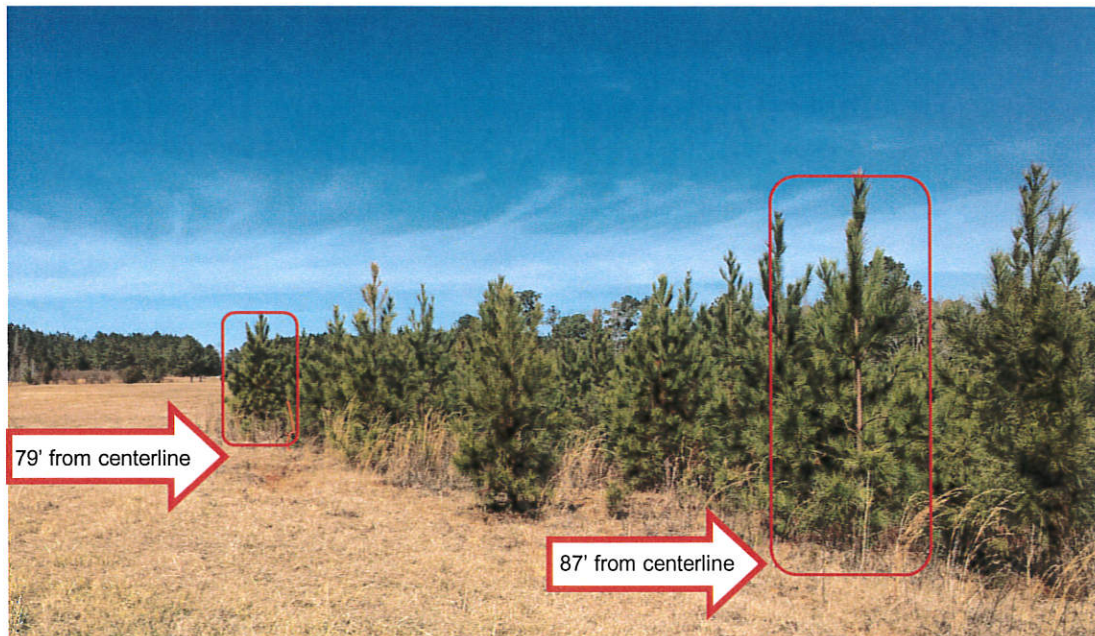


Photo #4 – Primary Surface



Annual Inspection Report Fort Deposit/Lowndes County Airport Fort Deposit, Alabama

January 23, 2018

Photo #5 – Primary Surface



3. Runway Safety Area Administrative Code 450-9-1-.12(3)

State Licensing Standards:

- Runway Safety Area (Appendix 1): All runways are required to maintain an obstruction free area adjacent to each runway. This area is 120 feet wide, centered on the runway centerline, and extends for a distance of 200 feet past the runway end. The area must be compacted and graded smooth with no ruts, humps, depressions or other potentially hazardous surface variations. The slope along the longitudinal centerline shall not exceed a rise or fall of three percent in elevation relative to the runway end elevation. The lip from the top of the pavement to the grade adjacent to the runway should not exceed 3 inches.

Annual Inspection Report Fort Deposit/Lowndes County Airport Fort Deposit, Alabama

January 23, 2018

Inspection Results: **VIOLATION**

- The runway safety area does not meet state licensing requirements. There is evidence that vehicles have been driving through the safety area of both runway approaches to access the runway and airport property (See Photo #6 and #7).

Required Action:

- Prevent unauthorized access within the Runway Safety Area.

Photo #6—Driving in RSA



Annual Inspection Report Fort Deposit/Lowndes County Airport Fort Deposit, Alabama

January 23, 2018

Photo #7—Driving in RSA



4. Airport Markings Administrative Code 450-9-1-.12(4)

State Licensing Standards:

- Airport Markings: All runways are required to be marked in a manner identifying the boundaries of the landing areas. The runway markings must be painted white and be maintained in a legible condition.

Inspection Results:

- The airport markings are in poor condition due to fading and algae growth (See Photo #8).

Maintenance Required:

- Clean markings. If unable to clean, markings should be replaced in accordance with FAA AC 150/5340-1L.

Annual Inspection Report Fort Deposit/Lowndes County Airport Fort Deposit, Alabama

January 23, 2018

Photo #8 – Basic Markings Rwy 33



5. Wind Direction Indicator Administrative Code 450-9-1-.12(5)

State Licensing Standards:

- Wind Direction Indicators: All airports are required to have an operational wind direction indicator. It must be installed in a highly visible area and free from obstructions to ensure true wind direction and velocity. Night operations require the indicator be lighted.

Inspection Results: **Violation**

- The wind direction indicator (wind cone) is incapable of providing accurate wind data due to obstruction by trees (See Photo #9).

Required Action:

- Remove all obstructions so that the wind direction indicator provides accurate wind information.

Annual Inspection Report Fort Deposit/Lowndes County Airport Fort Deposit, Alabama

January 23, 2018

Photo #9 – Wind Cone



6. Airport Lighting Administrative Code 450-9-1-.12(6)

State Licensing Standards:

- Airport Lighting: Runway lights and a lighted wind direction indicator are required for night operations. A rotating beacon is suggested. All runway, threshold, and taxiway lighting shall be maintained in operational condition and shall not be obscured by natural growth such as grass and/or weeds.

Inspection Results:

- The airport lighting system has a number of runway and threshold light fixtures broken or missing.

Maintenance Required:

- In order for night operations to be restored the airport lighting system must be repaired and maintained.

Annual Inspection Report Fort Deposit/Lowndes County Airport Fort Deposit, Alabama

January 23, 2018

7. Runway, Taxiway and Apron Conditions Administrative Code 450-9-1-.12(7)

State Licensing Standards:

- Runway, Taxiway and Apron Conditions: All airport pavement surfaces associated with aircraft operations must be kept smooth and free of any defect or obstruction that could damage an aircraft. The lip of the airport pavement surfaces must not exceed three (3) inches in elevation from the top of the pavement to the shoulder. The drop should only be enough to allow sufficient drainage and not pose a control problem for aircraft exiting the runway. The aircraft parking apron is for the operation and parking of aircraft only and should be smooth and free of obstructions or defects that could cause damage to aircraft during operations.

Inspection Results: **VIOLATION**

- The airport pavement surfaces are in POOR condition with most paving joint cracks containing vegetation and moderate raveling over the majority of the runway surface (See Photo #10).
- Bushes with thick limbs are growing through pavement cracks on the Runway 33 identifiers that pose series safety hazards to landing aircraft (See Photo #11, #12). (iPhone 6s for size reference)
- Rutting and depressions around Runway centerline are causing ponding issues throughout runway surface (See Photo #13).
- Centerline joint cracking is widening and creating foreign object debris (FOD) (See Photo #14).

Required Action:

- Eradicate the vegetation, clean and seal the cracks.
- Remove FOD runway.
- It is recommended that action be taken to ensure pavement safety standards meet the requirements of the Aeronautics Bureau. Pavement failure will result in the immediate closure of the airfield by personnel of the Alabama Department of Transportation Aeronautics Bureau.

**Annual Inspection Report
Fort Deposit/Lowndes County Airport
Fort Deposit, Alabama**

January 23, 2018

Photo #10—Joint cracking containing vegetation



Photo #11—Brush growing through Runway 33 Identifiers



**Annual Inspection Report
Fort Deposit/Lowndes County Airport
Fort Deposit, Alabama**

January 23, 2018

Photo #12— Brush growing through Runway 33 Identifiers



Photo #13—Rutting/Ponding on Runway



**Annual Inspection Report
Fort Deposit/Lowndes County Airport
Fort Deposit, Alabama**

January 23, 2018

Photo #14—Centerline



8. Fueling Area Requirements
Administrative Code 450-9-1-.12(8)

State Licensing Standards:

- Signs should be posted prohibiting open flames or smoking in fueling areas. The fueling facility must be labeled indicating the type fuel being dispensed.
- Grounding cables must be available.
- A fire extinguisher approved for the purpose of extinguishing petroleum product fires available during all fueling operations.
- Serviceable hoses and connections that would preclude a rupture or leaking of fuel.

Inspection Results:

- No fuel service available at this airport.

**Annual Inspection Report
Fort Deposit/Lowndes County Airport
Fort Deposit, Alabama**

January 23, 2018

**9. Prohibited Activities
Administrative Code 450-9-1-.16**

State Licensing Standards:

- Prohibited Activities: The use of any portion of the aircraft operations area, or airport property within the boundaries of the imaginary surfaces of a licensed airport for any purpose other than the operation of aircraft shall be deemed a non-aeronautical activity and is prohibited.

Inspection Results: *VIOLATION*

- There were no prohibited activities observed during the inspection. However, signs that the airport has been used for other than aeronautical activities were observed. Tire tracks in the runway safety area and runway approaches was noted (See above Photo #6 and #7).

Required Action:

- Restrict all unauthorized access.

Annual Inspection Report Fort Deposit/Lowndes County Airport Fort Deposit, Alabama

January 23, 2018

Summary:

The table below summarizes items noted in this report.

INSPECTION SUMMARY

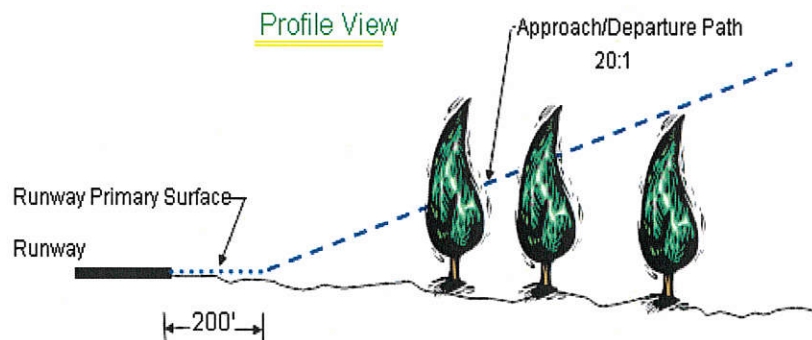
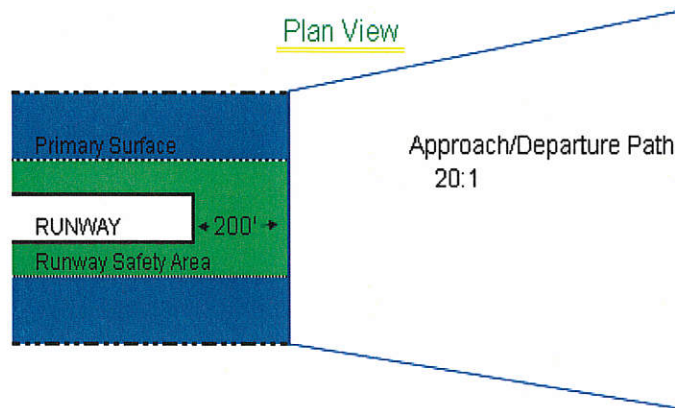
Inspection Area	Violation/Maintenance	Corrective Action
Approach and Departure Paths	VIOLATION	Remove all obstructions to the 20:1 ALDOT Approach/Departure Path.
Primary Surface	VIOLATION	Remove overgrown vegetation
Runway Safety Area	VIOLATION	Prevent unauthorized access within the Runway Safety Area.
Airport Markings	Maintenance	Clean markings or replace in accordance with FAA AC 150/5340-1L.
Wind Direction Indicator	VIOLATION	Remove all obstructions
Airport Lighting	Maintenance	Repair system for night operations
Runway Surfaces	VIOLATION	Eradicate the vegetation, clean and seal the cracks. Remove FOD runway. TAKE IMMEDIATE ACTION TO CORRECT SAFETY VIOLATIONS
Prohibited Activities	VIOLATION	Restrict all unauthorized access.

Please contact the Aeronautics Bureau of the Alabama Department of Transportation at (334) 242-6820 with questions concerning the Annual Inspection Report.

Annual Inspection Report Fort Deposit/Lowndes County Airport Fort Deposit, Alabama

January 23, 2018

Approach and Departure Path Dimensions			
Inner Width	Outer Width	Length	Acreage
250 Feet	450 Feet	1,000 Feet	8.04 Acres
Primary Surface Dimensions			
250 Feet Wide Centered Along Runway Centerline			
Extending 200 Feet Past the Runway End			
Runway Safety Area Dimensions			
120 Feet Wide Centered Along Runway Centerline			
Extending 200 Feet Past the Runway End			



APPENDIX 1

FT DEPOSIT/LOWNDES COUNTY AIRPORT FORT DEPOSIT, ALABAMA JANUARY 23, 2018

NOTES:
1. THIS DRAWING IS NOT TO SCALE.
2. THIS DRAWING IS FOR INFORMATIONAL
PURPOSES ONLY AND SHOULD NOT BE
USED FOR ANY OTHER PURPOSE.

ALDOT 20:10 OBSTRUCTIONS

- | | | |
|--|--|--|
| 5. TREE: 12' ABOVE RWY END
443' FROM RWY END
125' RIGHT OF CENTERLINE
20:10 OBSTRUCTION CLEARANCE | 6. TREE: 49' ABOVE RWY END
1108' FROM RWY END
176' RIGHT OF CENTERLINE
18:1 OBSTRUCTION CLEARANCE | 10. TREE: 43' ABOVE RWY END
815' FROM RWY END
146' LEFT OF CENTERLINE
11:10 OBSTRUCTION CLEARANCE |
| 8. TREE: 43' ABOVE RWY END
1100' FROM RWY END
21' LEFT OF CENTERLINE
20:10 OBSTRUCTION CLEARANCE | 9. TREE: 53' ABOVE RWY END
833' FROM RWY END
176' LEFT OF CENTERLINE
11:10 OBSTRUCTION CLEARANCE | 11. TREE: 25' ABOVE RWY END
450' FROM RWY END
116' LEFT OF CENTERLINE
10:10 OBSTRUCTION CLEARANCE |

PRIMARY SURFACE VIOLATIONS

APPENDIX 2

PAGE 18

FT DEPOSIT/LOWNDES COUNTY AIRPORT
FORT DEPOSIT, ALABAMA
JANUARY 23, 2018

20:1 OBSTRUCTION CLEARANCE

3. TREE: 10' ABOVE RWY END
228' FROM RWY END
6' RIGHT OF CENTERLINE
2:1 OBSTRUCTION CLEARANCE

NOTES:
1. THIS DRAWING IS NOT TO SCALE.
2. THIS DRAWING IS FOR INFORMATIONAL
PURPOSES ONLY AND SHOULD NOT BE
USED FOR ANY OTHER PURPOSE.

PAGE 19

APPENDIX 3