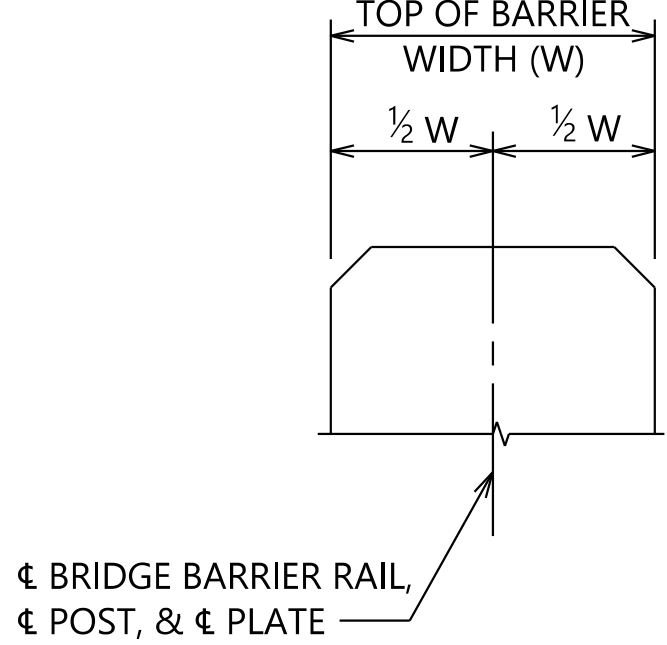
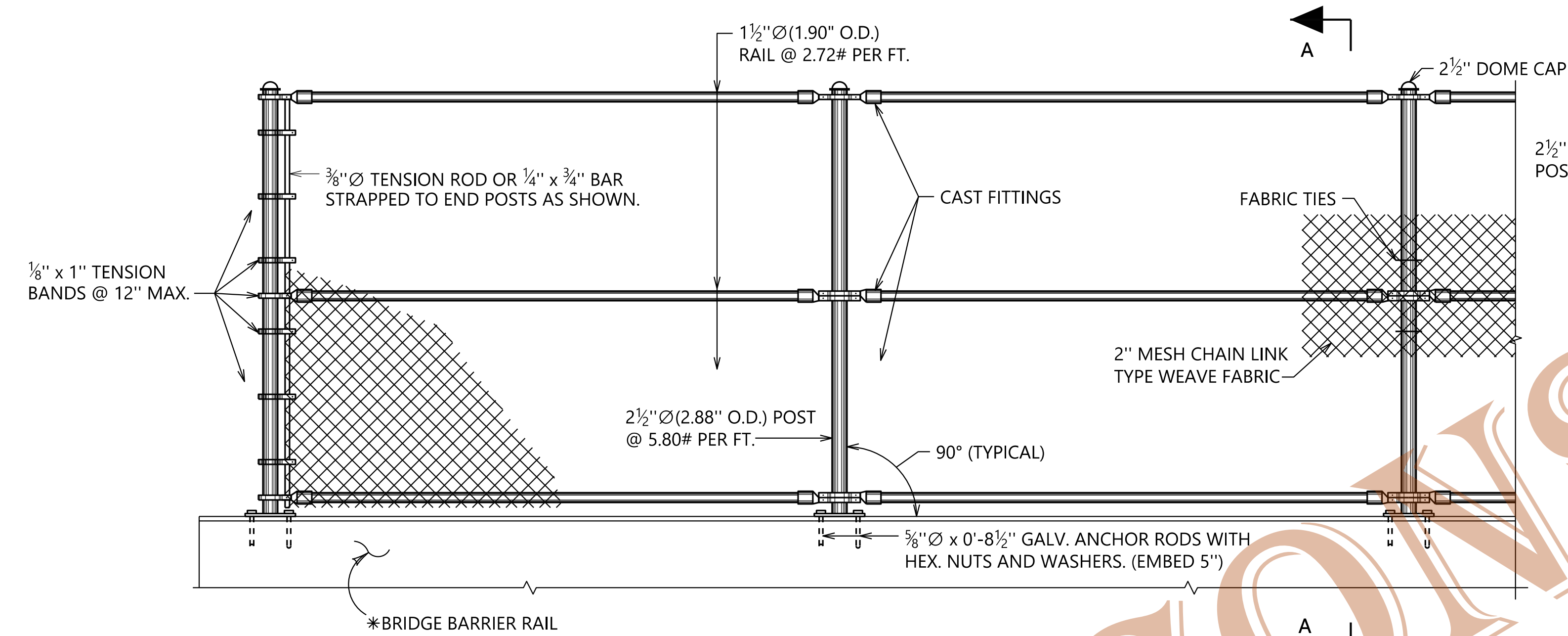


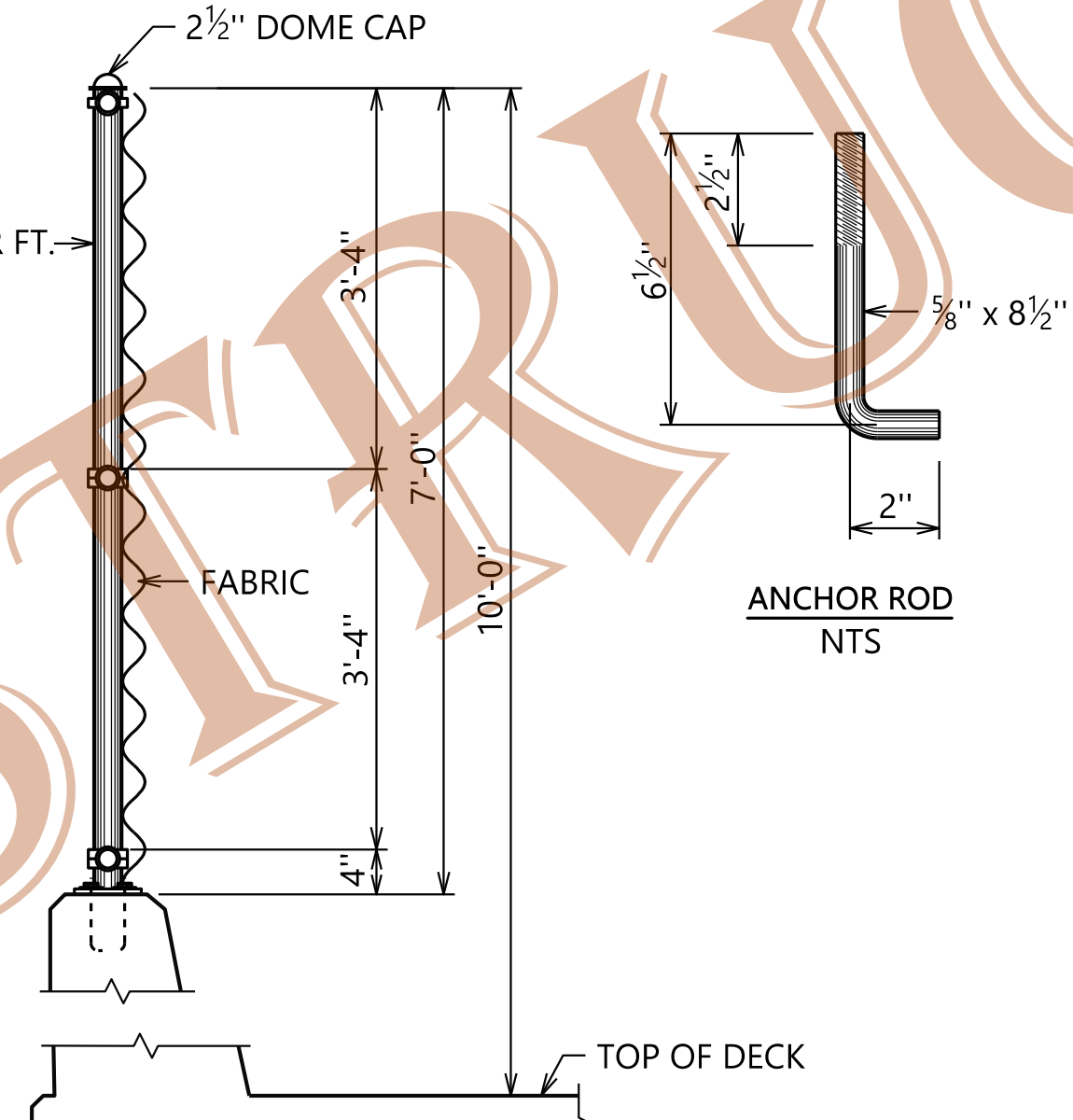
PLAN OF POST PLATES
SCALE: 3/4"=1'-0"



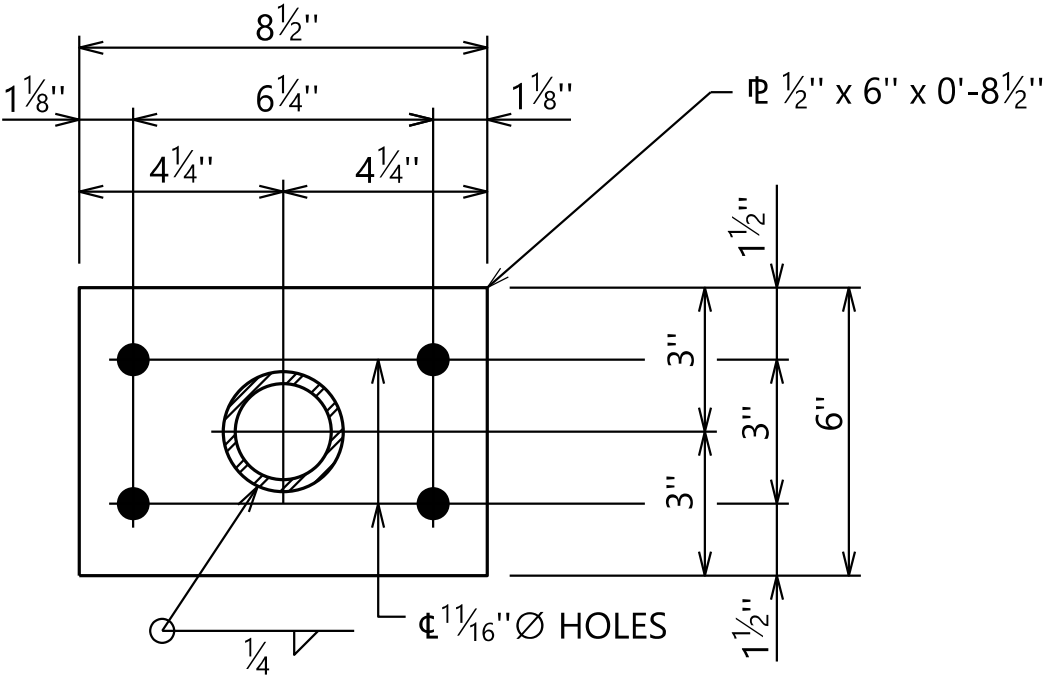
POST & PLATE PLACEMENT
IN BRIDGE BARRIER RAIL
NTS



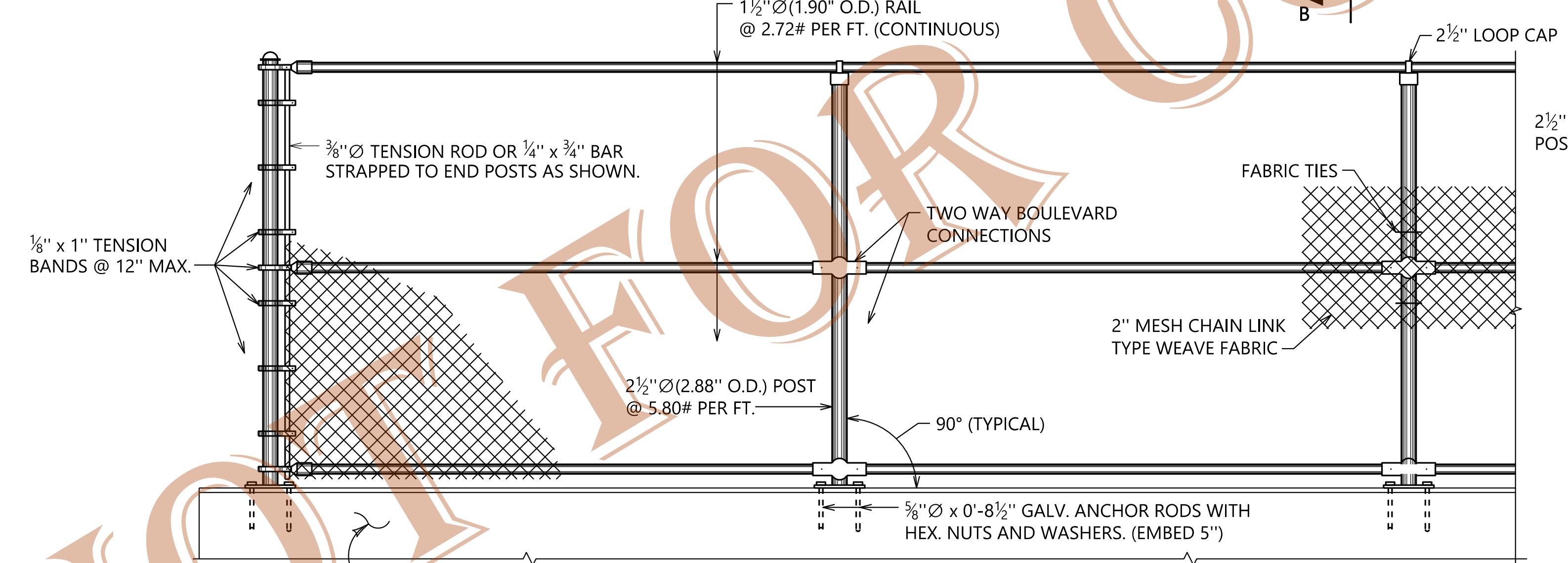
ELEVATION OF FENCE
SCALE: 3/4"=1'-0"



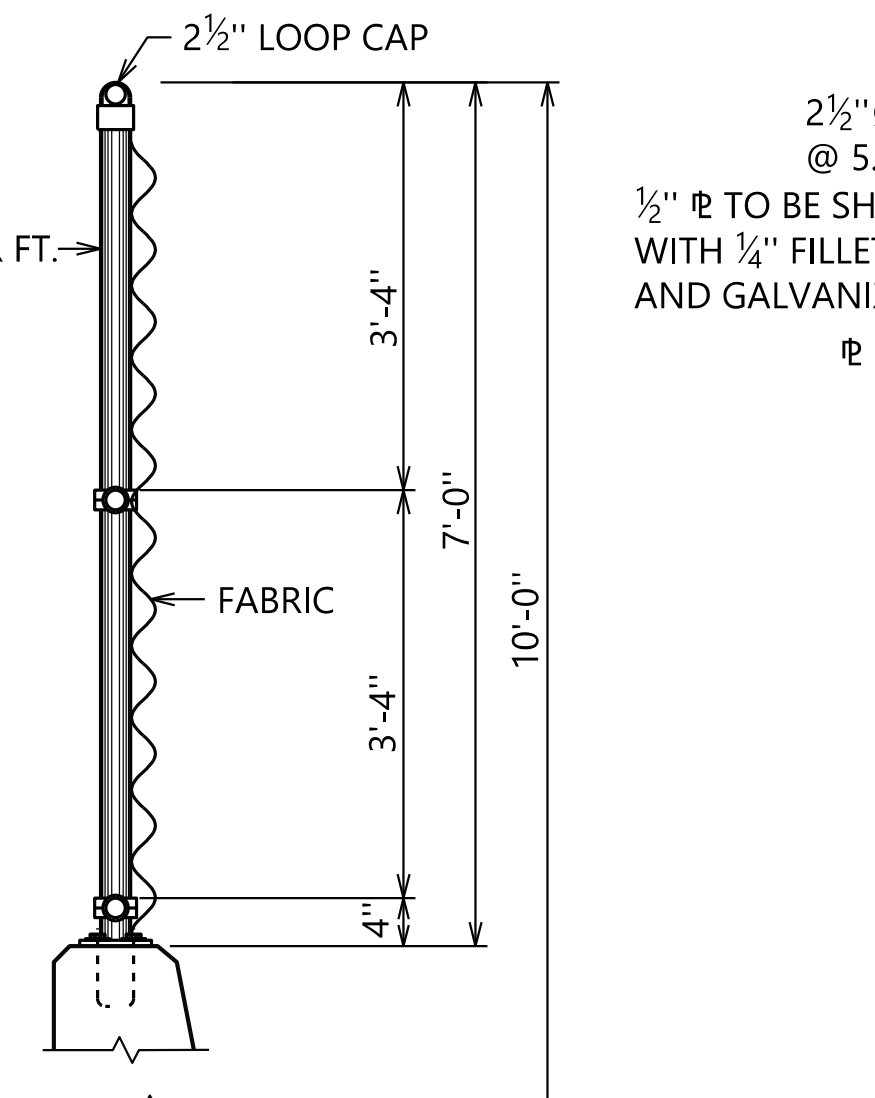
SECTION A-A
SCALE: 3/4"=1'-0"



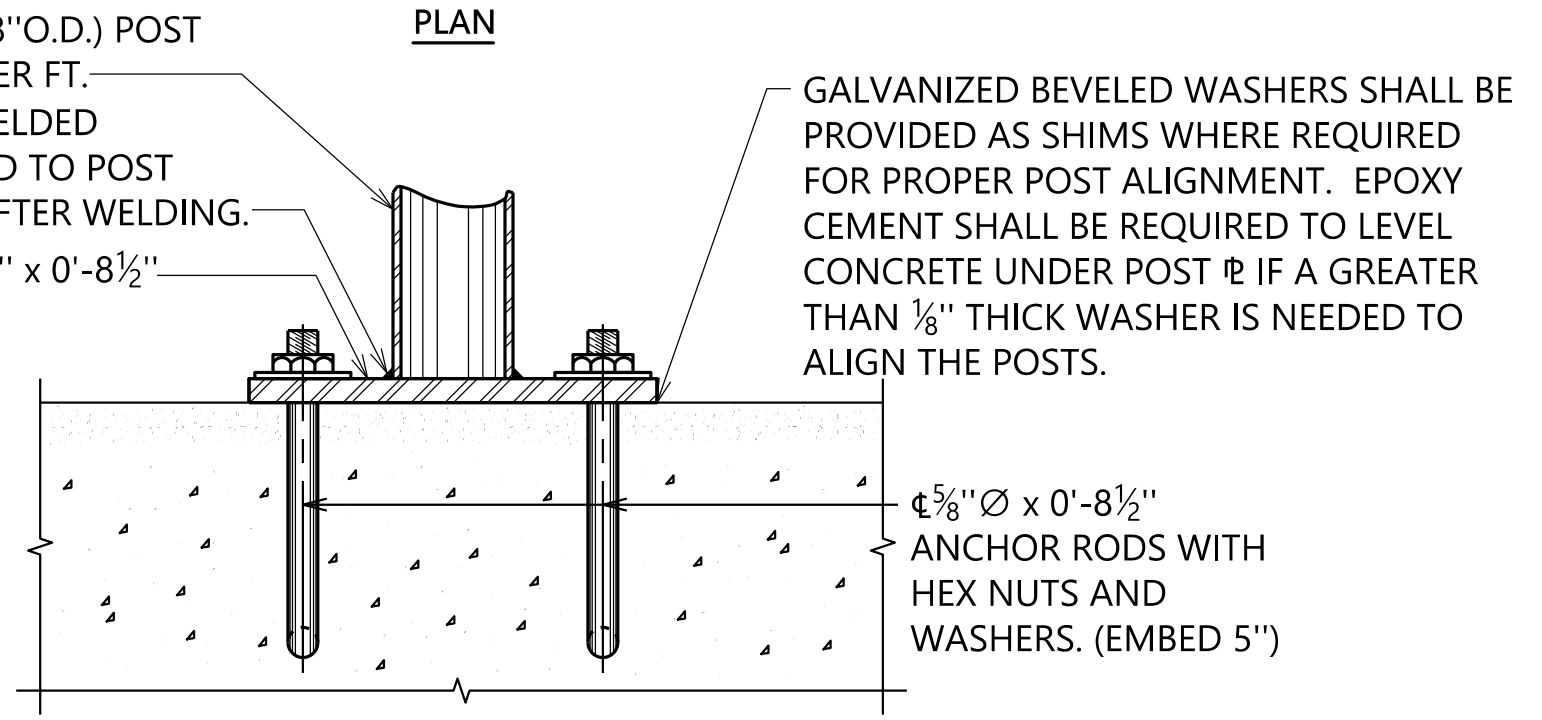
PLAN



ELEVATION OF FENCE (OPTIONAL)
SCALE: 3/4"=1'-0"



SECTION B-B
SCALE: 3/4"=1'-0"



ELEVATION

POST PLATE
SCALE: 3"=1'-0"

- NOTES**
1. ALL POST AND FRAMES TO BE SET AS SHOWN IN ELEVATION VIEWS ON THIS SHEET.
 2. FABRIC SHALL BE FASTENED TO LINE POSTS WITH PROPER TIES SPACED APPROX. 12" APART. FABRIC SHALL BE ATTACHED TO RAILS WITH PROPER TIES SPACED APPROX. 15" APART.
 3. ALL ROUGH EDGES OF FABRIC OR TIE TWIST ENDS SHALL BE BENT BACK AWAY FROM PEDESTRIAN SIDE OF WALKWAYS.
 4. ALL MATERIALS FOR FENCE SHALL BE IN ACCORDANCE WITH THE ALABAMA DEPARTMENT OF TRANSPORTATION STANDARD SPECIFICATIONS SECTION 871. ALL MISCELLANEOUS STEEL, SEE SUB-ARTICLE 634.02(b).
 5. TEMPLATES, SUPPLIED BY THE MATERIALS MANUFACTURER, SHALL BE USED TO PLACE ALL 3/8" Ø ANCHOR RODS FOR POST PLATES.
 6. PAYMENT FOR FENCE SHALL BE PAY ITEM 634E. THIS ITEM SHALL CONSIST OF FURNISHING AND PLACING THE FENCE, WHICH INCLUDES THE WIRE FABRIC, ALL THE PIPE, FRAMEWORK, ALL THE FASTENERS, PLATES, STRAPS AND CONNECTORS NECESSARY FOR THIS INSTALLATION, COMPLETE AND IN PLACE.
 7. THE CONTRACTOR MAY SUBSTITUTE 3/8" Ø x 8" ALL THREADED, GALVANIZED A-36 ANCHOR RODS IN 1 1/16" x 6" DRILLED HOLES IN LIEU OF THE ANCHORAGE DETAILS SHOWN ON THIS SHEET. THIS ALTERNATE ANCHORAGE SYSTEM MUST BE EPOXIED IN WITH ONE OF THE APPROVED CONCRETE ANCHORING SYSTEMS IN THE ALDOT "MATERIALS, SOURCES AND DEVICES WITH SPECIAL ACCEPTANCE REQUIREMENTS" MANUAL, SECTION II-15. PULL OUT TEST MAY BE REQUIRED AT THE DISCRETION OF THE ENGINEER.