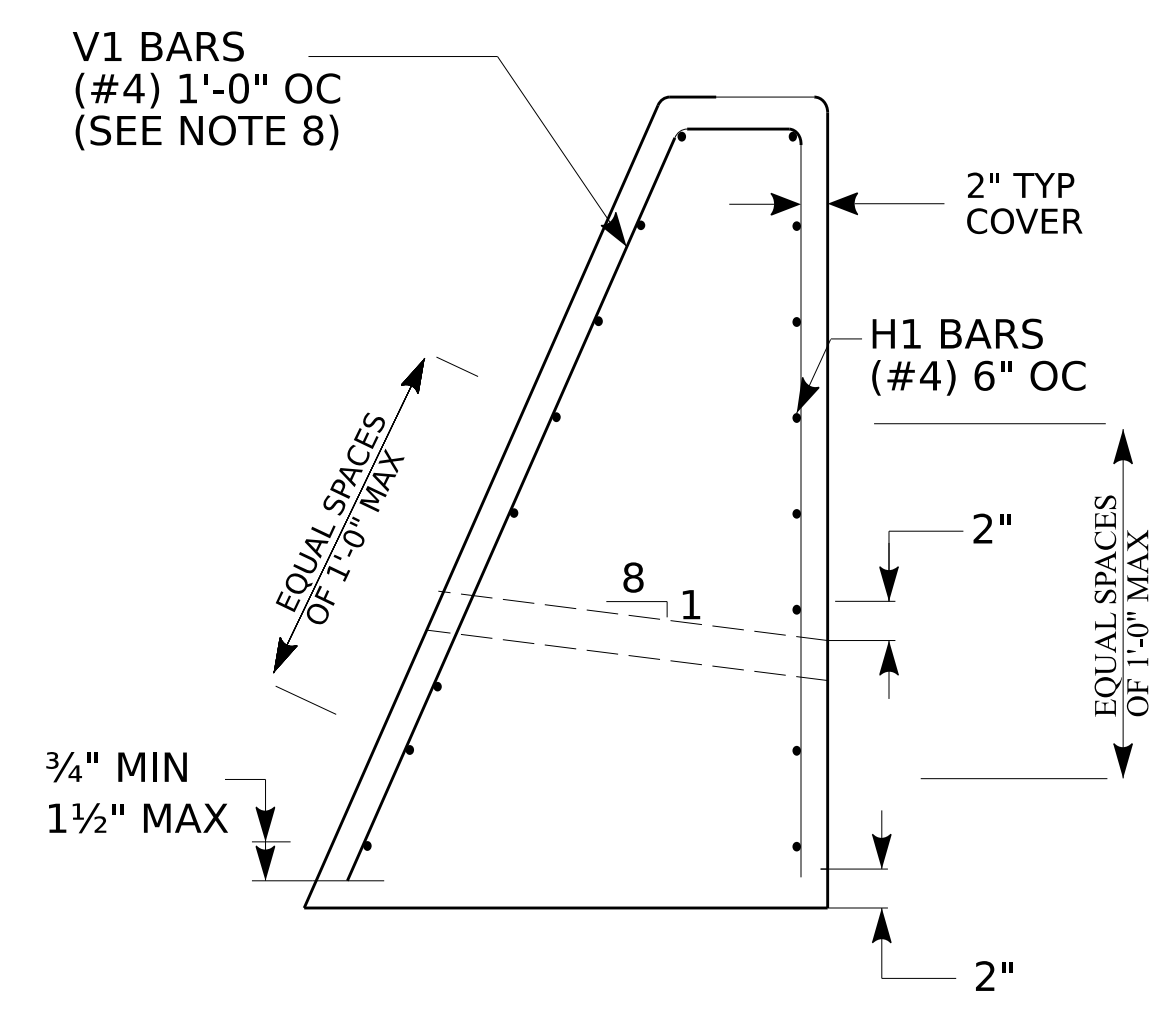
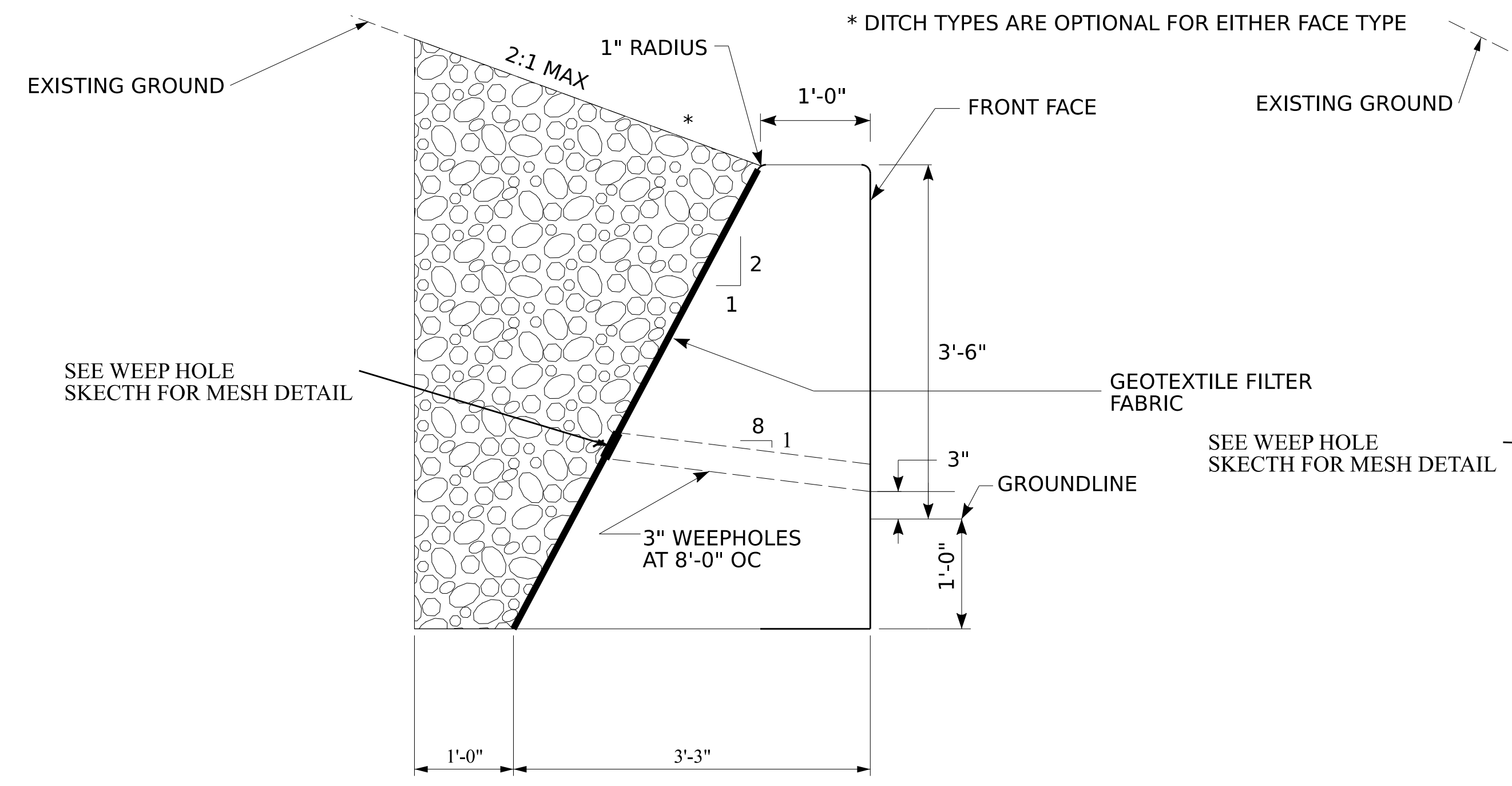


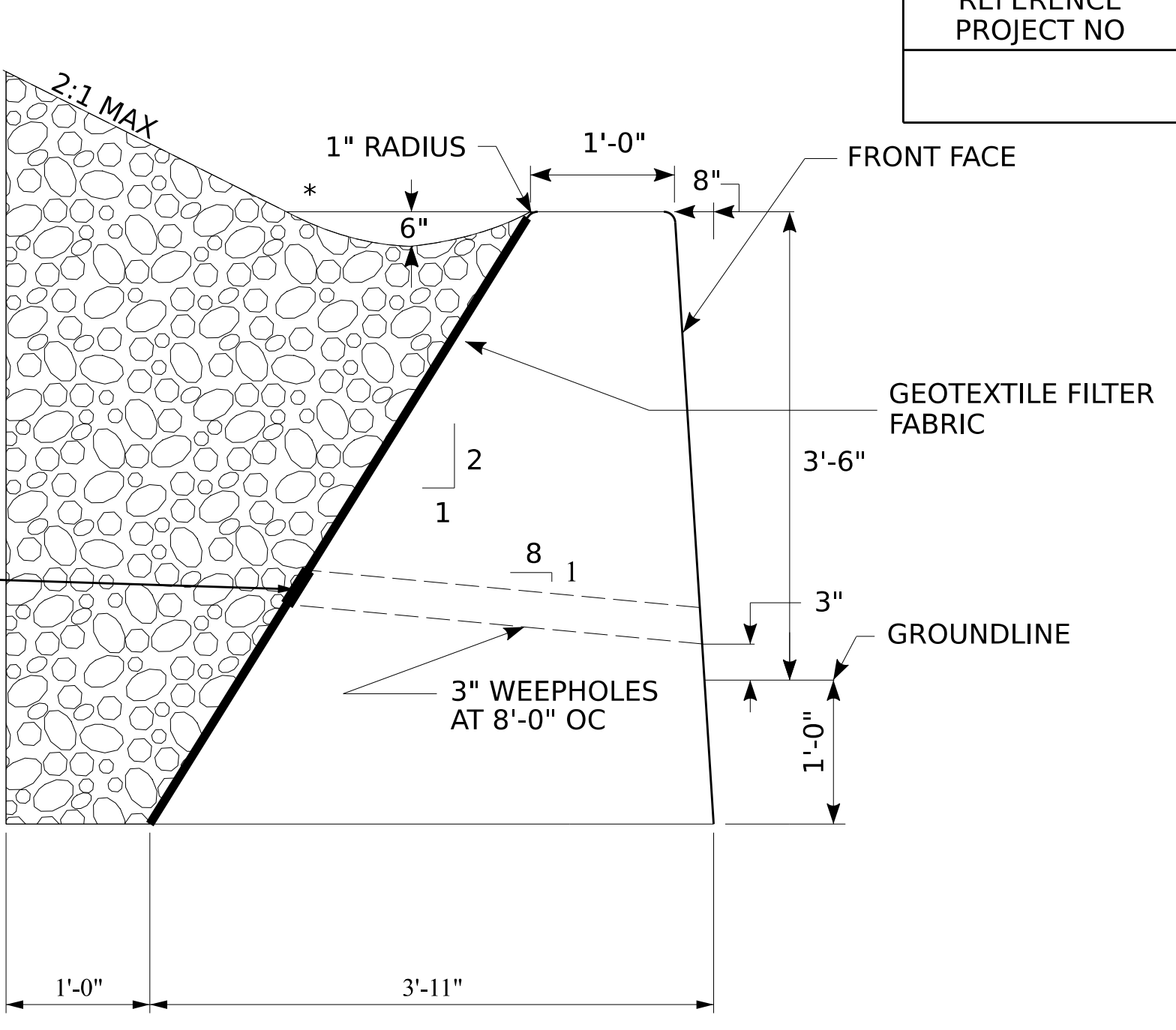
REFERENCE PROJECT NO	FISCAL YEAR	SHEET NO



SECTION A-A

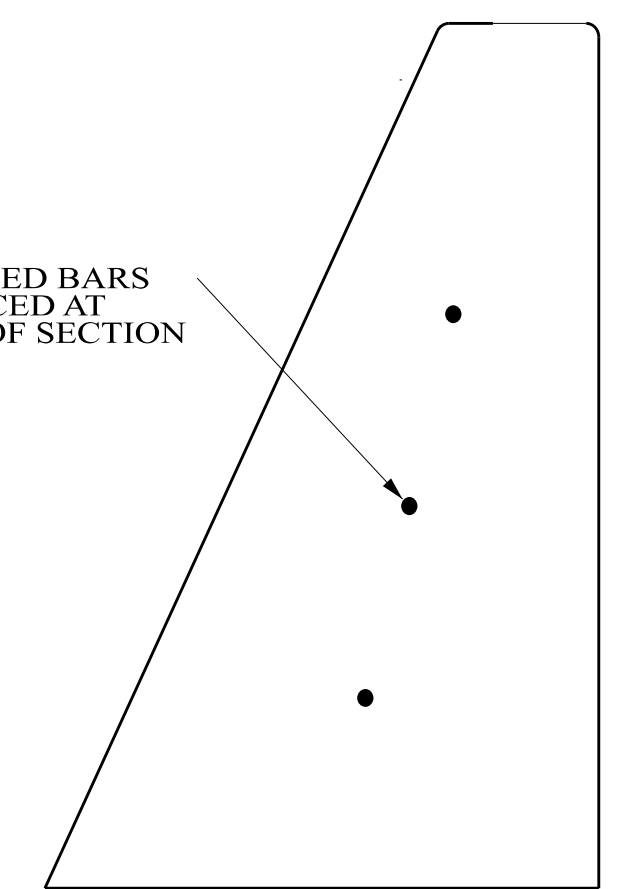


VERTICAL SLOPE BARRIER FACE

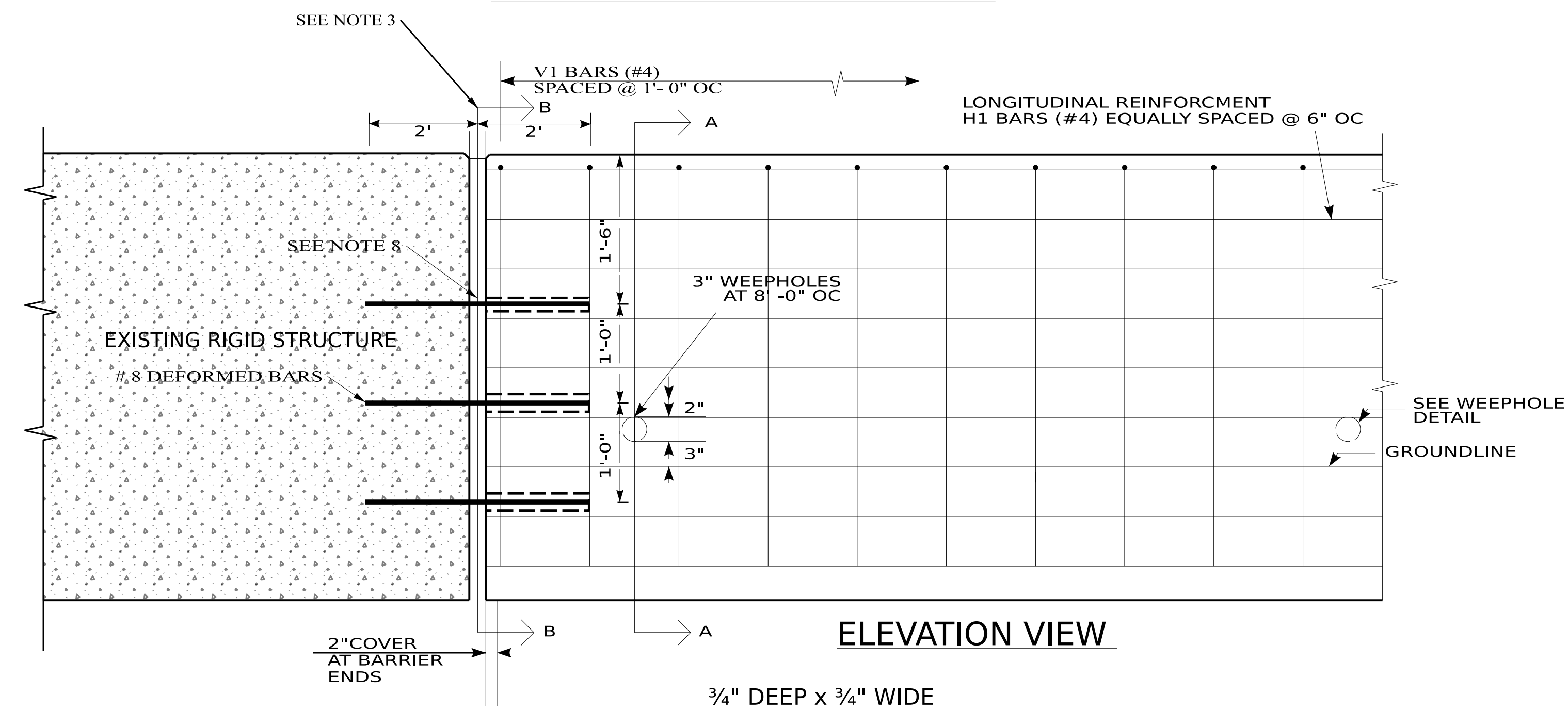


SINGLE SLOPE BARRIER FACE

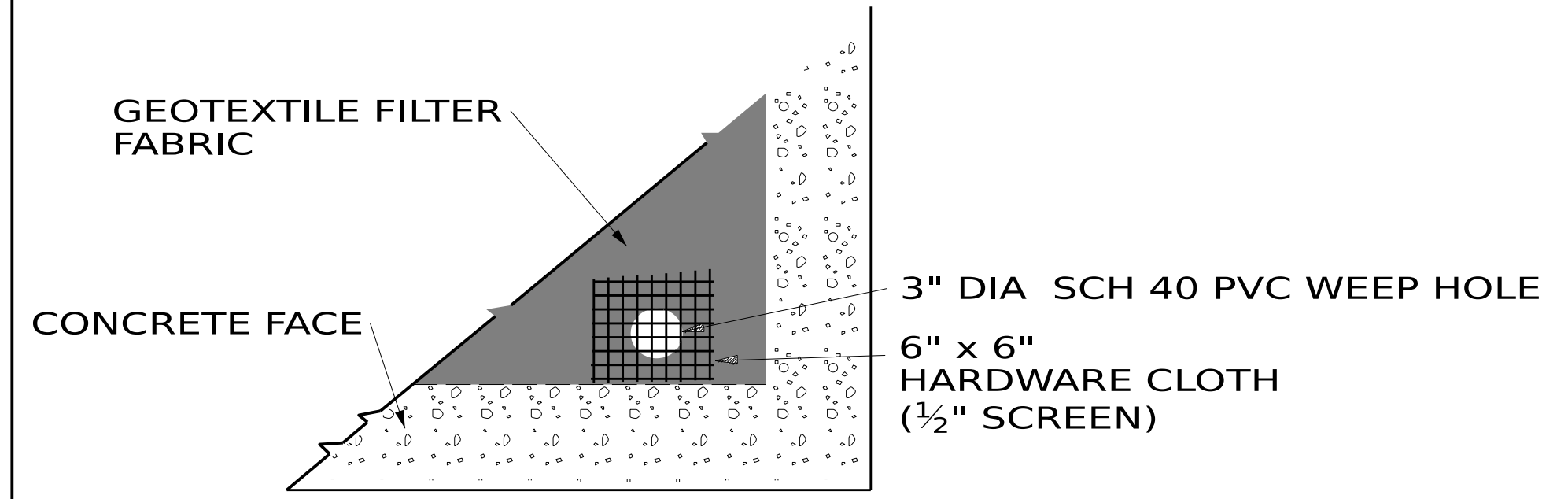
8 DEFORMED BARS TO BE PLACED AT MIDPOINT OF SECTION



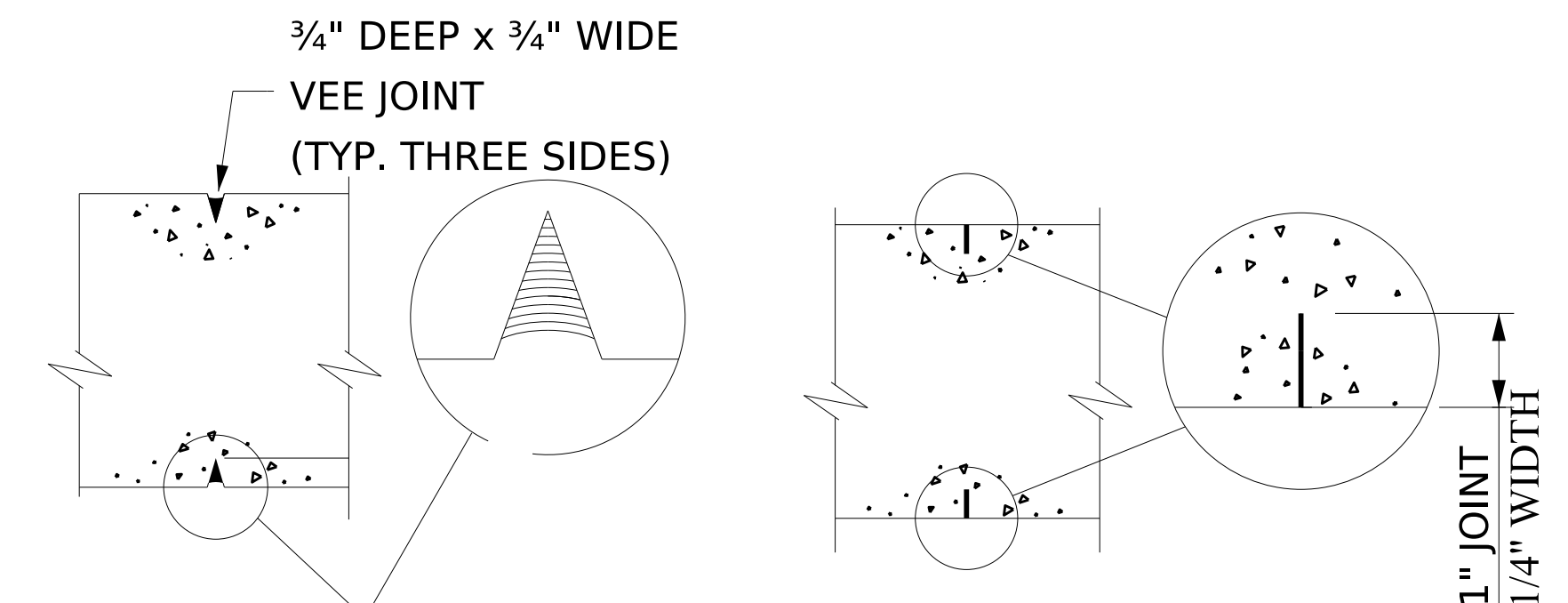
SECTION B-B



ELEVATION VIEW



WEEP HOLE DETAIL



TOOLED JOINT OR SAW CUT JOINT

CONTRACTION JOINT DETAIL

FOR SLIPFORM CONSTRUCTION: IMMEDIATELY AFTER CONCRETE IS PLACED, FORM THE CONTRACTION JOINT TO THE REQUIRED DEPTH USING AN APPROVED METHOD.

GENERAL NOTES:

- CONTRACTION JOINTS SHALL BE LOCATED AT A MAXIMUM SPACING OF 20'-0". IF A TOOLED JOINT IS USED IT SHALL BE FILLED WITH SILICONE.
- H1 BARS (#4) SHALL BE CONTINUOUS EXCEPT AT EXPANSION JOINTS. SPLICE BARS 30 DIAMETER MINIMUM.
- PROVIDE A 3/4" EXPANSION JOINT ONLY WHERE THE BARRIER ABUTS RIGID OBJECTS OR STRUCTURES. EXPANSION JOINT FILLER AND JOINT SEALANT SHALL CONFORM TO THE REQUIREMENTS OF SECTION 832. DO NOT DRILL INTO EXISTING BRIDGE STRUCTURES.
- SEE ALDOT LIST II-3.6 FOR APPLIED GEOTEXTILES IN SEPARATION APPLICATIONS.
- IF SITE CONDITIONS DICTATE THE NEED FOR A NARROW GEOSYNTHETIC DRAIN, THE MATERIAL SHALL CONFORM TO THE ALDOT LIST 11-18 PREFABRICATED DRAINAGE MATERIAL FOR EDGE DRAIN.
- WWF 6 X 6 - D20 X D20 WELDED WIRE FABRIC MAY BE USED IN LIEU OF THE V1 BARS (#4) AND H1 BARS (#4).
- CONSTRUCTION JOINTS MAY BE USED WHEN REQUIRED BY THE CONTRACTOR'S OPERATIONS (END OF DAY POUR OR INTERRUPTION OF PLACEMENT). JOINT LOCATIONS SHALL BE SUBJECT TO ENGINEER APPROVAL. PROVIDE REINFORCING CONTINUITY PER NOTE 2.
- 1.5" PVC PIPE SLEEVE SHALL BE PROVIDED AND PERMANENTLY CAPPED AT BOTH ENDS WITH PVC CAPS.
- THE INTENDED USE OF THIS PRODUCT IS FOR USE ONLY OUTSIDE THE CLEAR ZONE AND IS NOT INTENDED TO FUNCTION AS A ROADSIDE SAFETY BARRIER.
- IF A PRECAST OPTION IS USED, THE PRECAST WALL SHALL BE POSITIVELY CONNECTED WHERE IT TIES INTO ANY EXISTING RIGID STRUCTURE.

NOT TO SCALE

--SPECIFICATIONS--
CURRENT ALABAMA DEPARTMENT OF TRANSPORTATION