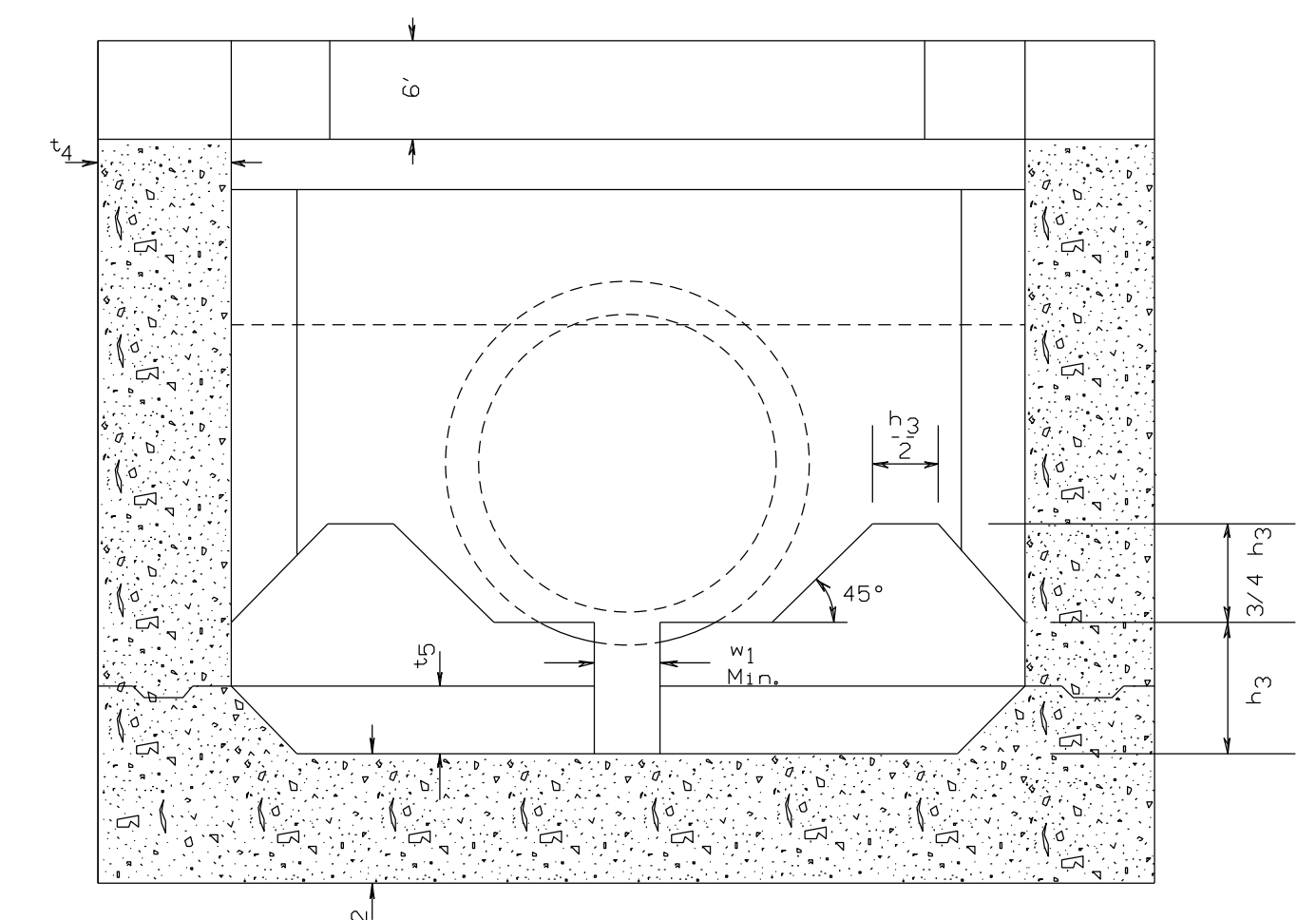


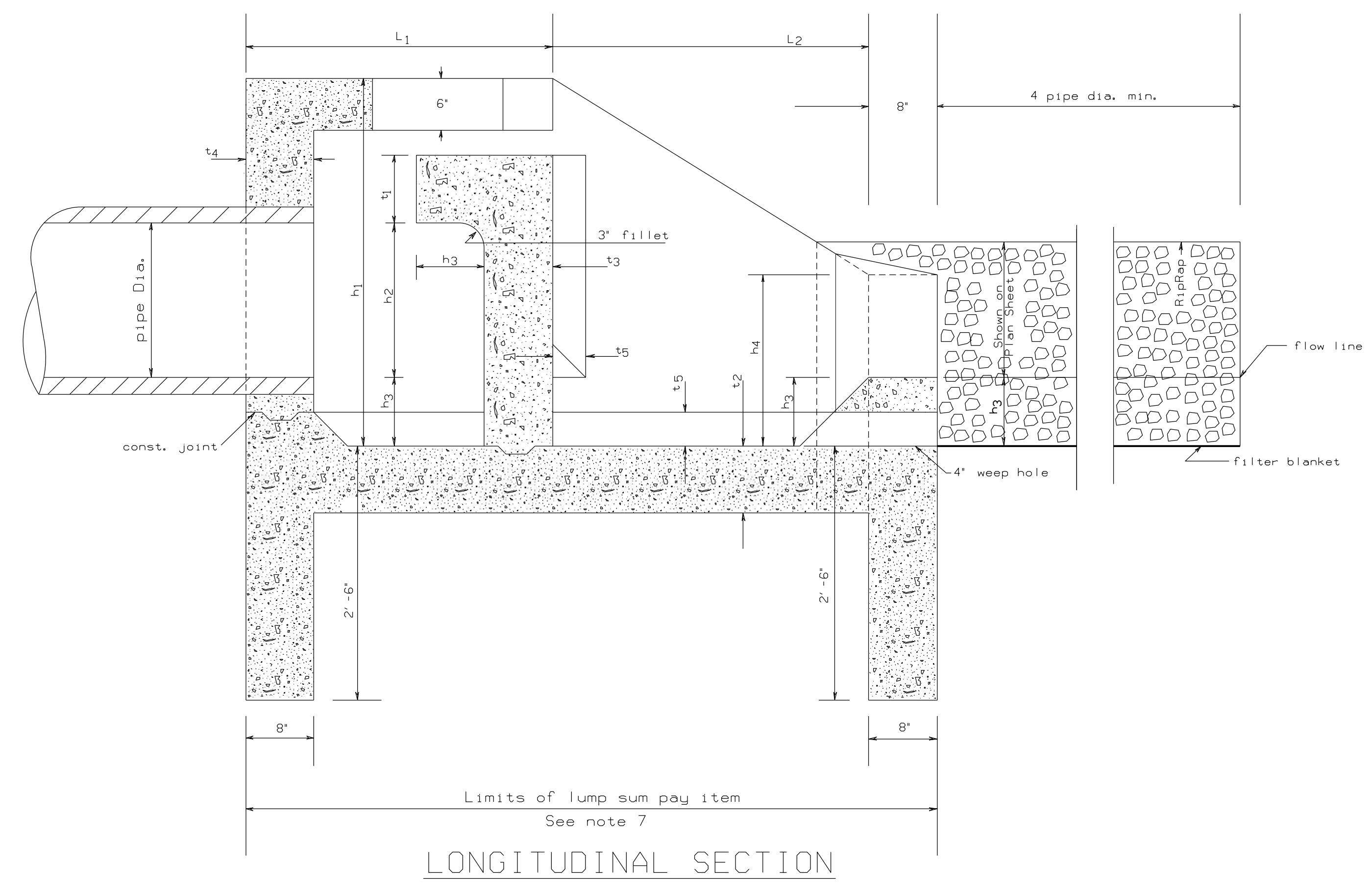
PLAN



SECTION A - A

NOTES:

1. Tailwater Depth should not exceed  $(h_3 + \frac{h_2}{2})$ .
2. The Basin should be constructed horizontal for all entrance pipe slopes greater than 15° (26% grade). For these steeper slopes, a horizontal section of at least four pipe widths long should be provided immediately upstream of the dissipator. In every case, the pipe invert height ( $h_3$ ) should be maintained.
3. When a hydraulic jump is expected to form in the downstream end of pipe and the entrance is submerged, a vent about one-sixth the pipe diameter should be installed at a convenient location upstream from the jump.
4. Riprap should be placed downstream of the basin for a length of at least four pipe widths. For soil types sensitive to erosion riprap lengths should be increased accordingly. Riprap should be paid for under item 610.
5. The concrete quantities will be reduced by the amount of concrete the pipe displaces. Reinforcing steel will be cut to fit pipe entrance.
6. Reinforcing steel will be #4 bars @ 12' o.c. except as noted.
7. The basins will be paid for per each standard basin complete in place as shown on drawings.
8. The quantities shown are for estimating purposes only.



LONGITUDINAL SECTION

| TYPE | DIMENSIONS IN FEET AND INCHES |       |       |       |     |       |       |       |       |       |       |       |     | ESTIMATED QUANTITIES |       |                |                   |
|------|-------------------------------|-------|-------|-------|-----|-------|-------|-------|-------|-------|-------|-------|-----|----------------------|-------|----------------|-------------------|
|      | $h_1$                         | $h_2$ | $h_3$ | $h_4$ | L   | $L_1$ | $L_2$ | $t_1$ | $t_2$ | $t_3$ | $t_4$ | $t_5$ | W   | $W_1$                | $W_2$ | CU. YDS. CONC. | LBS. STEEL REINF. |
| 00   | 3-8                           | 1-6   | 0-8   | 1-8   | 5-5 | 2-4   | 3-1   | 0-8   | 0-8   | 0-8   | 0-8   | 0-4   | 4-0 | 0-4                  | 1-3   | 3.4            | 620               |

--SPECIFICATIONS--  
CURRENT ALABAMA DEPARTMENT OF TRANSPORTATION

THIS DRAWING REPRESENTS DESIGNS PREPARED FOR USE BY THE ALABAMA DEPARTMENT OF TRANSPORTATION AND IS NOT TO BE COPIED, REPRODUCED, ALTERED, OR USED BY ANYONE, OR ANY ORGANIZATION, WITHOUT THE EXPRESSED WRITTEN CONSENT OF THE ALABAMA DEPARTMENT OF TRANSPORTATION REPRESENTATIVE AUTHORIZED TO APPROVE THIS USE. ANYONE MAKING UNAUTHORIZED USE OF THIS DRAWING MAY BE PROSECUTED TO THE FULLEST EXTENT OF THE LAW.

REVISIONS

**ALABAMA DEPARTMENT OF TRANSPORTATION**  
1409 COLISEUM BOULEVARD  
MONTGOMERY, AL 36130-3050

DESIGN BUREAU SPECIAL DRAWING  
**STILLING BASIN**  
(BAFFLE WALL ENERGY DISSIPATOR)  
TYPE '00'

Bureau Std Engr: J.V.S.  
DRAWN BY: R.T. DATE DRAWN: 06/95

SPECIAL DRAWING NO. SPECIAL PROJECT DETAIL (SHEET 1 OF 3) INDEX NO.

NOT TO SCALE