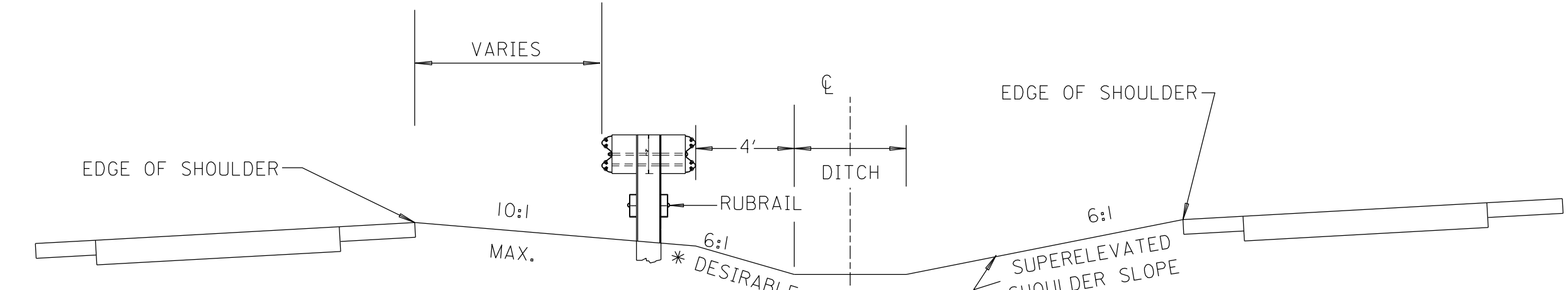


SECTION "A-A"
(TANGENT SECTION)



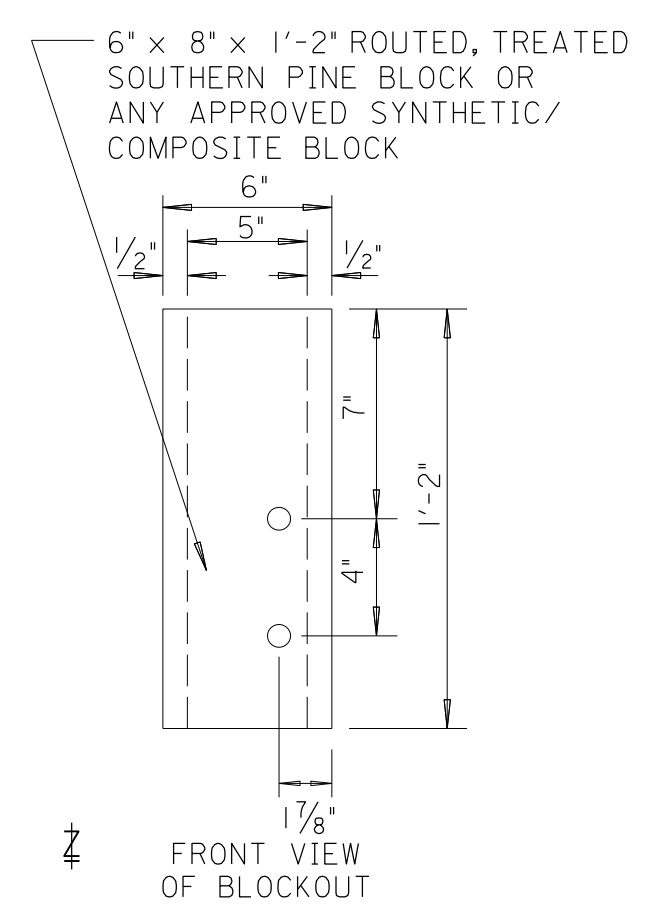
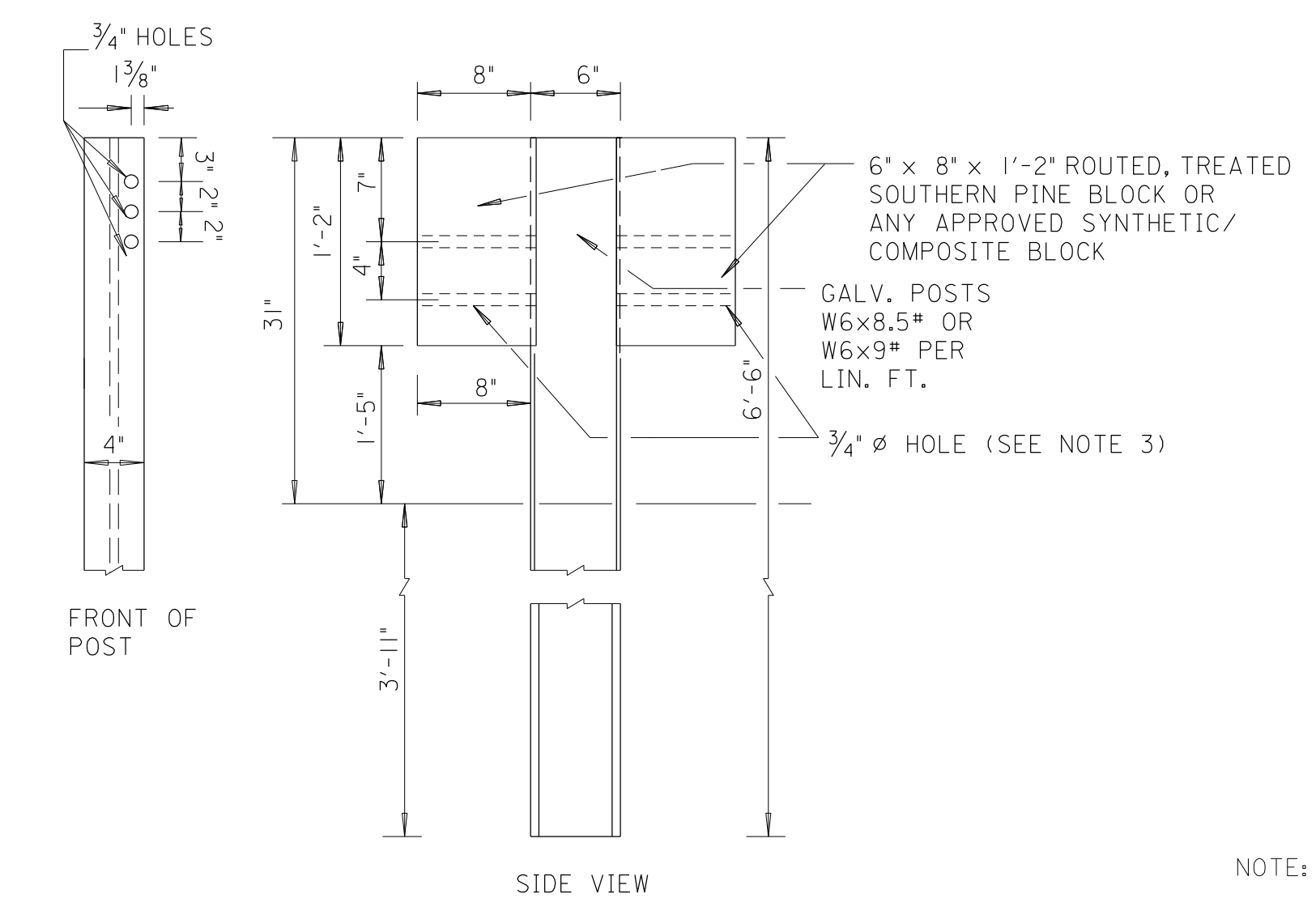
SECTION "A-A"
(SUPERELEVATED SECTION)

* NOTE: Adjust ditch location if necessary to obtain as flat as practical.

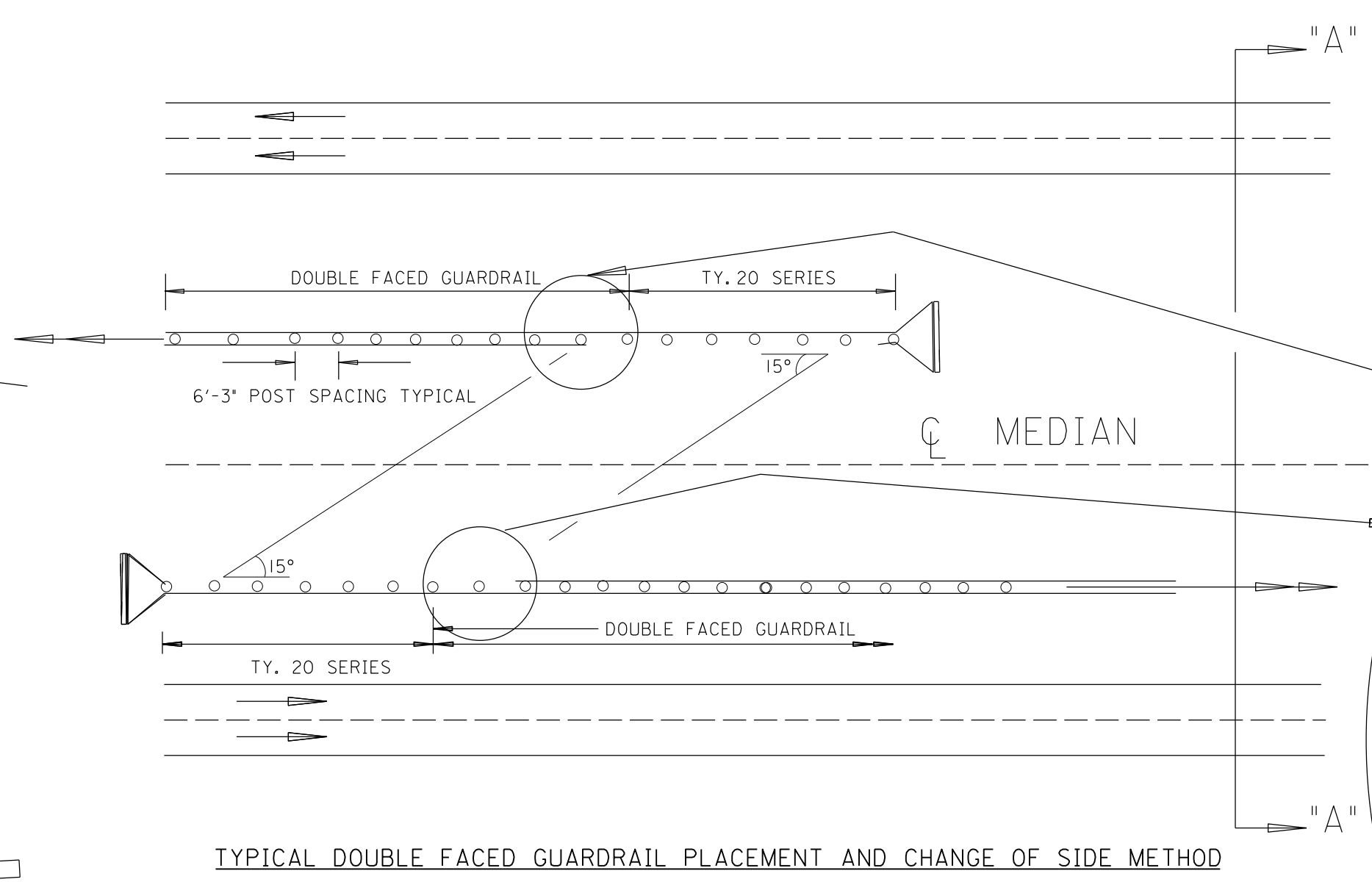
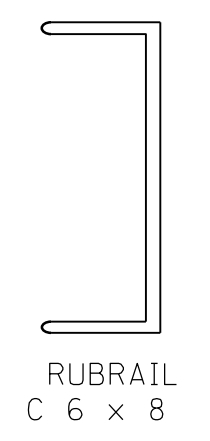
NOTES:

1. DOUBLE FACED GUARDRAIL IS INTENDED TO PREVENT CROSS THE MEDIAN CRASHES. SEE SECTION A-A FOR TYPICAL PLACEMENT.
2. IN HORIZONTAL CURVES THE RAIL SHOULD BE PLACED ON THE HIGH SIDE OF THE CURVE (SEE SUPERELEVATION SECTION).
3. SEE STANDARD DRAWING NO. GR-630-S, SHEET 1 OF 2, FOR FURTHER HARDWARE DETAILS.

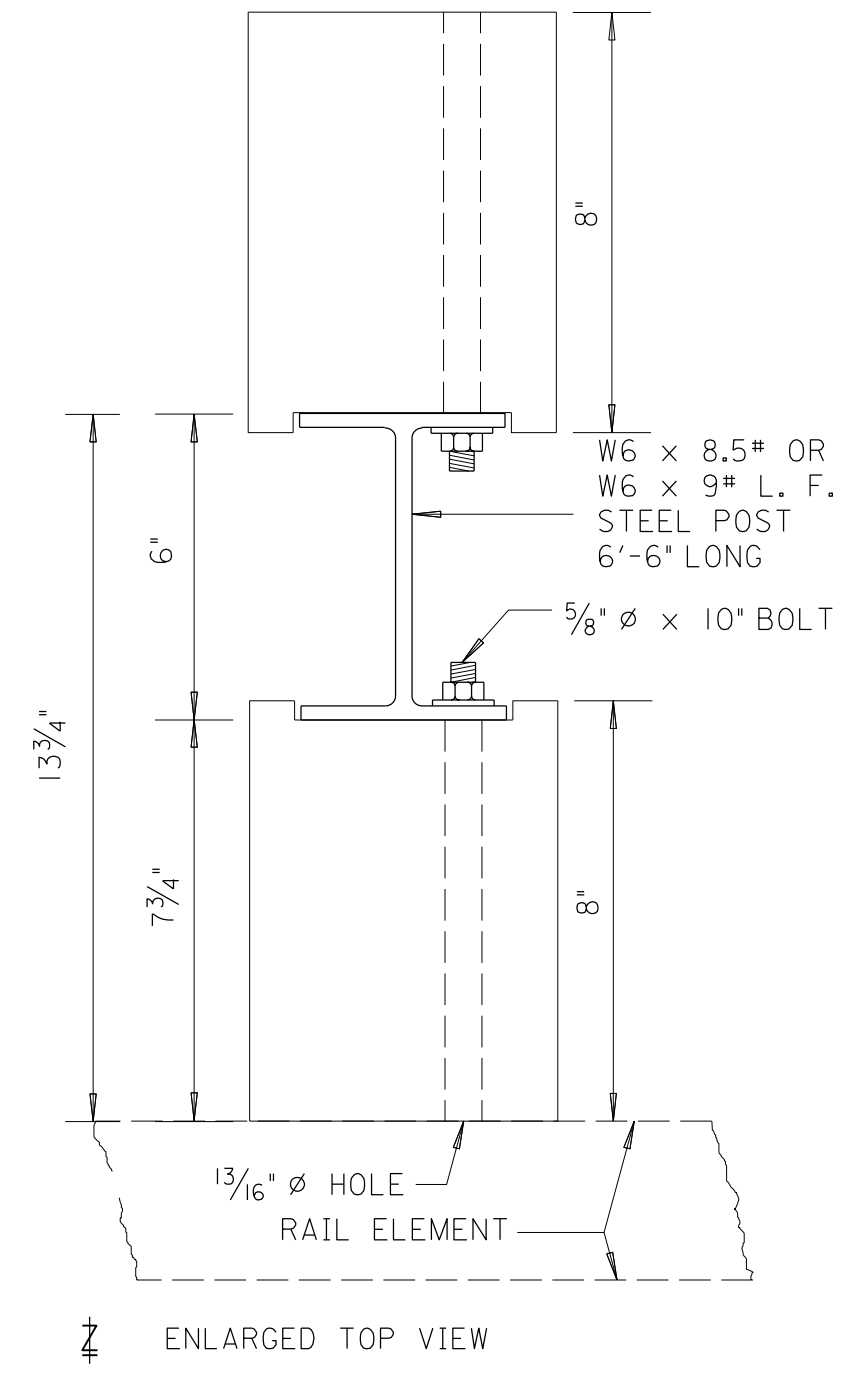
NOTE: THE BLOCKOUTS SHOWN ON STEEL POST ARE DRILLED ON THE RIGHT SIDE OF THE CENTER OF THE POST. THE SUPPLIER MAY PROVIDE EITHER LEFT OR RIGHT SIDE DRILLED HOLES, OR ON BOTH SIDES.



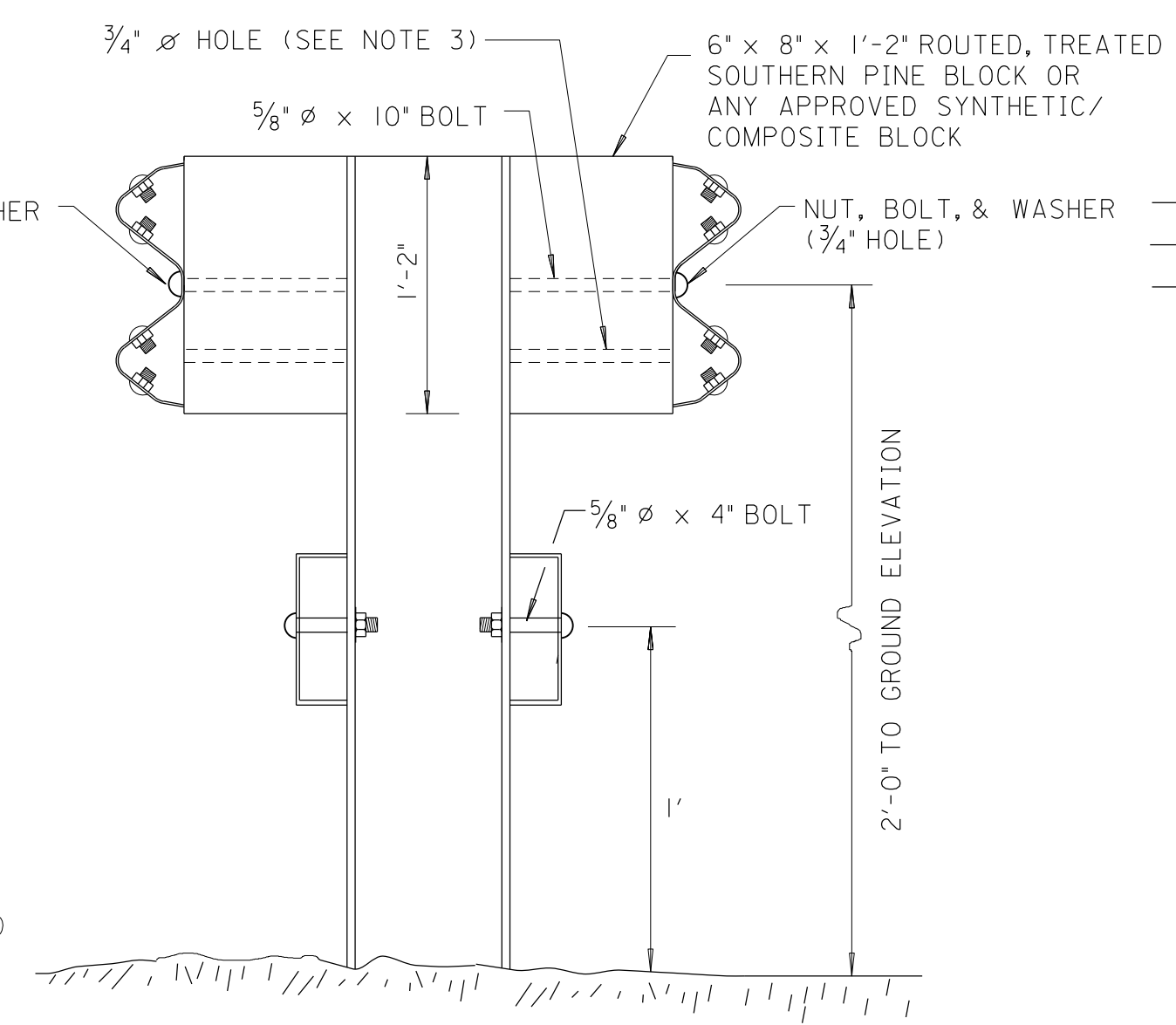
NOTE: BACK-UP PLATES AT NON-SPLICE LOCATIONS ARE NOT REQUIRED WITH TREATED SOUTHERN PINE OR ANY APPROVED SYNTHETIC/COMPOSITE BLOCKOUTS



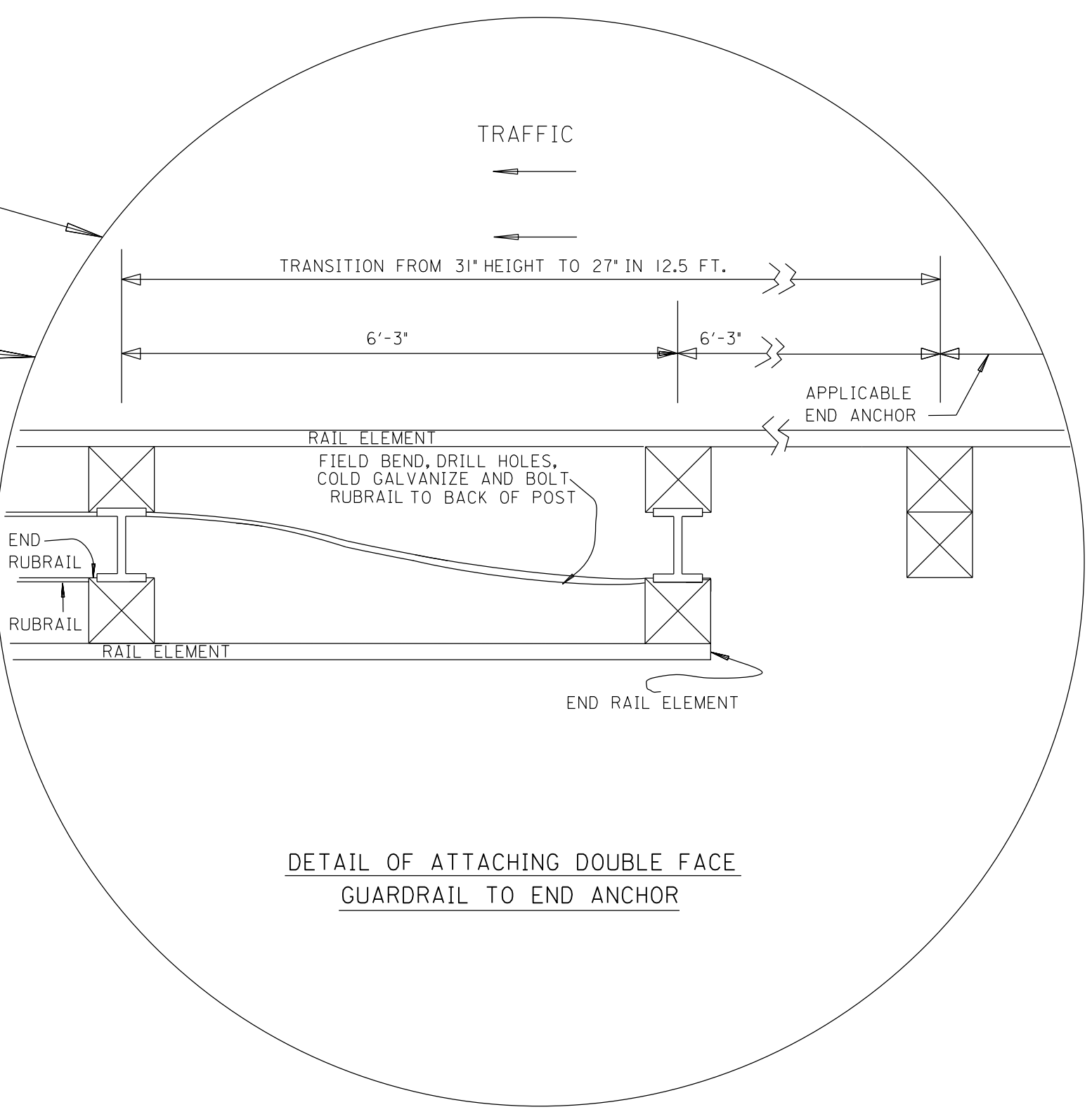
TYPICAL DOUBLE FACED GUARDRAIL PLACEMENT AND CHANGE OF SIDE METHOD



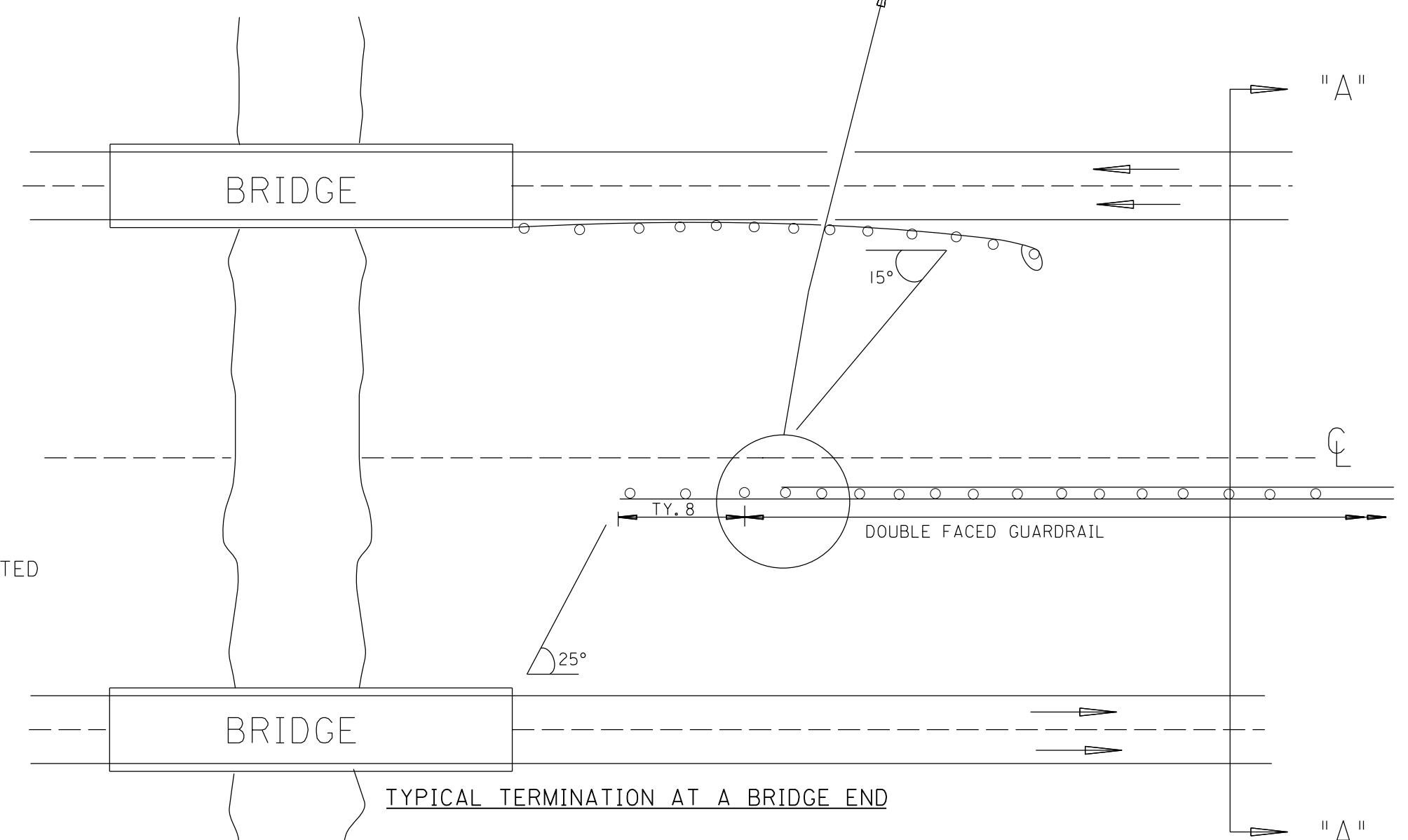
ENLARGED TOP VIEW



GUARDRAIL ARRANGEMENT AT STEEL POSTS



DETAIL OF ATTACHING DOUBLE FACE GUARDRAIL TO END ANCHOR



TYPICAL TERMINATION AT A BRIDGE END

--SPECIFICATIONS--
CURRENT ALABAMA DEPARTMENT OF TRANSPORTATION

THIS DRAWING REPRESENTS DESIGNS PREPARED FOR USE BY THE ALABAMA DEPARTMENT OF TRANSPORTATION AND IS NOT TO BE COPIED, REPRODUCED, ALTERED, OR USED BY ANYONE, OR ANY ORGANIZATION, WITHOUT THE EXPRESSED WRITTEN CONSENT OF THE ALABAMA DEPARTMENT OF TRANSPORTATION REPRESENTATIVE AUTHORIZED TO APPROVE THIS USE. ANYONE MAKING UNAUTHORIZED USE OF THIS DRAWING MAY BE PROSECUTED TO THE FULLEST EXTENT OF THE LAW.

REVISIONS

ALABAMA DEPARTMENT OF TRANSPORTATION
1409 COLISEUM BOULEVARD
MONTGOMERY, AL 36130-3050

DESIGN BUREAU SPECIAL DRAWING
DOUBLE FACED GALVANIZED STEEL BEAM GUARDRAIL WITH BLOCKED OUT GALVANIZED STEEL POSTS

Bureau Std Engr : L.V.S.
DRAWN BY: J.F.T. DATE DRAWN: 09-04-00

SPECIAL DRAWING NO
SPECIAL PROJECT DETAIL

INDEX NO

NOT TO SCALE