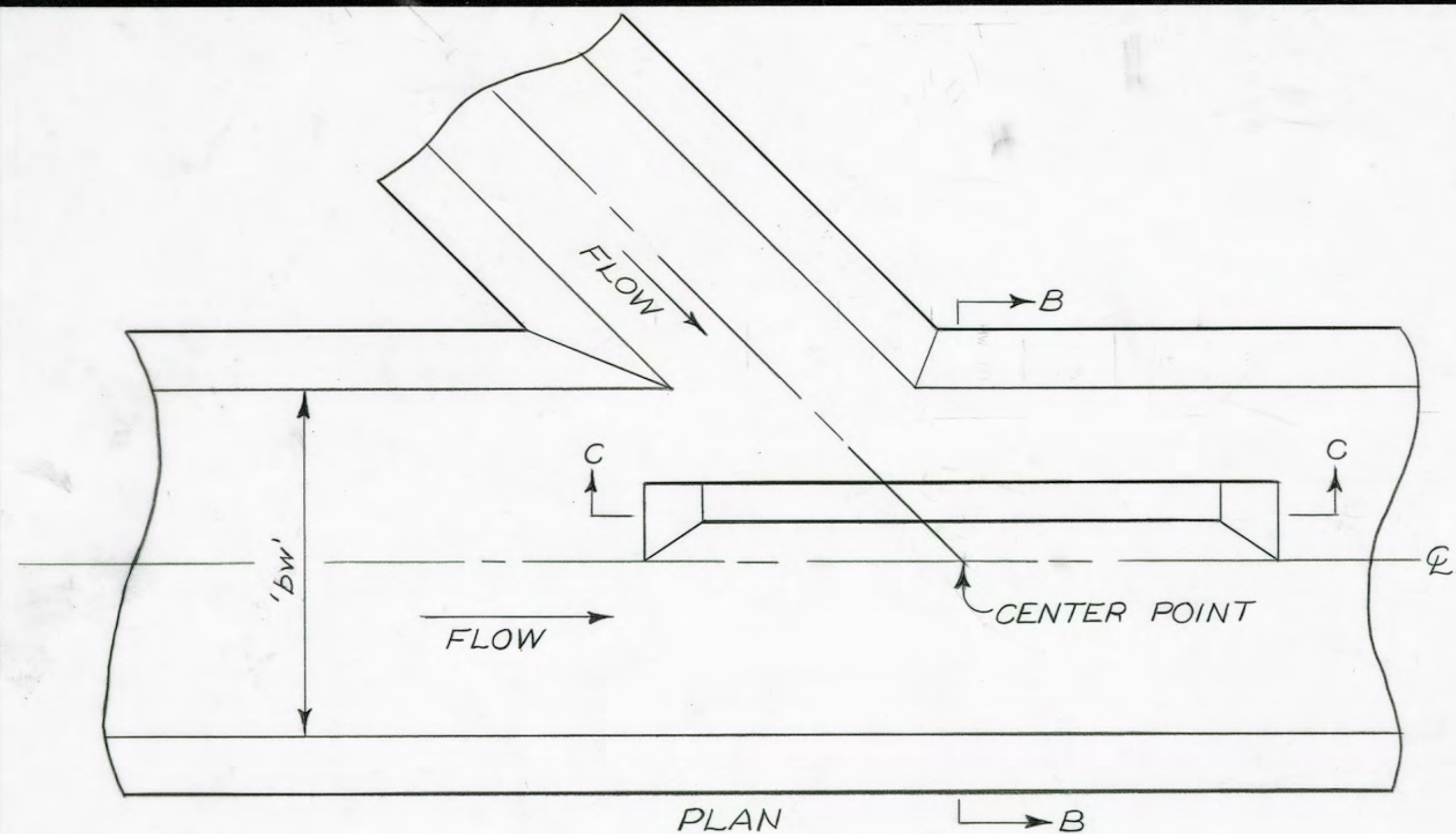
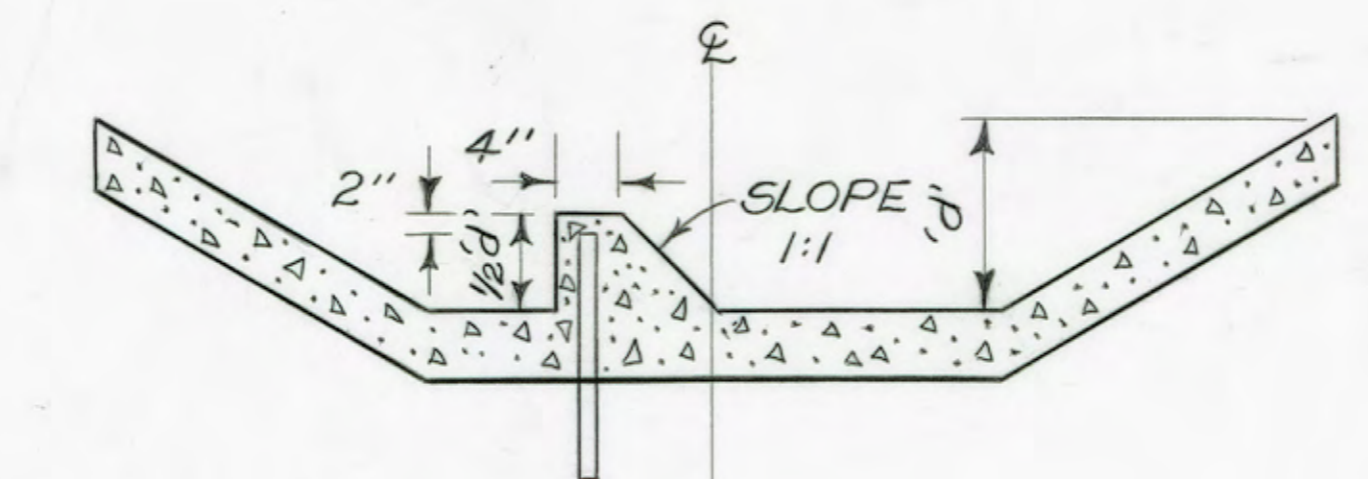


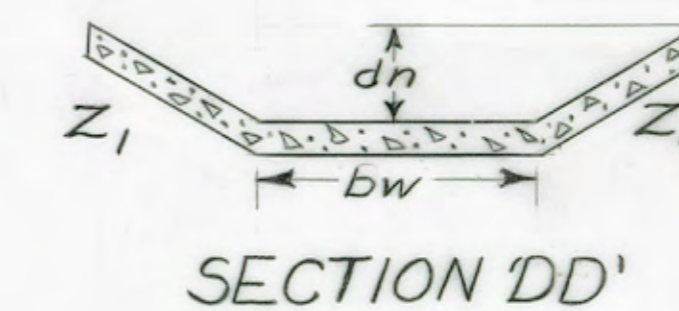
FED. REG. NO.	STATE	PROJECT NUMBER	FISCAL YEAR	SHEET NO.	TOTAL SHEETS
4	ALA.				



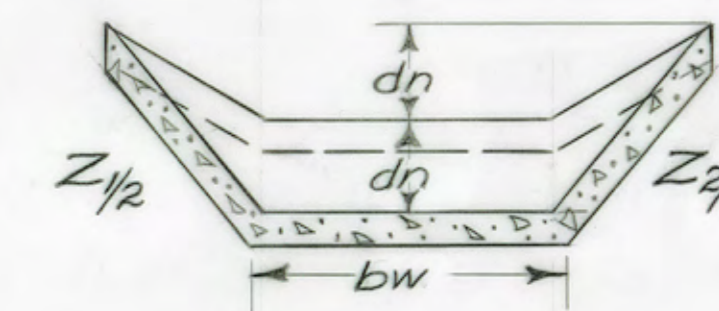
ENERGY DISSIPATOR FOR REDIRECTION OF FLOW



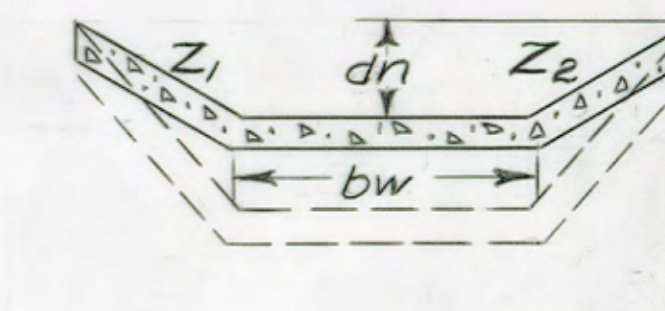
SECTION 'BB'



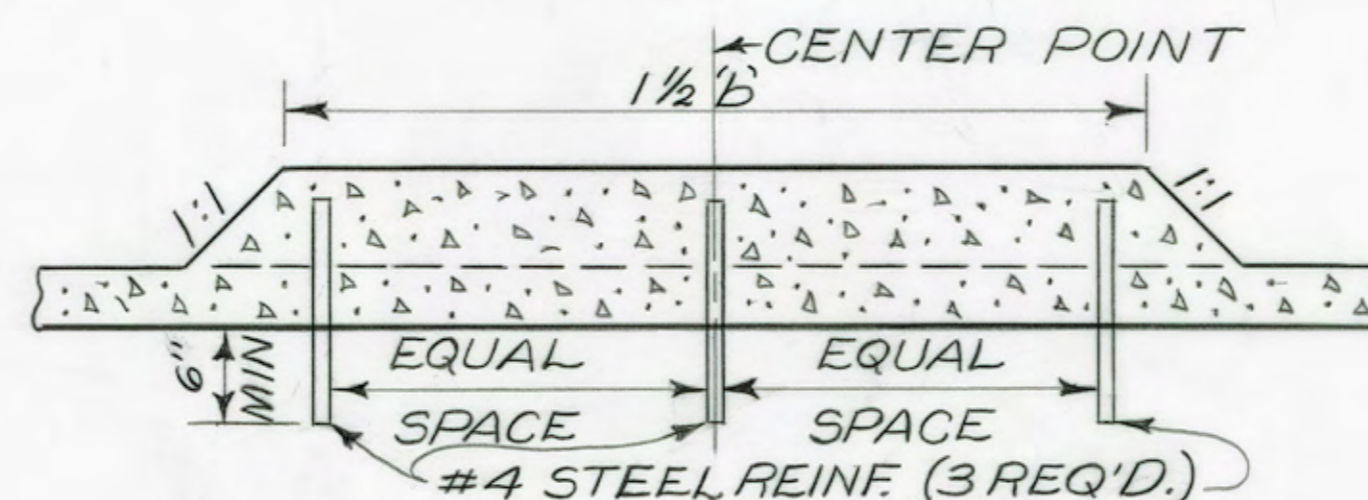
SECTION 'DD'



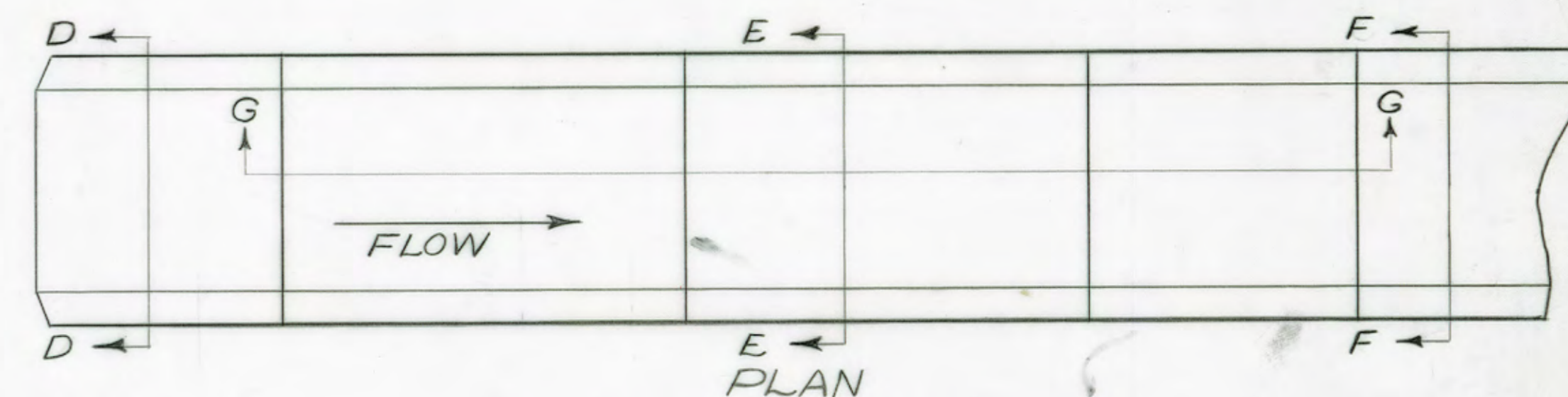
SECTION 'EE'



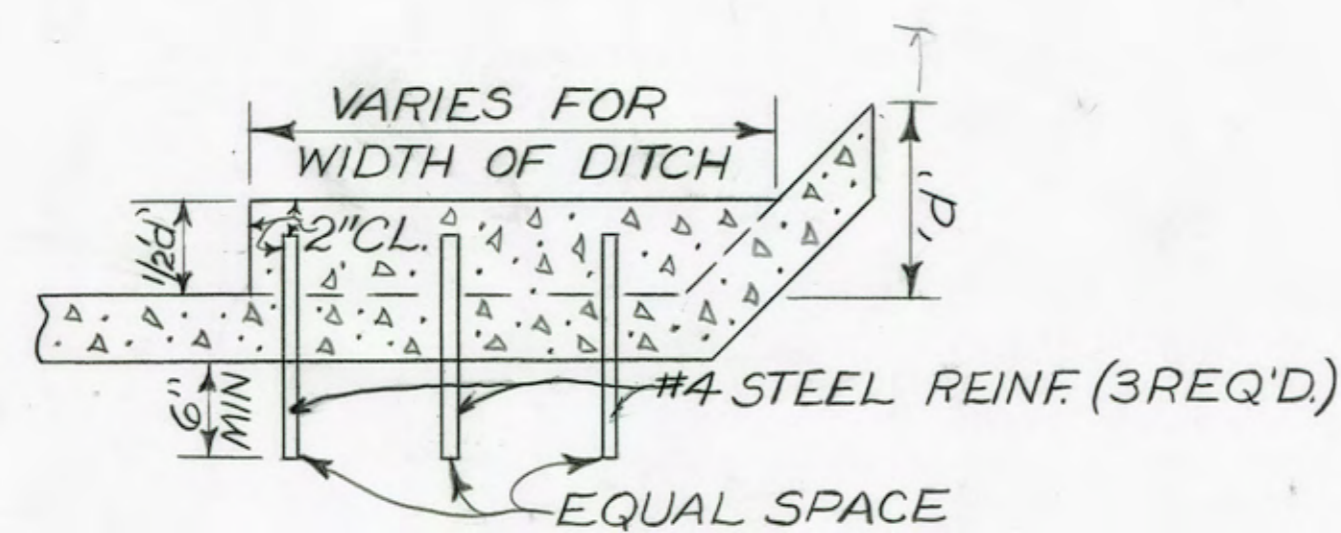
SECTION 'FF'



SECTION 'CC'



ENERGY DISSIPATOR FOR VELOCITY REDUCTION



SECTION 'AA'

Location: Energy Dissipators Shall Be Placed As Shown On The Plans, Or As Directed By The Engineer.

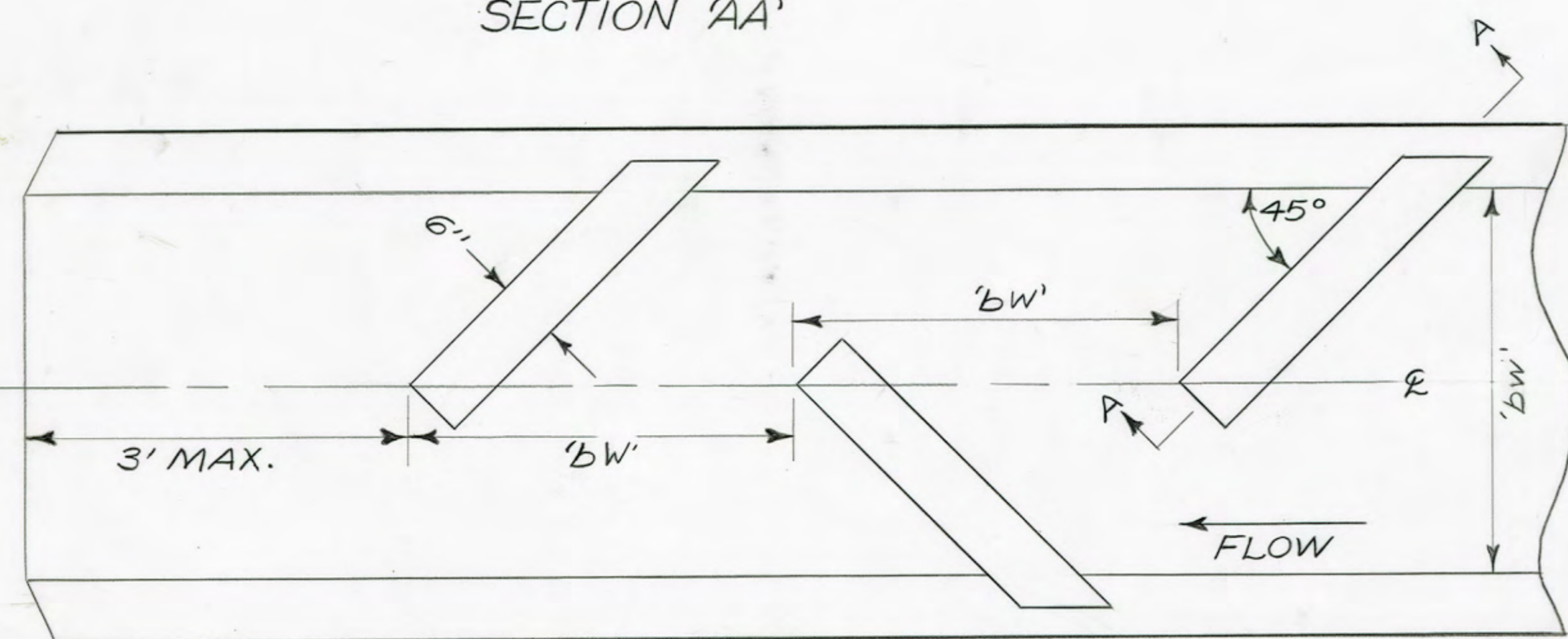
Cost: All Cost Required For Construction Of Energy Dissipators Shall Be A SUBSIDIARY OBLIGATION OF ITEM 61AA

Dimension: For Variable Dimension 'bw', 'd' 1/2 'd' Shall Be No Greater Than 6" In Safety Area Runoff.

Reinforcement: All Steel Reinforcement Shall Have 2" Clearance From Exposed Surfaces.



SECTION 'GG'



ENERGY DISSIPATOR FOR VELOCITY REDUCTION

SHEET NO. OF REVISIONS		STATE OF ALABAMA HIGHWAY DEPARTMENT			
		DETAILS OF ENERGY DISSIPATORS			
APPROVED:	SCALE:	DESIGNED:	QUANTITIES	DATE	
DESIGNER		DRAWN:			
ENGINEER		TRACED:			
		CHECKED:			