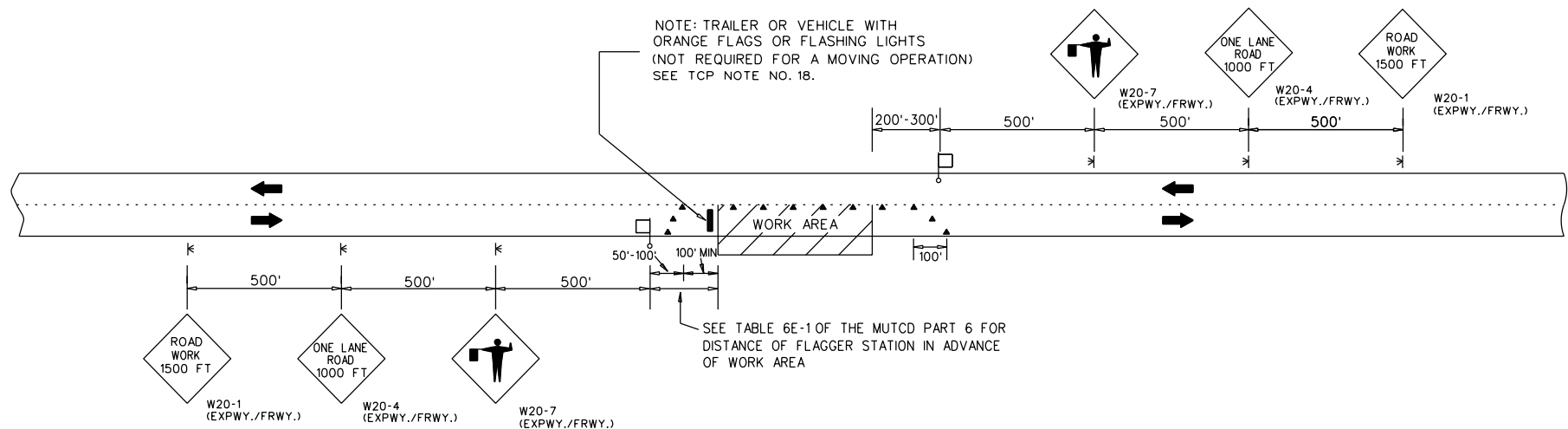


TRAFFIC CONTROL PLAN DETAILS FOR LANE CLOSURE TWO LANE HIGHWAY CONE APPLICATION

PROJECT NO.	FISCAL YEAR	SHEET NO.



TWO LANE HIGHWAY - ONE LANE CLOSED

FOR USE WITH CONES
NOT TO SCALE

END
ROAD WORK
G20-2

(PLACE 500 FT. PAST THE WORK LIMITS
OR SEE TCP NOTE NO.30)

ROAD WORK
NEXT XX MILES
G20-1

(PLACE IN ADVANCE OF THE WORK LIMITS
OR SEE TCP NOTE NO.30)

WHEN WORKERS
ARE PRESENT
BEGIN
HIGHER
FINES
R16-3

END
HIGHER
FINES
R16-3a

(PLACE WITHIN 500 FT. OF THE WORK LIMITS
OR SEE TCP NOTE NO.30)

REVISIONS		ALABAMA DEPARTMENT OF TRANSPORTATION
01/30/07 - REVISED NOTE - ADDED PAY PROVISIONS FOR W20-1(MIN) SIGN	REVISED LANE CLOSURE DIMENSIONS 12/16/19	LOCAL TRANSPORTATION BUREAU
11/27/-7 - DELETED DETAILS FOR W20-1(MIN) SIGN	ADDED R16-3 and R16-3a SIGNS 4/5/21	
08/14/08 - REVISED NOTE NUMBER REFERENCES	ADDED REFERENCE TO TCP NOTE NO. 30 4/13/21	TRAFFIC CONTROL PLAN DETAILS FOR LANE CLOSURE TWO LANE HIGHWAY CONE APPLICATION
07/16/09 - ADDED LEGEND		
10/30/12 - REVISED SIGNS BASED ON SIGN REVISION IN THE 2013 SPEC./STD. DRAWING BOOK		
10/6/17 - CHANGED BUREAU NAME		NOT TO SCALE

LEGEND	
⌵	TEMPORARY MOUNTED SIGN
⌴	POST MOUNTED SIGN
▲	CONES
⌴	FLAGGER