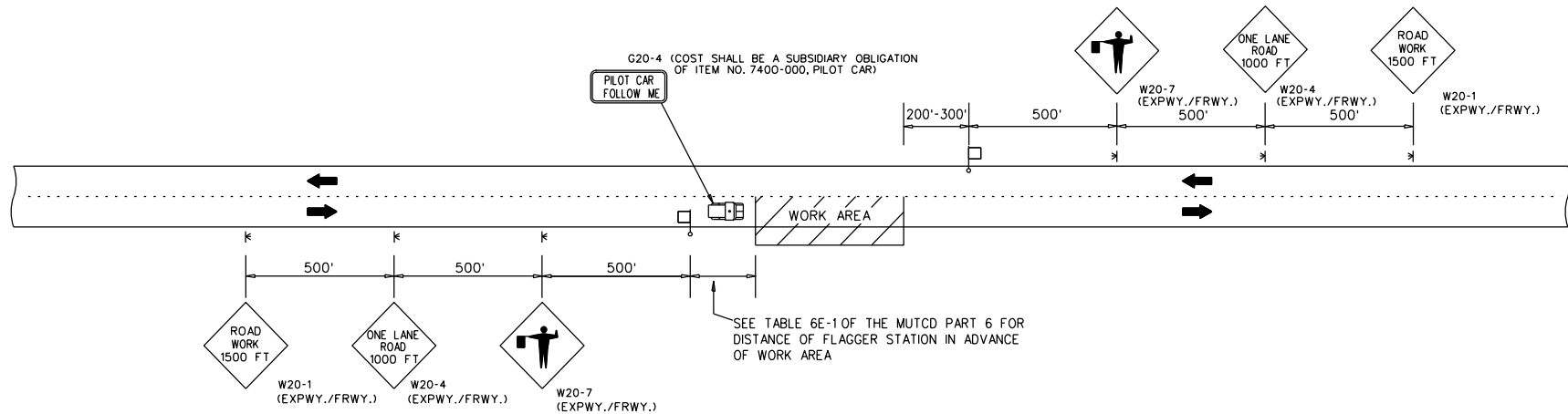


# TRAFFIC CONTROL PLAN DETAILS FOR LANE CLOSURE TWO LANE HIGHWAY PILOT CAR APPLICATION

PROJECT NO.	FISCAL YEAR	SHEET NO.



**END ROAD WORK** G20-2  
(PLACE 500 FT. PAST THE WORK LIMITS  
OR SEE TCP NOTE NO.30)

**ROAD WORK NEXT XX MILES** G20-1  
(PLACE IN ADVANCE OF THE WORK LIMITS  
OR SEE TCP NOTE NO.30)



(PLACE WITHIN 500 FT. OF THE WORK LIMITS  
OR SEE TCP NOTE NO.30)

TWO LANE HIGHWAY - ONE LANE CLOSED  
FOR USE WITH PILOT CAR  
NOT TO SCALE

REVISIONS		ALABAMA DEPARTMENT OF TRANSPORTATION
01/30/07 - REVISED NOTE - ADDED PAY PROVISIONS FOR W20-1(MIN) SIGN	REVISED LANE CLOSURE DIMENSIONS 12/16/19	LOCAL TRANSPORTATION BUREAU
11/27/-7 - DELETED DETAILS FOR W20-1(MIN) SIGN	ADDED R16-3 and R16-3a SIGNS 4/5/21	
08/14/08 - REVISED NOTE NUMBER REFERENCES	ADDED REFERENCE TO TCP NOTE NO. 30 4/13/21	TRAFFIC CONTROL PLAN DETAILS FOR LANE CLOSURE TWO LANE HIGHWAY PILOT CAR APPLICATION  NOT TO SCALE
07/16/09 - ADDED LEGEND		
04/05/10 - ADDED PILOT CAR DETAIL		
10/30/12 - REVISED SIGNS BASED ON SIGN REVISION IN THE 2013 SPEC./STD. DRAWING BOOK		
10/6/17 - CHANGED BUREAU NAME		

LEGEND	
	TEMPORARY MOUNTED SIGN
	POST MOUNTED SIGN
	CONES
	FLAGGER