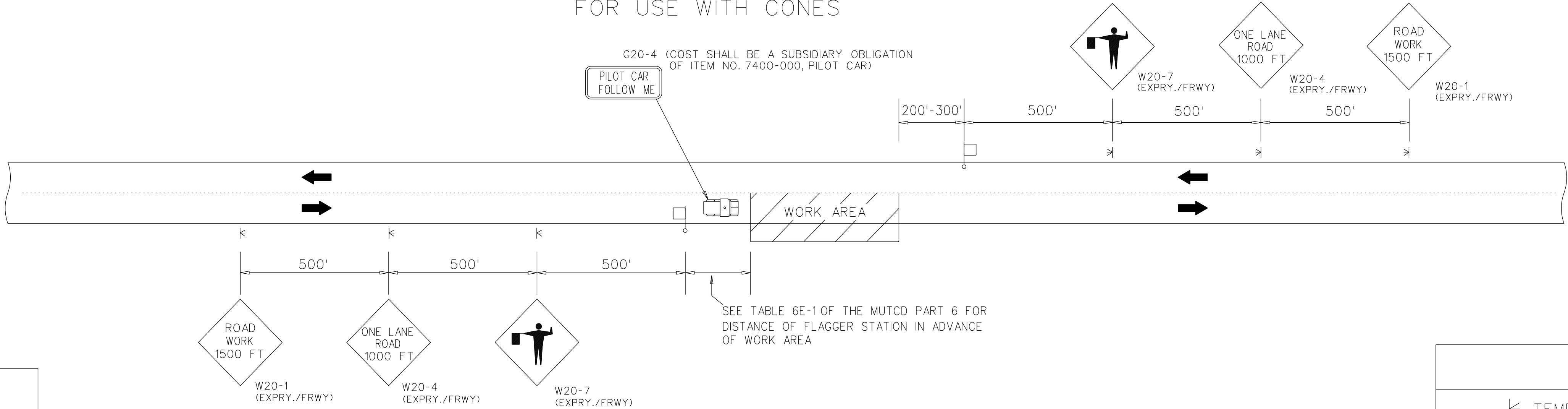
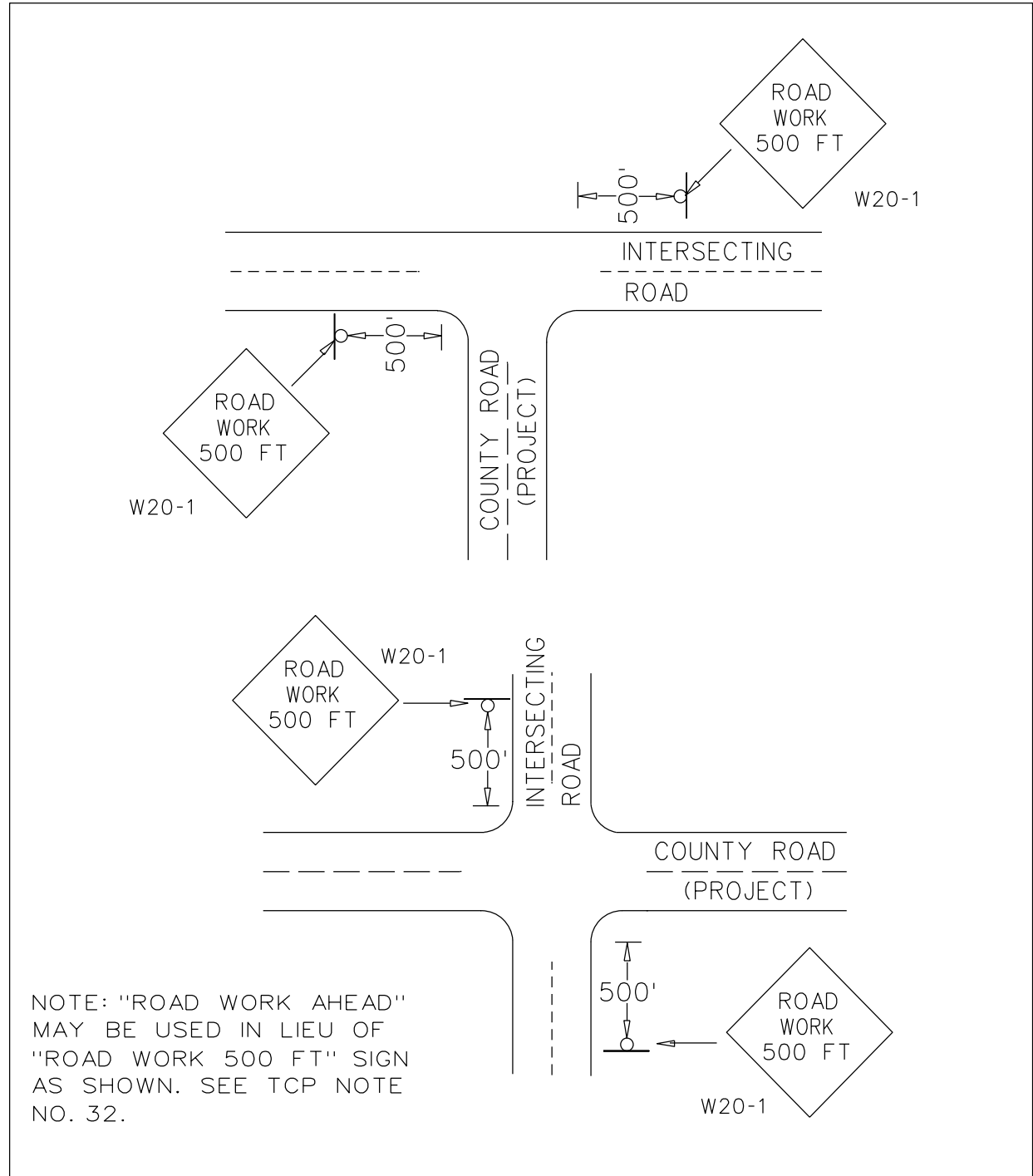


TWO LANE HIGHWAY - ONE LANE CLOSED
FOR USE WITH CONES

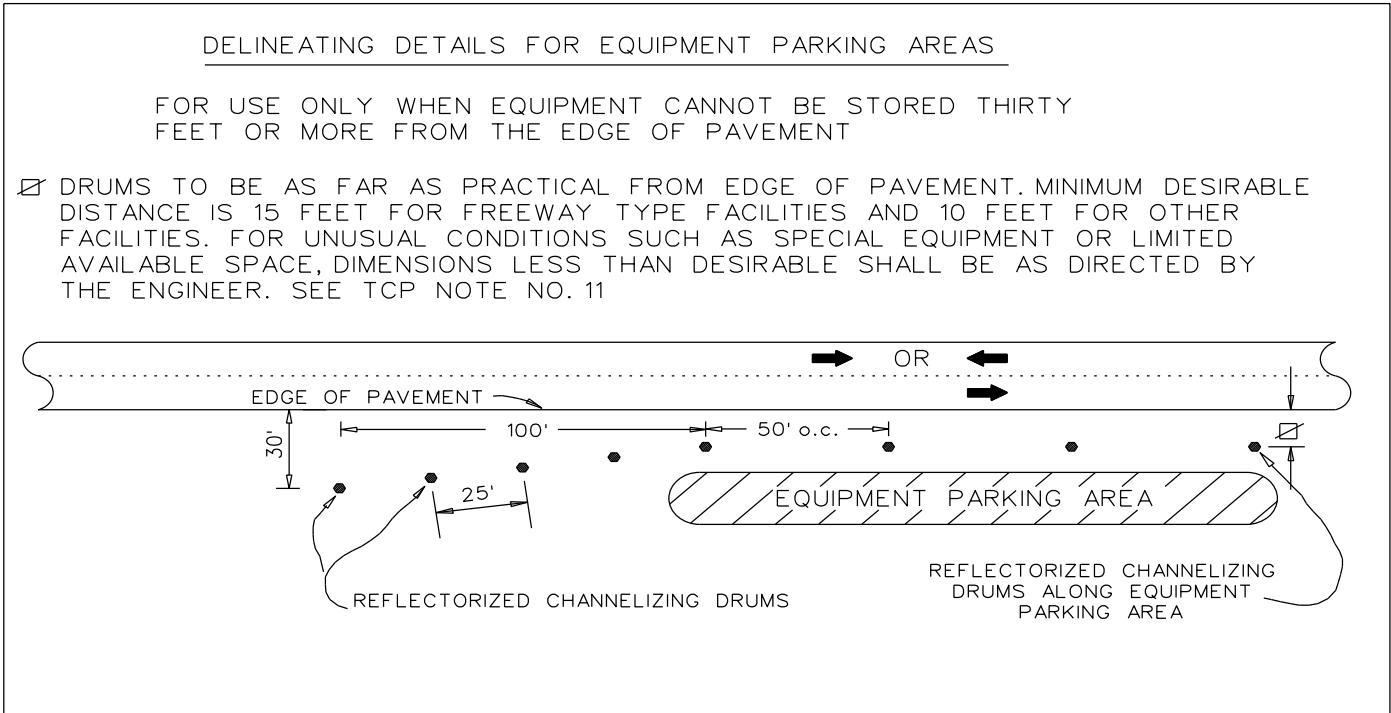


TWO LANE HIGHWAY - ONE LANE CLOSED
FOR USE WITH PILOT CAR

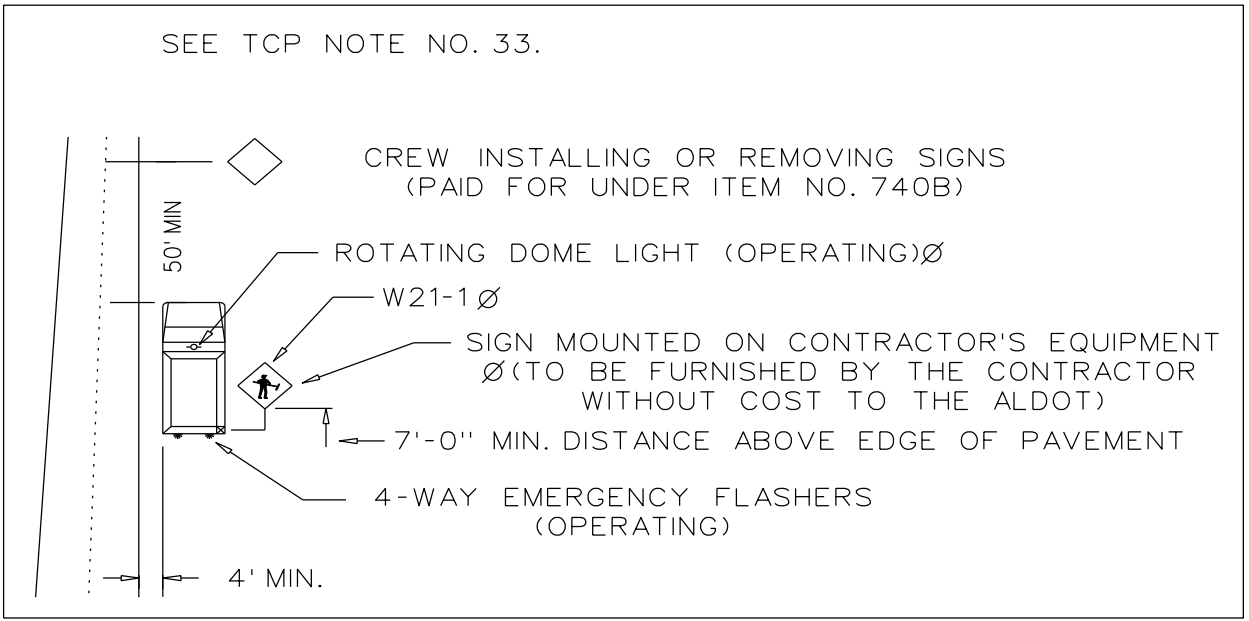
LEGEND
TEMPORARY MOUNTED SIGN
POST MOUNTED SIGN
CONES
FLAGGER



DETAIL FOR PLACEMENT OF W20-1 SIGN AT INTERSECTING ROADS



DELINEATING DETAILS FOR EQUIPMENT PARKING AREAS



T.C.P. FOR INSTALLING OR REMOVING CONSTRUCTION SIGNS

REVISIONS		ALABAMA DEPARTMENT OF TRANSPORTATION LOCAL TRANSPORTATION BUREAU
DRAWN - 01/05/07	REVISED SIGNS BASED ON	
REVISED NOTE - ADDED PAY PROVISIONS FOR W20-1(MIN) SIGN - 01/30/07	SIGN REVISIONS IN THE 2013 SPEC./STD. DRAWING BOOK	
DELETED DETAILS FOR W20-1(MIN) SIGN - 11/27/07	10/30/12	
REVISED NOTE NUMBER REFERENCES - 08/14/08	CHANGED BUREAU NAME IN TITLE BLOCK - 10/6/17	TRAFFIC CONTROL PLAN DETAILS FOR LANE CLOSURE TWO LANE HIGHWAY PILOT CAR AND/OR CONE APPLICATION NOT TO SCALE
ADDED LEGEND - 07/16/09	REVISED LANE CLOSURE DIMENSIONS 12/16/19	
ADDED PILOT CAR DETAIL 04/05/10	ADDED R16-3 AND R16-3a SIGNS 4/5/21	
	ADDED REFERENCE TO TCP NOTE 30 4/13/21	