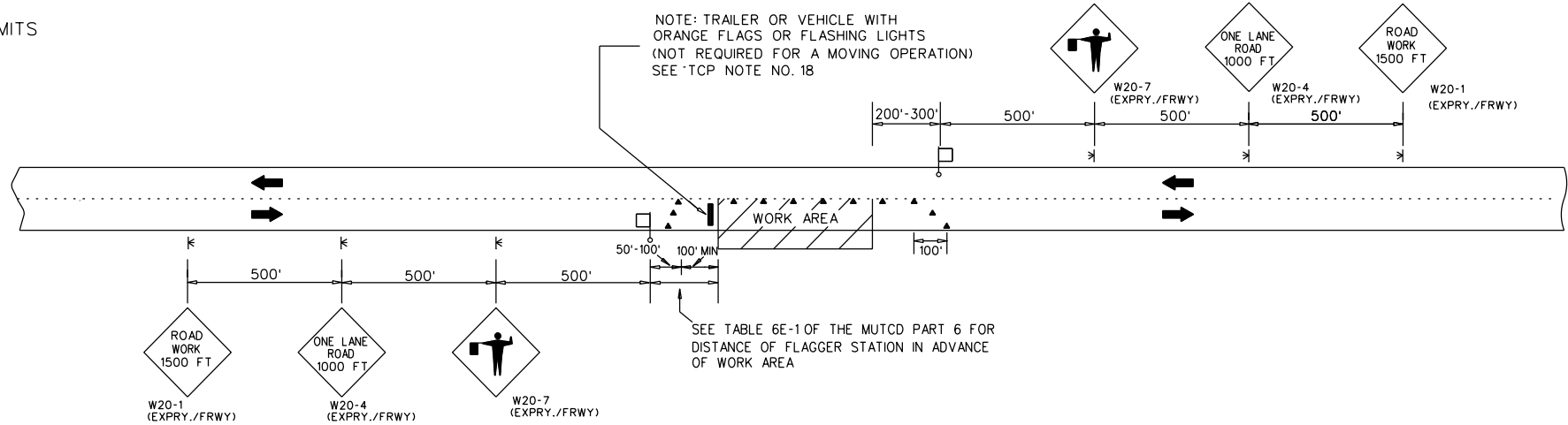


END ROAD WORK G20-2
(PLACE 500 FT. PAST THE WORK LIMITS OR SEE TCP NOTE NO. 30)

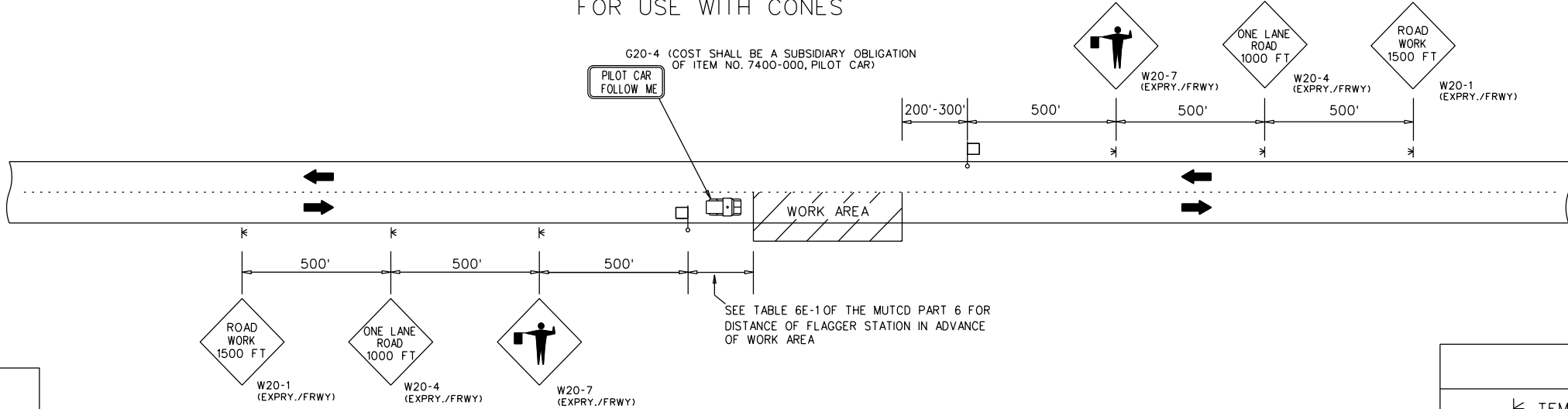
ROAD WORK NEXT XX MILES G20-1
(PLACE IN ADVANCE OF THE WORK LIMITS OR SEE TCP NOTE NO. 30)

WHEN WORKERS ARE PRESENT
BEGIN HIGHER FINES R16-3
END HIGHER FINES R16-3a

(PLACE WITHIN 500 FT. OF THE WORK LIMITS OR SEE TCP NOTE NO. 30)

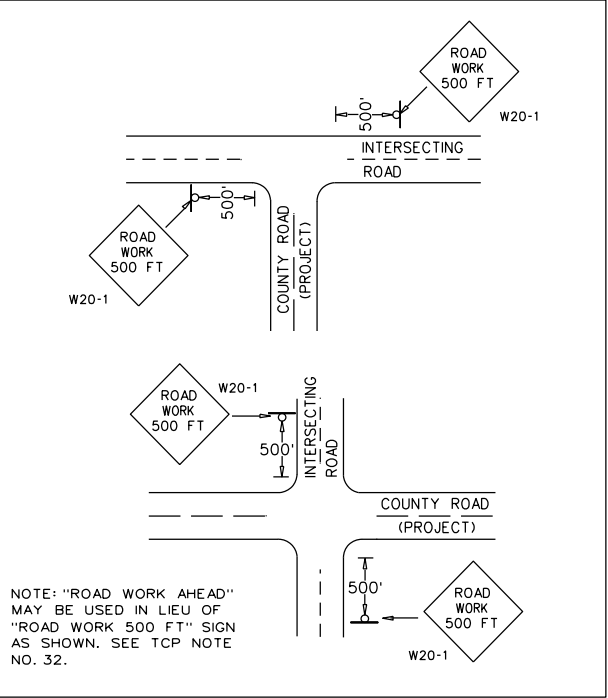


TWO LANE HIGHWAY - ONE LANE CLOSED
FOR USE WITH CONES

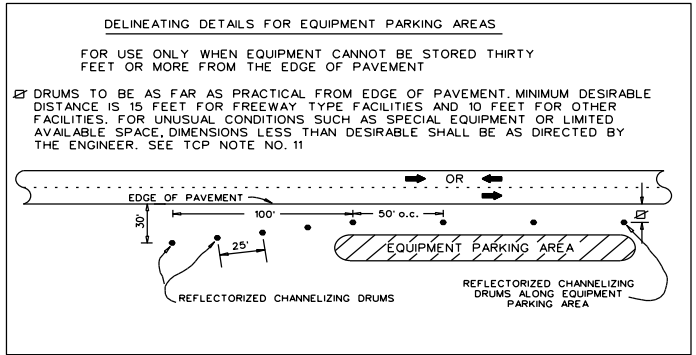


TWO LANE HIGHWAY - ONE LANE CLOSED
FOR USE WITH PILOT CAR

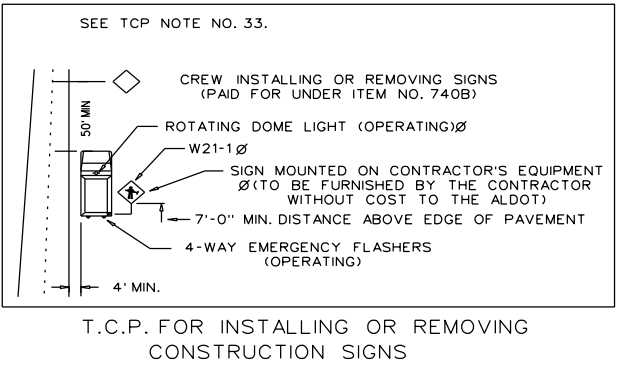
LEGEND
TEMPORARY MOUNTED SIGN
POST MOUNTED SIGN
CONES
FLAGGER



DETAIL FOR PLACEMENT OF W20-1 SIGN AT INTERSECTING ROADS



DELINEATING DETAILS FOR EQUIPMENT PARKING AREAS



T.C.P. FOR INSTALLING OR REMOVING CONSTRUCTION SIGNS

REVISIONS	
DRAWN - 01/05/07	REVISED SIGNS BASED ON SIGN REVISIONS IN THE 2013 SPEC./STD. DRAWING BOOK 10/30/12
REVISED NOTE - ADDED PAY PROVISIONS FOR W20-1(MIN) SIGN - 01/30/07	CHANGED BUREAU NAME IN TITLE BLOCK - 10/6/17
DELETED DETAILS FOR W20-1(MIN) SIGN - 11/27/07	REVISED LANE CLOSURE DIMENSIONS 12/16/19
REVISED NOTE NUMBER REFERENCES - 08/14/08	ADDED R16-3 AND R16-3a SIGNS 4/5/21
ADDED LEGEND - 07/16/09	ADDED REFERENCE TO TCP NOTE 30 4/13/21
ADDED PILOT CAR DETAIL 04/05/10	

ALABAMA DEPARTMENT OF TRANSPORTATION
LOCAL TRANSPORTATION BUREAU
TRAFFIC CONTROL PLAN
DETAILS FOR LANE CLOSURE
TWO LANE HIGHWAY
PILOT CAR AND/OR CONE APPLICATION
NOT TO SCALE