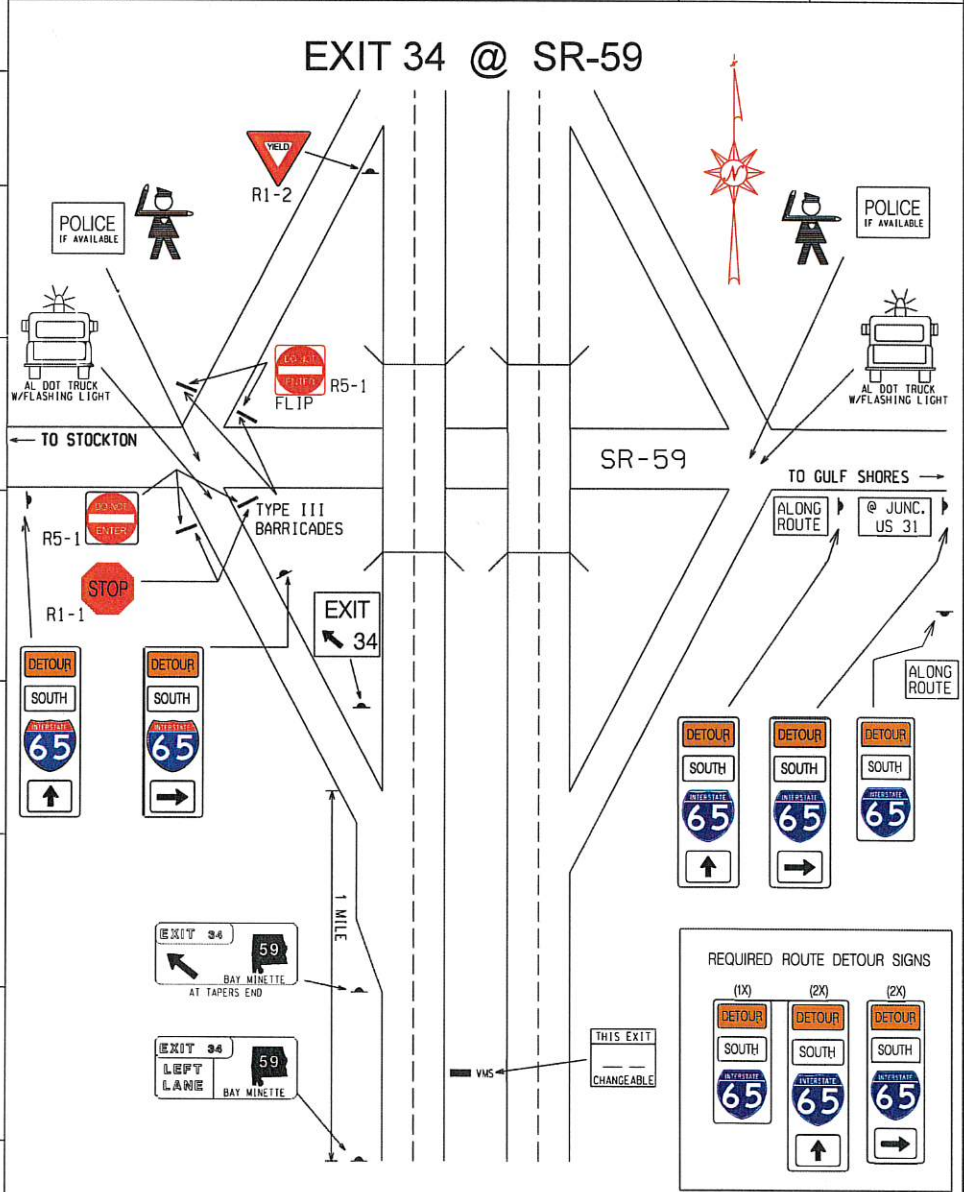


# 3 A

# STEPHEN BLAIR CRAIG PHILLIPS

LOCATION	PERSONNEL	CLASS	TRUCK NUMBER	CELL NO.	MISC. EQUIPMENT
Site 3 Exit 34 SR-59	PAUL PATTERSON	TMT III-CL	ST-16740 Van		W/ Trailer
	LINCOLN MUND	TMT I			
	MARSHALL	TMT II			
	ANDREW GRAHAM	EA I	ST-15793 Pickup		W/ VMS
	BUDDY BURRIS	TMT II			
	ANGELA STEVERSON	TMT I			

- 22 MOBILE AREA IN PLACE PERSONNEL
- 23 TL/ATL IN PLACE
- 26 READY TO IMPLEMENT
- 30 NOTIFY TL TO BEGIN PROCEDURE
- 46 SB ATL PASSED
- 57 ATL'S NB HAVE PASSED
- 59 INTERCHANGE CLEAR
- 67 TRAFFIC REVERSED 1ST WAVE
- 80 1ST WAVE
- 104 TRAFFIC NORMAL



REQUIRED	
2	TYPE III BARRICADES W/STOP SIGNS W/DO NOT ENTER
1	YIELD SIGNS
2	LAW ENFORCEMENT
5	ROUTE DETOUR SIGNS
1	EXIT AHEAD SIGNS
1	EXIT LT. LN. SIGN
1	EXIT SERVICES SIGN
1	EXIT ARROW SIGN

NOTE : COVER ALL INAPPROPRIATE SIGNS