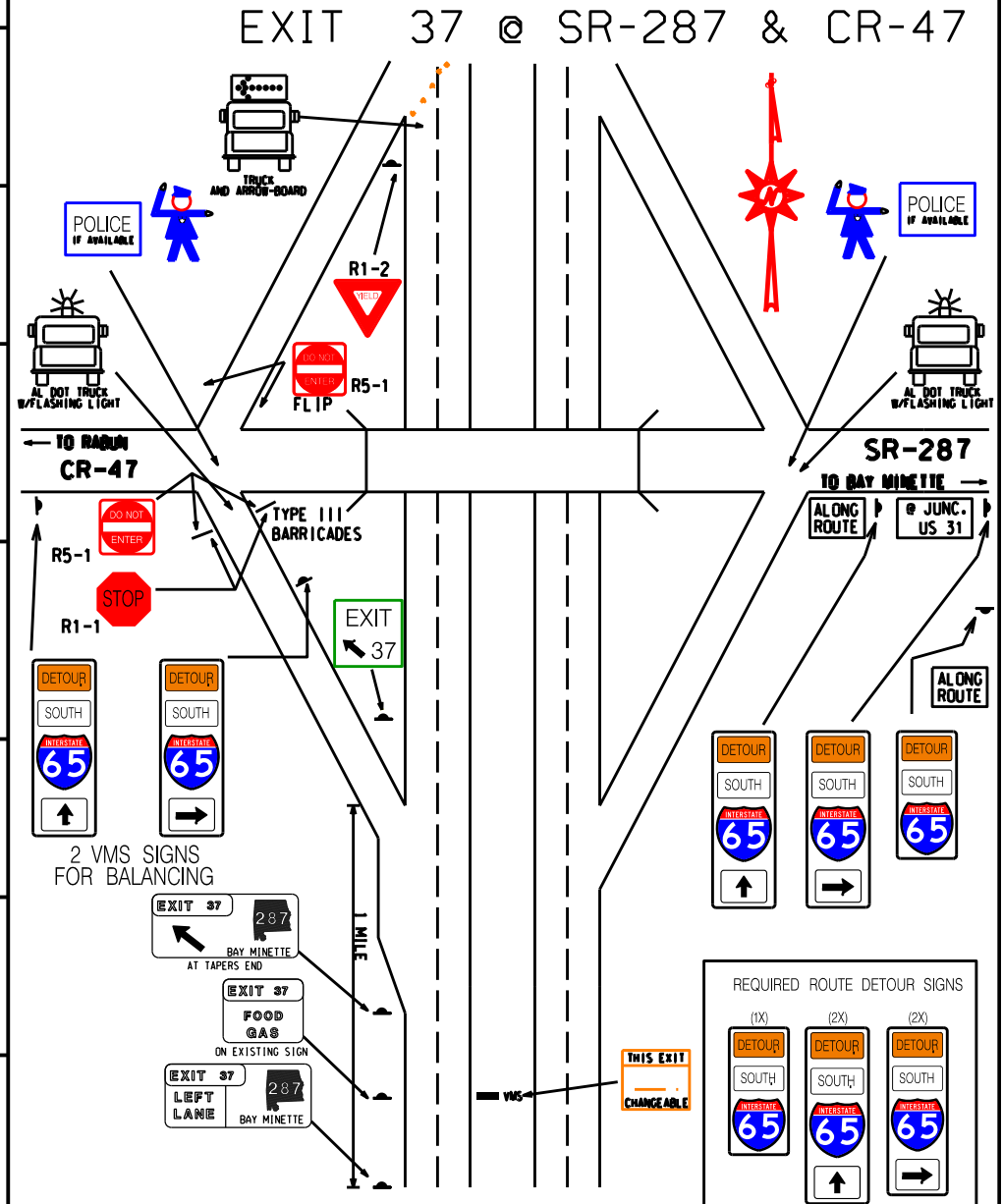


4

BILL WODDAIL SUSAN CANADAY DANIEL JONES

| | |
|-----|--|
| 22 | MOBILE AREA IN PLACE PERSONNEL |
| 23 | TL/ATL IN PLACE |
| 26 | READY TO IMPLEMENT |
| 30 | NOTIFY TL TO BEGIN PROCEDURE |
| 40 | ATL ARRIVES AT TYPE B INTERCHANGE |
| 48 | ATL ARRIVES AT TYPE B INTERCHANGE |
| 57 | ATL'S NB HAVE PASSED |
| 59 | INTERCHANGE CLEAR |
| 67 | TRAFFIC REVERSED |
| 104 | INTERCHANGE CLEAR |
| 114 | TRAFFIC NORMAL |

| LOCATION | PERSONNEL | CLASS | TRUCK NUMBER | HURRICANE RADIO NO. | SOUTHERN LINC NO. | MISC. EQUIPMENT |
|--|-------------------|------------|------------------------|---------------------|-------------------|-----------------|
| Site 4 Exit 37 SR-287 (CR-47) | TOM THOMAS | TMT III-CL | ST-16098 PICKUP | | | W/ TRAILER |
| | WILLIE MIMS | TMT II | | | 251-331-2445 | |
| | JEREMY WASHINGTON | TMT II | | | | |
| | GAVIN THOMPSON | TMT I | | | | |
| | DENNIS CARLTON | TMT II | ST-17373 CREW CAB | | | W/ VMS |
| | MACK HASTINGS | TMT I | ST-17188 FLAT CREW CAB | | | TM/ARW BRD |



- | REQUIRED | |
|----------|---|
| 2 | TYPE III BARRICADES W/STOP SIGNS W/DO NOT ENTER |
| 1 | YIELD SIGNS |
| 2 | LAW ENFORCEMENT |
| 5 | ROUTE DETOUR SIGNS |
| 1 | EXIT AHEAD SIGNS |
| 1 | EXIT LT. LN. SIGN |
| 1 | EXIT SERVICES SIGN |
| 1 | EXIT ARROW SIGN |
| 2 | ALL TRAFFIC MUST EXIT 1/2 MILE SIGNS |
| 2 | ALL TRAFFIC MUST EXIT 1 MILE SIGNS |

NOTE : COVER ALL INAPPROPRIATE SIGNS