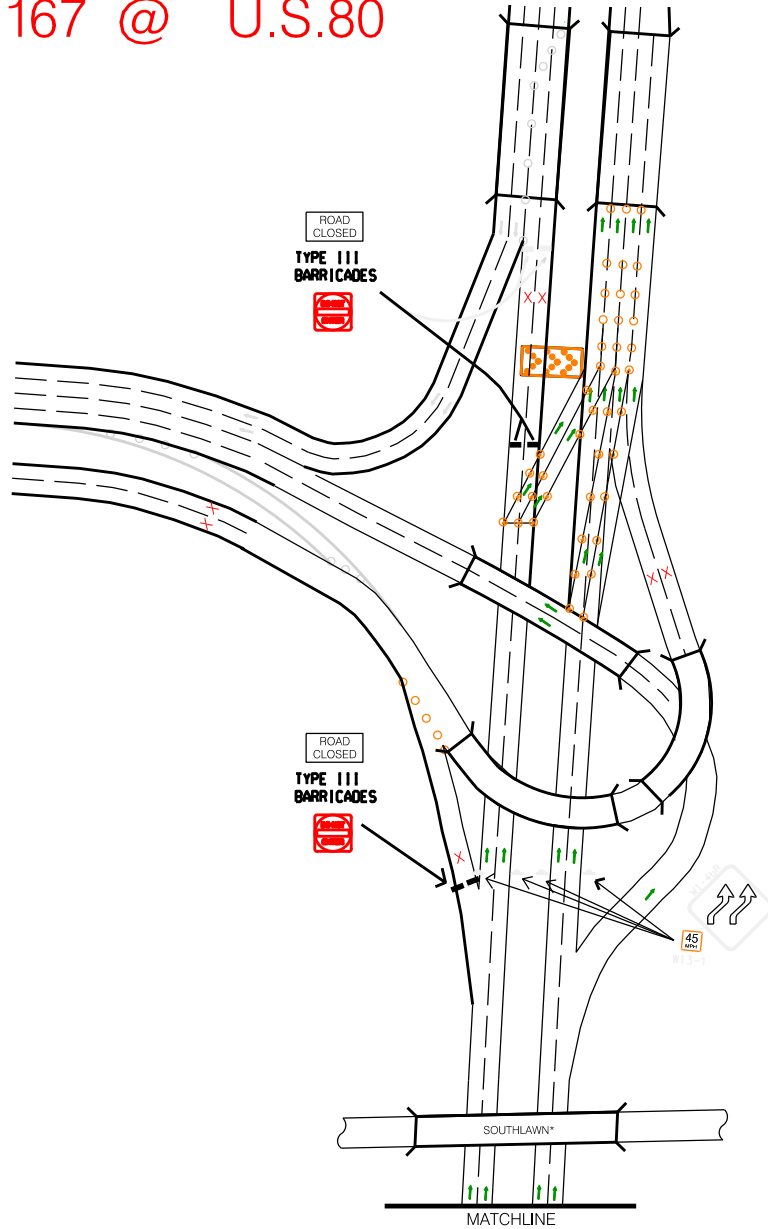


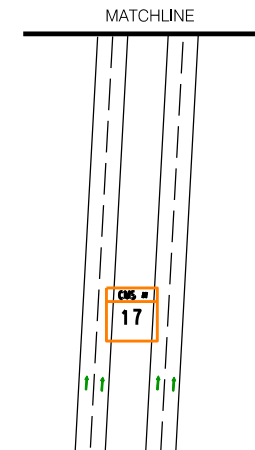
26 LOCATION 26 EXIT 167 @ U.S.80



DAL OGLE JUDSON YOUNG

MONTGOMERY AREA TRAFFIC TEAM
PERSONNEL IN PLACE CONTROL ON SHLD LEADERS IN PLACE LOCATION INSPECTED

PERSONNEL	TRUCK No.
EDWARD EVERSON	ST-16919 CREW CAB
LAMAR ANDERSON	ST-18242 EXT CAB



CMS Message:
"ALL LANES I-65 N."
"LANE SHIFT AHEAD"