

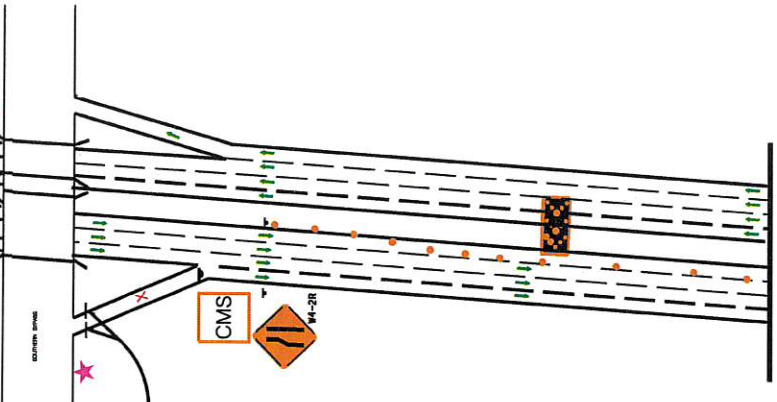
27 LOCATION 27 SB TERMINUS EXIT 167 US80 TO US31

PHILLIP DAY
DUDLEY SMITH

MONTGOMERY AREA TRAFFIC CONTROL PERSONNEL IN PLACE TEAM LEADERS ON SHLD IN PLACE LOCATION INSPECTED



TYPE I11 BARRIERS
ROAD CLOSED
R11-2
R11-1



Start 240' shoulder taper

Start 720' lane taper

Start 1440' channelization

MATCHLINE B
CMS MESSAGE:
"I-65 SOUTH CLOSED"
"DETOUR NEXT EXIT"

PERSONNEL	TRUCK No.
ARTIS BAXTER	ST-18468 ATTENUATOR
MICHAEL THOMPSON	ST-16717
STEVEN DERAMUS	ST-17295 FORD CREW CAB/SERVICE
KYLE JUNKIN	
ANDRE TYSON	ST-17773

★ NOTE: CONFLICTING I-65 SOUTH SIGNS WHICH REQUIRE COVERING