

27

LOCATION 27
SB TERMINUS EXIT 167
US80 TO US31

PHILLIP DAY

ANDREW SMITH

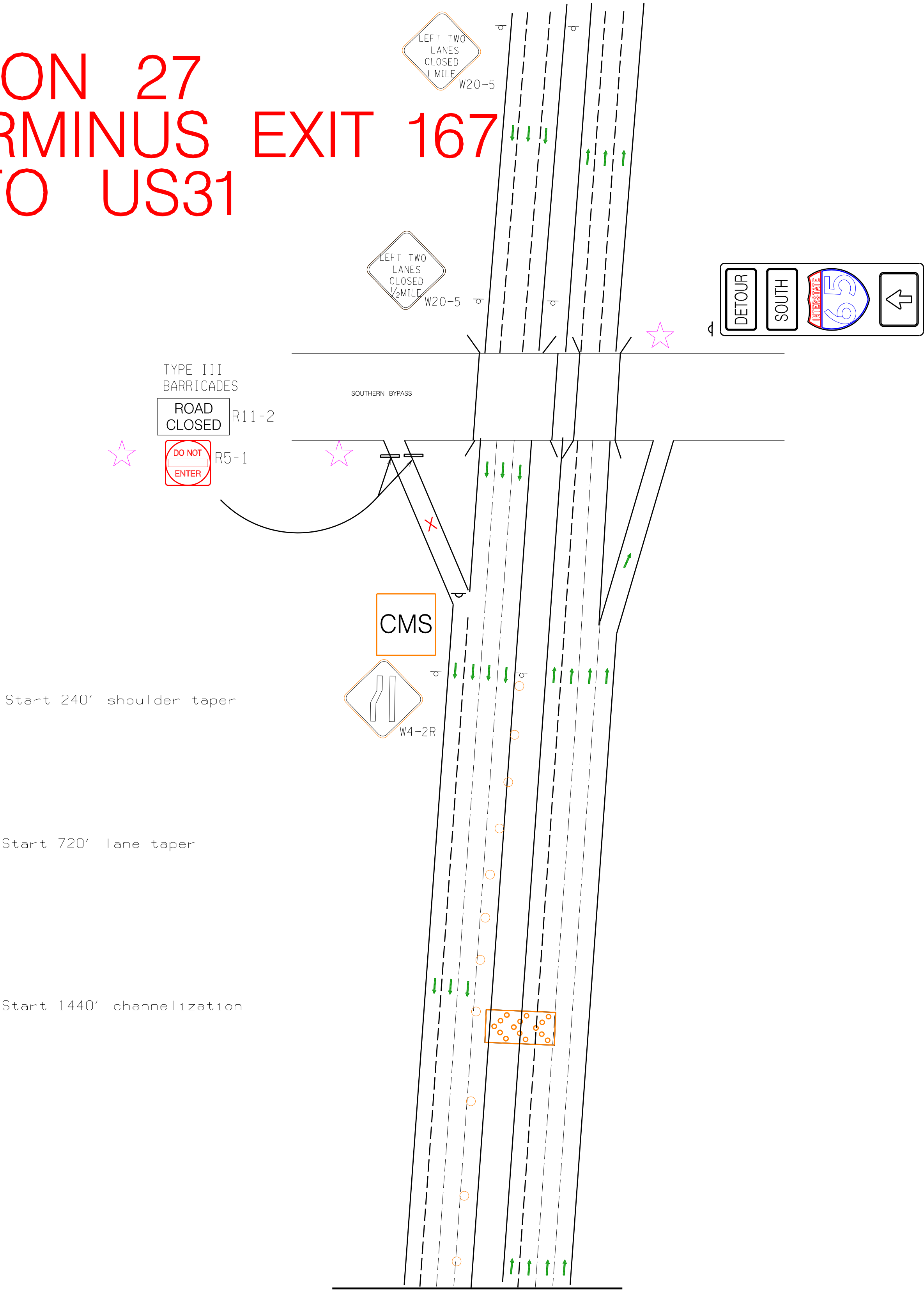
MONTGOMERY AREA
PERSONNEL
IN PLACE

TRAFFIC
CONTROL
ON SHLD

TEAM
LEADERS
IN PLACE

LOCATION
INSPECTED

PERSONNEL	TRUCK No.
ARTIS BAXTER	ST-16107 ATTENUATOR
AMAD JACKSON	ST-16717
KYLE JUNKIN	ST-17255 FORD CREW CAB/SERVICE
ANDRE TYSON	
RONALD DENHAM	
WAYNE JACKSON	



Start 240' shoulder taper

Start 720' lane taper

Start 1440' channelization

MATCHLINE B

CMS MESSAGE:

"I-65 SOUTH CLOSED"

"DETOUR NEXT EXIT"

☆ NOTE: CONFLICTING I-65 SOUTH SIGNS
WHICH REQUIRE COVERING

REVISED: JUNE 1, 2025