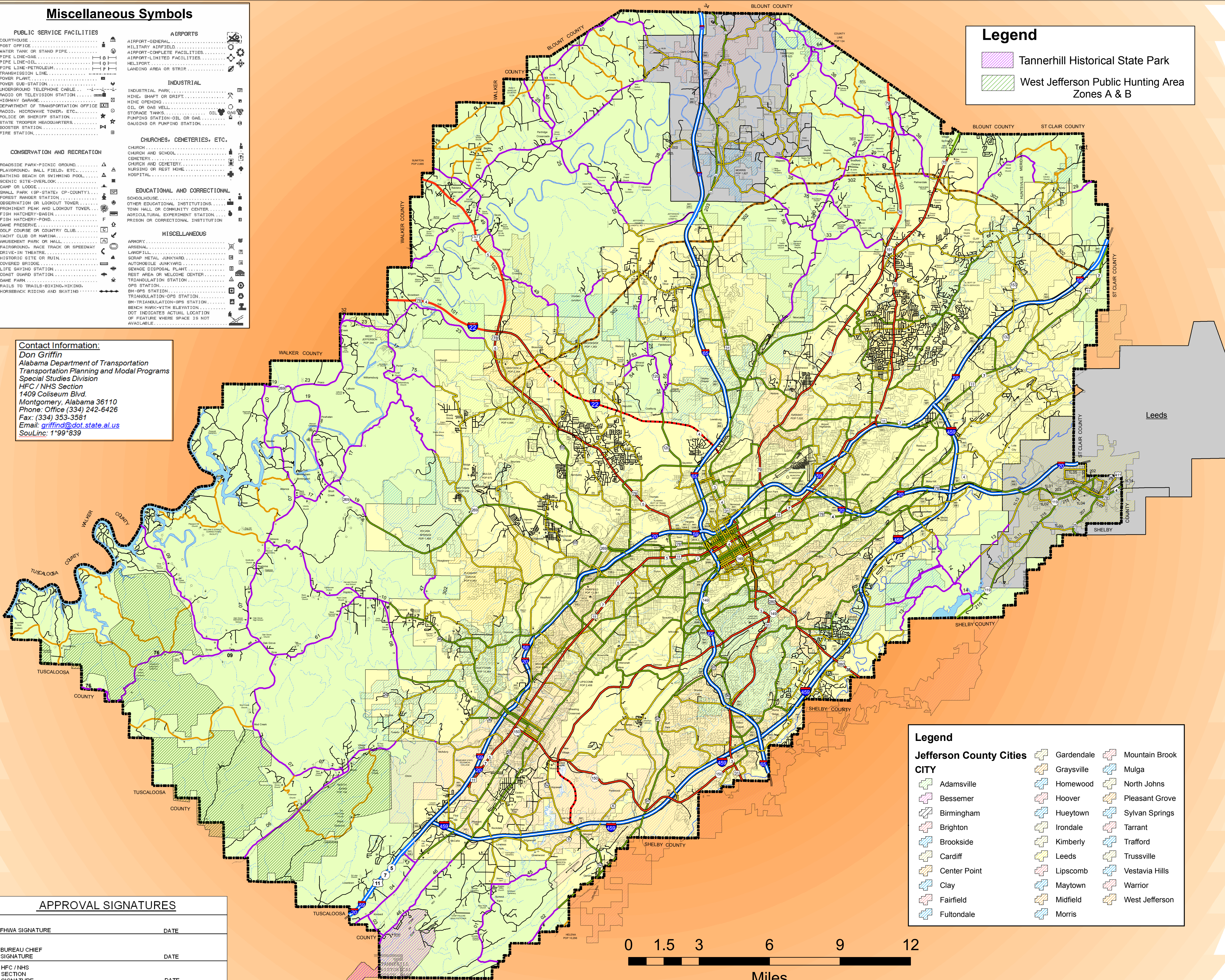


JEFFERSON COUNTY HIGHWAY FUNCTIONAL CLASSIFICATION SYSTEM

Miscellaneous Symbols

PUBLIC SERVICE FACILITIES	AIRPORTS
COURTHOUSE	AIRPORT-GENERAL
POST OFFICE	MILITARY AIRFIELD
WATER TANK OR STAND PIPE	AIRPORT-COMPLET FACILITIES
PIPE LINE-OIL	AIRPORT-LIMITED FACILITIES
PIPE LINE-PETROLEUM	HELIPORT
TRANSMISSION LINE	LANDING AREA OR STRIP
POWER PLANT	
POWER SUB-STATION	INDUSTRIAL
UNDERGROUND TELEPHONE CABLE	INDUSTRIAL PARK
RADIO OR TELEVISION STATION	MINE-SHAFT OR DRIFT
HIGHWAY GARAGE	MINE OPENING
DEPARTMENT OF TRANSPORTATION OFFICE	OIL OR GAS WELL
POLICE OR SHERIFF STATION	STORAGE TANKS
STATE TROOPER HEADQUARTERS	PUMPING STATION-OIL OR GAS
BOOSTER STATION	GAUGING OR PUMPING STATION
FIRE STATION	
	CHURCHES, CEMETERIES, ETC.
CONSERVATION AND RECREATION	CHURCH
ROADSIDE PARK-PICNIC GROUND	CHURCH AND SCHOOL
PLAYGROUND, BALL FIELD, ETC.	CEMETERY
BATHING BEACH OR SWIMMING POOL	CENOTAPH AND CROSS
CAMP OR LODGE	NURSING OR REST HOME
SCENIC SITE-OVERLOOK	HOSPITAL
FOREST RANGER STATION	
OBSERVATION OR LOOKOUT TOWER	EDUCATIONAL AND CORRECTIONAL
PROHIBIT FISH AND LOOKOUT TOWER	SCHOOLHOUSE
FISH HATCHERY-BASIN	OTHER EDUCATIONAL INSTITUTIONS
FISH HATCHERY-POND	TOWN HALL OR COMMUNITY CENTER
ONE PRESERVE	AGRICULTURAL EXPERIMENT STATION
GOLF COURSE OR COUNTRY CLUB	PRISON OR CORRECTIONAL INSTITUTION
YACHT CLUB OR MARINA	
AMUSEMENT PARK OR MALL	MISCELLANEOUS
FAIRGROUND, RACE TRACK OR SPEEDWAY	ARMORY
DRIVE-IN THEATRE	ARENAL
COVERED BRIDGE	SCRAP METAL YARD
LIFE SAVING STATION	AUTOMOBILE JUNKYARD
COAST GUARD STATION	SEWAGE DISPOSAL PLANT
GAME FARM	REST AREA OR WELCOME CENTER
RAILS TO TRAILS-BIKING-HIKING	TRANSFORMATION STATION
HORSEBACK RIDING AND SKIING	OPS STATION
	BI-OPS STATION
	TRANSFORMATION-OPS STATION
	BI-TRANSFORMATION-OPS STATION
	BENCH MARK-WITH ELEVATION
	DOT INDICATES ACTUAL LOCATION
	OF FEATURE WHERE SPACE IS NOT AVAILABLE

Contact Information:
 Don Griffin
 Alabama Department of Transportation
 Transportation Planning and Modal Programs
 Special Studies Division
 HFC / NHS Section
 1409 Coliseum Blvd.
 Montgomery, Alabama 36110
 Phone: Office (334) 242-6426
 Fax: (334) 353-3581
 Email: griffin@dot.state.al.us
 SouLin: 1-99-839



Legend

- Tannerhill Historical State Park
- West Jefferson Public Hunting Area Zones A & B

Legend	
Functional Classification	Proposed Functional Class
Urban Interstate - 11	Urban Interstate - 11
Freeway - 12	Freeway - 12
Urban Principal Arterial - 14	Urban Principal Arterial - 14
Urban Minor Arterial - 16	Urban Minor Arterial - 16
Collector - 17	Collector - 17
Rural Interstate - 1	Rural Interstate - 1
Rural Principal Arterial - 2	Rural Principal Arterial - 2
Rural Minor Arterial - 6	Rural Minor Arterial - 6
Rural Major Collector - 7	Rural Major Collector - 7
Rural Minor Collector - 8	Rural Minor Collector - 8
Miscellaneous Items	
GIS.OpenWater_ALDOTDivisions	INTERSTATE
GIS.NHD_by_County	US ROUTES
GIS_Swamp_Marsh_HR_NHDWB_County	STATE ROUTES
TRANSDATA.urban_large	COUNTY ROADS
TRANSDATA.urban_large_study	FOREST ROADS
TRANSDATA.urban_small	
GIS.County	

MAP SCALE
SEE SCALE ON MAP

NORTH

Disclaimer of Liability
 Due to the scale of this map neither the Alabama Department of Transportation (ALDOT) or the State of Alabama nor any employees and contractors thereof, make any warranty, expressed or implied, or assumes any legal liability, or responsibility, for the accuracy, completeness, or usefulness of any information contained on this map.

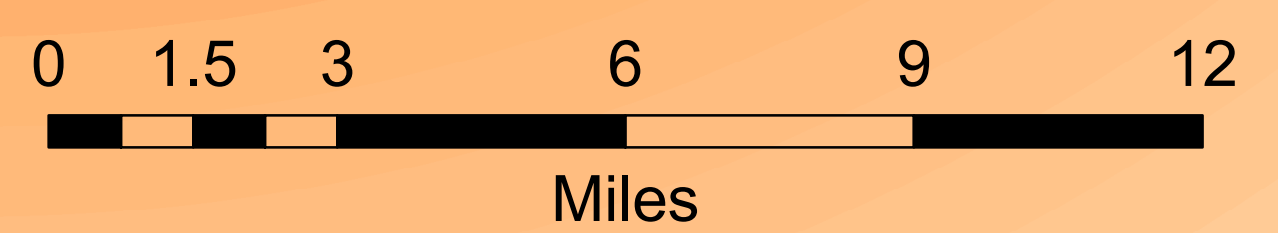
APPROVAL SIGNATURES

FHWA SIGNATURE	DATE
BUREAU CHIEF SIGNATURE	DATE
HFC / NHS SECTION SIGNATURE	DATE

Legend

Jefferson County Cities

Adamsville	Gardendale	Mountain Brook
Bessemer	Graysville	Mulga
Birmingham	Homewood	North Johns
Brighton	Hoover	Pleasant Grove
Brookside	Hueytown	Sylvan Springs
Cardiff	Irondale	Tarrant
Center Point	Kimberly	Trafford
Clay	Leeds	Trussville
Fairfield	Lipscomb	Vestavia Hills
Fultondale	Maytown	Warrior
	Midfield	West Jefferson
	Morris	



JEFFERSON COUNTY - 37

ALABAMA DEPARTMENT OF TRANSPORTATION
 Highway Functional Classification
 Transportation Planning / Modal Programs Bureau



FHWA APPROVAL DATE		DRAWN BY: D.H. GRIFFIN	
DATE	April 18, 2005	DATE DRAWN:	NOVEMBER 13, 2008
NAME	DATE	COMMENTS	