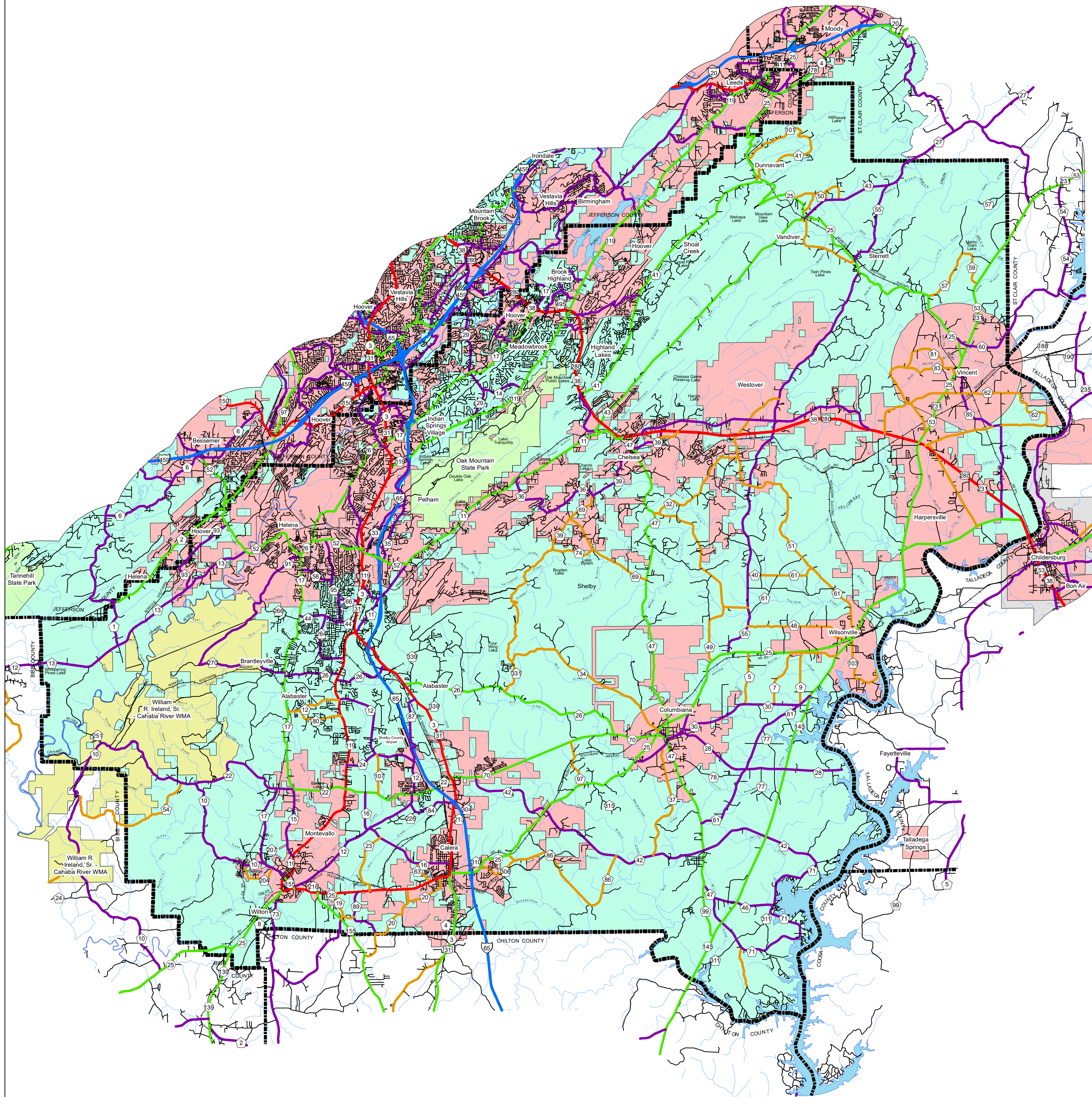


SHELBY COUNTY HIGHWAY FUNCTIONAL CLASSIFICATION SYSTEM



APPROVED SIGNATURES	
Federal Highway Administration	DATE
Bureau Chief Maintenance	DATE



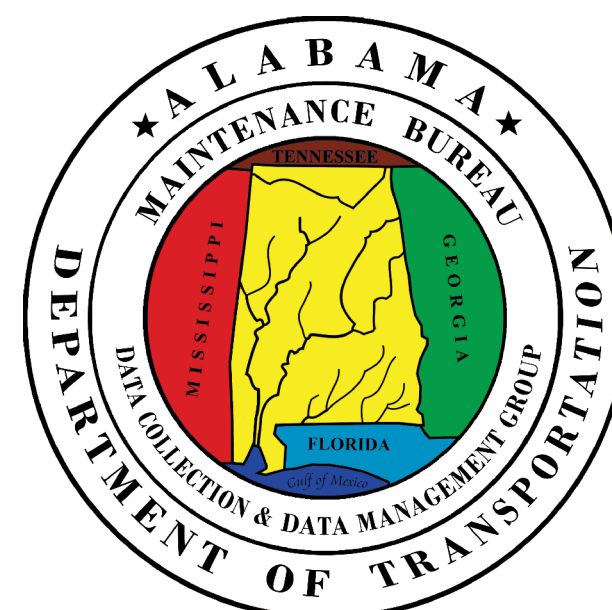
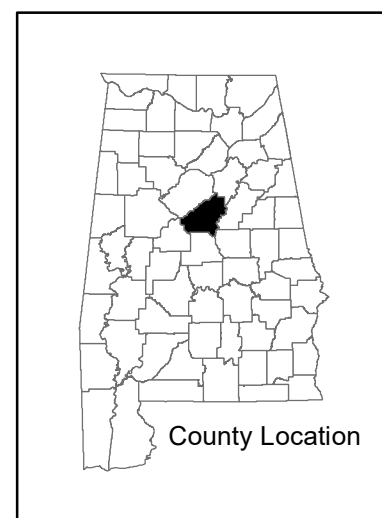
SHELBY COUNTY ALABAMA DEPARTMENT OF TRANSPORTATION Highway Functional Classification

REVISIONS

DATE	COMMENTS
August, 2022	Added New Border and Legend

Disclaimer of Liability:
Due to the scale of this map neither the Alabama Department of Transportation (ALDOT) or the State of Alabama nor any employee and contractor thereof make any warranty, expressed or implied, or assume any legal liability or responsibility for the accuracy, completeness, or usefulness of any information contained on this map.

FHWA APPROVAL DATE
DATE: February, 2023



- LEGEND**
Highway Functional Classification
- 1 Interstate
 - 2 Principal Arterial-Other Freeways and Expressways
 - 3 Principal Arterial- Other
 - 4 Minor Arterial
 - 5 Major Collector
 - 6 Minor Collector
 - 7 Local Road
 - Proposed Road
 - Open Water
 - Streams / Creeks
 - WildLife Management Area
 - Large Urban Area
 - Large Urban Study Area
 - Small Urban Area
 - Federal Lands
 - County Boundary
- Railroad
 INTERSTATE
 U.S.
 STATE
 COUNTY
 City Limit
 State Parks



Federal Highway Administration
Alabama Division Office