

LAUDERDALE COUNTY HIGHWAY FUNCTIONAL CLASSIFICATION SYSTEM

Legend

Functional Classification

- Urban Interstate - 11
- Freeway - 12
- Urban Principal Arterial - 14
- Urban Minor Arterial - 16
- Collector - 17
- Rural Interstate - 1
- Rural Principal Arterial - 2
- Rural Minor Arterial - 6
- Rural Major Collector - 7
- Rural Minor Collector - 8

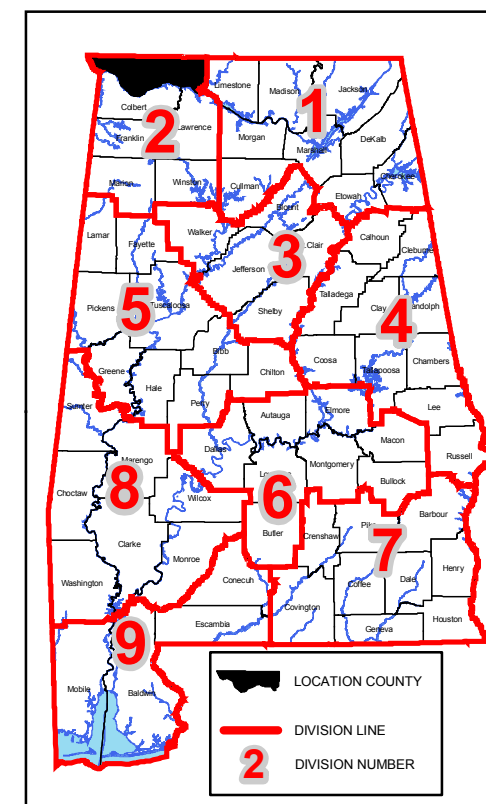
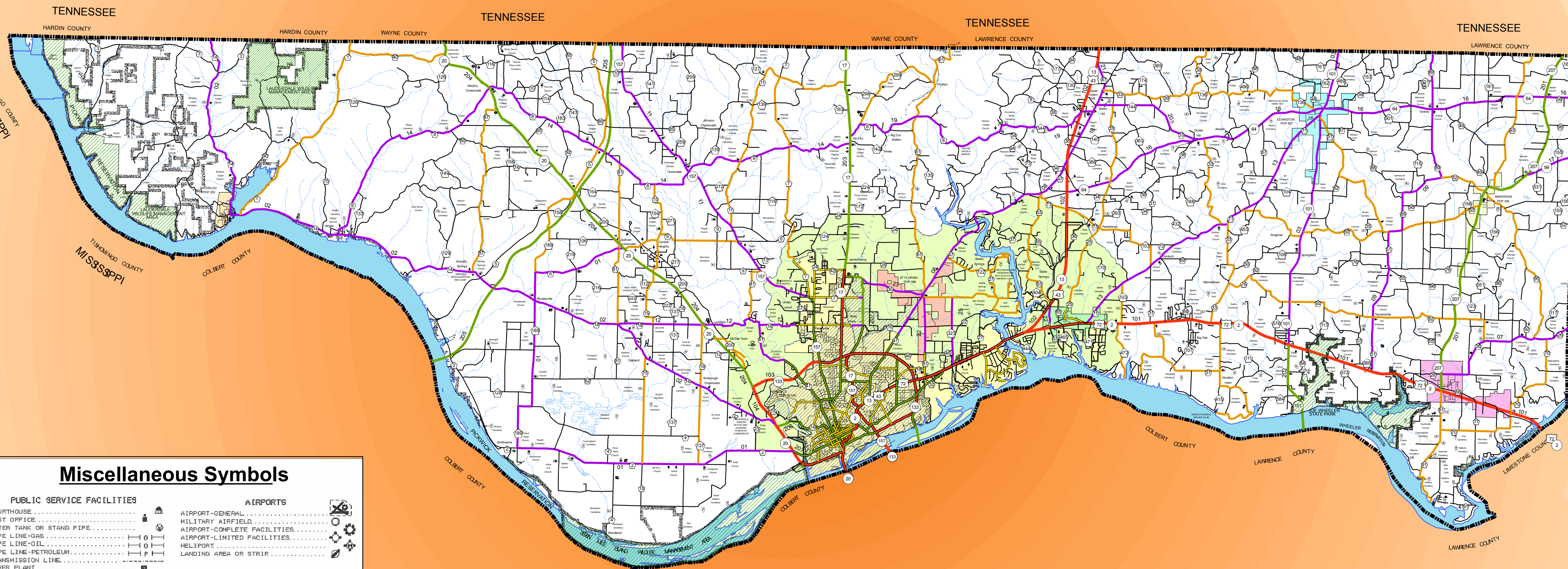
Proposed Functional Class

- Urban Interstate - 11
- Freeway - 12
- Urban Principal Arterial - 14
- Urban Minor Arterial - 16
- Collector - 17
- Rural Interstate - 1
- Rural Principal Arterial - 2
- Rural Minor Arterial - 6
- Rural Major Collector - 7
- Rural Minor Collector - 8

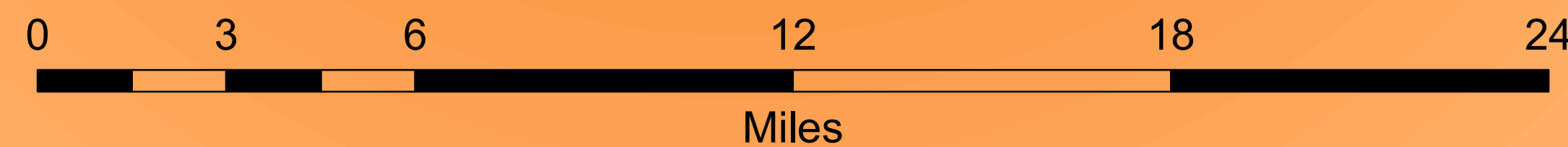
Miscellaneous Items

- GIS.OpenWater_ALDOTDivisions
- GIS.NHD_by_County
- GIS_Swamp_Marsh_HR_NHDWB_County
- TRANSDATA.urban_large
- TRANSDATA.urban_large_study
- TRANSDATA.urban_small
- GIS.County
- INTERSTATE
- US ROUTES
- STATE ROUTES
- COUNTY ROADS
- FOREST ROADS
- Lauderdale County Cities
- Anderson
- Florence
- Killen
- Lexington
- Rogersville
- St. Florain
- Waterloo

MAP SCALE
SEE SCALE ON MAP



Disclaimer of Liability
Due to the scale of this map neither the Alabama Department of Transportation (ALDOT) or the State of Alabama nor any employees and contractors thereof, make any warranty, expressed or implied, or assumes any legal liability, or responsibility, for the accuracy, completeness, or usefulness of any information contained on this map.



Miscellaneous Symbols

- | | |
|--|--|
| PUBLIC SERVICE FACILITIES
COURTHOUSE
POST OFFICE
WATER TANK OR STAND PIPE
PIPE LINE-GAS
PIPE LINE-OIL
PIPE LINE-PETROLEUM
TRANSMISSION LINE
POWER PLANT
POWER SUB-STATION
UNDERGROUND TELEPHONE CABLE
RADIO OR TELEVISION STATION
HIGHWAY DAMAGE
DEPARTMENT OF TRANSPORTATION OFFICE
RADIO, MICROWAVE TOWER, ETC.
POLICE OR SHERIFF STATION
STATE TROOPER HEADQUARTERS
BOOSTER STATION
FIRE STATION | AIRPORTS
AIRPORT-GENERAL
MILITARY AIRFIELD
AIRPORT-COMLETE FACILITIES
AIRPORT-LIMITED FACILITIES
HELIPORT
LANDING AREA OR STRIP |
| CONSERVATION AND RECREATION
ROADSIDE PARK-PICNIC GROUND
PLAYGROUND, BALL FIELD, ETC.
BATHING BEACH OR SWIMMING POOL
SCENIC SITE-OVERLOOK
CAMP OR LODGE
SMALL PARK (SP-STATE) (CP-COUNTY)
FOREST BUNKER STATION
OBSERVATION OR LOOKOUT TOWER
PROMINENT PEAK AND LOOKOUT TOWER
FISH HATCHERY-BASIN
FISH HATCHERY-POND
GAME PRESERVE
GOLF COURSE OR COUNTRY CLUB
YACHT CLUB OR MARINA
AMUSEMENT PARK OR HALL
FAIRGROUND, RACE TRACK OR SPEEDWAY
DRIVE-IN THEATRE
HISTORIC SITE OR RuIN
COVERED BRIDGE
LIFE SAVING STATION
COAST GUARD STATION
RAILS TO TRAILS-BIKING,HIKING
HORSEBACK RIDING AND SIGHTING | INDUSTRIAL
INDUSTRIAL PARK
MINE, SHAFT OR DRIFT
MINE OPENING
OIL OR GAS WELL
STORAGE TANKS
PUMPING STATION-OIL OR GAS
GAUGING OR PUMPING STATION |
| CHURCHES, CEMETERIES, ETC.
CHURCH
CHURCH AND SCHOOL
CEMETERY
CHURCH AND CEMETERY
NURSING OR REST HOME
HOSPITAL | EDUCATIONAL AND CORRECTIONAL
SCHOOLHOUSE
OTHER EDUCATIONAL INSTITUTIONS
TOWN HALL OR COMMUNITY CENTER
AGRICULTURAL EXPERIMENT STATION
PRISON OR CORRECTIONAL INSTITUTION |
| MISCELLANEOUS
ARMOYRY
LUNDPILL
SCRAP METAL JUNKYARD
SEWAGE DISPOSAL PLANT
REST AREA OR MELODIE CENTER
TRIANGULATION STATION
OPS STATION
BM-OPS STATION
BM-TRIANGULATION-OPS STATION
BENCH MARK-WITH ELEVATION
DOT INDICATES ACTUAL LOCATION OF FEATURE WHERE SPACE IS NOT AVAILABLE | WILDLIFE MANAGEMENT AREA
Wildlife Management Area |

APPROVAL SIGNATURES

FHWA SIGNATURE	DATE
BUREAU CHIEF SIGNATURE	DATE
HFC / NHS SECTION SIGNATURE	DATE

LEGEND

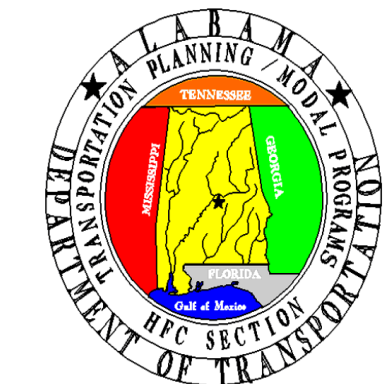
- Wildlife Management Area

Contact Information:

Don Griffin
Alabama Department of Transportation
Transportation Planning and Modal Programs
Special Studies Division
HFC / NHS Section
1409 Coliseum Blvd.
Montgomery, Alabama 36110
Phone: Office (334) 242-6426
Fax: (334) 353-3581
Email: griffind@dot.state.al.us
SouLinc: 1*99*839

LAUDERDALE COUNTY - 39

ALABAMA DEPARTMENT OF TRANSPORTATION
Highway Functional Classification
Transportation Planning / Modal Programs Bureau



FHWA APPROVAL DATE		DRAWN BY: D.H. GRIFFIN	
DATE: April 18, 2005		DATE DRAWN: NOVEMBER 13, 2008	
NAME	DATE	COMMENTS	