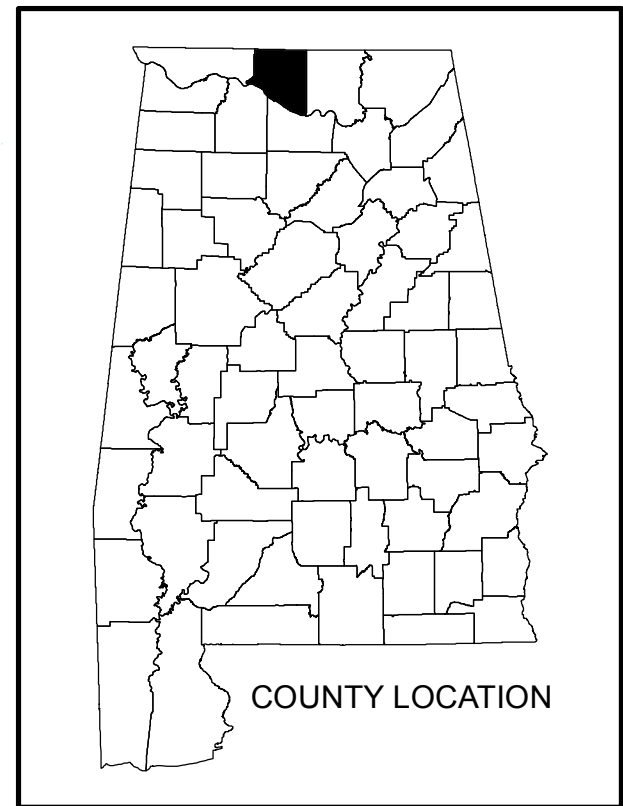
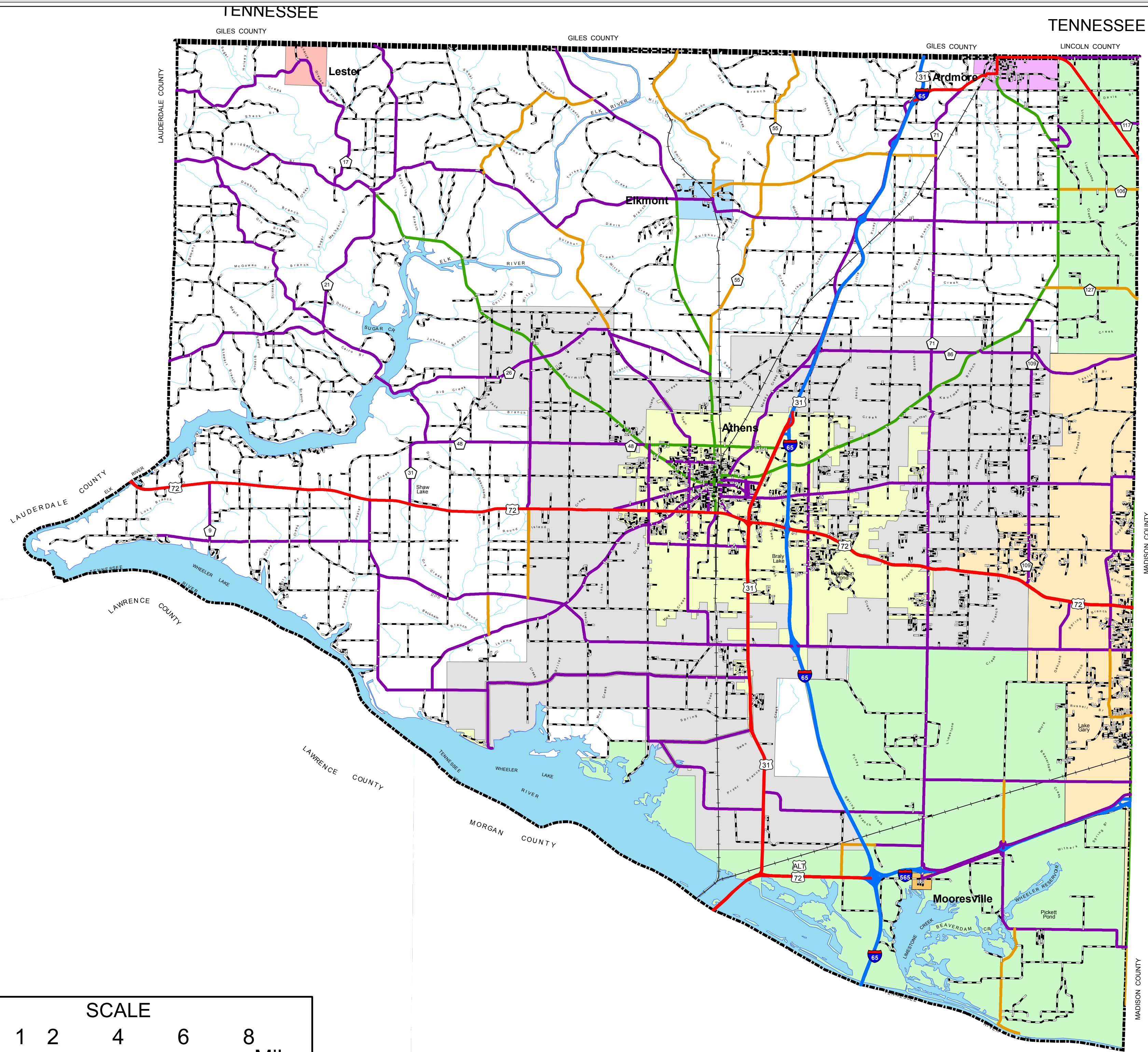
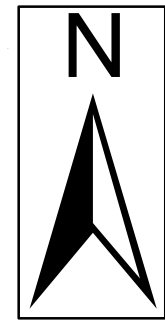
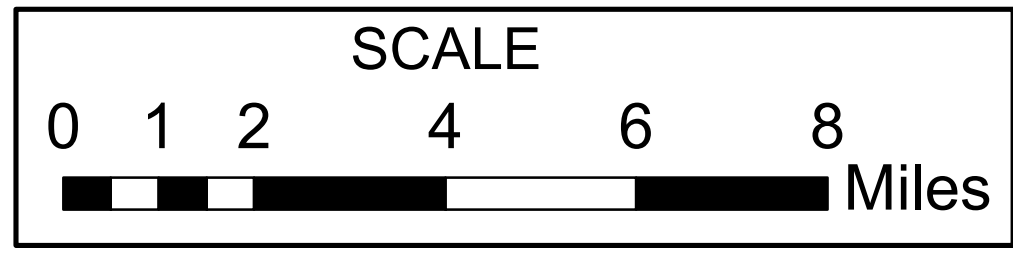


LIMESTONE COUNTY HIGHWAY FUNCTIONAL CLASSIFICATION SYSTEM



APPROVED SIGNATURES	
Federal Highway Administration	DATE
BUREAU CHIEF TRANSPORTATION PLANNING/MODAL PROGRAMS	DATE



CITY

 Ardmore
 Athens
 Elkmont
 Lester
 Mooresville



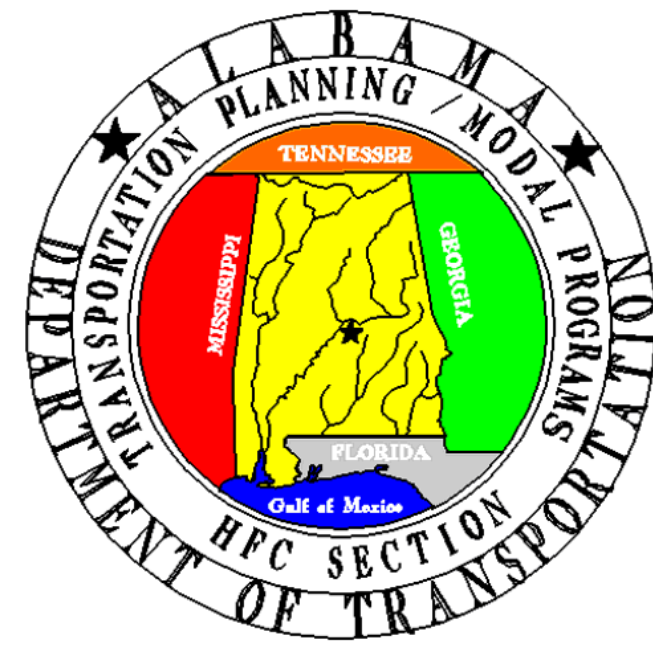
Federal Highway Administration
Alabama Division Office

REVISIONS		
NAME	DATE	COMMENTS
B. Whetstone	July 6, 2016	Reclassified service rds on the north side of I-565 from the junction of Mooresville Rd to the junction of County Line Rd from a Local Rd to a Major Collector.
B. Whetstone	July 6, 2016	Reclassified service rd on the south side of I-565 from the junction of Mooresville Rd to the junction of Greenbrier Rd from a Local Rd to a Major Collector.

Disclaimer of Liability
Due to the scale of this map neither the Alabama Department of Transportation (ALDOT) or the State of Alabama nor any employees and contractors thereof, make any warranty, expressed or implied, or assumes any legal liability, or responsibility, for the accuracy, completeness, or usefulness of any information contained on this map.

LIMESTONE COUNTY ALABAMA DEPARTMENT OF TRANSPORTATION HIGHWAY FUNCTIONAL CLASSIFICATION TRANSPORTATION PLANNING AND MODAL PROGRAMS BUREAU

FHWA APPROVAL DATE
DATE **September 20, 2016**



LEGEND
Highway Functional Classification

— 1 Interstate	Railroad
— 2 Principal Arterial-Other Freeways and Expressways	INTERSTATE
— 3 Principal Arterial-Other	US ROUTES
— 4 Minor Arterial	STATE ROUTES
— 5 Major Collector	COUNTY ROADS
— 6 Minor Collector	County Boundary
— 7 Local Road	
Proposed Road	
Open Water	
Streams / Creeks	
Swamp / Marsh	
Large Urban Area	
Large Urban Study Area	
Small Urban Area	
County Boundary	