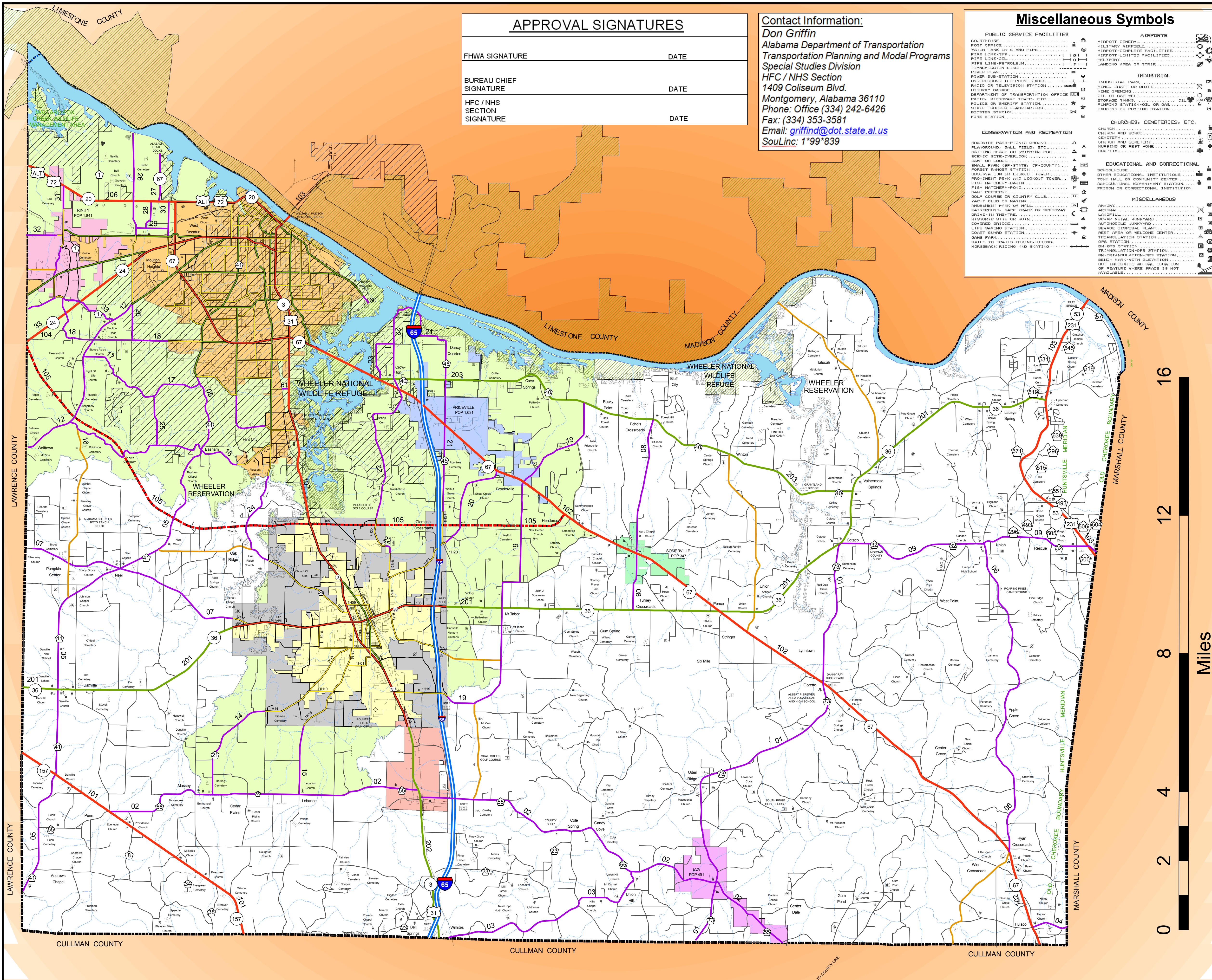


# MORGAN COUNTY HIGHWAY FUNCTIONAL CLASSIFICATION SYSTEM



APPROVAL SIGNATURES	
FHWA SIGNATURE	DATE
BUREAU CHIEF SIGNATURE	DATE
HFC / NHS SECTION SIGNATURE	DATE

**Contact Information:**  
**Don Griffin**  
 Alabama Department of Transportation  
 Transportation Planning and Modal Programs  
 Special Studies Division  
 HFC / NHS Section  
 1409 Coliseum Blvd.  
 Montgomery, Alabama 36110  
 Phone: Office (334) 242-6426  
 Fax: (334) 353-3581  
 Email: [griffind@dot.state.al.us](mailto:griffind@dot.state.al.us)  
 SouLinc: 1\*99\*839

Miscellaneous Symbols	
<b>PUBLIC SERVICE FACILITIES</b>	<b>AIRPORTS</b>
<b>CONSERVATION AND RECREATION</b>	<b>INDUSTRIAL</b>
<b>EDUCATIONAL AND CORRECTIONAL</b>	<b>MISCELLANEOUS</b>

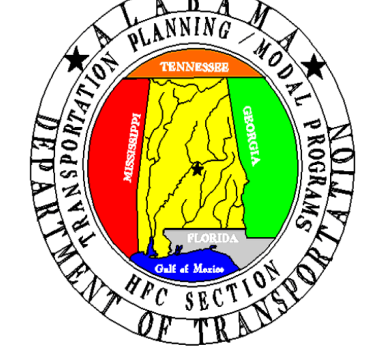
Legend	
<b>Functional Classification</b>	<b>Proposed Functional Class</b>
<b>Miscellaneous Items</b>	<b>Morgan County Cities</b>

MAP SCALE  
 SEE SCALE ON MAP

**Disclaimer of Liability**  
 Due to the scale of this map neither the Alabama Department of Transportation (ALDOT) or the State of Alabama nor any employees and contractors thereof, make any warranty, expressed or implied, or assumes any legal liability, or responsibility, for the accuracy, completeness, or usefulness of any information contained on this map.

## MORGAN COUNTY -52

ALABAMA DEPARTMENT OF TRANSPORTATION  
 Highway Functional Classification  
 Transportation Planning / Modal Programs Bureau



FHWA APPROVAL DATE		DRAWN BY: D.H. GRIFFIN	
DATE: November 23, 2004		DATE DRAWN: NOVEMBER 6, 2008	
NAME	DATE	COMMENTS	