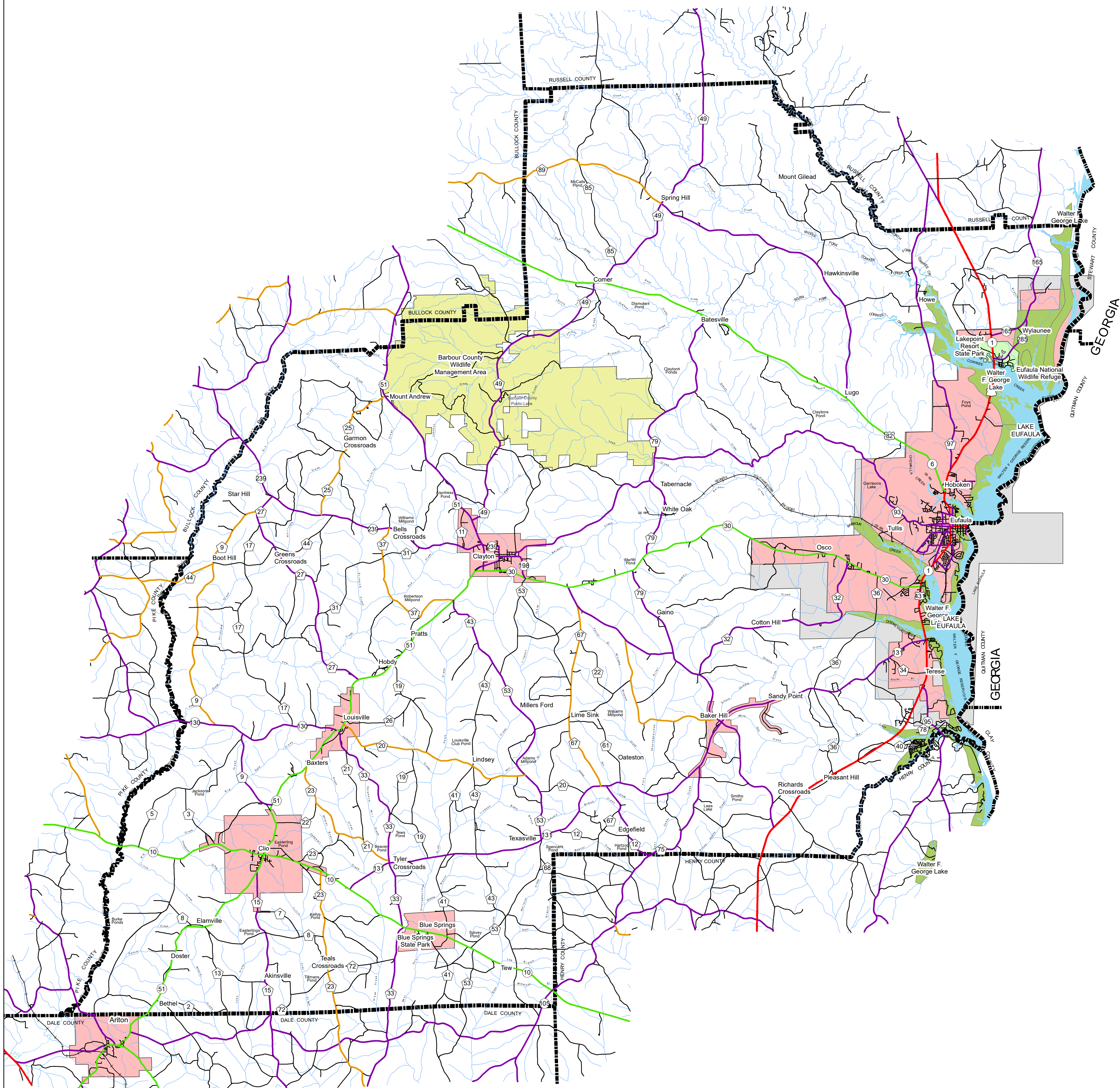
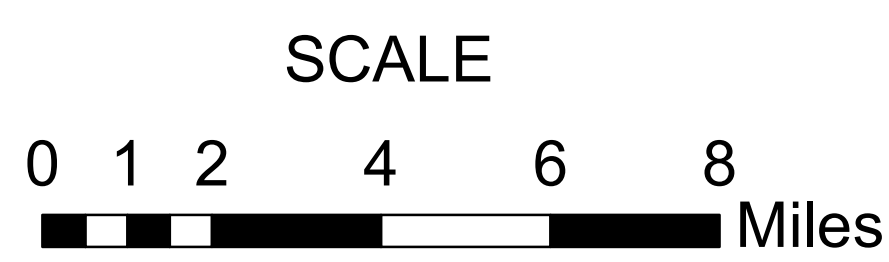


BARBOUR COUNTY HIGHWAY FUNCTIONAL CLASSIFICATION SYSTEM



APPROVED SIGNATURES	
Federal Highway Administration	DATE
Bureau Chief Maintenance	DATE



LEGEND

Highway Functional Classification

- 1 Interstate
- 2 Principal Arterial-Other Freeways and Expressways
- 3 Principal Arterial-Other
- 4 Minor Arterial
- 5 Major Collector
- 6 Minor Collector
- 7 Local Road
- Proposed Road
- Open Water
- Streams / Creeks
- Wildlife Management Area
- Large Urban Area
- Large Urban Study Area
- Small Urban Area
- State Parks
- County Boundary

Other Symbols:

- Railroad
- INTERSTATE
- U.S.
- STATE
- COUNTY
- City Limit
- Federal Lands

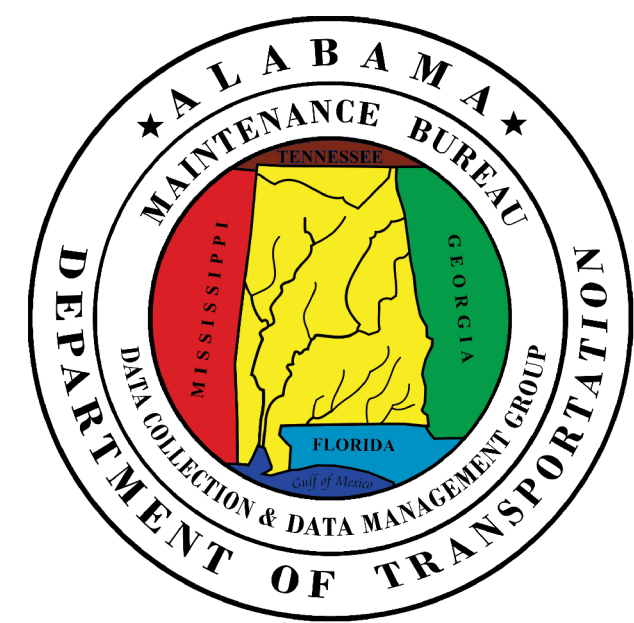
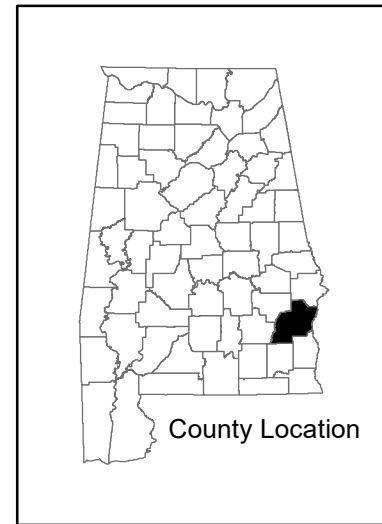
Barbour County
ALABAMA DEPARTMENT OF TRANSPORTATION
 Highway Functional Classification

REVISIONS

DATE	COMMENTS
July, 2021	Added New Border and Legend

Disclaimer of Liability:
 Due to the scale of this map neither the Alabama Department of Transportation (ALDOT) or the State of Alabama nor any employee and contractor thereof make any warranty, expressed or implied, or assume any legal liability or responsibility for the accuracy, completeness, or usefulness of any information contained on this map.

FHWA APPROVAL DATE
 DATE: July, 2021



Federal Highway Administration
 Alabama Division Office