

LEE COUNTY HIGHWAY FUNCTIONAL CLASSIFICATION SYSTEM

APPROVAL SIGNATURES

FHWA SIGNATURE	DATE
BUREAU CHIEF SIGNATURE	DATE
HFC / NHS SECTION SIGNATURE	DATE

Legend

Functional Classification

- Urban Interstate - 11
- Freeway - 12
- Urban Principal Arterial - 14
- Urban Minor Arterial - 16
- Collector - 17
- Rural Interstate - 1
- Rural Principal Arterial - 2
- Rural Minor Arterial - 6
- Rural Major Collector - 7
- Miscellaneous Collector - 8

Proposed Functional Class

- Urban Interstate - 11
- Freeway - 12
- Urban Principal Arterial - 14
- Urban Minor Arterial - 16
- Collector - 17
- Rural Interstate - 1
- Rural Principal Arterial - 2
- Rural Minor Arterial - 6
- Rural Major Collector - 7
- Rural Minor Collector - 8

Miscellaneous Items

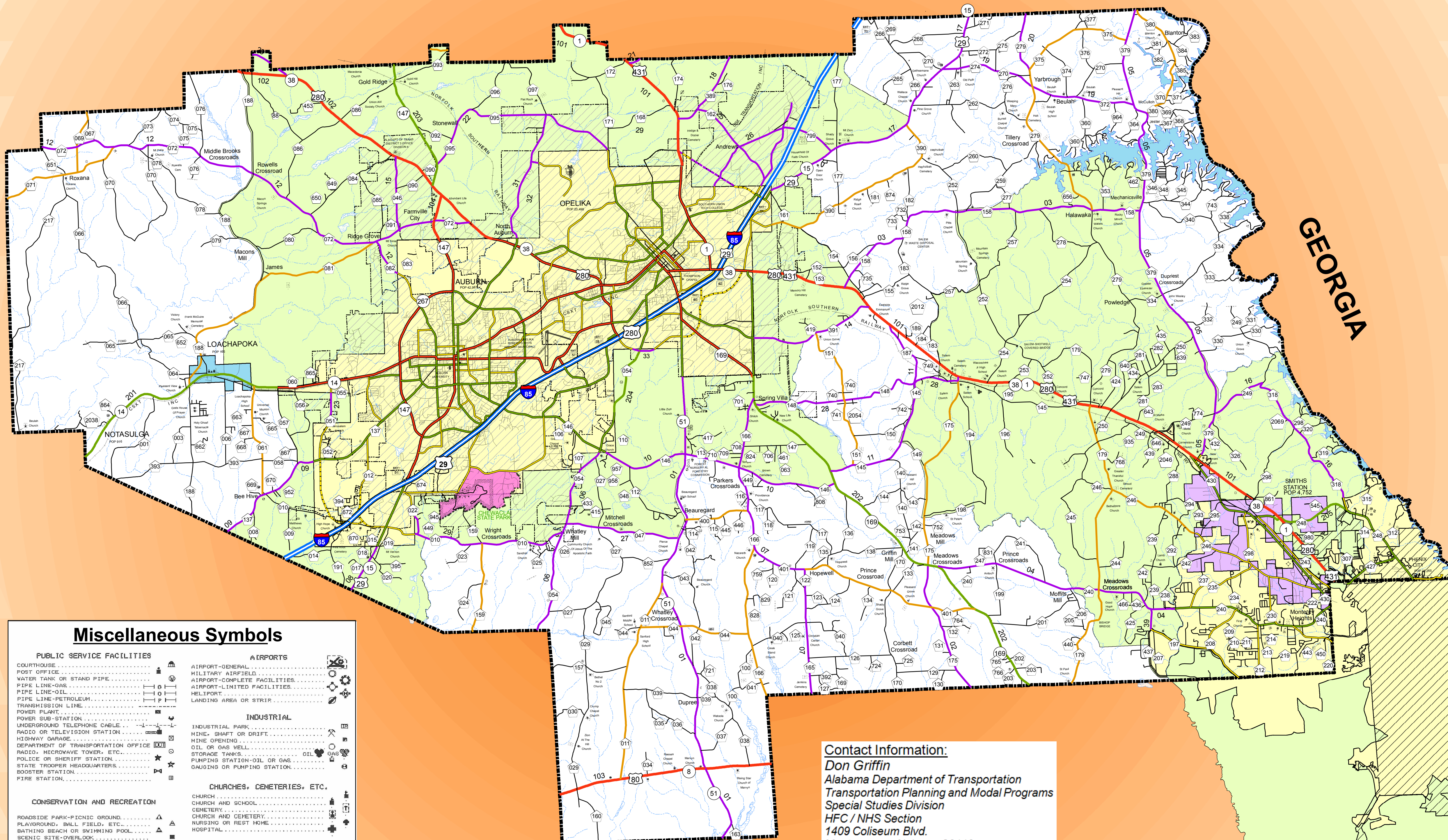
- GIS.OpenWater_ALDOTDivisions
- GIS.NHD_by_County
- GIS_Swamp_Marsh_HR_NHDWB_County
- TRANSDATA.urban_large
- TRANSDATA.urban_large_study
- TRANSDATA.urban_small
- GIS.County
- INTERSTATE
- US ROUTES
- STATE ROUTES
- COUNTY ROADS
- FOREST ROADS

Legend

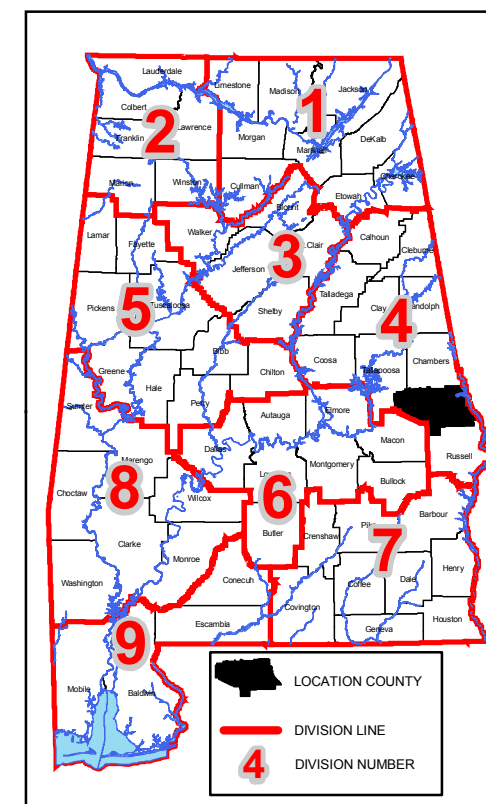
Lee County Cities

- Auburn
- Loachapoka
- Opelika
- Smiths Station

MAP SCALE
SEE SCALE ON MAP



GEORGIA



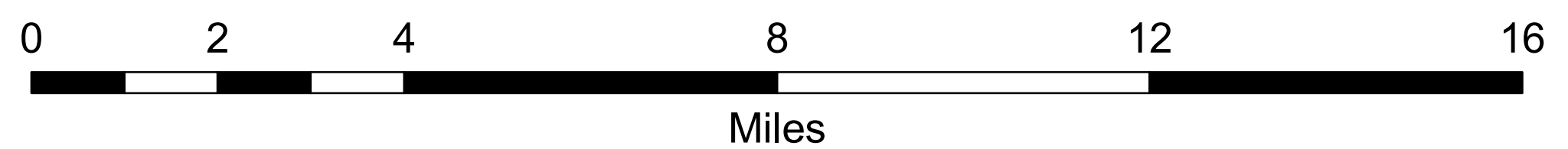
Disclaimer of Liability

Due to the scale of this map neither the Alabama Department of Transportation (ALDOT) or the State of Alabama nor any employees and contractors thereof, make any warranty, expressed or implied, or assumes any legal liability, or responsibility, for the accuracy, completeness, or usefulness of any information contained on this map.

Miscellaneous Symbols

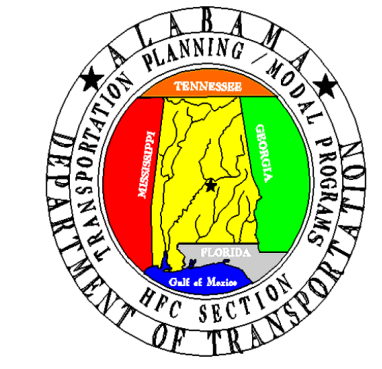
PUBLIC SERVICE FACILITIES		AIRPORTS		
COURTHOUSE	PORT OFFICE	AIRPORT-GENERAL	MILITARY AIRFIELD	
WATER TANK OR STAND PIPE	PIPE LINE-GAS	AIRPORT-COMLETE FACILITIES	AIRPORT-LIMITED FACILITIES	
PIPE LINE-OIL	PIPE LINE-PETROLEUM	HELIPORT	LANDING AREA OR STRIP	
TRANSMISSION LINE	POWER PLANT	INDUSTRIAL		
POWER SUB-STATION	UNDERGROUND TELEPHONE CABLE	INDUSTRIAL PARK	MINE-SHAFT OR DRIFT	
RADIO OR TELEVISION STATION	HIGHWAY GARAGE	STORAGE TANKS	OIL OR GAS WELL	
DEPARTMENT OF TRANSPORTATION OFFICE	RADIO, MICROWAVE TOWER, ETC.	PUMPING STATION-OIL OR GAS	GAUGING OR PUMPING STATION	
POLICE OR SHERIFF STATION	STATE TROOPER HEADQUARTERS	CHURCHES, CEMETERIES, ETC.		
BOOSTER STATION	FIRE STATION	CHURCH	CHURCH AND SCHOOL	
CONSERVATION AND RECREATION		CEMETERY	CEMETERY AND CEMETERY CENTER	
ROADSIDE PARK-PICNIC GROUND	PLAYGROUND, BALL FIELD, ETC.	NURSING OR REST HOME	HOSPITAL	
BATHING BEACH OR SWIMMING POOL	SCENIC SITE-OVERLOOK	EDUCATIONAL AND CORRECTIONAL		
CAMP OR LODGE	FISH HATCHERY-BASIN	SCHOOLHOUSE	OTHER EDUCATIONAL INSTITUTIONS	
FISH HATCHERY-POND	GAME PRESERVE	TOWN HALL OR COMMUNITY CENTER	AGRICULTURAL EXPERIMENT STATION	
YACHT CLUB OR MARINA	AMUSEMENT PARK OR HALL	PRISON OR CORRECTIONAL INSTITUTION	MISCELLANEOUS	
PAIRGROUND, RACE TRACK OR SPEEDWAY	DRIVE-IN THEATRE	ARMORY		
LIFE SAVING STATION	COAST GUARD STATION	ARSENAL	LANDFILL	
DAKE PARK	RAILS TO TRAILS-BIKING/HEIKING	SCRAP METAL	SCRAP METAL	
HORSEBACK RIDING AND SKATING		AUTOMOBILE JUNKYARD	SEWAGE DISPOSAL PLANT	
		REST AREA OR WELCOME CENTER	REST AREA OR WELCOME CENTER	
		TRANSMISSION STATION	TRANSMISSION STATION	
		OPS STATION	OPS STATION	
		BI-OPS STATION	BI-OPS STATION	
		BI-TRANSMISSION-OPS STATION	BI-TRANSMISSION-OPS STATION	
		BENCH MARK-WITH ELEVATION	BENCH MARK-WITH ELEVATION	
		DOT INDICATES ACTUAL LOCATION OF FEATURE WHERE SPACE IS NOT AVAILABLE	DOT INDICATES ACTUAL LOCATION OF FEATURE WHERE SPACE IS NOT AVAILABLE	

Contact Information:
Don Griffin
 Alabama Department of Transportation
 Transportation Planning and Modal Programs
 Special Studies Division
 HFC / NHS Section
 1409 Coliseum Blvd.
 Montgomery, Alabama 36110
 Phone: Office (334) 242-6426
 Fax: (334) 353-3581
 Email: griffind@dot.state.al.us
 SouLinc: 1*99*839



LEE COUNTY - 41

ALABAMA DEPARTMENT OF TRANSPORTATION
 Highway Functional Classification
 Transportation Planning / Modal Programs Bureau



FHWA APPROVAL DATE		DRAWN BY: D.H. GRIFFIN	
DATE: November 23, 2004		DATE DRAWN: NOVEMBER 13, 2008	
NAME	DATE	COMMENTS	