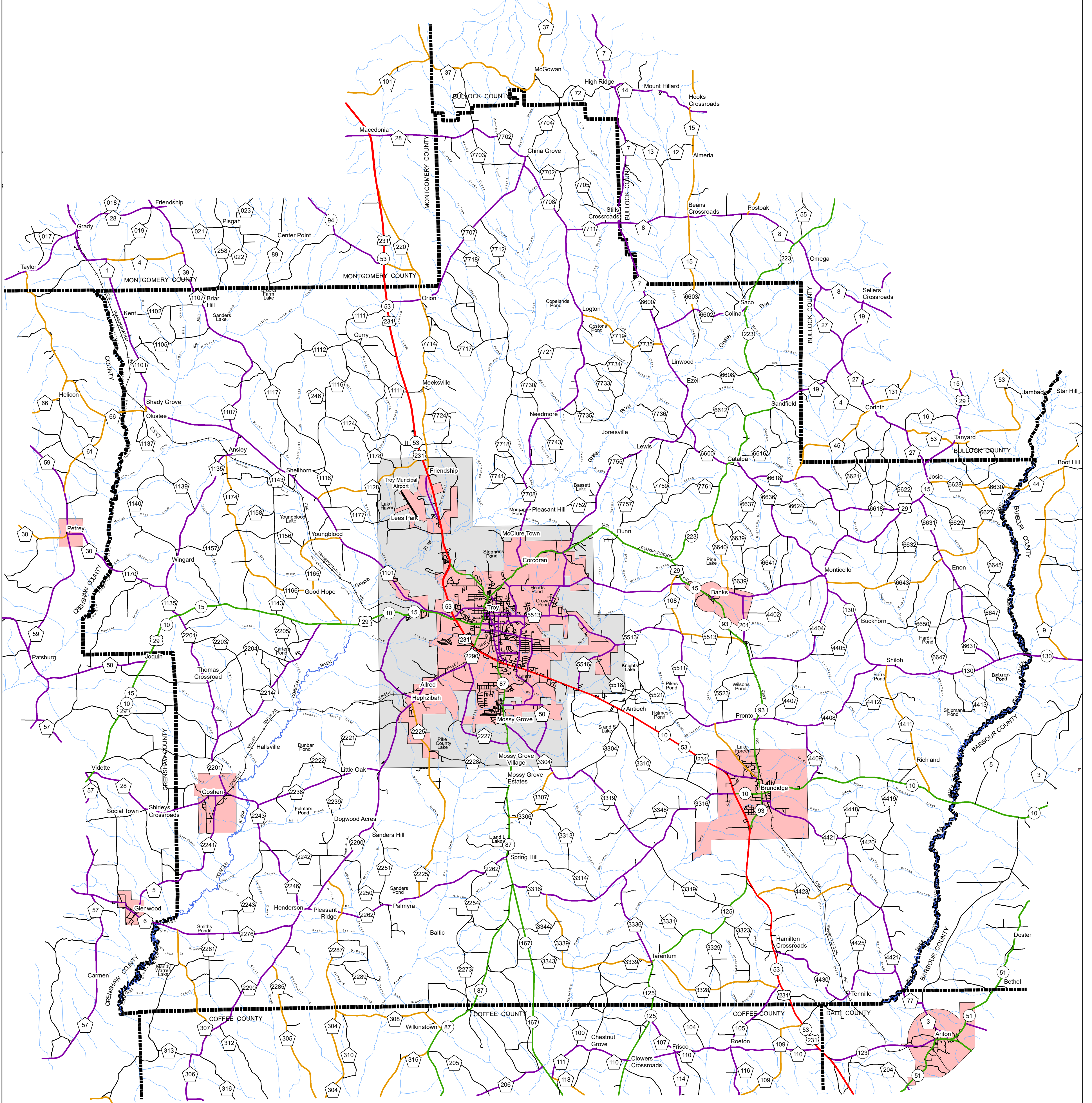
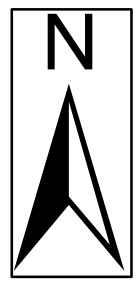
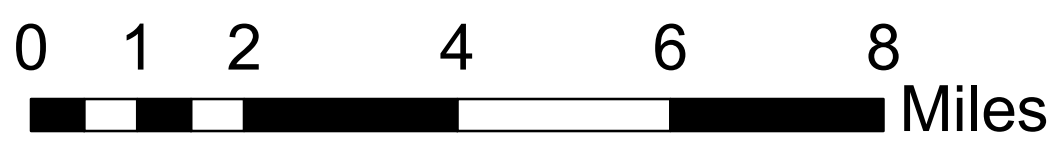


# PIKE COUNTY HIGHWAY FUNCTIONAL CLASSIFICATION SYSTEM



SCALE



APPROVED SIGNATURES	
Federal Highway Administration	DATE
Bureau Chief Maintenance	DATE

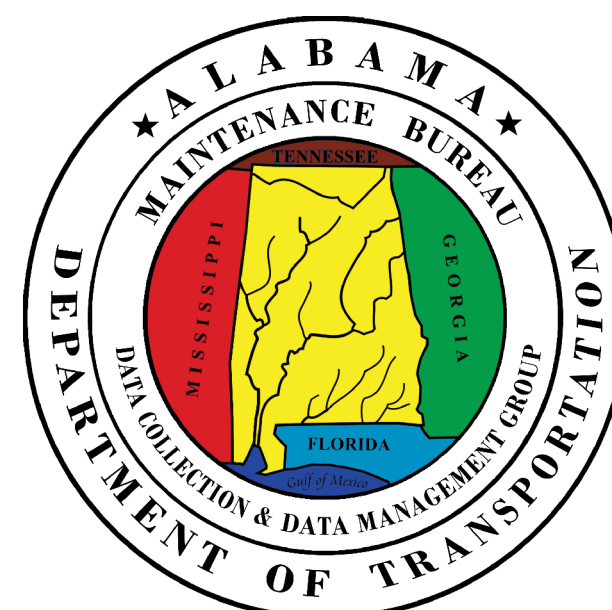
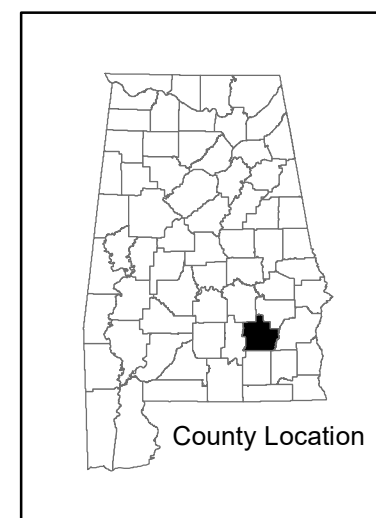
## PIKE COUNTY ALABAMA DEPARTMENT OF TRANSPORTATION Highway Functional Classification

REVISIONS

DATE	COMMENTS
November, 2021	Added New Border and Legend
December, 2022	Reclassified Veterans Boulevard from a Local rd to a Major Collector

*Disclaimer of Liability*  
Due to the scale of this map neither the Alabama Department of Transportation (ALDOT) or the State of Alabama nor any employee and contractor thereof make any warranty, expressed or implied, or assume any legal liability or responsibility for the accuracy, completeness, or usefulness of any information contained on this map.

FHWA APPROVAL DATE  
DATE: February 2023



### LEGEND

- Highway Functional Classification**
- 1 Interstate
  - 2 Principal Arterial-Other Freeways and Expressways
  - 3 Principal Arterial- Other
  - 4 Minor Arterial
  - 5 Major Collector
  - 6 Minor Collector
  - 7 Local Road
  - Proposed Road
  - OpenWater
  - Large Urban Area
  - Large Urban Study Area
  - Small Urban Area
  - Federal Lands
  - County Boundary
- Railroad  
 INTERSTATE  
 U.S.  
 STATE  
 COUNTY  
 City Limit



Federal Highway Administration  
Alabama Division Office