

A B C D E F G H I

1

1

2

2

3

3

4

4

5

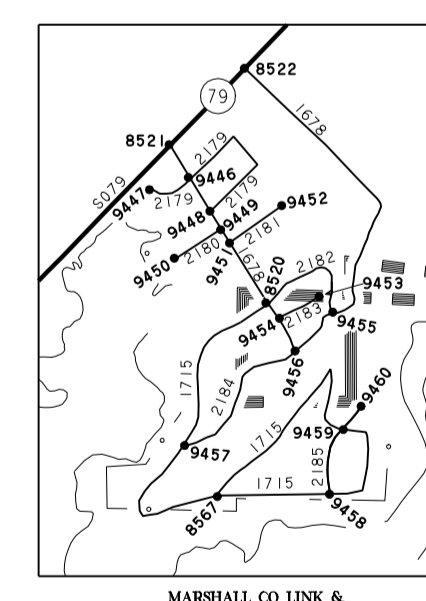
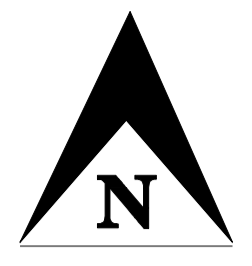
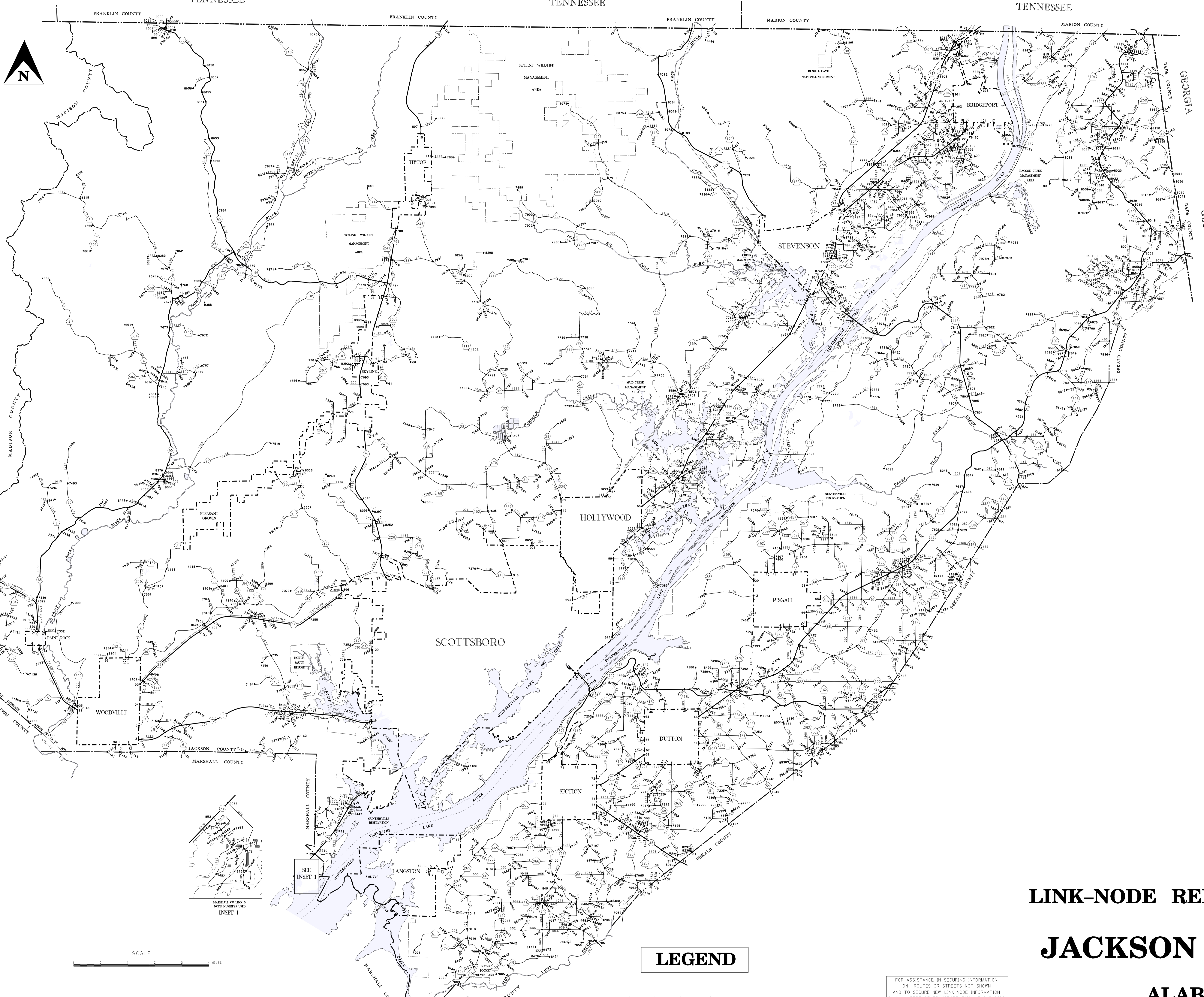
5

6

6

7

7



SCALE
0 1 2 MILES

REVISIONS

FEATURE	DATE
MAP UP TO DATE	2013

LEGEND

- Node Symbol •
- Link Number 1686
- Node Number 8565
- Railroad
- County Limits
- Corporate Limits
- City Streets
- County Link Route
- State and U.S. Link Route

FOR ASSISTANCE IN SECURING INFORMATION ON ROUTES OR STREETS NOT SHOWN AND TO SECURE NEW LINK-NODE INFORMATION CALL AL. DEPT. OF TRANSPORTATION AT 242-6420 OR FAX REQUIREMENTS AT 242-6403 OR 269-0827

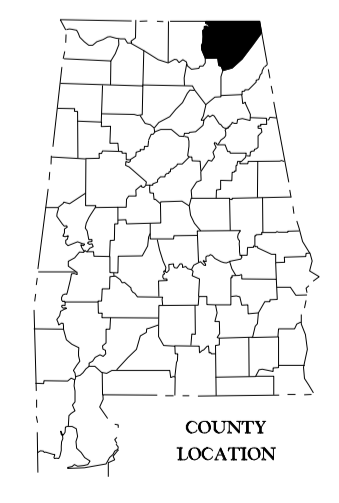
CITY BOUNDARIES ARE PLOTTED USING ALL AVAILABLE DESCRIPTIONS AT DATE OF REVISION. THE DEPARTMENT OF TRANSPORTATION CANNOT ACCEPT RESPONSIBILITY FOR INACCURACIES RESULTING FROM UNOBTAINABLE OR UNKNOWN DATA

THIS MAP HAS BEEN PREPARED FROM FEDERAL, STATE AND LOCAL SOURCES. THE ALABAMA DEPARTMENT OF TRANSPORTATION IS NOT RESPONSIBLE FOR INFORMATION OBTAINED FROM THESE SOURCES CERTAIN INFORMATION ON THIS MAP MAY HAVE BEEN CHANGED OR REVISED SINCE THIS MAP WAS COMPILED.

**LINK-NODE REFERENCE MAP
JACKSON COUNTY**

ALABAMA

PREPARED BY THE
ALABAMA DEPARTMENT OF TRANSPORTATION
BUREAU OF TRANSPORTATION PLANNING
SPECIAL STUDIES DIVISION
IN COOPERATION WITH THE
U.S. DEPARTMENT OF TRANSPORTATION
FEDERAL HIGHWAY ADMINISTRATION



COMPILED FROM DATA AS OF
OCTOBER 2000

A B C D E F G H I