

A

B

C

D

E

F

G

H

I

1

1

2

2

3

3

4

4

5

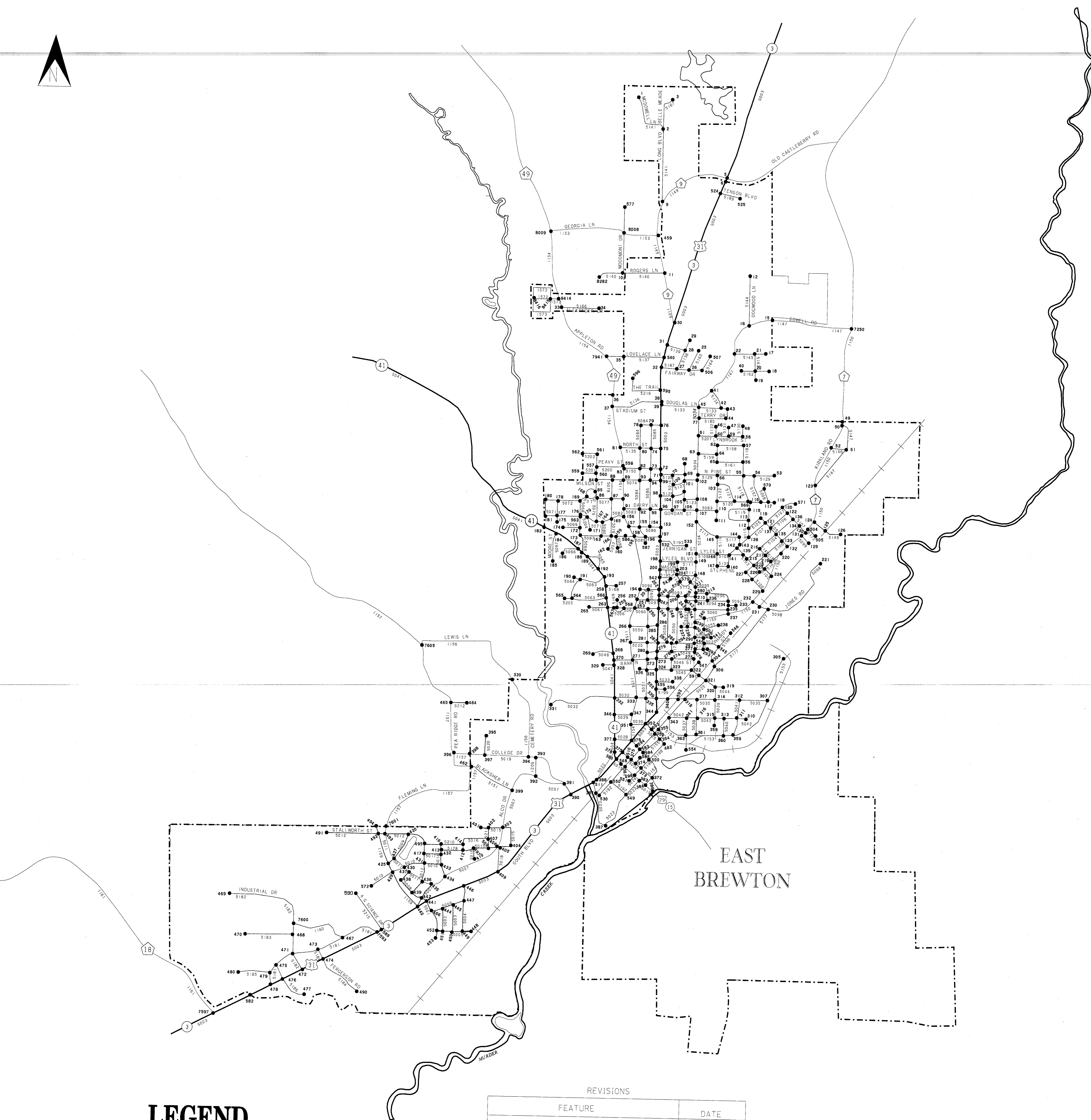
5

6

6

7

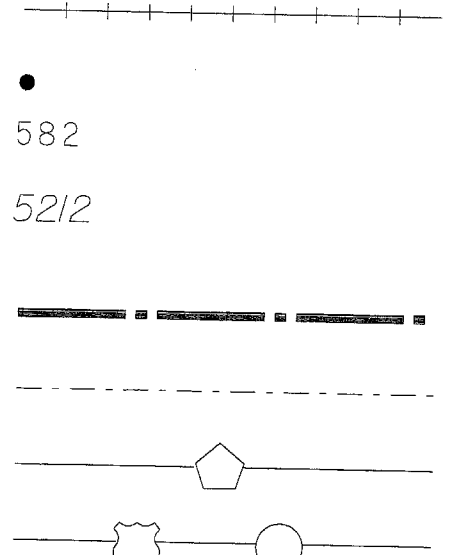
7



EAST
BREWTON

LEGEND

- Railroad
- Node Symbol
- Link Number
- Node Number
- County Limits
- Corporate Limits
- County Link Route
- U.S. and State Link Route



FOR ASSISTANCE IN SECURING INFORMATION ON ROUTES OR STREETS NOT SHOWN AND TO SECURE NEW LINK-NODE INFORMATION CALL: AL. DEPT. OF TRANSPORTATION AT 242-4400 OR FAX REQUESTS AT 242-4423 OR 242-4427

REVISIONS

| FEATURE | DATE |
|------------------------------------|----------|
| ADDED STREET NAMES | 8/6/01 |
| CORRECTED FLEMING RD & CITY LIMITS | 9/8/03 |
| ADDED NAME, HARDY ST TO LINK 5196 | 7/19/04 |
| ADDED LINK 5216 NODES 595 & 596 | 09/03/09 |
| | |
| | |

THIS MAP HAS BEEN PREPARED FROM FEDERAL, STATE, AND LOCAL SOURCES. THE ALABAMA DEPARTMENT OF TRANSPORTATION IS NOT RESPONSIBLE FOR THE INFORMATION OBTAINED FROM THESE SOURCES. CERTAIN INFORMATION ON THIS MAP MAY HAVE BEEN CHANGED OR REVISED SINCE THIS MAP WAS COMPILED.

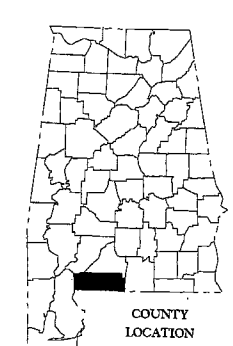


LINK-NODE REFERENCE MAP

BREWTON

ALABAMA

ALABAMA DEPARTMENT OF TRANSPORTATION
BUREAU OF TRANSPORTATION PLANNING & MODAL PROGRAMS
SPECIAL STUDIES DIVISION
IN COOPERATION WITH THE
U.S. DEPARTMENT OF TRANSPORTATION
FEDERAL HIGHWAY ADMINISTRATION



COMPILED FROM DATA AS OF
JUNE 1999

09208HD.DGN

A

B

C

D

E

F

G

H

I