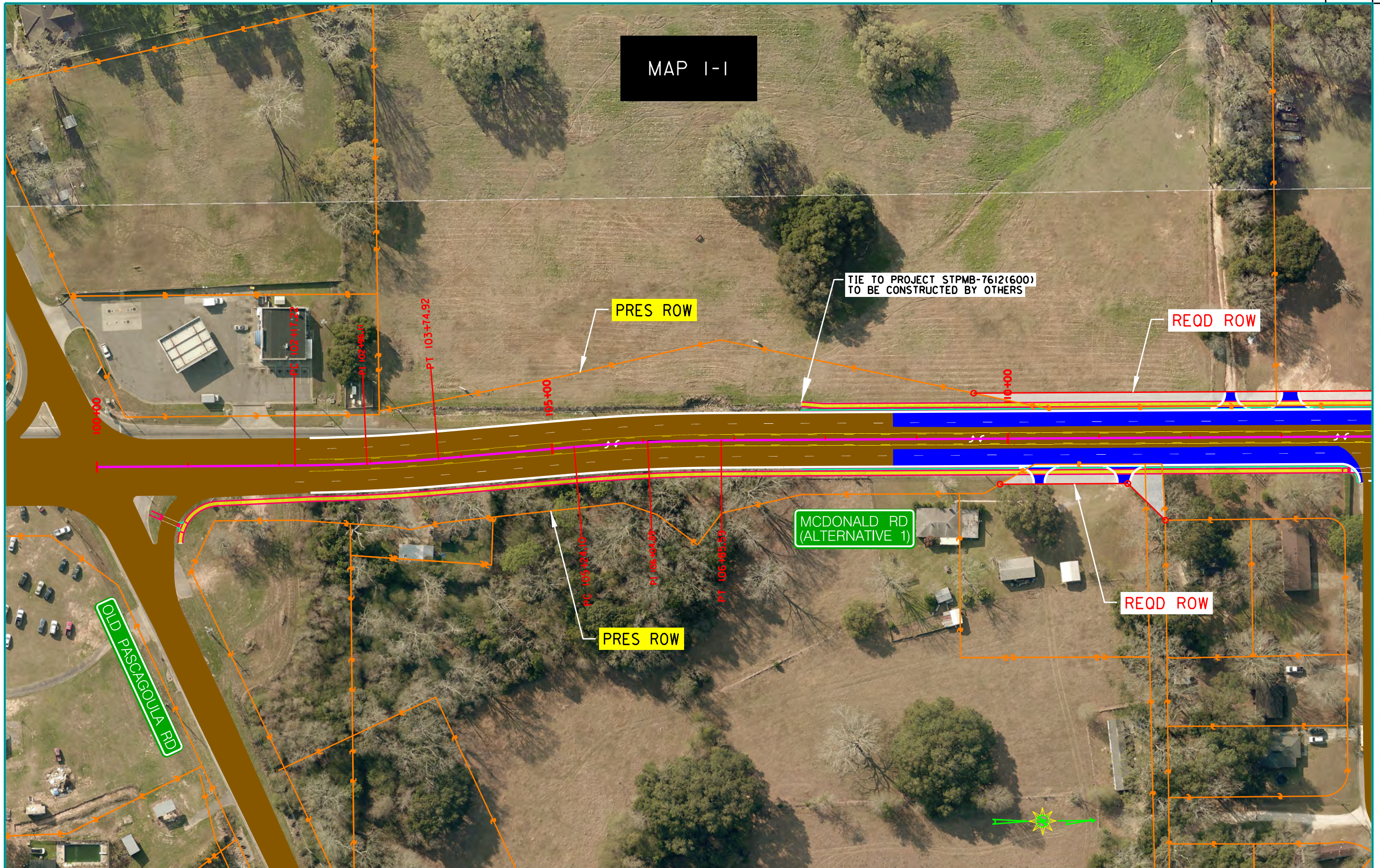


ALTERNATIVE 1 - (Preferred Alternative)



PLAN - ALTERNATIVE 1 (Preferred Alternative)

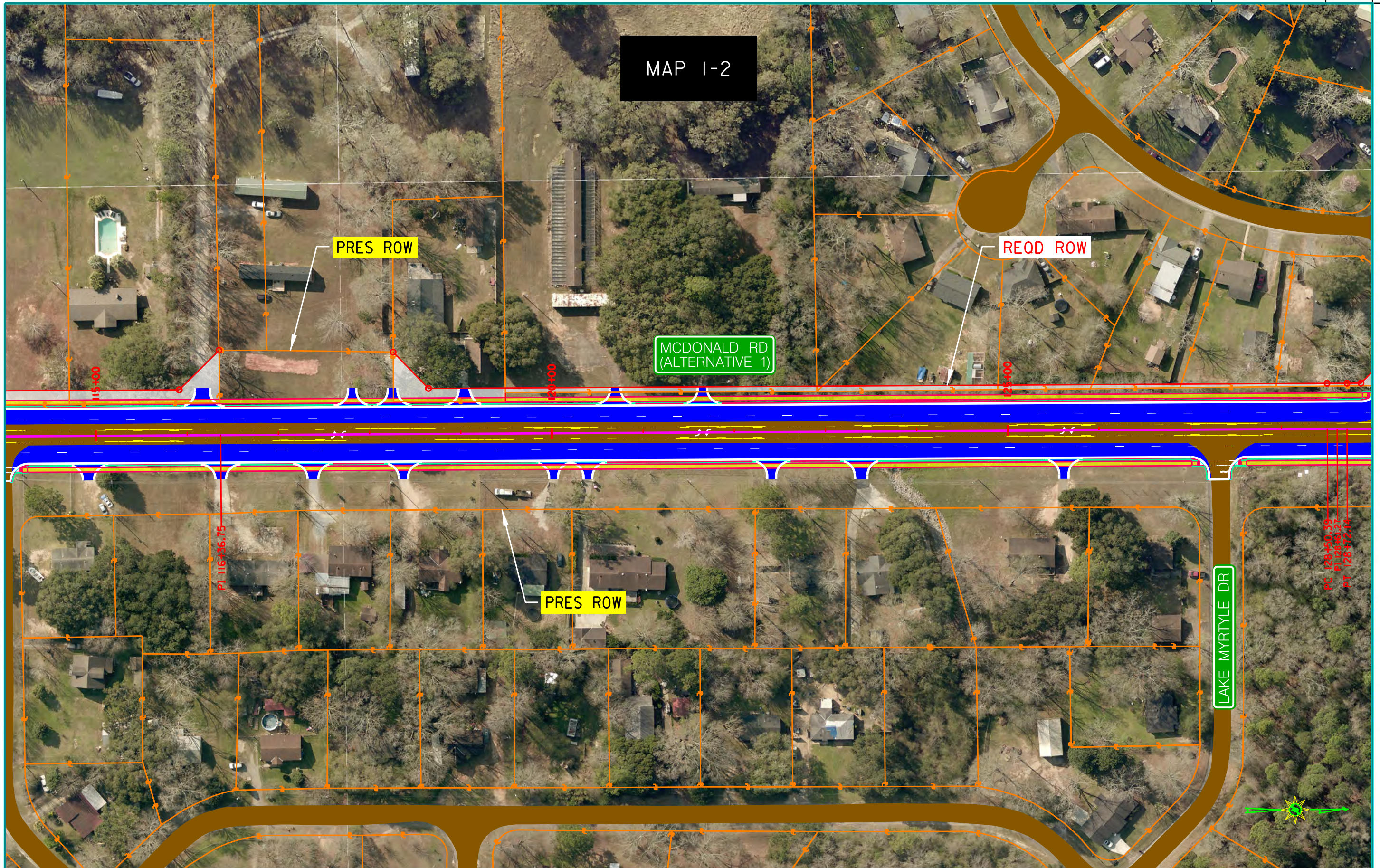
REFERENCE PROJECT NO	FISCAL YEAR	SHEET NO
MCR-2016-003	2022	



PLAN SUBMITTAL	MOBILE COUNTY COMMISSION MCDONALD ROAD FROM 0.1 MILE NORTH OF OLD PASCAGOULA ROAD TO THREE NOTCH - BRIDER ROAD	HORIZ SCALE (FEET) 50 0 50	SHEET TITLE PLAN ALTERNATIVE 1	ROUTE MCDONALD ROAD
----------------	-------------------------------------------------------------------------------------------------------------------	-------------------------------	-----------------------------------	------------------------

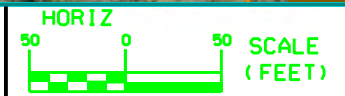
PLAN - ALTERNATIVE 1 (Preferred Alternative)

REFERENCE PROJECT NO	FISCAL YEAR	SHEET NO
MCR-2016-003	2022	



PLAN SUBMITTAL

MOBILE COUNTY COMMISSION
 MCFARLAND ROAD FROM 0.1 MILE NORTH
 OF OLD PASCAGOULA ROAD TO
 THREE NOTCH - BRONER ROAD

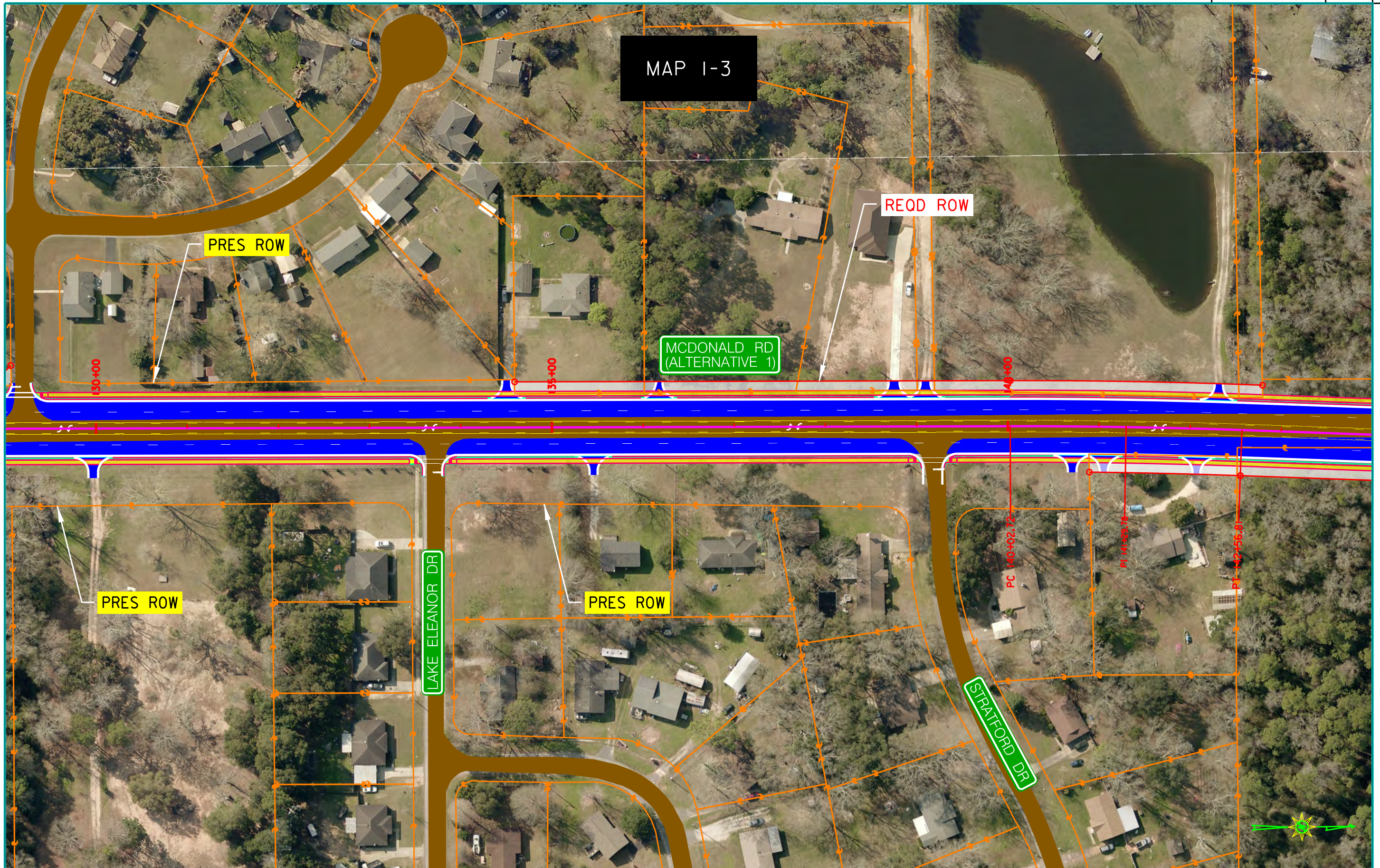


SHEET TITLE
 PLAN ALTERNATIVE 1

ROUTE
 MCDONALD ROAD

PLAN - ALTERNATIVE 1 (Preferred Alternative)

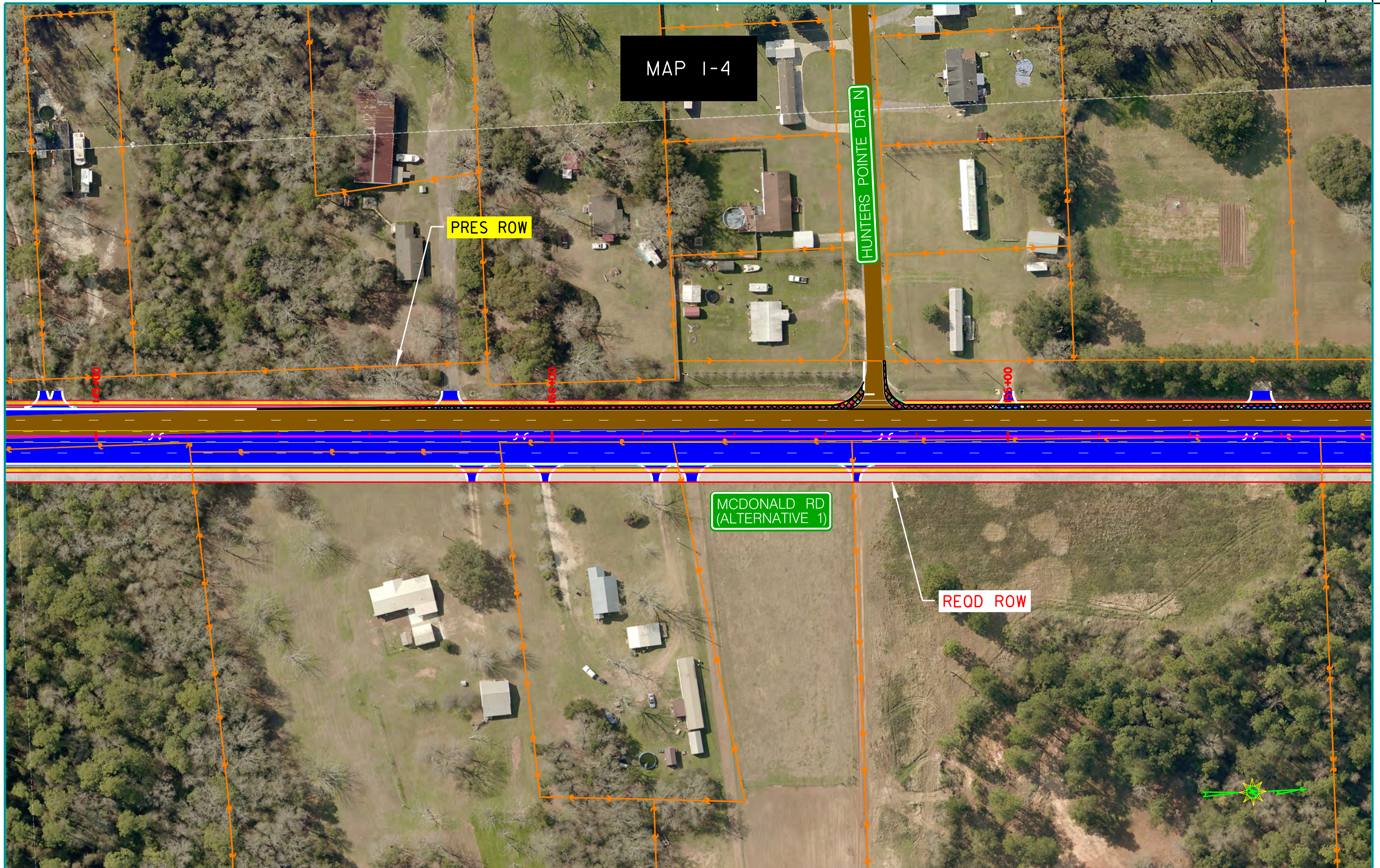
REFERENCE PROJECT NO	FISCAL YEAR	SHEET NO
MCR-2016-003	2022	



PLAN SUBMITTAL	MOBILE COUNTY COMMISSION MCFARLAND ROAD FROM 0.1 MILE NORTH OF OLD PASCAGOULA ROAD TO THREE NOTCH - BRONER ROAD	HORIZ 50 0 50 SCALE (FEET)	SHEET TITLE PLAN ALTERNATIVE 1	ROUTE MCDONALD ROAD
----------------	--------------------------------------------------------------------------------------------------------------------	-------------------------------	-----------------------------------	------------------------

PLAN - ALTERNATIVE 1 (Preferred Alternative)

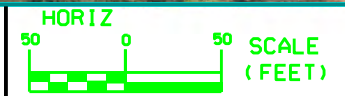
REFERENCE PROJECT NO	FISCAL YEAR	SHEET NO
MCR-2016-003	2022	



PLAN SUBMITTAL

MOBILE COUNTY COMMISSION

MCFAH AND ROAD FROM 0.1 MILE NORTH OF OLD PASCAGOULA ROAD TO THREE NOTCH - BRONER ROAD



SHEET TITLE

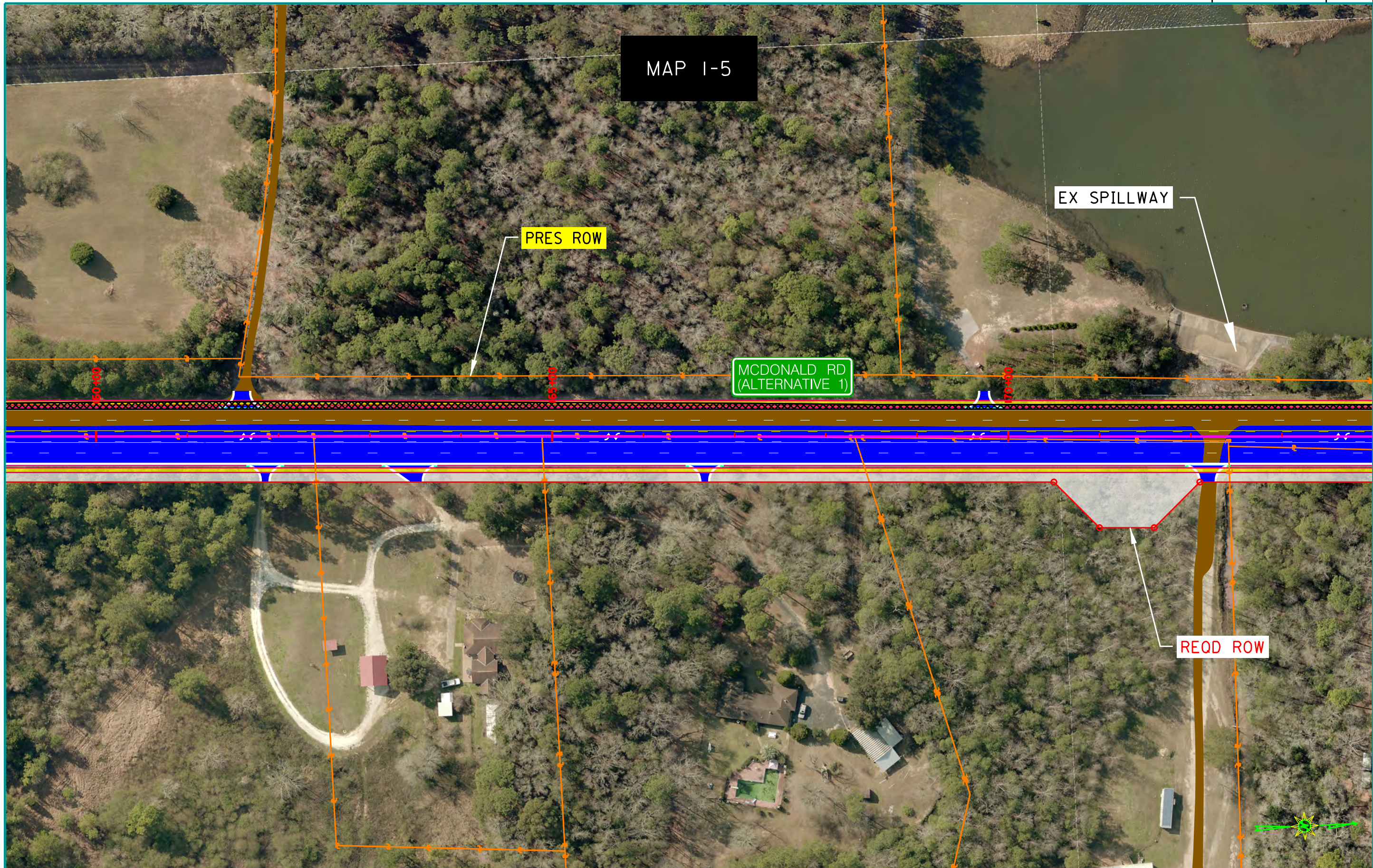
PLAN ALTERNATIVE 1

ROUTE

MCDONALD ROAD

PLAN - ALTERNATIVE 1 (Preferred Alternative)

REFERENCE PROJECT NO	FISCAL YEAR	SHEET NO
MCR-2016-003	2022	



PLAN SUBMITTAL	MOBILE COUNTY COMMISSION MCDONALD ROAD FROM 0.1 MILE NORTH OF OLD PASCAGOULA ROAD TO THREE NOTCH - BRONER ROAD	HORIZ SCALE (FEET) 50 0 50	SHEET TITLE PLAN ALTERNATIVE 1	ROUTE MCDONALD ROAD
----------------	-------------------------------------------------------------------------------------------------------------------	-------------------------------	-----------------------------------	------------------------

PLAN - ALTERNATIVE 1 (Preferred Alternative)

REFERENCE PROJECT NO	FISCAL YEAR	SHEET NO
MCR-2016-003	2022	



MAP I-6

PRES ROW

MCDONALD RD
(ALTERNATIVE 1)

REQD ROW

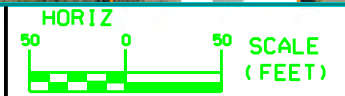
PC 175+37.46

PT 176+44.29

PT 177+51.11

PLAN SUBMITTAL

MOBILE COUNTY COMMISSION
 MCDONALD ROAD FROM 0.1 MILE NORTH
 OF OLD PASCAGOULA ROAD TO
 THREE NOTCH - BROWER ROAD



SHEET TITLE

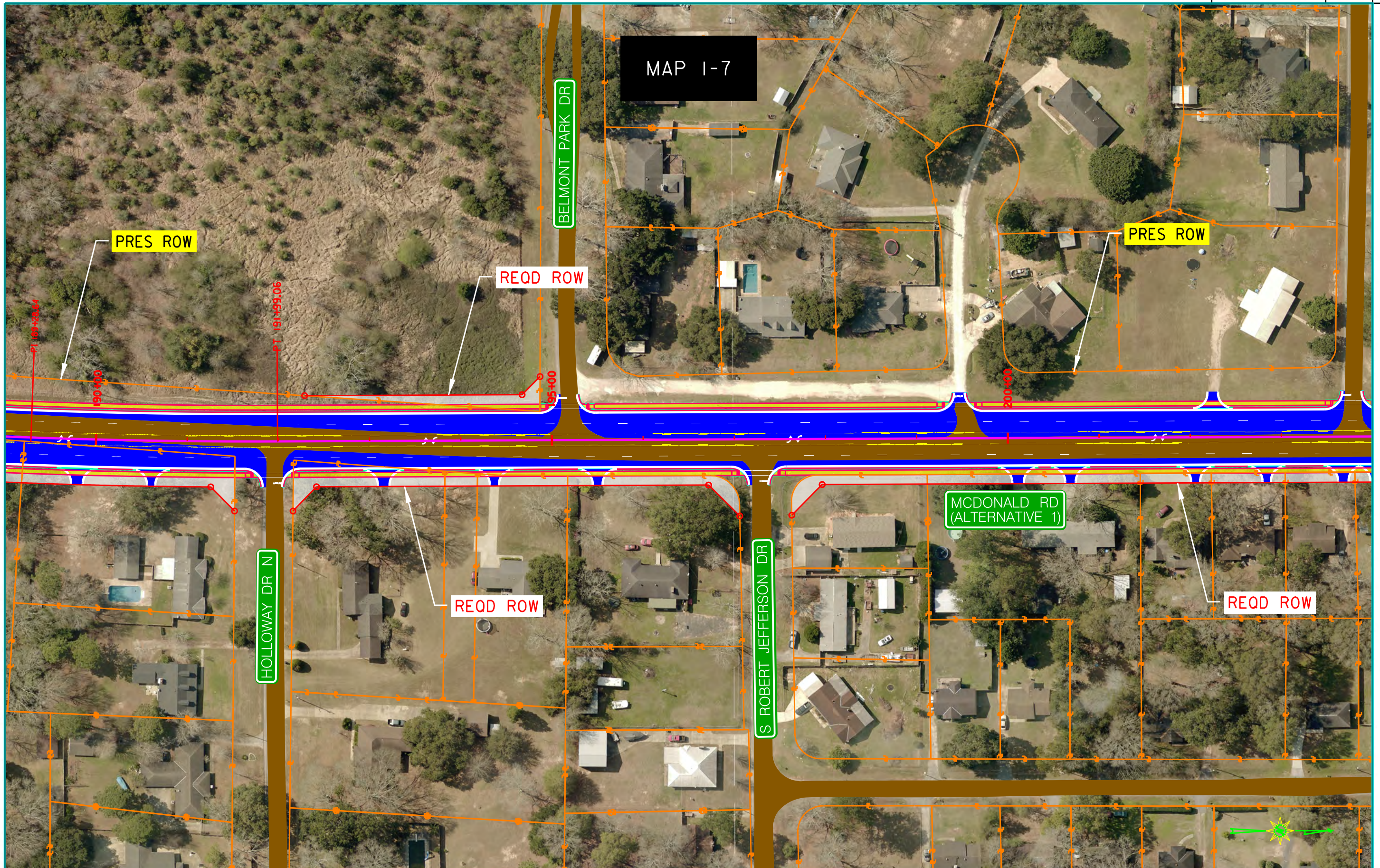
PLAN ALTERNATIVE 1

ROUTE

MCDONALD ROAD

PLAN - ALTERNATIVE 1 (Preferred Alternative)

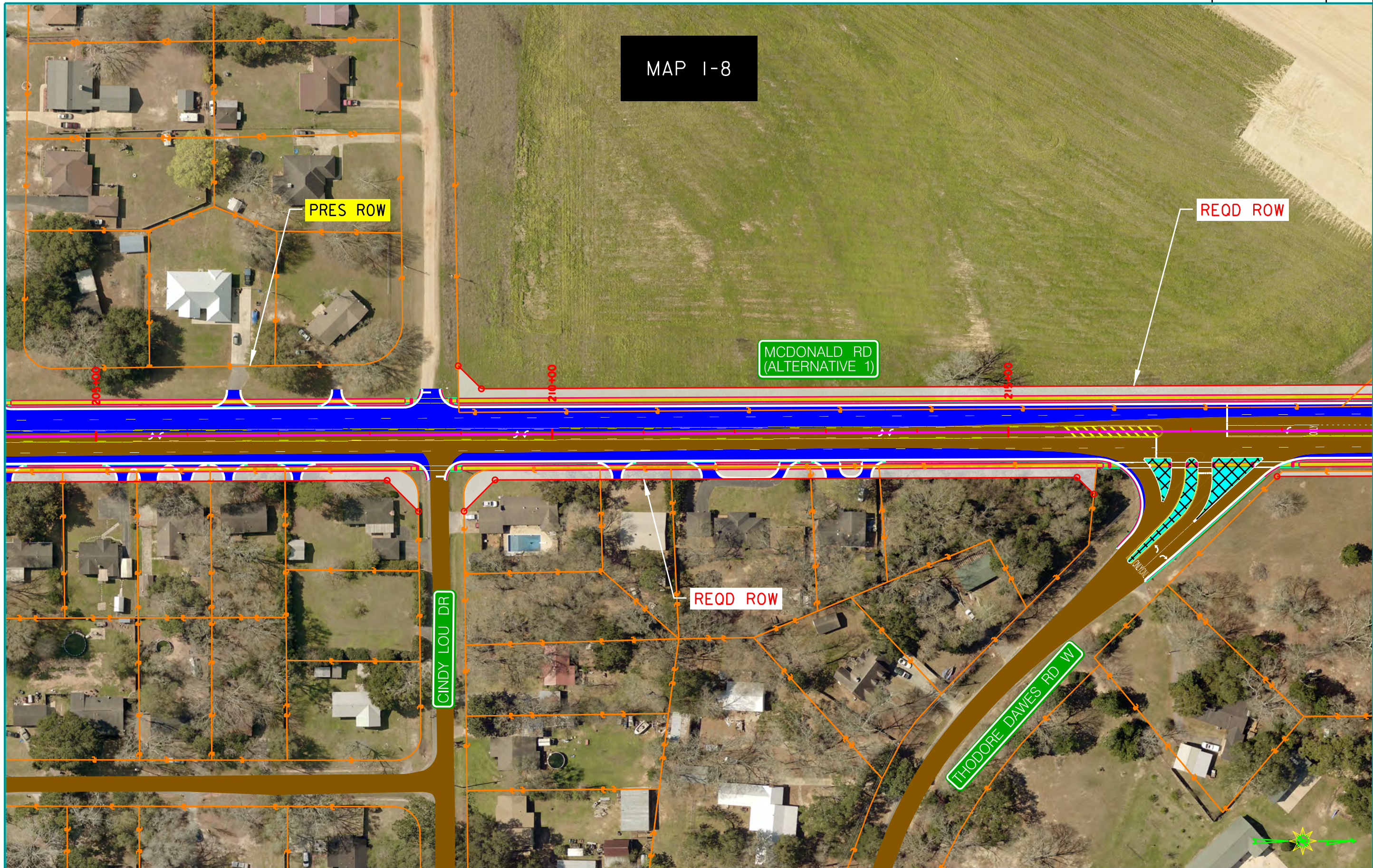
REFERENCE PROJECT NO	FISCAL YEAR	SHEET NO
MCR-2016-003	2022	



PLAN SUBMITTAL	MOBILE COUNTY COMMISSION MCDONALD ROAD FROM 0.1 MILE NORTH OF OLD PASCAGOULA ROAD TO THREE NOTCH - BRONER ROAD	HORIZ 50 0 50 SCALE (FEET)	SHEET TITLE PLAN ALTERNATIVE 1	ROUTE MCDONALD ROAD
----------------	-------------------------------------------------------------------------------------------------------------------	-------------------------------	-----------------------------------	------------------------

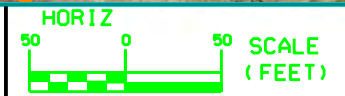
PLAN - ALTERNATIVE 1 (Preferred Alternative)

REFERENCE PROJECT NO	FISCAL YEAR	SHEET NO
MCR-2016-003	2022	



PLAN SUBMITTAL

MOBILE COUNTY COMMISSION
 McFARLAND ROAD FROM 0.1 MILE NORTH
 OF OLD PASCAGOULA ROAD TO
 THREE NOTCH - BRONER ROAD



SHEET TITLE
 PLAN ALTERNATIVE 1

ROUTE
 MCDONALD ROAD

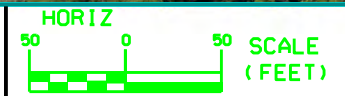
PLAN - ALTERNATIVE 1 (Preferred Alternative)

REFERENCE PROJECT NO	FISCAL YEAR	SHEET NO
MCR-2016-003	2022	



PLAN SUBMITTAL

MOBILE COUNTY COMMISSION
 MCFARLAND ROAD FROM 0.1 MILE NORTH
 OF OLD PASCAGOULA ROAD TO
 THREE NOTCH - BROWER ROAD

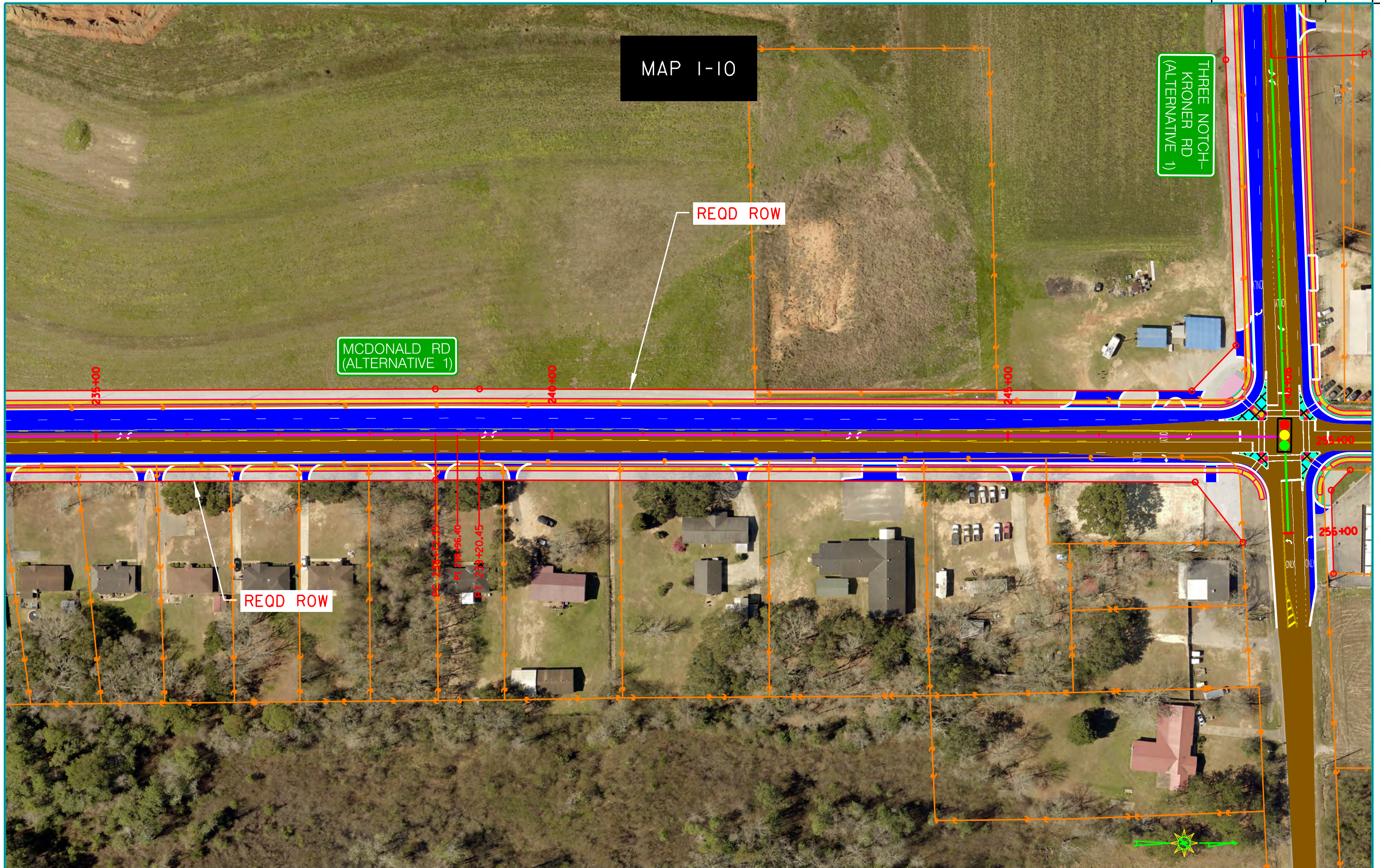


SHEET TITLE
 PLAN ALTERNATIVE 1

ROUTE
 MCDONALD ROAD

PLAN - ALTERNATIVE 1 (Preferred Alternative)

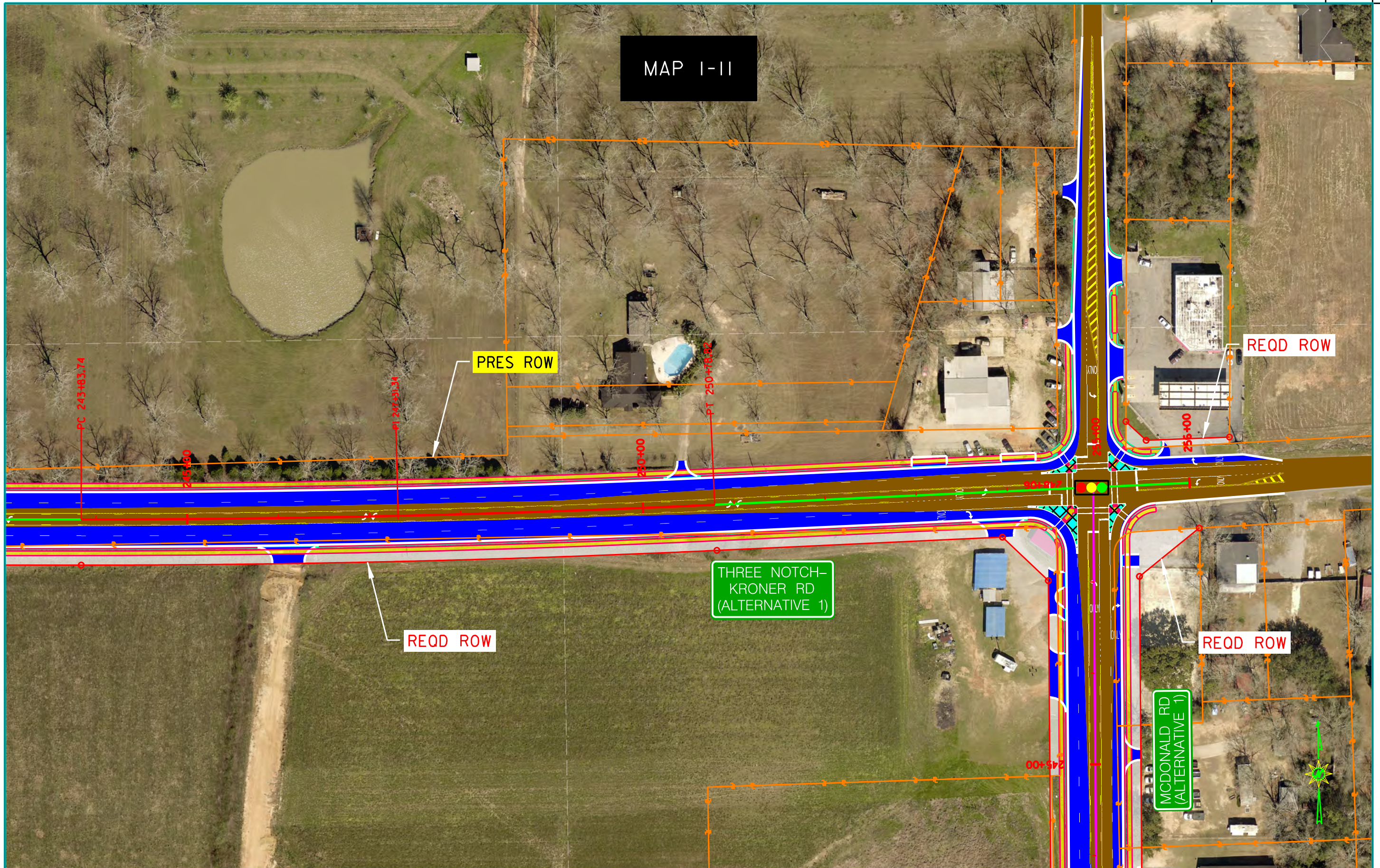
REFERENCE PROJECT NO	FISCAL YEAR	SHEET NO
MCR-2016-003	2022	



PLAN SUBMITTAL	MOBILE COUNTY COMMISSION McFARLAND ROAD FROM 0.1 MILE NORTH OF OLD PASCAGOULA ROAD TO THREE NOTCH - KRONER ROAD	HORIZ SCALE (FEET) 50 0 50	SHEET TITLE PLAN ALTERNATIVE 1	ROUTE MCDONALD ROAD
----------------	--------------------------------------------------------------------------------------------------------------------	-------------------------------	-----------------------------------	------------------------

PLAN - ALTERNATIVE 1 (Preferred Alternative)

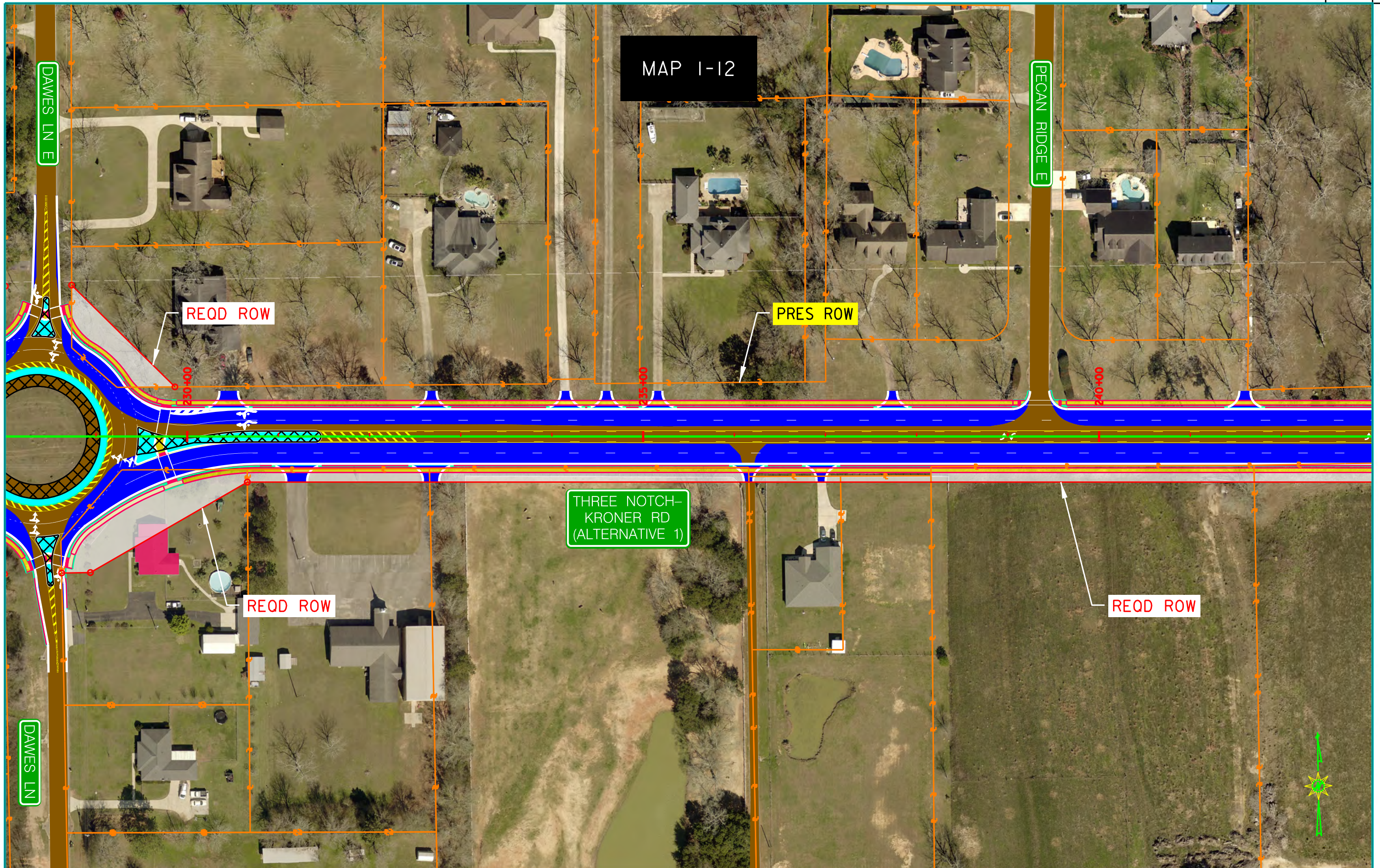
REFERENCE PROJECT NO	FISCAL YEAR	SHEET NO
MCR-2016-003	2022	



PLAN SUBMITTAL	MOBILE COUNTY COMMISSION MCDONALD ROAD FROM 0.1 MILE NORTH OF OLD PASCAGOULA ROAD TO THREE NOTCH-KRONER ROAD	HORIZ SCALE (FEET) VERT SCALE (FEET)	SHEET TITLE PLAN ALTERNATIVE 1	ROUTE MCDONALD ROAD
----------------	-----------------------------------------------------------------------------------------------------------------	-----------------------------------------	-----------------------------------	------------------------

PLAN - ALTERNATIVE 1 (Preferred Alternative)

REFERENCE PROJECT NO	FISCAL YEAR	SHEET NO
MCR-2016-003	2022	



PLAN SUBMITTAL

MOBILE COUNTY COMMISSION

MCFAIR AND ROAD FROM 0.1 MILE NORTH OF OLD PASCAGOULA ROAD TO THREE NOTCH - KRONER ROAD



SHEET TITLE

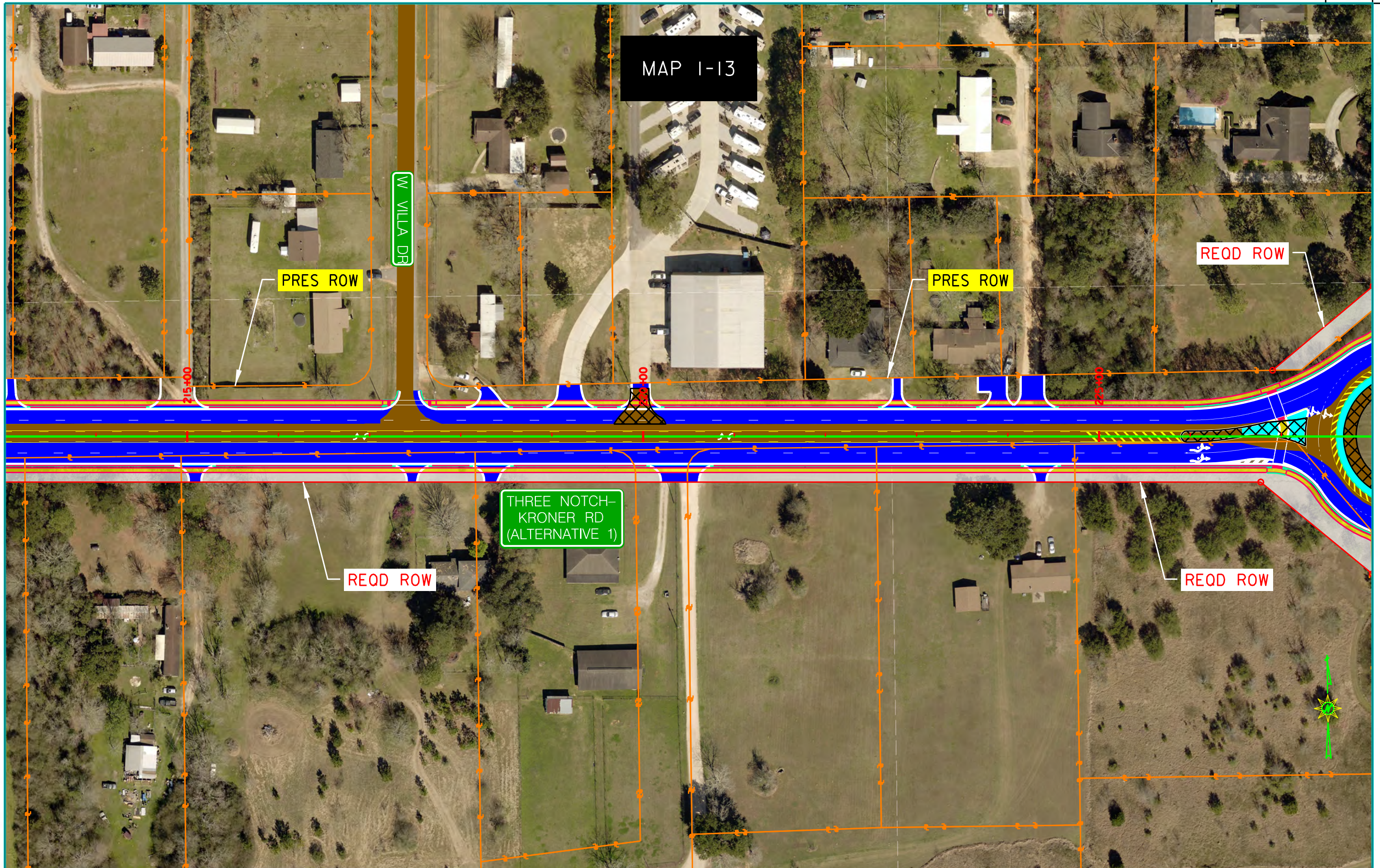
PLAN ALTERNATIVE 1

ROUTE

MC DONALD ROAD

PLAN - ALTERNATIVE 1 (Preferred Alternative)

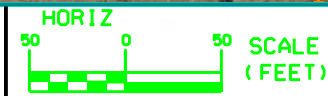
REFERENCE PROJECT NO	FISCAL YEAR	SHEET NO
MCR-2016-003	2022	



PLAN SUBMITTAL

MOBILE COUNTY COMMISSION

MCFAIR AND ROAD FROM 0.1 MILE NORTH OF OLD PASCAGOULA ROAD TO THREE NOTCH - KRONER ROAD



SHEET TITLE

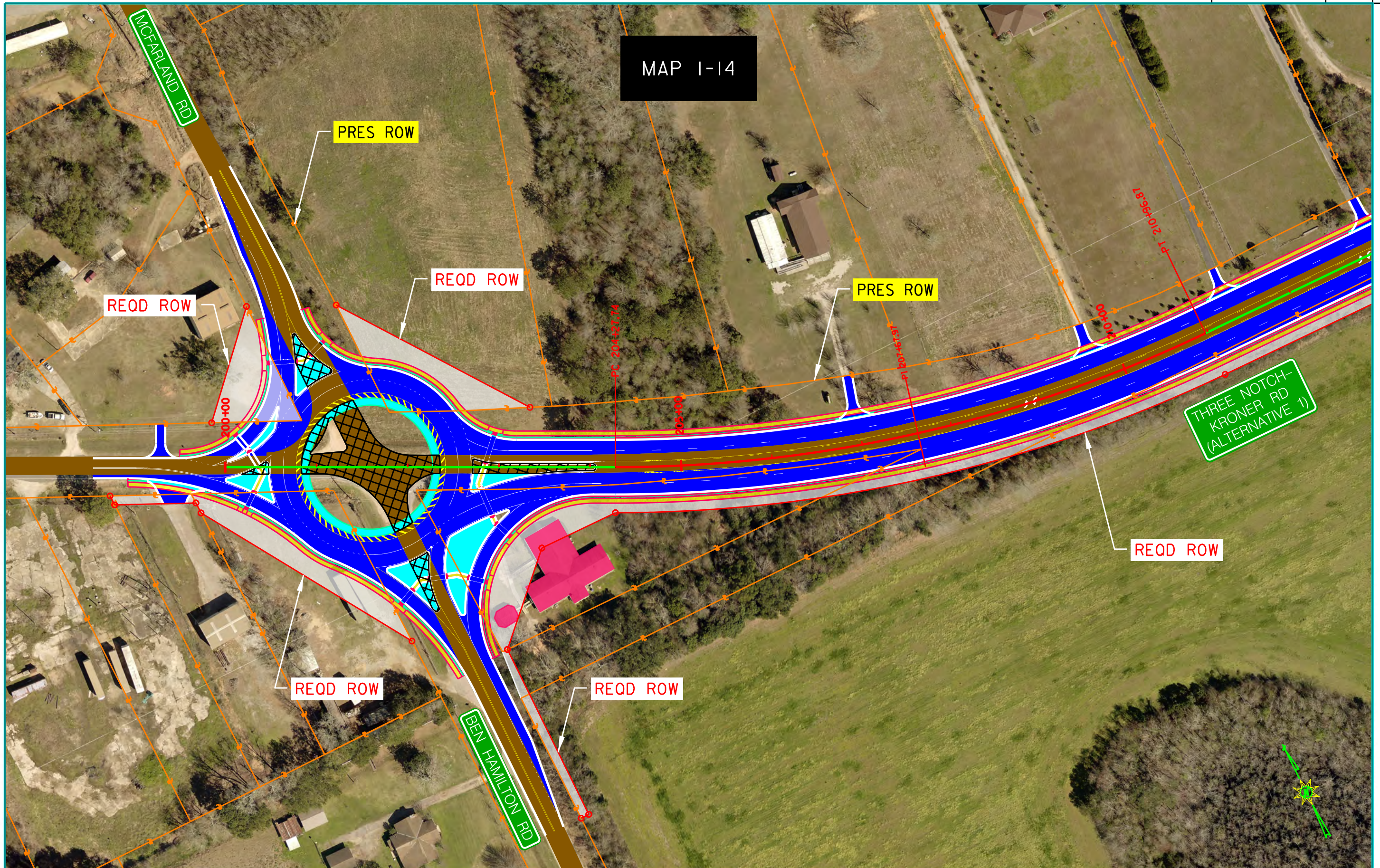
PLAN ALTERNATIVE 1

ROUTE

MC DONALD ROAD

PLAN - ALTERNATIVE 1 (Preferred Alternative)

REFERENCE PROJECT NO	FISCAL YEAR	SHEET NO
MCR-2016-003	2022	



MAP 1-14

THREE NOTCH-KRONER RD (ALTERNATIVE 1)

PLAN SUBMITTAL	MOBILE COUNTY COMMISSION MCFARLAND ROAD FROM 0.1 MILE NORTH OF OLD PASCAGOULA ROAD TO THREE NOTCH - KRONER ROAD	HORIZ SCALE (FEET) 50 0 50	SHEET TITLE PLAN ALTERNATIVE 1	ROUTE MCDONALD ROAD
----------------	--------------------------------------------------------------------------------------------------------------------	-------------------------------	-----------------------------------	------------------------