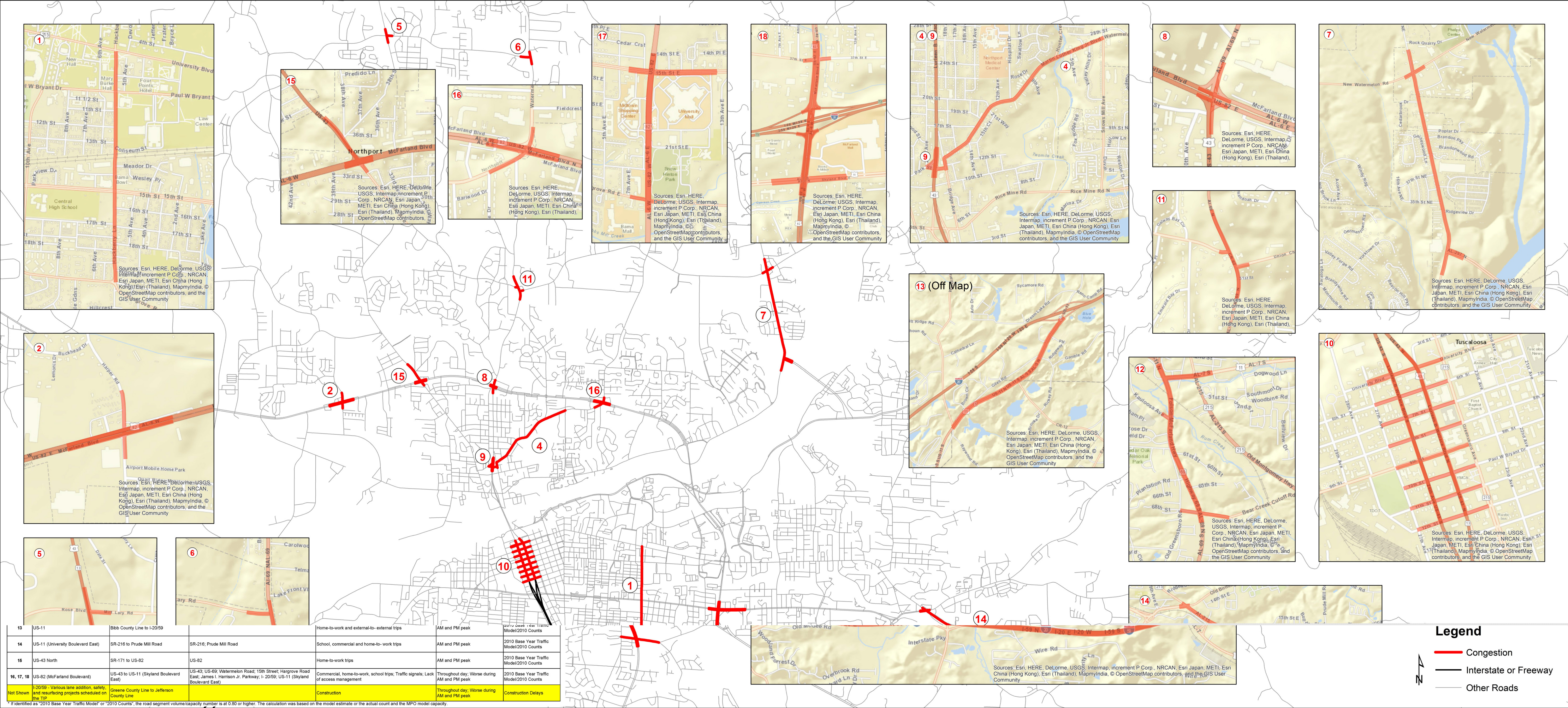


Bottlenecks and Chokepoints - Tuscaloosa, AL - As of 9/25/2015



ID	Route	Location	Primary Use	Peak Period	Notes
13	US-11	Bibb County Line to I-2059	Home-to-work and external-to-external trips	AM and PM peak	2010 Base Year Traffic Mode/2010 Counts
14	US-11 (University Boulevard East)	SR-216 to Prude Mill Road	School, commercial and home-to-work trips	AM and PM peak	2010 Base Year Traffic Mode/2010 Counts
15	US-43 North	SR-171 to US-82	Home-to-work trips	AM and PM peak	2010 Base Year Traffic Mode/2010 Counts
16, 17, 18	US-82 (McFarland Boulevard)	US-43 to US-11 (Skyland Boulevard East), James I. Harrison Jr. Parkway, I-2059, US-11 (Skyland Boulevard East)	Commercial, home-to-work, school trips; Traffic signals; Lack of access management	Throughout day; Worse during AM and PM peak	2010 Base Year Traffic Mode/2010 Counts
Not Shown	I-2059	Various lane addition, safety, and resurfacing projects scheduled on the TIP	Construction	Throughout day; Worse during AM and PM peak	Construction Delays

* If identified as "2010 Base Year Traffic Mode" or "2010 Counts", the road segment volume/capacity number is at 0.80 or higher. The calculation was based on the model estimate or the actual count and the MPO model capacity.

Source: ALDOT Metropolitan Planning Section - 9/28/2015

Legend

- Congestion
- Interstate or Freeway
- Other Roads

N