



Kay Ivey
GOVERNOR

ALABAMA
DEPARTMENT OF TRANSPORTATION

AERONAUTICS BUREAU
1409 COLISEUM BOULEVARD
MONTGOMERY, ALABAMA 36110
PHONE (334) 242-6820
FAX (334) 353-6540
Internet: www.dot.state.al.us



John R. Cooper
TRANSPORTATION DIRECTOR

June 14, 2023

Mr. Lee Hubbard, Chairman
CPCCR Airport Authority
P.O. Box 466
Centre, Alabama 35960

Subject: Annual Inspection Report
Centre-Piedmont-Cherokee County Regional Airport (PYP)

Dear Mr. Hubbard:

An inspection of the Centre-Piedmont-Cherokee County Regional Airport was conducted by personnel of the Alabama Department of Transportation Aeronautics Bureau on May 31, 2023. The purpose of the inspection was to update the information currently on file regarding the airport and to ascertain compliance with the rules and regulations of the Alabama Department of Transportation governing licensed public-use airports within the State of Alabama.

Attached you will find a copy of the Annual Inspection Report. As noted in the report, the airport meets the requirements for the issuance of an operating license. A signed license document will be mailed separately within a few weeks.

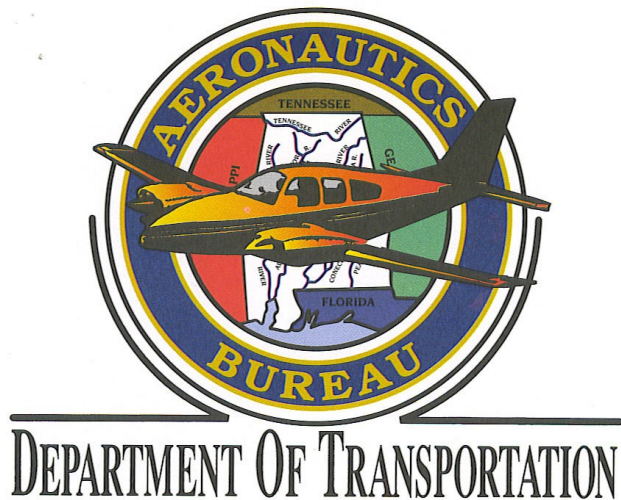
If you should have any questions concerning the inspection or corrective actions, please do not hesitate to contact Mr. Bennett Head with the Aeronautics Bureau at (334) 242-6831.

Sincerely,

Frank Farmer
Chief, Aeronautics Bureau

Copy: Mr. Rans Black, FAA/ADO
Mr. Lorn Whittaker, FAA/ADO
Ms. Jennifer Harp, P.E., Garver
Mr. Donnie Free, Airport Manager

May 31, 2023



**CENTRE-PIEDMONT-CHEROKEE COUNTY REGIONAL AIRPORT
(PYP)
CENTRE, ALABAMA**

Alabama Department of Transportation Aeronautics Bureau—Annual Airport Inspection Report

In accordance with the provisions of the Code of Alabama 23-1-357, an inspection of the **Centre-Piedmont-Cherokee County Regional Airport** was conducted by **Mr. Bennett Head** with the Alabama Department of Transportation Aeronautics Bureau on **May 31, 2023**.

The inspection was conducted on the airport under the provisions of the Administrative Code Chapter 450-9-1 for the following areas:

Aeronautics Administrative Code	Inspection Results	Corrective Action	Notes
Approach & Departure Paths Administrative Code 450-9-1-.12 (1)	<i>In Compliance</i>	N/A	N/A
Primary Surface Administrative Code 450-9-1-.12 (2)	<i>In Compliance</i>	N/A	N/A
Runway Safety Area Administrative Code 450-9-1-.12 (3)	<i>In Compliance</i>	N/A	N/A
Airport Markings Administrative Code 450-9-1-.12 (4)	<i>In Compliance</i> <i>Maintenance</i>	Clean Runway markings. If markings are unable to be cleaned, remark in accordance with FAA AC 150/5340-1M.	Runway Markings have accumulated algae. Taxiway markings by hangars are in poor condition.
Wind Direction Indicator Administrative Code 450-9-1-.12 (5)	<i>In Compliance</i>	N/A	N/A
Airport Lighting Administrative Code 450-9-1-.12 (6)	<i>In Compliance</i> <i>Maintenance</i>	N/A	One Runway light is inoperable.
Runway, Taxiway and Apron Conditions Administrative Code 450-9-1-.12 (7)	<i>In Compliance</i> <i>Maintenance</i>	Remove FOD found on taxiway surface by the hangars.	The taxiway near the hangars has a significant amount of FOD on the pavement.
Fueling Area Requirements Administrative Code 450-9-1-.12 (8)	<i>In Compliance</i>	N/A	N/A
Prohibited Activities Administrative Code 450-9-1-.16	<i>In Compliance</i>	N/A	N/A
Additional Items	<i>In Compliance</i>	N/A	N/A

License Status—**COMPLIANCE**

The corrective actions that may be prescribed in this inspection report do not relieve the airport sponsor from compliance with any other Federal, State or local laws, ordinances or regulations that may be applicable. It is the responsibility of the airport sponsor to be aware of and obey all Federal, State or local laws, ordinances or regulations that may have a bearing on the corrective actions that may be specified in this report.

Code of Alabama 23-1-357(a)... a person or municipality may not operate an airport, restricted landing area, or other navigation facility without a license issued by this Department.

Centre-Piedmont-Cherokee County Regional Airport

Approach and Departure Paths—RUNWAY 7

Administrative Code 450-9-1-.12(1)



No obstructions located in the ALDOT Approach/Departure Path of Runway 7.

Centre—Piedmont-Cherokee County Regional Airport

Approach and Departure Paths—RUNWAY 25

Administrative Code 450-9-1-.12(1)



No obstructions located in the ALDOT Approach/Departure Path of Runway 25.

Centre-Piedmont-Cherokee County Regional Airport

Primary Surface

Administrative Code 450-9-1-.12(2)



The Primary Surface **meets** state licensing standards.

Centre-Piedmont-Cherokee County Regional Airport

Runway Safety Area

Administrative Code 450-9-1-.12(3)



Runway Safety Area **meets** state licensing standards.

Centre-Piedmont-Cherokee County Regional Airport

Airport Markings—Runway

Administrative Code 450-9-1-.12(4)



Runway markings are in **FAIR** condition.

Maintenance Required: Clean Runway markings. If markings are unable to be cleaned, remark in accordance with FAA AC 150/5340-1M.

Centre-Piedmont-Cherokee County Regional Airport

Airport Markings—Taxiway

Administrative Code 450-9-1-.12(4)



Taxiway markings are generally in **GOOD** condition. However, Taxiway markings located next to the hangars are in **POOR** condition.

Centre-Piedmont-Cherokee County Regional Airport

Airport Markings—Apron

Administrative Code 450-9-1-.12(4)



Apron markings are in **FAIR** condition.

Centre-Piedmont-Cherokee County Reginal Airport

Wind Direction Indicator

Administrative Code 450-9-1-.12(5)



Wind direction indicator is in **GOOD** condition.

Centre-Piedmont-Cherokee Regional Airport

Airport Lighting

Administrative Code 450-9-1-.12(6)

An inspection of the lighting system had the following results:

Runway Lights	1 inoperable
Taxiway Lights	0 inoperable
Threshold Lights	0 inoperable
PAPI	0 inoperable
REIL	0 inoperable

MEETS State Licensing Standards for night-time operation.

Centre-Piedmont-Cherokee County Regional Airport

Runway, Taxiway and Apron Conditions—RUNWAY

Administrative Code 450-9-1-.12(7)



Runway surface is in **GOOD** condition.

Centre-Piedmont-Cherokee County Regional Airport

Runway, Taxiway and Apron Conditions—TAXIWAY

Administrative Code 450-9-1-.12(7)



The Parallel Taxiway surface is in **EXCELLENT** condition. However, the taxiway surface that leads to and around the hangars are in **FAIR** condition.

Maintenance Required: Remove FOD from taxiway that is on pavement surface leading to the hangars.

Centre-Piedmont-Cherokee County Regional Airport

Runway, Taxiway and Apron Conditions—APRON

Administrative Code 450-9-1-.12(7)



Apron surface is in **GOOD** condition.

Centre-Piedmont-Cherokee County Regional Airport

Fueling Area Requirements

Administrative Code 450-9-1-.12(8)



The fueling area meets the requirements established by the Alabama Department of Transportation. However, the State of Alabama Department of Agriculture may have additional requirements for fueling systems that were not considered during this inspection.

Centre-Piedmont-Cherokee County Regional Airport

Prohibited Activities

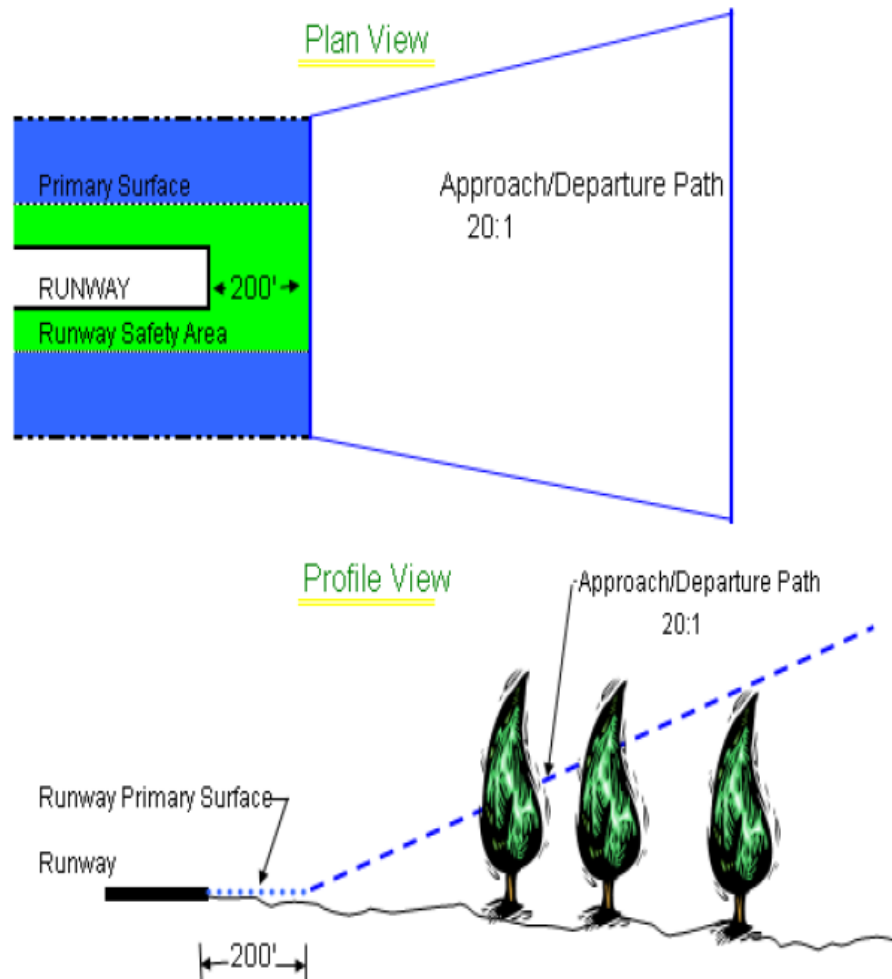
Administrative Code 450-9-1-.16



No prohibited activities were observed during this inspection.

APPENDIX 1

Approach and Departure Path Dimensions			
Inner Width	Outer Width	Length	Acreage
250 Feet	450 Feet	1,000 Feet	8.04 Acres
Primary Surface Dimensions			
250 Feet Wide Centered Along Runway Centerline			
Extending 200 Feet Past the Runway End			
Runway Safety Area Dimensions			
120 Feet Wide Centered Along Runway Centerline			
Extending 200 Feet Past the Runway End			



APPENDIX #2

CENTRE-PIEDMONT-CHEROKEE COUNTY REGIONAL AIRPORT
CENTRE, AL
MAY 31, 2023
RUNWAY 7 OBSTRUCTION EVALUATION

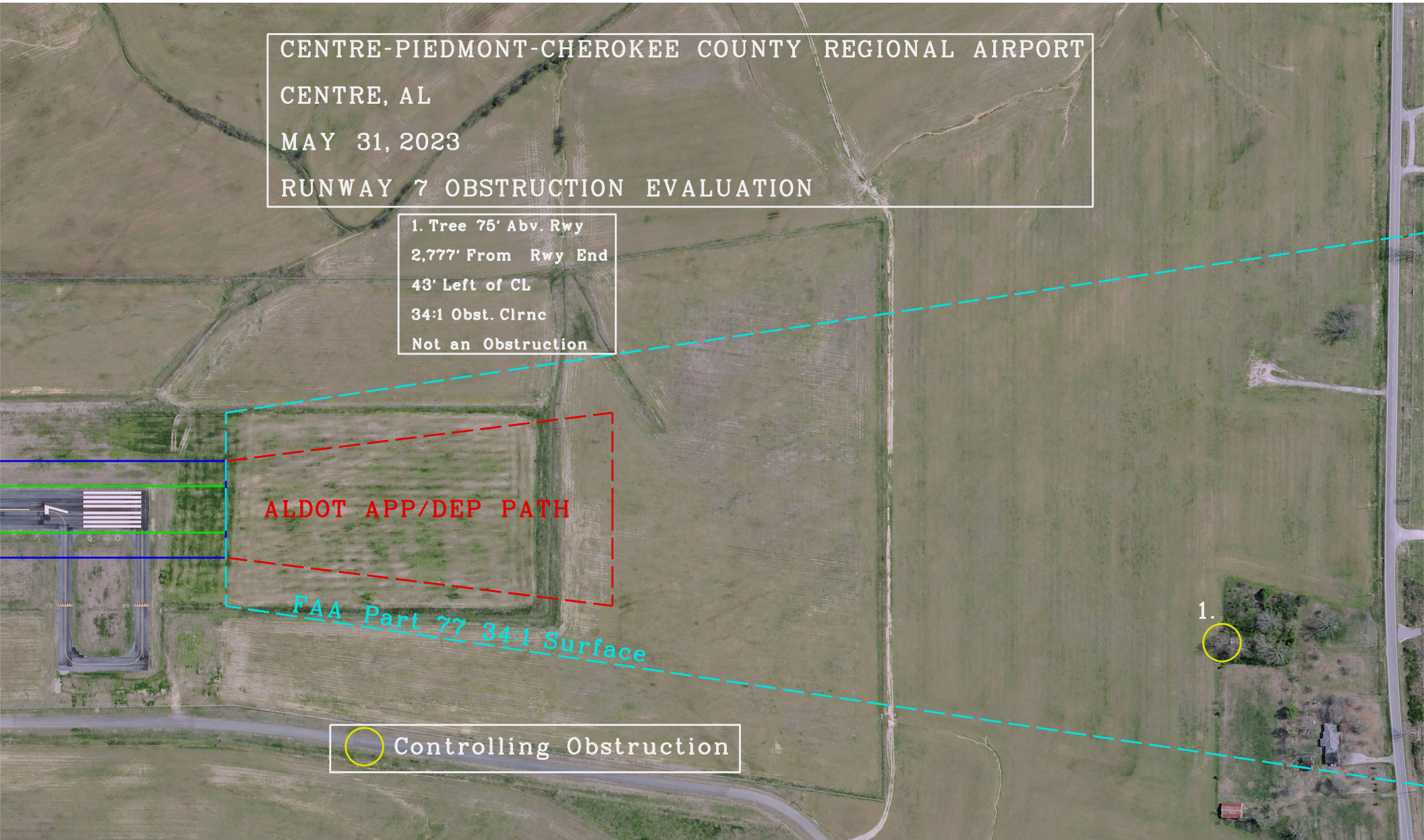
1. Tree 75' Abv. Rwy
2,777' From Rwy End
43' Left of CL
34:1 Obst. Clrnc
Not an Obstruction

ALDOT APP/DEP PATH

FAA Part 77 34:1 Surface

○ Controlling Obstruction

1. ○



APPENDIX #3

CENTRE-PIEDMONT-CHEROKEE COUNTY REGIONAL AIRPORT
CENTRE, AL
MAY 31, 2023
RUNWAY 25 OBSTRUCTION EVALUATION

2. Tree 35' Abv. Rwy
1,906' From Rwy End
369' Left of CL
49:1 Obst. Clrnc
Not an Obstruction

ALDOT APP/DEP PATH

FAA Part 77 34:1 Surface

○ Controlling Obstruction

