



Kay Ivey  
GOVERNOR

**ALABAMA**  
**DEPARTMENT OF TRANSPORTATION**

**AERONAUTICS BUREAU**  
**1409 COLISEUM BOULEVARD**  
**MONTGOMERY, ALABAMA 36110**  
PHONE (334) 242-6820  
FAX (334) 353-6540  
Internet: [www.dot.state.al.us](http://www.dot.state.al.us)



John R. Cooper  
TRANSPORTATION DIRECTOR

December 1, 2023

The Honorable Woody Jacobs  
Mayor, City of Cullman  
204 2nd Avenue NE  
Cullman, AL 35056

**Subject: Annual Inspection Report**  
**Cullman Regional Airport**

Dear Mayor Jacobs:

An inspection of Cullman Regional Airport was conducted by personnel of the Alabama Department of Transportation Aeronautics Bureau on November 17, 2023. The purpose of the inspection was to update the information currently on file regarding the airport and to ascertain compliance with the rules and regulations of the Alabama Department of Transportation governing licensed public-use airports within the State of Alabama.

Attached you will find a copy of the Annual Inspection Report. As noted in the report, the airport meets all requirements for the issuance of an operating license.

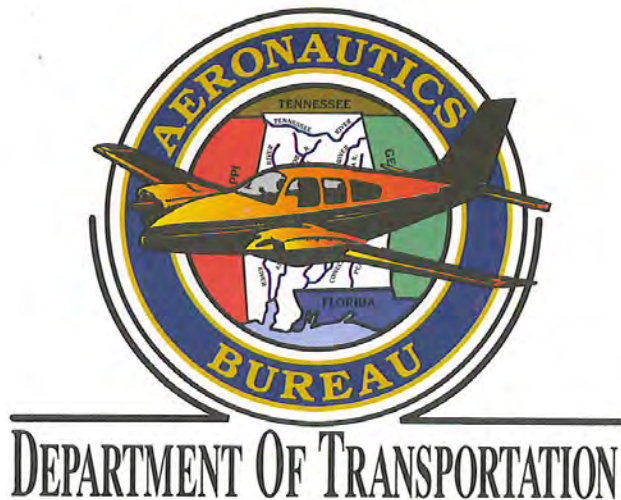
If you should have any questions concerning the inspection or corrective actions, please do not hesitate to contact Mr. Jason Hare with the Aeronautics Bureau at (334) 353-6223.

Sincerely,

Frank Farmer  
Chief, Aeronautics Bureau

Copy: Mr. Rans Black, FAA/ADO  
Mr. Ryan Constans, FAA/ADO  
Mr. Ben Harrison, Cullman Regional Airport  
Mr. Ryan Pierce, Goodwyn Mills and Cawood.

**November 17, 2023**



# **ANNUAL INSPECTION REPORT**



**CULLMAN REGIONAL AIRPORT  
CULLMAN ALABAMA**

## Alabama Department of Transportation Aeronautics Bureau—Annual Airport Inspection Report

In accordance with the provisions of the Code of Alabama 23-1-357, an inspection of the **Cullman Regional Airport** was conducted by **Mr. Jason Hare, Mr. Caleb Nall, and Noah Sowell** with the Alabama Department of Transportation Aeronautics Bureau on **November 17, 2023**.

The inspection was conducted on the airport under the provisions of the Administrative Code Chapter 450-9-1 for the following areas:

Aeronautics Administrative Code	Inspection Results	Corrective Action	Notes
<b>Approach &amp; Departure Paths</b> Administrative Code 450-9-1-.12 (1)	<i>In Compliance</i> <i>Maintenance</i>	Remove tree before it penetrates the FAA Part 77 Approach Path.	Tree was observed off of runway 20 that creates a 20:1 slope. The tree will penetrate FAA Part 77 Approach Path soon.
<b>Primary Surface</b> Administrative Code 450-9-1-.12 (2)	<i>In Compliance</i> <i>Maintenance</i>	Remove silt fence located in the primary service off of runway 20.	Silt fence was observed in the primary service off of runway 20.
<b>Runway Safety Area</b> Administrative Code 450-9-1-.12 (3)	<i>In Compliance</i>	N/A	N/A
<b>Airport Markings</b> Administrative Code 450-9-1-.12 (4)	<i>In Compliance</i>	N/A	N/A
<b>Wind Direction Indicator</b> Administrative Code 450-9-1-.12 (5)	<i>In Compliance</i>	N/A	N/A
<b>Airport Lighting</b> Administrative Code 450-9-1-.12 (6)	<i>In Compliance</i> <i>Maintenance</i>	The non-operational lights need to be replaced.	There were 10 taxiway lights out at the time of inspection with 1 missing. 2 runway lights missing. See page 10.
<b>Runway, Taxiway and Apron Conditions</b> Administrative Code 450-9-1-.12 (7)	<i>In Compliance</i> <i>Maintenance</i>	Clear all vegetation from apron	There are certain portions of the apron that have grass growing through the pavement.
<b>Fueling Area Requirements</b> Administrative Code 450-9-1-.12 (8)	<i>In Compliance</i> <i>Maintenance</i>	Replace all fading placards.	There are a few placards on the fuel tank that are fading and need to be replaced.
<b>Prohibited Activities</b> Administrative Code 450-9-1-.16	<i>In Compliance</i>	N/A	No evidence of prohibited activities were found.
<b>Additional Items</b> Administrative Code 450-9-1-.16	N/A	N/A	N/A

*License Status—***COMPLIANCE**

The corrective actions that may be prescribed in this inspection report do not relieve the airport sponsor from compliance with any other Federal, State or local laws, ordinances or regulations that may be applicable. It is the responsibility of the airport sponsor to be aware of and obey all Federal, State or local laws, ordinances or regulations that may have a bearing on the corrective actions that may be specified in this report.

**Code of Alabama 23-1-357(a)**... a person or municipality may not operate an airport, restricted landing area, or other navigation facility without a license issued by this Department.

## Cullman Regional Airport

### Approach and Departure Paths—RUNWAY 2

Administrative Code 450-9-1-.12(1)



No Obstructions were located in the ALDOT Approach/  
Departure Path of Runway 2.



## Cullman Regional Airport

### Approach and Departure Paths—RUNWAY 20

Administrative Code 450-9-1-.12(1)



There were no obstructions in the ALDOT Approach and Departure path. The tree circled in blue creates a 20:1 slope and could possibly penetrate the FAA Part 77 Approach Path soon. See Appendix 3 for more information.



## Cullman Regional Airport

### Primary Surface

Administrative Code 450-9-1-.12(2)



Primary Surface **MEETS** state licensing standards.

**Maintenance:** Remove silt fence out of primary surface area off of the end of RWY 20.



# Cullman Regional Airport

## Runway Safety Area

Administrative Code 450-9-1-.12(3)



Runway Safety Area **MEETS** state licensing standards.

## Cullman Regional Airport

### Airport Markings—Runway

Administrative Code 450-9-1-.12(4)



Runway markings are in **GOOD** condition.



## Cullman Regional Airport

### Airport Markings—Taxiway

Administrative Code 450-9-1-.12(4)



Taxiway markings are in **FAIR** condition.



## Cullman Regional Airport

### Airport Markings—Apron

Administrative Code 450-9-1-.12(4)



Apron markings are in **FAIR** condition.

## Cullman Regional Airport

### Wind Direction Indicator



Wind direction indicator is in **GOOD** condition.

## Cullman Regional Airport

### Airport Lighting

Administrative Code 450-9-1-.12(6)

An inspection of the lighting system had the following results:

<b>Runway Lights</b>	2 inoperable (Missing)
<b>Taxiway Lights</b>	10 inoperable (1 missing)
<b>Threshold Lights</b>	0 inoperable
<b>PAPI</b>	2 inoperable
<b>REIL</b>	0 inoperable

**MEETS** State Licensing Standards for night-time operation.

**Note:** The Airport Manager has issued a NOTAM informing pilots that the PAPIs on Runway 2 are unusable. The PAPIs should be flight checked by the FAA soon.



## Cullman Regional Airport

### Runway, Taxiway and Apron Conditions—RUNWAY

Administrative Code 450-9-1-.12(7)

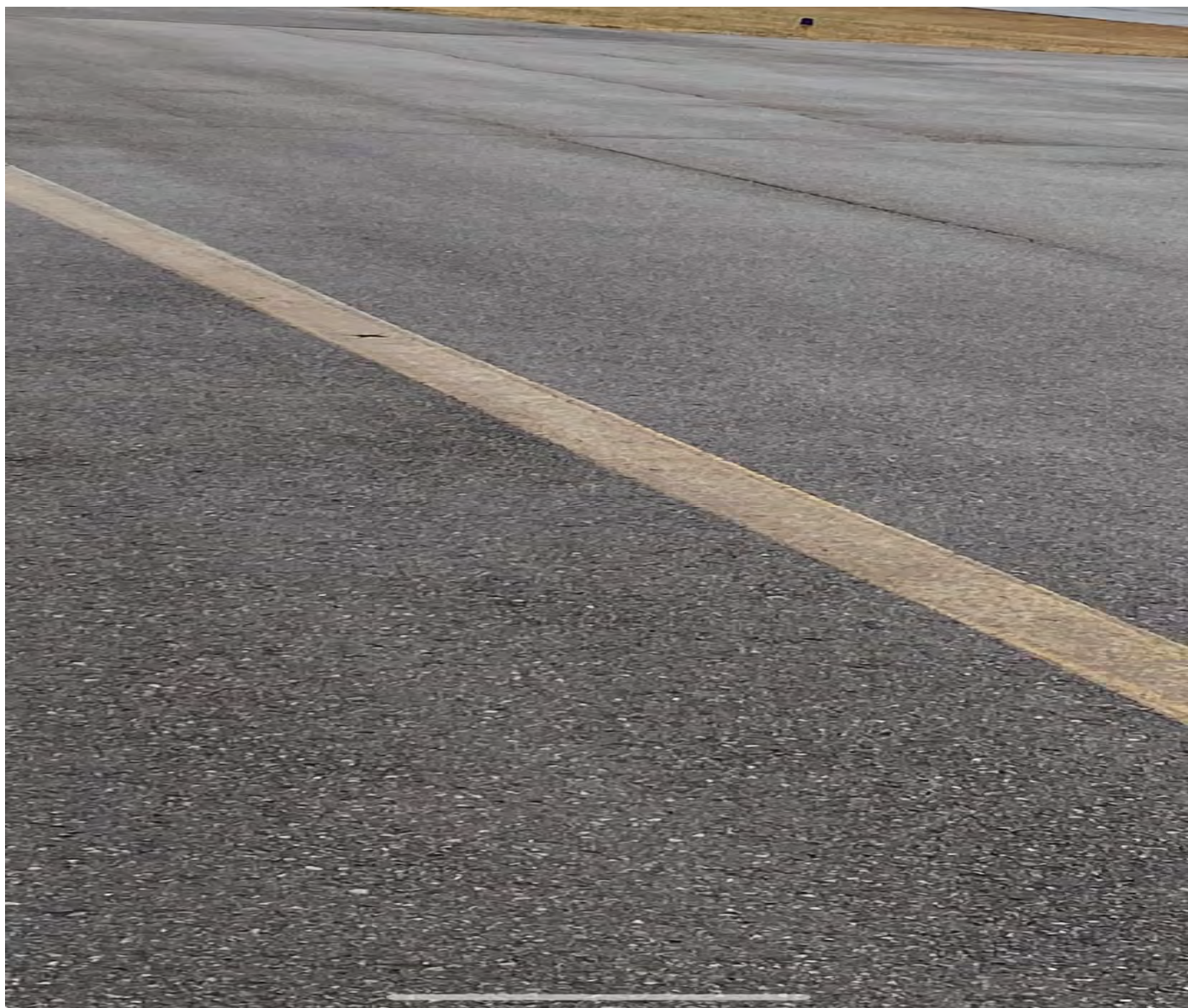


Runway surface is in **GOOD** condition.

## Cullman Regional Airport

### Runway, Taxiway and Apron Conditions—TAXIWAY

Administrative Code 450-9-1-.12(7)



Taxiway surface is in **FAIR** condition.



## Cullman Regional Airport

### Runway, Taxiway and Apron Conditions—APRON

Administrative Code 450-9-1-.12(7)



Apron surface is in **FAIR** condition.

**Maintenance**: Apron should be cleaned of all vegetation.



## Cullman Regional Airport

### Fueling Area Requirements

Administrative Code 450-9-1-.12(8)



Fueling area **MEETS** state licensing standards. However, the State of Alabama Department of Agriculture may have additional requirements for fueling systems that were not considered during this inspection.

**Maintenance:** Placards that are faded need to be replaced.

# Cullman Regional Airport

## Prohibited Activities

Administrative Code 450-9-1-.16

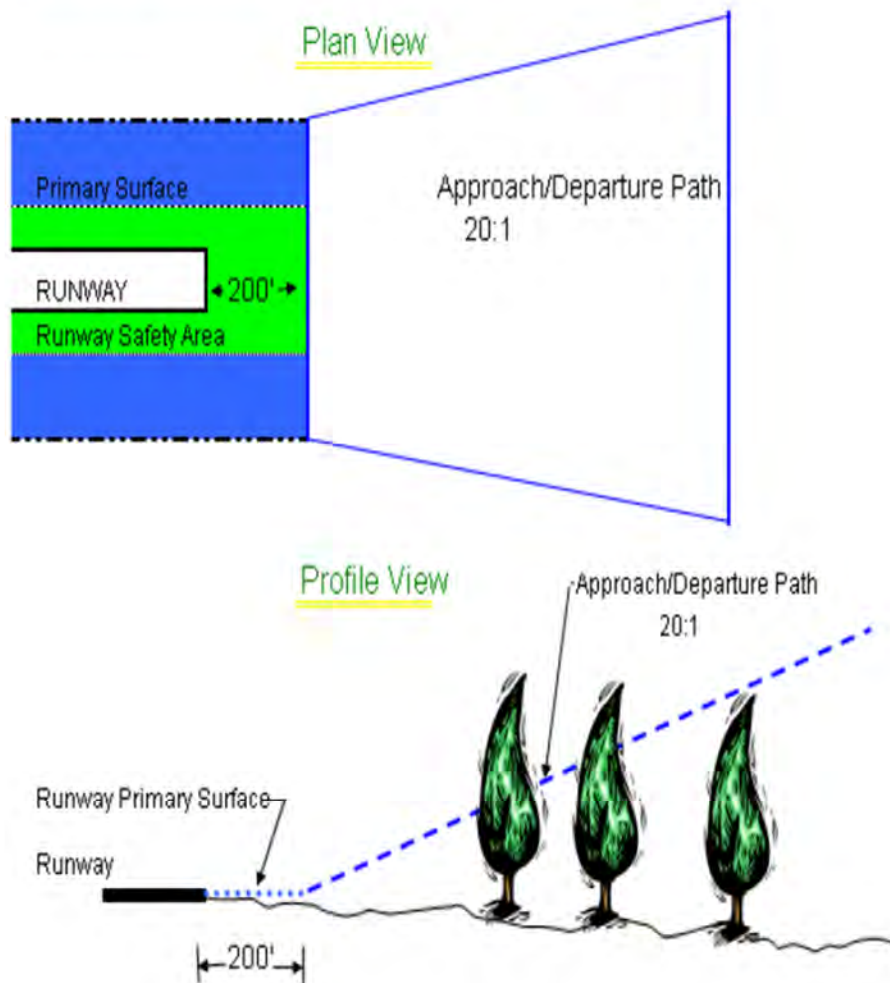


No prohibited activities were observed during this inspection.



# APPENDIX 1

Approach and Departure Path Dimensions			
Inner Width	Outer Width	Length	Acreage
250 Feet	450 Feet	1,000 Feet	8.04 Acres
Primary Surface Dimensions			
250 Feet Wide Centered Along Runway Centerline			
Extending 200 Feet Past the Runway End			
Runway Safety Area Dimensions			
120 Feet Wide Centered Along Runway Centerline			
Extending 200 Feet Past the Runway End			





# Appendix 2

Cullman Regional Airport  
Cullman, AL  
Runway 2  
Obstruction Evaluation  
November 17, 2023

2. Tree 74' Abv RWY End  
1843' from RWY End  
28' Left of CL  
22:1 Obstc Clnc

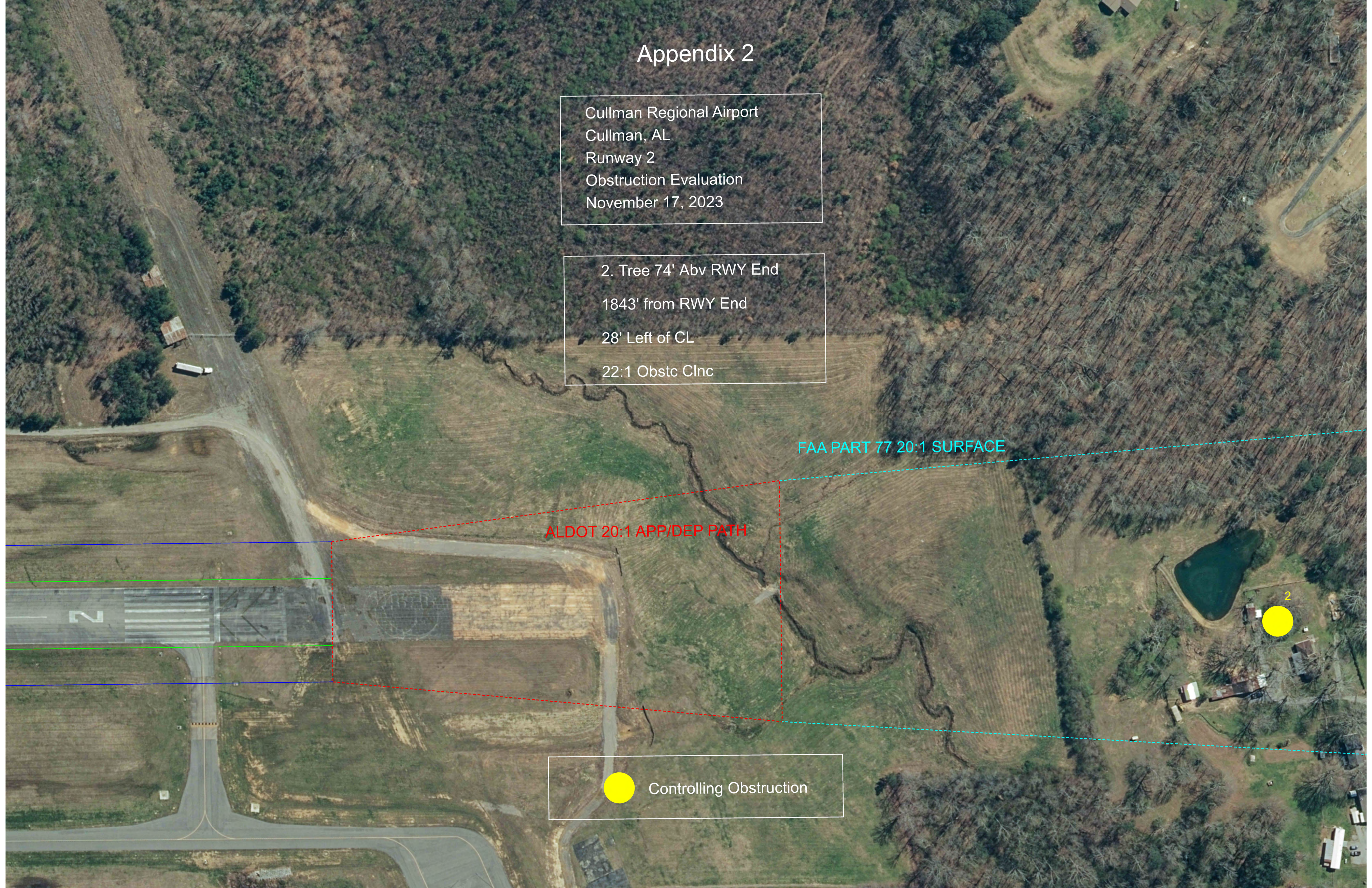
FAA PART 77 20:1 SURFACE

ALDOT 20:1 APP/DEP PATH



Controlling Obstruction

2





# Appendix 3

Cullman Regional Airport  
Cullman, AL  
Runway 20  
Obstruction Evaluation  
November 17, 2023

3. Tree 56' Abv Hold Short Line  
1358' From RWY End  
82' Left of RWY End  
20:1 Obstc Clnc

FAA PART 77 20:1 SURFACE

ALDOT 20:1 APP/DEP PATH

3

- FAA PART 77 VIOLATION
- CONTROLLING OBSTRUCTION

