



Kay Ivey
GOVERNOR

ALABAMA
DEPARTMENT OF TRANSPORTATION

AERONAUTICS BUREAU
1409 COLISEUM BOULEVARD
MONTGOMERY, ALABAMA 36130
PHONE (334) 242-6820
FAX (334) 353-6540



John R. Cooper
TRANSPORTATION DIRECTOR

January 31, 2024

The Honorable Brian Baine
Mayor, City of Fort Payne
100 Alabama Avenue NW
Fort Payne, Alabama 35967

**Subject: Annual Inspection Report
Isbell Field Airport (4A9)**

Dear Mayor Baine:

An inspection of the Isbell Field Airport was conducted by personnel of the Alabama Department of Transportation Aeronautics Bureau on January 11, 2024. The purpose of the inspection was to update the information currently on file regarding the airport and to ascertain compliance with the rules and regulations of the Alabama Department of Transportation governing licensed public-use airports within the State of Alabama.

Attached you will find a copy of the Annual Inspection Report for the airport. As noted in the report, the airport **meets** the requirements for the issuance of an operating license. However, there is a steady Jet-A leak at the fueling area that needs to be repaired as soon as possible. Ensure that all sources of the Jet-A leak at the fueling area are fixed and that areas where product has leaked are properly cleaned.

If you should have any questions concerning the inspection or corrective actions, please do not hesitate to contact Mr. Jason Hare with the Aeronautics Bureau at (334) 353-6223.

Sincerely,

Frank Farmer
Chief, Aeronautics Bureau

Copy: Mr. Lorn Whittaker, FAA/ADO
Mr. Jeff Redmill, P.E.; Barge Design Solutions
Mr. Barry Stone, Airport Manager
Mr. Robert A Parker, City Clerk

January 11, 2024



ANNUAL INSPECTION REPORT



**ISBELL FIELD AIRPORT
FORT PAYNE, ALABAMA**

Alabama Department of Transportation Aeronautics Bureau—Annual Airport Inspection Report

In accordance with the provisions of the Code of Alabama 23-1-357, an inspection of the **Isbell Field Airport** was conducted by **Mr. Jason Hare, Mr. Caleb Nall, and Mr. Noah Sowell** with the Alabama Department of Transportation Aeronautics Bureau on **January 11, 2024**.

The inspection was conducted on the airport under the provisions of the Administrative Code Chapter 450-9-1 for the following areas:

Aeronautics Administrative Code	Inspection Results	Corrective Action	Notes
Approach & Departure Paths Administrative Code 450-9-1-.12 (1)	<i>In Compliance</i> <i>Maintenance</i>	Remove trees that penetrate the FAA Part 77 34:1 surface.	There are trees that penetrate the FAA Part 77 34:1 surface inside the Runway 4 and Runway 22 approaches. See Appendix #2 and #3.
Primary Surface Administrative Code 450-9-1-.12 (2)	<i>In Compliance</i> <i>Maintenance</i>	Remove the old cover and replace with a new cover to ensure hole does not present a danger to any aircraft.	There is an exposed hole inside the primary surface adjacent to the runway. The cover to this hole is damaged.
Runway Safety Area Administrative Code 450-9-1-.12 (3)	<i>In Compliance</i>	N/A	N/A
Airport Markings Administrative Code 450-9-1-.12 (4)	<i>In Compliance</i> <i>Maintenance</i>	Clean or repaint markings in accordance with FAA AC 150/5340-1M.	There are apron, taxiway and runway markings that are faded. See pages 6 through 9.
Wind Direction Indicator Administrative Code 450-9-1-.12 (5)	<i>In Compliance</i>	N/A	N/A
Airport Lighting Administrative Code 450-9-1-.12 (6)	<i>In Compliance</i>	N/A	There were no inoperable airfield lights at the time of inspection.
Runway, Taxiway and Apron Conditions Administrative Code 450-9-1-.12 (7)	<i>In Compliance</i> <i>Maintenance</i>	Repair damaged pavement. Ensure no loose aggregate is present.	A portion of the apron at the hangars northeast of the terminal is damaged and loose pavement is creating a FOD hazard for aircraft. The Runway surface has some cracking with vegetation growing through these cracks.
Fueling Area Requirements Administrative Code 450-9-1-.12 (8)	<i>In Compliance</i> <i>Maintenance</i>	Please repair all sources of Jet-A leak and properly dispose of product that has leaked.	There is a Jet-A leak at the fuel farm. Product is dripping from underneath filter elements and pooling underneath.
Prohibited Activities Administrative Code 450-9-1-.16	<i>In Compliance</i>	N/A	No evidence of prohibited activities were found.
Additional Items	<i>In Compliance</i> <i>Maintenance</i>	Place dirt around light and concrete bases so there is no drop-off greater than 3 inches.	There is a drop-off greater than 3 inches around a light and concrete bases.

License Status— **Compliance**

The corrective actions that may be prescribed in this inspection report do not relieve the airport sponsor from compliance with any other Federal, State or local laws, ordinances or regulations that may be applicable. It is the responsibility of the airport sponsor to be aware of and obey all Federal, State or local laws, ordinances or regulations that may have a bearing on the corrective actions that may be specified in this report.

Code of Alabama 23-1-357(a)... a person or municipality may not operate an airport, restricted landing area, or other navigation facility without a license issued by this Department.

Isbell Field Airport

Approach and Departure Paths—Runway 4

Administrative Code 450-9-1-.12(1)



There were no obstructions in the ALDOT Approach/Departure Path of Runway 4. However, Tree #3, circled in blue, penetrates the FAA Part 77 34:1 surface. **Please see Appendix #2.**

Note: Obstructions identified are representative and may not include all existing obstructions.

Isbell Field Airport

Approach and Departure Paths—Runway 22

Administrative Code 450-9-1-.12(1)



There were no obstructions in the ALDOT Approach/Departure Path of Runway 22. However, three trees, not circled above, penetrate the FAA Part 77 34:1 surface. **Please see Appendix #3.**

Note: Obstructions identified are representative and may not include all existing obstructions.

Isbell Field Airport

Primary Surface

Administrative Code 450-9-1-.12(2)



MAINTENANCE: Primary Surface **MEETS** state licensing standards. However, there is an exposed pit inside the primary surface area, adjacent to the runway. Please remove the damaged metal cover and replace with a new cover so that the hole presents no danger for any aircraft that may maneuver off the runway and into the grass.

Isbell Field Airport

Runway Safety Area

Administrative Code 450-9-1-.12(3)



Runway Safety Area **MEETS** state licensing standards.

Isbell Field Airport

Airport Markings—Runway 4

Administrative Code 450-9-1-.12(4)



MAINTENANCE: Runway 4 markings are in **FAIR** condition. Touchdown markings are slightly faded. Please clean markings or repaint markings if necessary.

Isbell Field Airport

Airport Markings—Runway 22

Administrative Code 450-9-1-.12(4)



MAINTENANCE: Runway 22 markings are in **FAIR** condition. Runway identifier markings and touchdown markings are faded. Please clean markings or repaint markings if necessary.

Isbell Field Airport

Airport Markings—Taxiway

Administrative Code 450-9-1-.12(4)

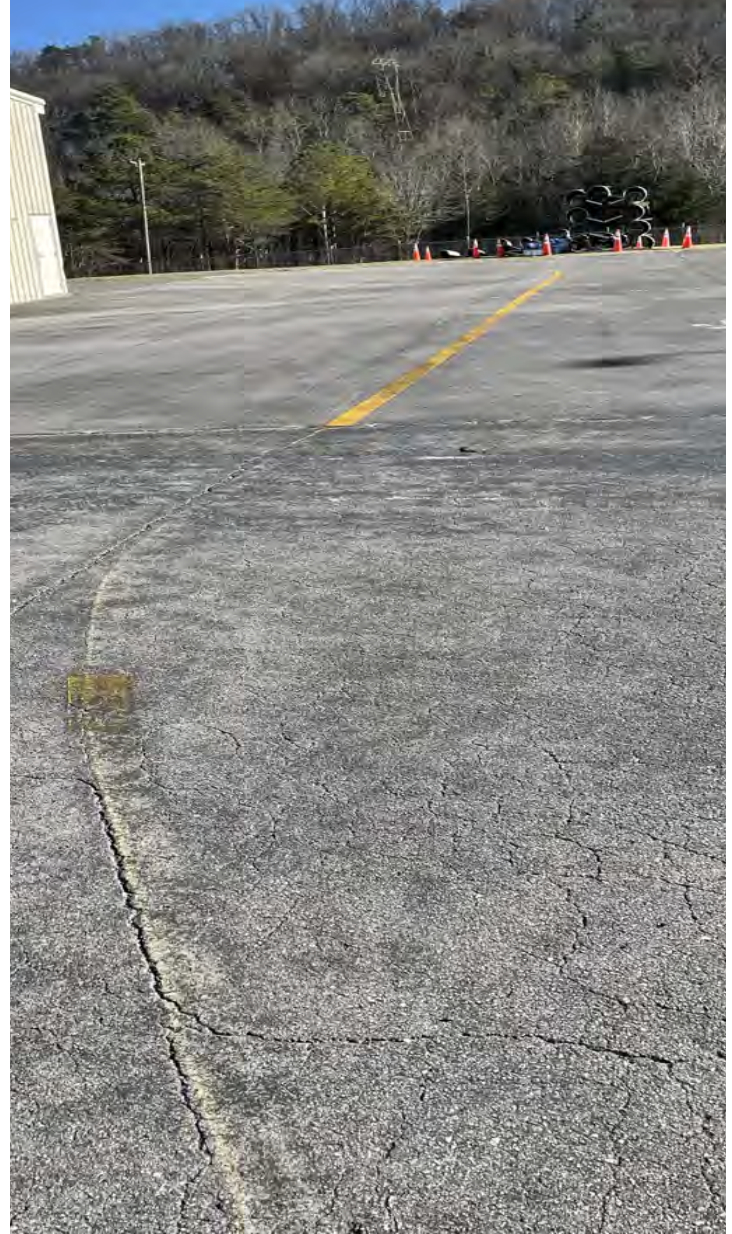


MAINTENANCE: Taxiway markings are in **FAIR** condition. Taxiway centerline and Runway hold short markings are slightly faded. Please clean or repaint markings.

Isbell Field Airport

Airport Markings—Apron

Administrative Code 450-9-1-.12(4)



MAINTENANCE: Apron markings are generally in **FAIR** condition, however a portion of the apron markings at the southwest hangars are in **POOR** condition. Markings are severely faded. Please clean or repaint markings.

Isbell Field Airport

Wind Direction Indicator

Administrative Code 450-9-1-.12(5)



Wind direction indicator is in **GOOD** condition, but somewhat faded. Please make preparations to replace soon.

Isbell Field Airport

Airport Lighting

Administrative Code 450-9-1-.12(6)

An inspection of the lighting system had the following results:

Runway Lights	0 inoperable
Taxiway Lights	0 inoperable
Threshold Lights	0 inoperable
PAPI	0 inoperable
REIL	0 inoperable

MEETS State Licensing Standards for night-time operation.

Isbell Field Airport

Runway, Taxiway and Apron Conditions—RUNWAY

Administrative Code 450-9-1-.12(7)



MAINTENANCE: Runway surface is in **FAIR** condition. Slight cracking exists on portions of the runway. Vegetation is growing through these cracks in some areas.

Isbell Field Airport

Runway, Taxiway and Apron Conditions—TAXIWAY

Administrative Code 450-9-1-.12(7)



Taxiway surface is in **GOOD** condition.

Isbell Field Airport

Runway, Taxiway and Apron Conditions—APRON

Administrative Code 450-9-1-.12(7)



MAINTENANCE: Apron surface is in **POOR** condition. Severe cracking on apron pavement at the northeast hangars has created a FOD hazard to aircraft. Please repair damage and ensure no loose pavement is present.

Isbell Field Airport

Runway, Taxiway and Apron Conditions—APRON

Administrative Code 450-9-1-.12(7)



MAINTENANCE: A portion of the pavement on the taxilane at the southwest hangars is damaged and has loose aggregate, vegetation and ruts. Please repair pavement so that aggregate and ruts do not present a danger to aircraft.

Isbell Field Airport

Fueling Area Requirements

Administrative Code 450-9-1-.12(8)

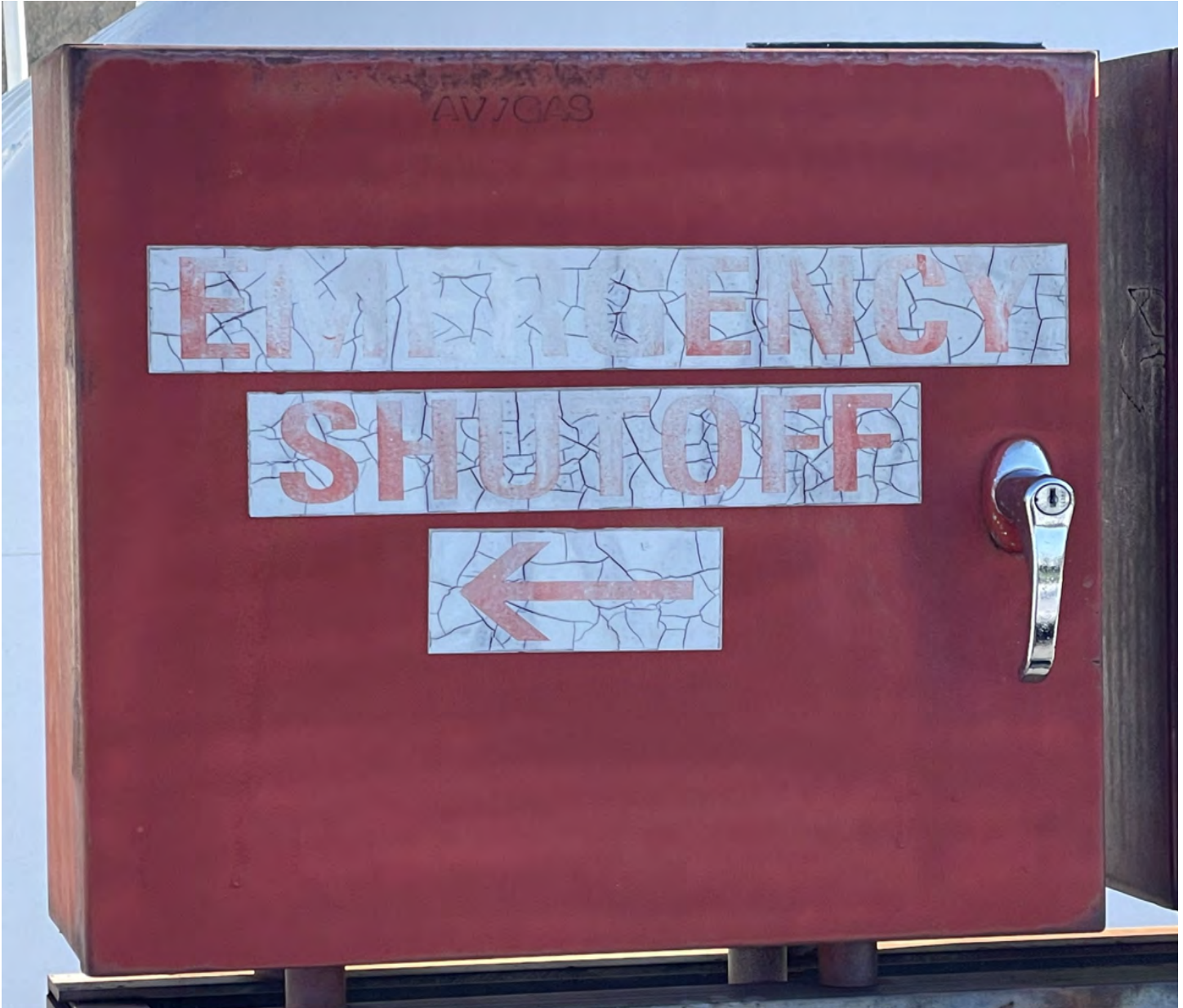


MAINTENANCE: There is a steady Jet-A leak at the fuel farm. Droplets of Jet-A are leaking from the filter elements and pooling underneath. Please ensure that no product is leaking at the fuel farm.

Isbell Field Airport

Fueling Area Requirements

Administrative Code 450-9-1-.12(8)



MAINTENANCE: Please replace faded stickers at fuel farm.

Isbell Field Airport

Prohibited Activities

Administrative Code 450-9-1-.16



No prohibited activities were observed during this inspection. All gates were locked and airfield access was secure.

Isbell Field Airport

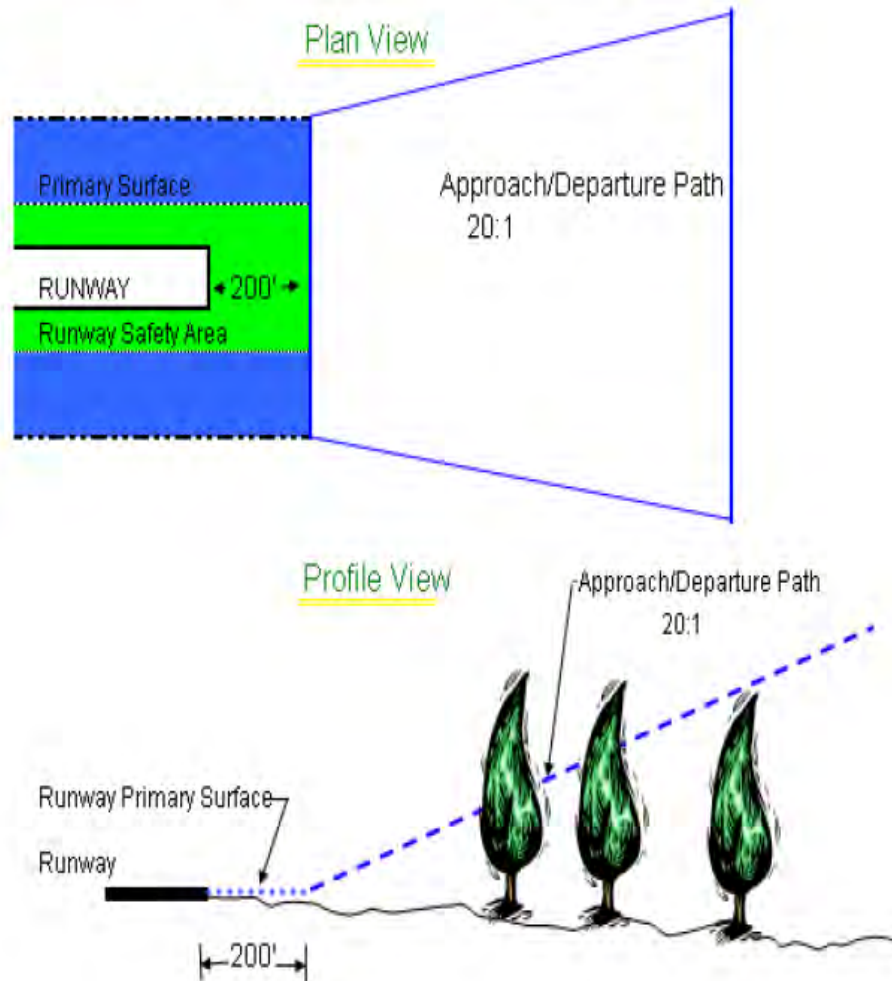
Additional Items



MAINTENANCE: Erosion on a light fixture and some concrete bases outside of the primary surface have created a drop higher than three inches. Please add dirt to bases so that the drop-off between the base and ground is no greater than three inches.

APPENDIX 1

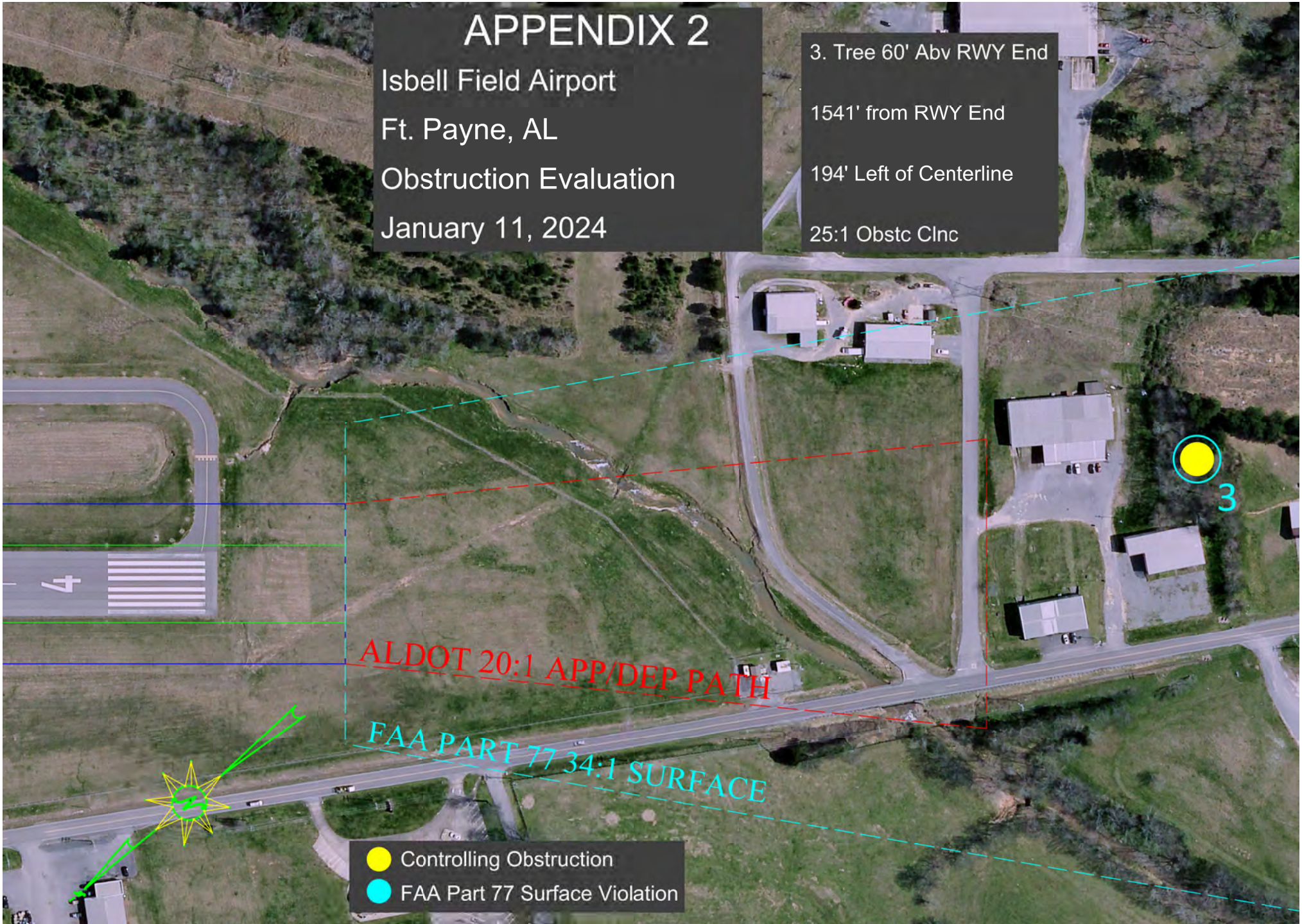
Approach and Departure Path Dimensions			
Inner Width	Outer Width	Length	Acreage
250 Feet	450 Feet	1,000 Feet	8.04 Acres
Primary Surface Dimensions			
250 Feet Wide Centered Along Runway Centerline			
Extending 200 Feet Past the Runway End			
Runway Safety Area Dimensions			
120 Feet Wide Centered Along Runway Centerline			
Extending 200 Feet Past the Runway End			



APPENDIX 2

Isbell Field Airport
Ft. Payne, AL
Obstruction Evaluation
January 11, 2024

3. Tree 60' Abv RWY End
1541' from RWY End
194' Left of Centerline
25:1 Obstc Clnc



- Controlling Obstruction
- FAA Part 77 Surface Violation

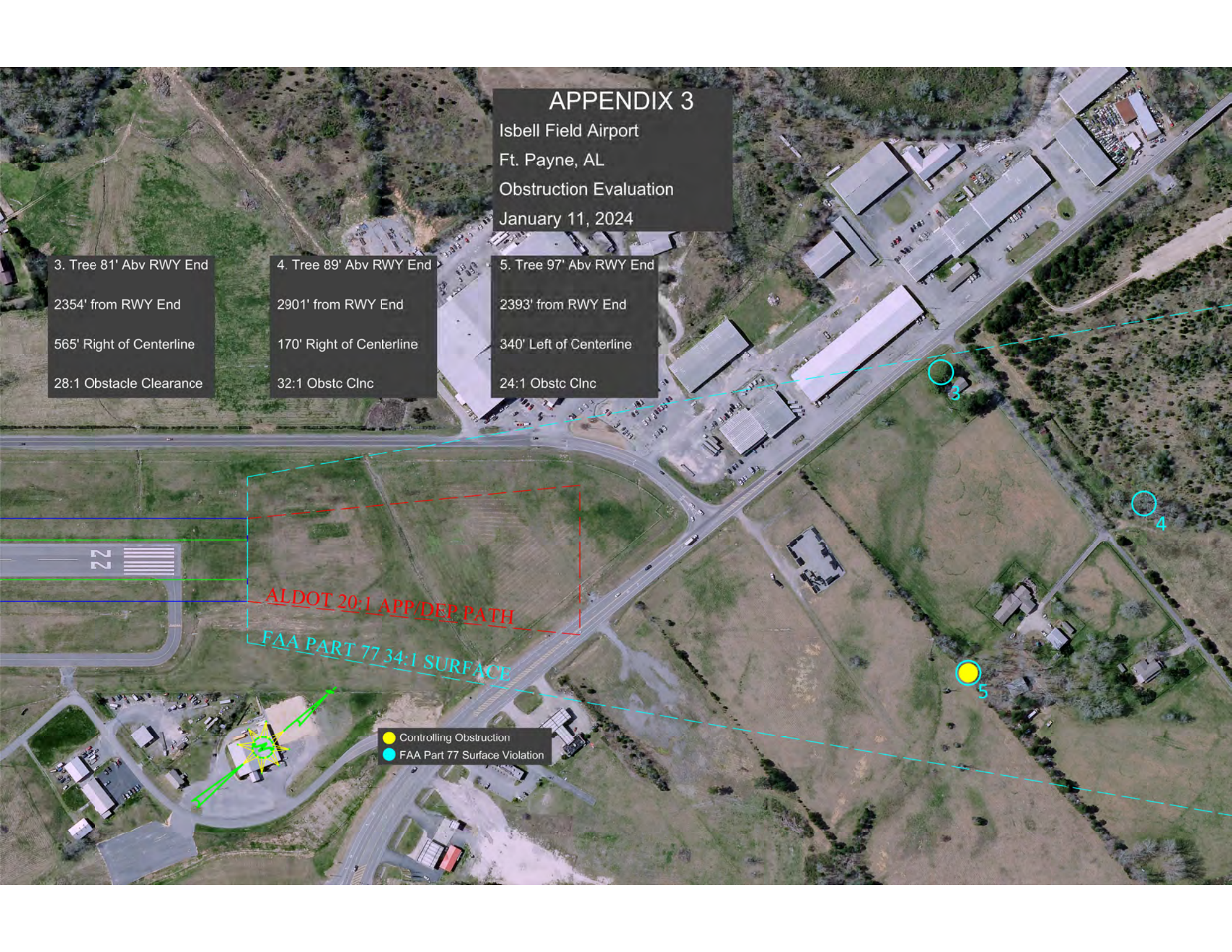
APPENDIX 3

Isbell Field Airport
Ft. Payne, AL
Obstruction Evaluation
January 11, 2024

3. Tree 81' Abv RWY End
2354' from RWY End
565' Right of Centerline
28:1 Obstacle Clearance

4. Tree 89' Abv RWY End
2901' from RWY End
170' Right of Centerline
32:1 Obstc Clnc

5. Tree 97' Abv RWY End
2393' from RWY End
340' Left of Centerline
24:1 Obstc Clnc



ALDOT 20:1 APP/DEP PATH

FAA PART 77 34:1 SURFACE

● Controlling Obstruction
● FAA Part 77 Surface Violation