



Kay Ivey
GOVERNOR

ALABAMA
DEPARTMENT OF TRANSPORTATION

AERONAUTICS BUREAU
1409 COLISEUM BOULEVARD
MONTGOMERY, ALABAMA 36110
PHONE (334) 242-6820
FAX (334) 353-6540
Internet: www.dot.state.al.us



John R. Cooper
TRANSPORTATION DIRECTOR

August 21, 2023

The Honorable Ed Beasley
Mayor, City of Luverne
P.O. Box 249
Luverne, Alabama 36049

Subject: Annual Inspection Report
Frank Sikes Airport

Dear Mayor Beasley:

An inspection of the Luverne (Frank Sikes) Municipal Airport was conducted by personnel of the Alabama Department of Transportation Aeronautics Bureau on June 27, 2023. The purpose of the inspection was to update the information currently on file regarding the airport and to ascertain compliance with the rules and regulations of the Alabama Department of Transportation governing licensed public-use airports within the State of Alabama.

Attached you will find a copy of the Annual Inspection Report. As noted in the report, the airport **does not meet** the requirements for the issuance of an operating license. Once the trees have been removed, please contact this office to schedule a re-inspection.

If you should have any questions concerning the inspection or corrective actions, please do not hesitate to contact Mr. Jason Hare with the Aeronautics Bureau at (334) 353-6223.

Sincerely,

Frank Farmer
Chief, Aeronautics Bureau

Copy: Mr. Rans Black, FAA/ADO
Mr. Brian Hendry, FAA
Mr. Steve L. Defee, Airport Board President

Alabama Department of Transportation Aeronautics Bureau—Annual Airport Inspection Report

In accordance with the provisions of the Code of Alabama 23-1-357, an inspection of the **Frank Sikes Municipal Airport** was conducted by **Mr. Jason Hare and Mr. Mark Bowron** with the Alabama Department of Transportation Aeronautics Bureau on **June 27, 2023**.

The inspection was conducted on the airport under the provisions of the Administrative Code Chapter 450-9-1 for the following areas:

Aeronautics Administrative Code	Inspection Results	Corrective Action	Notes
Approach & Departure Paths Administrative Code 450-9-1-.12 (1)	<i>VIOLATION</i>	There are trees on both RWY 04 and 22 that violate the ALDOT APP/DEP Path.	Remove the trees that violate the ALDOT APP/DEP path of RWY 04 and 22.
Primary Surface Administrative Code 450-9-1-.12 (2)	<i>In Compliance</i>	N/A	N/A
Runway Safety Area Administrative Code 450-9-1-.12 (3)	<i>VIOLATION</i>	Fill in ruts that were found in the Runway Safety Area.	Ruts were found in the Runway Safety Area
Airport Markings Administrative Code 450-9-1-.12 (4)	<i>In Compliance</i> <i>Maintenance</i>	Consult with engineer to add a hold short marking to the taxiway.	Taxiway markings are in Fair condition. Additionally, there are no hold short markings on taxiway.
Wind Direction Indicator Administrative Code 450-9-1-.12 (5)	<i>In Compliance</i> <i>Maintenance</i>	N/A	N/A
Airport Lighting Administrative Code 450-9-1-.12 (6)	<i>In Compliance</i> <i>Maintenance</i>	Ensure Airport Lighting is operational or NOTAMed for day-time VFR operations only.	During the inspection the lighting system was not able to be turned on via radio.
Runway, Taxiway and Apron Conditions Administrative Code 450-9-1-.12 (7)	<i>In Compliance</i> <i>Maintenance</i>	Consult with engineer about next rehab project.	The Apron is in poor condition, certain areas of the apron are completely failing.
Fueling Area Requirements Administrative Code 450-9-1-.12 (8)	<i>VIOLATION</i>	The leak should be repaired, and the contaminated soil should be removed.	There is an active fuel leak, which is contaminating the soil under the truck.
Prohibited Activities Administrative Code 450-9-1-.16	<i>In Compliance</i> <i>Maintenance</i>	Ensure that unauthorized people/businesses are not accessing the airport.	A business adjacent to the airport has been known to photograph customers on the runway.
Additional Items	<i>In Compliance</i>	N/A	N/A

License Status—SUSPENDED

The corrective actions that may be prescribed in this inspection report do not relieve the airport sponsor from compliance with any other Federal, State or local laws, ordinances or regulations that may be applicable. It is the responsibility of the airport sponsor to be aware of and obey all Federal, State or local laws, ordinances or regulations that may have a bearing on the corrective actions that may be specified in this report.

Code of Alabama 23-1-357(a)... a person or municipality may not operate an airport, restricted landing area, or other navigation facility without a license issued by this Department.

June 27, 2023



DEPARTMENT OF TRANSPORTATION

ANNUAL INSPECTION REPORT



**FRANK SIKES AIRPORT
LUVERNE, ALABAMA**

Frank Sikes Airport

Approach and Departure Paths—RUNWAY 04

Administrative Code 450-9-1-.12(1)



VIOLATION: There are penetrations to the ALDOT Approach/Departure Path of Runway 04. Please see Appendix #2 for more information.

Note: Obstructions identified are representative and may not include all existing obstructions.

Frank Sikes Airport

Approach and Departure Paths—RUNWAY 22

Administrative Code 450-9-1-.12(1)



VIOLATION: There are penetrations to the ALDOT Approach/Departure Path of Runway 22. Please see Appendix #3 for more information.

Note: Obstructions identified are representative and may not include all existing obstructions.

Frank Sikes Airport

Primary Surface

Administrative Code 450-9-1-.12(2)



Primary Surface **meets** state licensing standards.

Frank Sikes Airport

Runway Safety Area

Administrative Code 450-9-1-.12(3)



VIOLATION Runway Safety Area **Does Not Meet** state licensing standards. There are ruts located in the Runway Safety Area. Please repair ruts and ensure that the ground is level and smooth.

Frank Sikes Airport

Airport Markings—Runway

Administrative Code 450-9-1-.12(4)



Runway markings are in **FAIR** condition.

Frank Sikes Airport

Airport Markings—Taxiway

Administrative Code 450-9-1-.12(4)



Taxiway markings are in **FAIR** condition. Hold short line is missing and should be marked in accordance with FAA AC 150-5300-13B.

Frank Sikes Airport

Airport Markings—Apron

Administrative Code 450-9-1-.12(4)



Apron markings are in **FAIR** condition.

Frank Sikes Airport

Wind Direction Indicator

Administrative Code 450-9-1-.12(5)



Wind direction indicator is in **FAIR** condition. Please ensure that the windsock is lit for night time operations.

Frank Sikes Airport

Airport Lighting

Administrative Code 450-9-1-.12(6)

An inspection of the lighting system had the following results:

Runway Lights	Inoperable
Taxiway Lights	Inoperable
Threshold Lights	Inoperable
PAPI	Inoperable
REIL	N/A

The airport lighting system **DOES NOT** meet State Licensing Standards for night-time operation. During inspection, the lighting system was not able to be turned on by ALDOT personnel and the airport should be opened for **Daytime VFR Operations Only**. The Runway lights are not placed according to the standards of AC 150/5340-1M.

Frank Sikes Airport

Runway, Taxiway and Apron Conditions—RUNWAY

Administrative Code 450-9-1-.12(7)



Runway surface is in **FAIR** condition.

Frank Sikes Airport

Runway, Taxiway and Apron Conditions—TAXIWAY

Administrative Code 450-9-1-.12(7)



Taxiway surface is in **POOR** condition.

Frank Sikes Airport

Runway, Taxiway and Apron Conditions—APRON

Administrative Code 450-9-1-.12(7)



Apron surface is **POOR** in condition. Extensive longitudinal and transverse cracking, with complete failures in certain places.

Frank Sikes Airport

Fueling Area Requirements

Administrative Code 450-9-1-.12(8)



One of the fuel trucks is leaking fuel onto the ground contaminating the soil underneath. Also, the State of Alabama Department of Agriculture may have additional requirements for fueling systems that were not considered during this inspection.

Frank Sikes Airport

Prohibited Activities

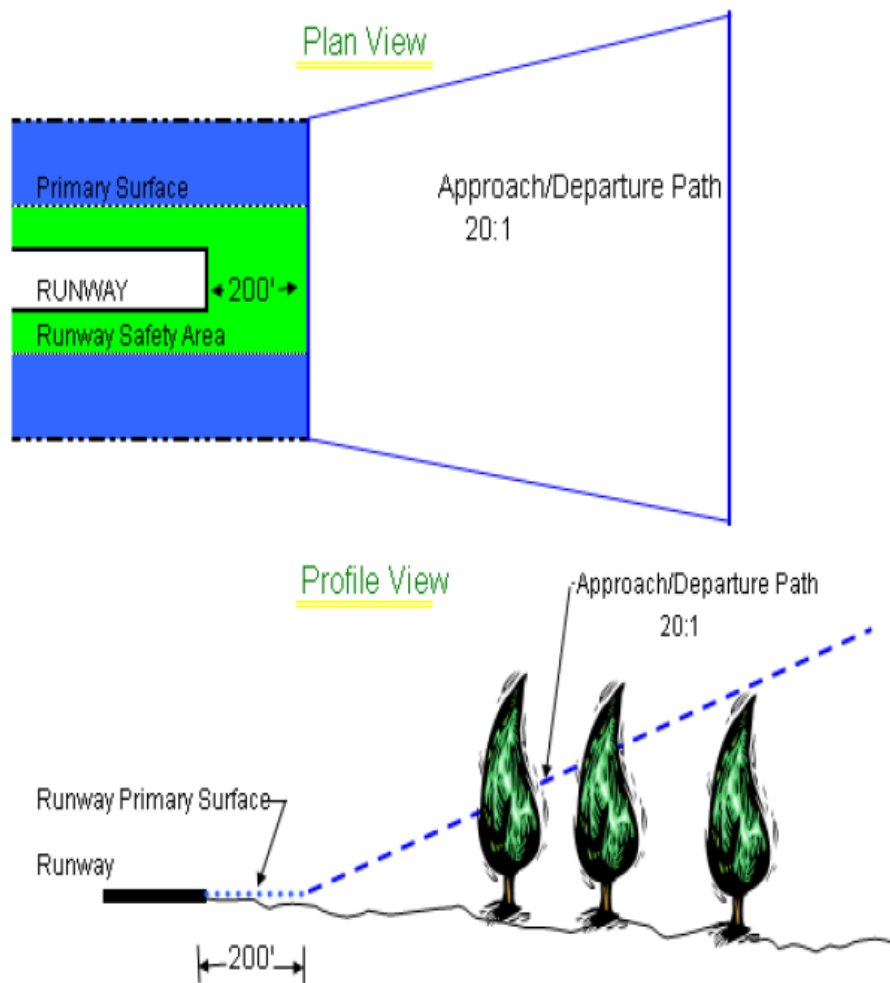
Administrative Code 450-9-1-.16



There has been a pattern of trespassing on airport property. An airport should only be accessed by the airport personnel, pilots, and the tenants at the airport. There should **Never** be people trespassing on airport property to take photos on the runway.

APPENDIX 1

Approach and Departure Path Dimensions			
Inner Width	Outer Width	Length	Acreage
250 Feet	450 Feet	1,000 Feet	8.04 Acres
Primary Surface Dimensions			
250 Feet Wide Centered Along Runway Centerline			
Extending 200 Feet Past the Runway End			
Runway Safety Area Dimensions			
120 Feet Wide Centered Along Runway Centerline			
Extending 200 Feet Past the Runway End			

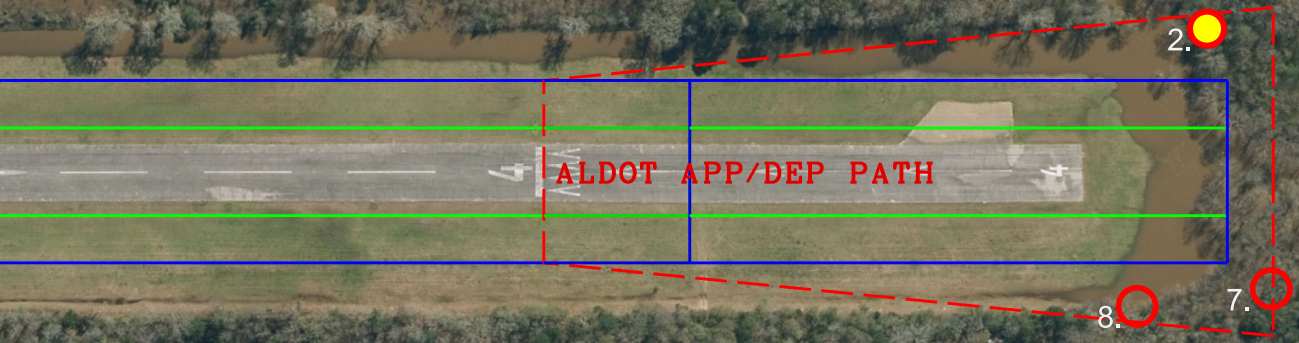


FRANK SIKES AIRPORT
LIVERNE, AL
JUNE 27, 2023
RWY 04 OBSTRUCTION EVALUATION

2. Tree 66' Abv. RWY
909' From Displaced Threshold
196' Right of CL
13:1 Obst. Clrnc

7. Tree 71' Abv. RWY
997' From Displaced Threshold
160' Left of CL
14:1 Obst. Clrnc

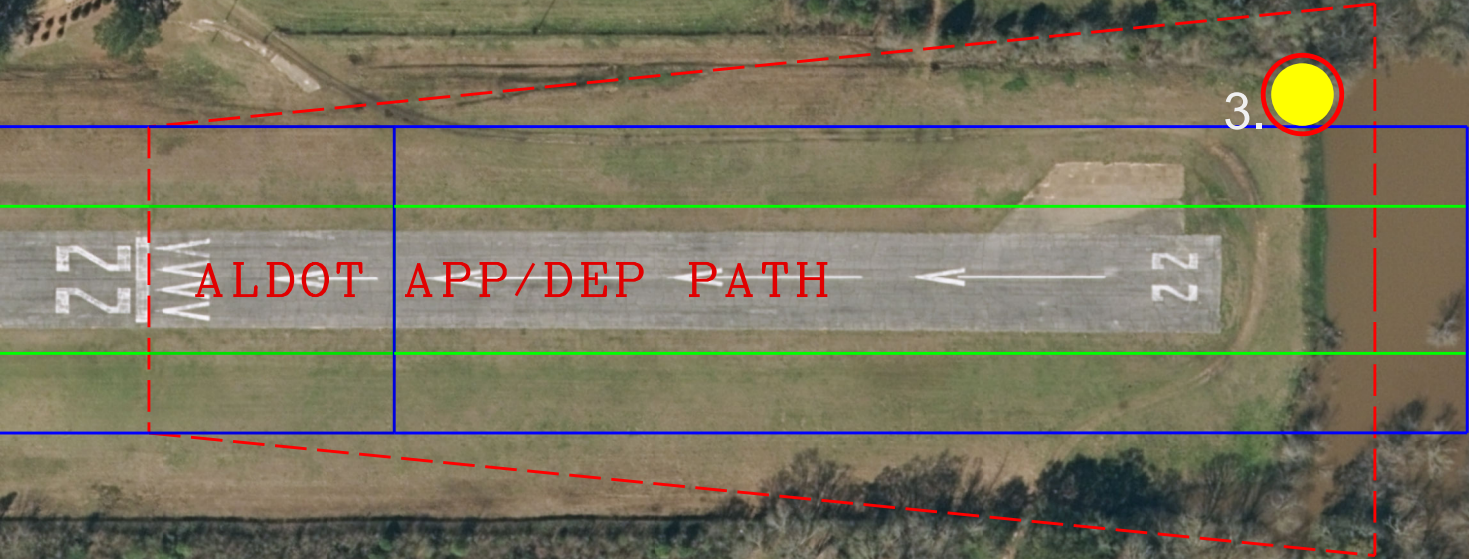
8. Tree 55' Abv. RWY
813' From Displaced Threshold
185' Left of CL
14:1 Obst. Clrnc



○ ALDOT APP/DEP Violation
● Controlling Obstruction

FRANK SIKES AIRPORT
LIVERNE, AL
JUNE 27, 2023
RWY 22 OBSTRUCTION EVALUATION

3. Tree 60' Abv. RWY
941' From Displaced Threshold
151' Right of CL
15:1 Obst. Clrnc



 ALDOT APP/DEP Violation
 Controlling Obstruction