



Kay Ivey
GOVERNOR

ALABAMA
DEPARTMENT OF TRANSPORTATION

AERONAUTICS BUREAU
1409 COLISEUM BOULEVARD
MONTGOMERY, ALABAMA 36110
PHONE (334) 242-6820
FAX (334) 353-6540
Internet: www.dot.state.al.us



John R. Cooper
TRANSPORTATION DIRECTOR

March 5, 2024

The Honorable Bill Hamburger
Chairman, Prattville Airport Authority
1450 Aviation Way
Prattville, Alabama 36067

Subject: Annual Inspection Report
Grouby Field Airport

Dear Chairman Hamburger:

An inspection of the Grouby Field Airport was conducted by personnel of the Alabama Department of Transportation, Aeronautics Bureau on February 27, 2024. The purpose of the inspection was to update the information currently on file regarding the airport and to ascertain compliance with the rules and regulations of the Alabama Department of Transportation governing licensed public-use airports within the State of Alabama.

Attached you will find a copy of the Annual Inspection Report for the airport. As noted in the report, the airport **meets** all requirements for the issuance of a State Operating License.

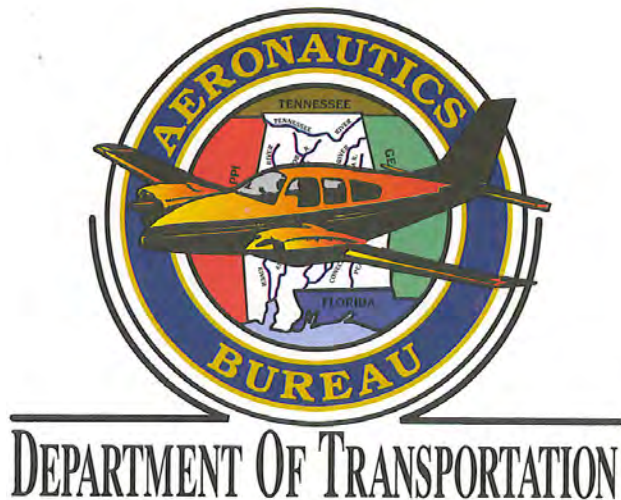
If you should have any questions concerning the inspection or corrective actions, please do not hesitate to contact Mr. Caleb Nall with the Aeronautics Bureau at (334) 312-6748.

Sincerely,

Frank Farmer
Chief, Aeronautics Bureau

Copy: Mr. Rans Black, FAA/ADO
Mrs. Inez Williams, FAA/ADO
Mr. Paul Gardner, Airport Manager
Mr. Jordan Russell, GMC

February 27, 2024



ANNUAL INSPECTION REPORT



**GROUBY FIELD AIRPORT
PRATTVILLE, ALABAMA**

Alabama Department of Transportation Aeronautics Bureau—Annual Airport Inspection Report

In accordance with the provisions of the Code of Alabama 23-1-357, an inspection of the **Grouby Field Airport** was conducted by **Mr. Caleb Nall** with the Alabama Department of Transportation Aeronautics Bureau on **February 27, 2024**.

The inspection was conducted on the airport under the provisions of the Administrative Code Chapter 450-9-1 for the following areas:

Aeronautics Administrative Code	Inspection Results	Corrective Action	Notes
Approach & Departure Paths Administrative Code 450-9-1-.12 (1)	<i>In Compliance</i> <i>Maintenance</i>	Remove all obstructions within the FAA Part 77 Surface.	Trees were observed in the FAA Part 77 Surface.
Primary Surface Administrative Code 450-9-1-.12 (2)	<i>In Compliance</i>	N/A	N/A
Runway Safety Area Administrative Code 450-9-1-.12 (3)	<i>In Compliance</i> <i>Maintenance</i>	Fill or cover hole that is in the Runway Safety Area.	A hole was observed in the Runway Safety Area.
Airport Markings Administrative Code 450-9-1-.12 (4)	<i>In Compliance</i>	N/A	N/A
Wind Direction Indicator Administrative Code 450-9-1-.12 (5)	<i>In Compliance</i>	N/A	N/A
Airport Lighting Administrative Code 450-9-1-.12 (6)	<i>In Compliance</i> <i>Maintenance</i>	The non-operational lights need to be replaced.	There were 9 lights out at the time of inspection. See page 10.
Runway, Taxiway and Apron Conditions Administrative Code 450-9-1-.12 (7)	<i>In Compliance</i> <i>Maintenance</i>	Clear all vegetation from runway.	There are certain portions of the runway that have grass growing through the pavement.
Fueling Area Requirements Administrative Code 450-9-1-.12 (8)	<i>In Compliance</i>	N/A	N/A
Prohibited Activities Administrative Code 450-9-1-.16	<i>In Compliance</i>	N/A	No evidence of prohibited activities were found.
Additional Items	<i>In Compliance</i> <i>Maintenance</i>	The drainage area needs maintenance.	Drainage area needs maintenance.

License Status—Compliance

The corrective actions that may be prescribed in this inspection report do not relieve the airport sponsor from compliance with any other Federal, State or local laws, ordinances or regulations that may be applicable. It is the responsibility of the airport sponsor to be aware of and obey all Federal, State or local laws, ordinances or regulations that may have a bearing on the corrective actions that may be specified in this report.

Code of Alabama 23-1-357(a)... a person or municipality may not operate an airport, restricted landing area, or other navigation facility without a license issued by this Department.

Grouby Field Airport

Approach and Departure Paths—RUNWAY 9

Administrative Code 450-9-1-.12(1)



No obstructions were located in the ALDOT Approach/Departure Path of Runway 9. The trees circled in blue penetrate the FAA Part 77 Approach Path. Please see Appendix 2 for more information.

Grouby Field Airport

Approach and Departure Paths—RUNWAY 27

Administrative Code 450-9-1-.12(1)



No obstructions were located in the ALDOT Approach/Departure Path of Runway 27. The tree circled in blue penetrates the FAA Part 77 Approach Path. The tree circled in orange creates a 20:1 slope and is expected to penetrate the ALDOT Approach/Departure Path soon. Please see Appendix 3 for more information.

Grouby Field Airport

Primary Surface

Administrative Code 450-9-1-.12(2)



Primary Surface **MEETS** state licensing standards.

Grouby Field Airport

Runway Safety Area

Administrative Code 450-9-1-.12(3)



Runway Safety Area **MEETS** state licensing standards.

Maintenance: Ensure that all holes in the Runway Safety Area are covered.

Grouby Field Airport

Airport Markings—Runway

Administrative Code 450-9-1-.12(4)



Runway markings are in **GOOD** condition.

Grouby Field Airport

Airport Markings—Taxiway

Administrative Code 450-9-1-.12(4)



Taxiway markings are in **GOOD** condition.

Grouby Field Airport

Airport Markings—Apron

Administrative Code 450-9-1-.12(4)



Apron markings are in **GOOD** condition.

Grouby Field Airport

Wind Direction Indicator

Administrative Code 450-9-1-.12(5)



Wind direction indicator is in **GOOD** condition.

Grouby Field Airport

Airport Lighting

Administrative Code 450-9-1-.12(6)

An inspection of the lighting system had the following results:

Runway Lights	1 inoperable
Taxiway Lights	8 inoperable
Threshold Lights	0 inoperable
PAPI	0 inoperable
REIL	0 inoperable

MEETS State Licensing Standards for night-time operation.

Grouby Field Airport

Runway, Taxiway and Apron Conditions—RUNWAY

Administrative Code 450-9-1-.12(7)



Runway surface is in **FAIR** condition.

Maintenance: Runway should be cleaned of all vegetation.

Grouby Field Airport

Runway, Taxiway and Apron Conditions—TAXIWAY

Administrative Code 450-9-1-.12(7)



Taxiway surface is in **FAIR** condition.

Grouby Field Airport

Runway, Taxiway and Apron Conditions—APRON

Administrative Code 450-9-1-.12(7)



Apron surface is in **GOOD** condition.

Grouby Field Airport

Fueling Area Requirements

Administrative Code 450-9-1-.12(8)



Fueling area **MEETS** state licensing standards. However, the State of Alabama Department of Agriculture may have additional requirements for fueling systems that were not considered during this inspection.

Grouby Field Airport

Prohibited Activities

Administrative Code 450-9-1-.16



No prohibited activities were observed during this inspection. All gates were locked and airfield access was secured.

Grouby Field Airport

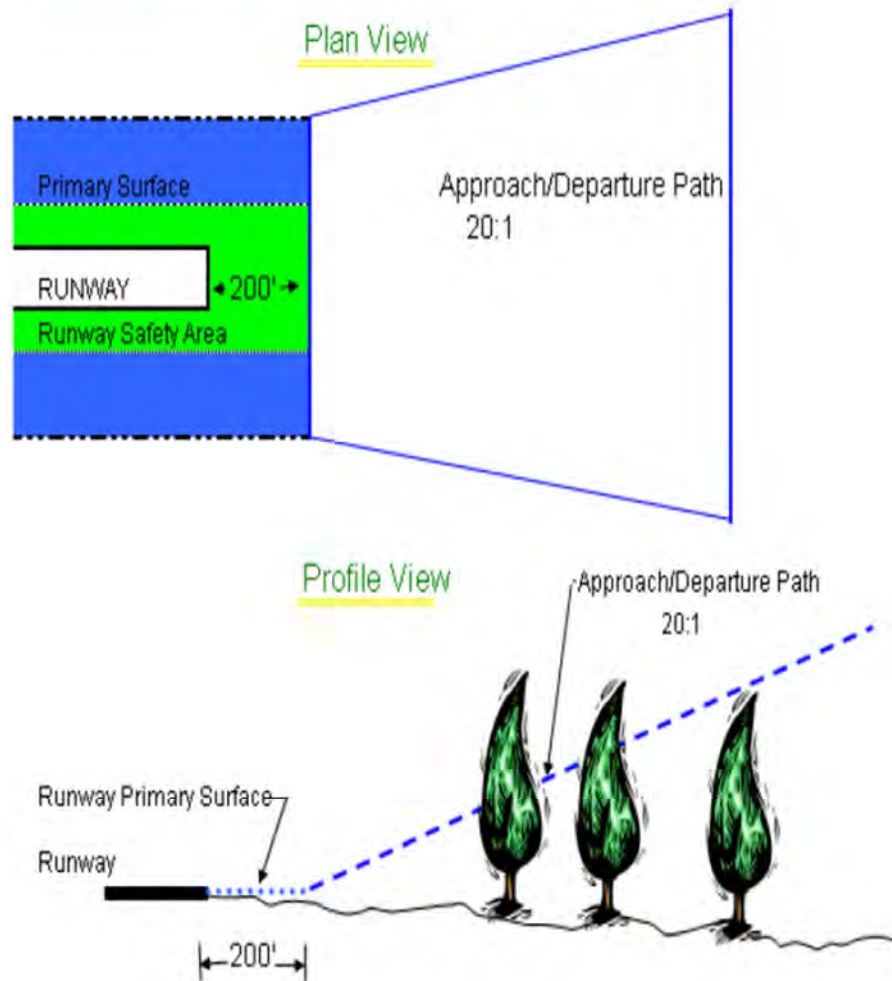
Additional Items



Ensure that maintenance is kept up on the drainage area.

APPENDIX 1

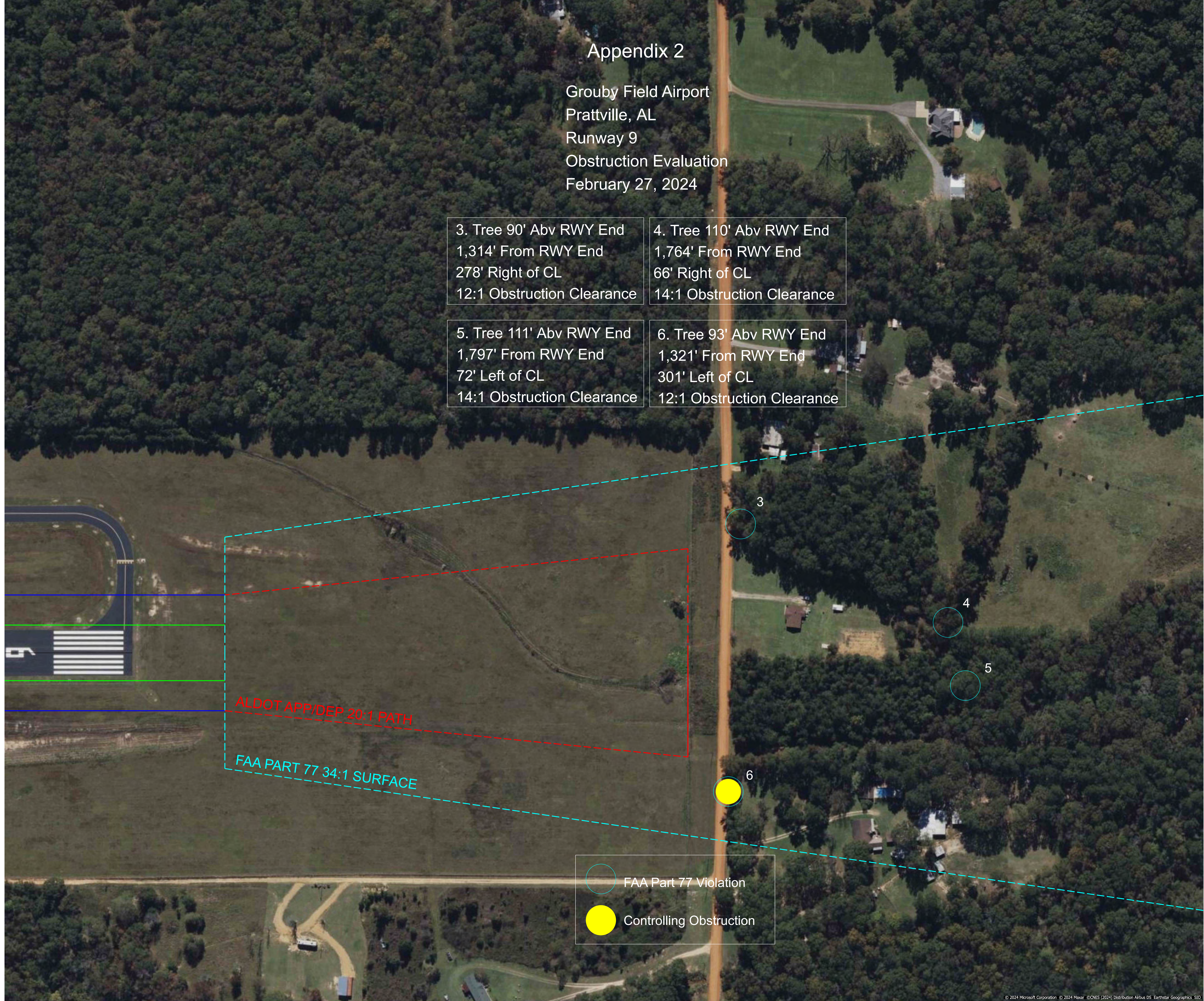
Approach and Departure Path Dimensions			
Inner Width	Outer Width	Length	Acreage
250 Feet	450 Feet	1,000 Feet	8.04 Acres
Primary Surface Dimensions			
250 Feet Wide Centered Along Runway Centerline			
Extending 200 Feet Past the Runway End			
Runway Safety Area Dimensions			
120 Feet Wide Centered Along Runway Centerline			
Extending 200 Feet Past the Runway End			



Appendix 2

Grouby Field Airport
Prattville, AL
Runway 9
Obstruction Evaluation
February 27, 2024

3. Tree 90' Abv RWY End 1,314' From RWY End 278' Right of CL 12:1 Obstruction Clearance	4. Tree 110' Abv RWY End 1,764' From RWY End 66' Right of CL 14:1 Obstruction Clearance
5. Tree 111' Abv RWY End 1,797' From RWY End 72' Left of CL 14:1 Obstruction Clearance	6. Tree 93' Abv RWY End 1,321' From RWY End 301' Left of CL 12:1 Obstruction Clearance



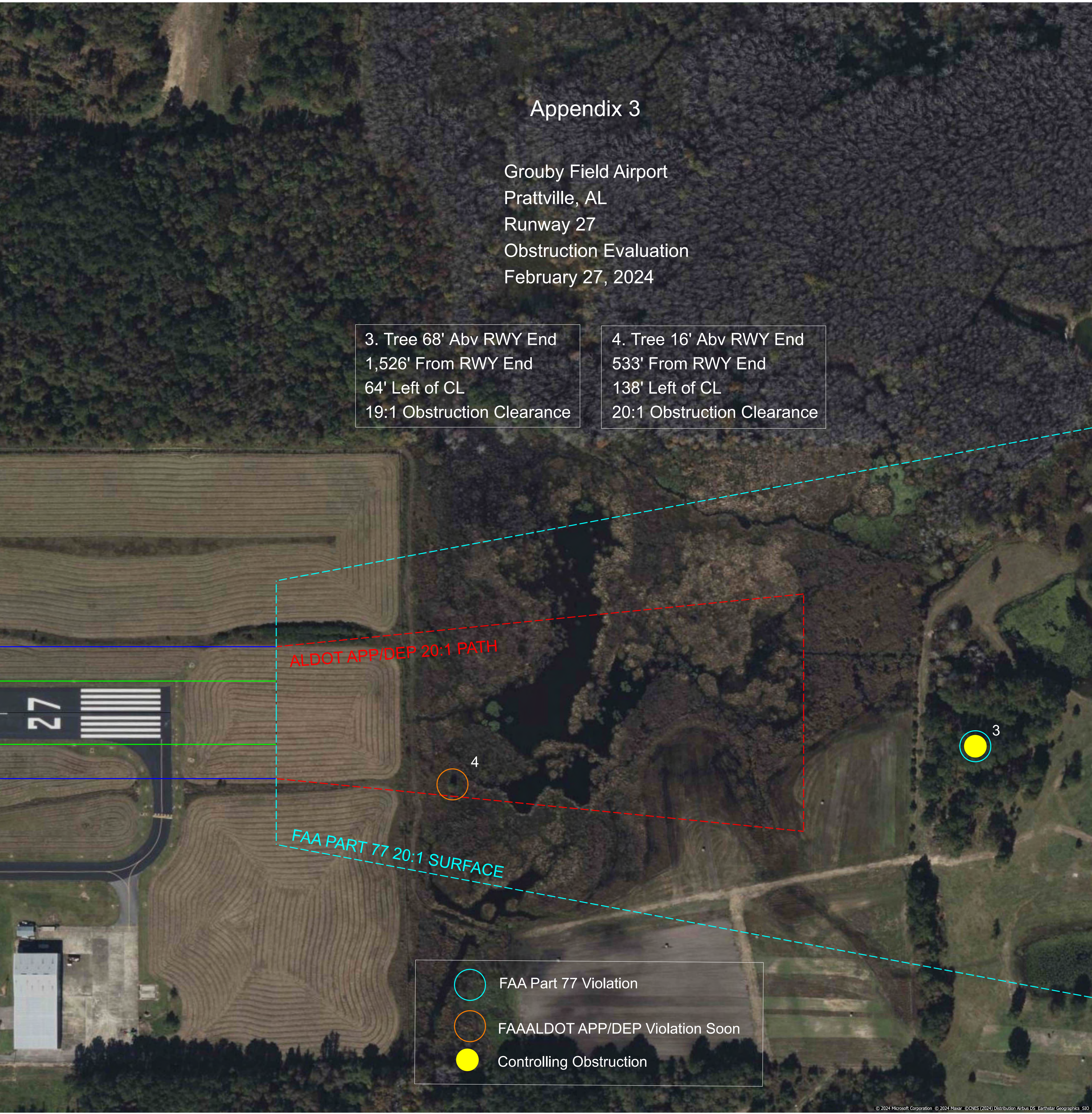
○ FAA Part 77 Violation
● Controlling Obstruction




Appendix 3

Grouby Field Airport
Prattville, AL
Runway 27
Obstruction Evaluation
February 27, 2024

3. Tree 68' Abv RWY End
1,526' From RWY End
64' Left of CL
19:1 Obstruction Clearance

4. Tree 16' Abv RWY End
533' From RWY End
138' Left of CL
20:1 Obstruction Clearance



-  FAA Part 77 Violation
-  FAAALDOT APP/DEP Violation Soon
-  Controlling Obstruction