



Kay Ivey  
GOVERNOR

**ALABAMA**  
**DEPARTMENT OF TRANSPORTATION**  
**AERONAUTICS BUREAU**  
**1409 COLISEUM BOULEVARD**  
**MONTGOMERY, ALABAMA 36130**  
PHONE (334) 242-6820  
FAX (334) 353-6540



John R. Cooper  
TRANSPORTATION DIRECTOR

March 5, 2024

The Honorable Jill Patterson Hicks  
Mayor of Roanoke  
P.O. Box 1270  
Roanoke, Alabama 36274

**Subject: Annual Inspection Report  
Roanoke Municipal Airport (7A5)**

Dear Mayor Hicks:

An inspection of the Roanoke Municipal Airport was conducted by personnel of the Alabama Department of Transportation Aeronautics Bureau on February 8, 2024. The purpose of the inspection was to update the information currently on file regarding the airport and to ascertain compliance with the rules and regulations of the Alabama Department of Transportation governing licensed public-use airports within the State of Alabama.

Attached you will find a copy of the Annual Inspection Report for the airport. As noted in the report, the airport meets all the requirements for the issuance of an operating license. However, there are several maintenance items detailed in the report that need to be addressed.

If you should have any questions concerning the inspection, please do not hesitate to contact Mr. Noah Sowell with the Aeronautics Bureau at (334) 242-6831.

Sincerely,

Frank Farmer  
Chief, Aeronautics Bureau

Copy: Mr. Lorn Whittaker, FAA/ADO  
Ms. Jennifer Harp, P.E., Garver  
Ms. Amanda Davis, City Clerk

**February 8, 2024**



**ROANOKE MUNICIPAL AIRPORT  
ROANOKE, ALABAMA**

## Alabama Department of Transportation Aeronautics Bureau—Annual Airport Inspection Report

In accordance with the provisions of the Code of Alabama 23-1-357, an inspection of the **Roanoke Municipal Airport** was conducted by **Mr. Noah Sowell and Mr. Caleb Nall** with the Alabama Department of Transportation Aeronautics Bureau on **February 8, 2024**.

The inspection was conducted on the airport under the provisions of the Administrative Code Chapter 450-9-1 for the following areas:

Aeronautics Administrative Code	Inspection Results	Corrective Action	Notes
<b>Approach &amp; Departure Paths</b> Administrative Code 450-9-1-.12 (1)	<i>In Compliance</i> <i>Maintenance</i>	Remove trees that penetrate the FAA Part 77 20:1 surface of Runway 12.	There are three trees that penetrate the FAA Part 77 20:1 surface of Runway 12. <b>See Appendix #2.</b>
<b>Primary Surface</b> Administrative Code 450-9-1-.12 (2)	<i>In Compliance</i> <i>Maintenance</i>	Fill areas where patches of ruts exist so that the ground inside the Primary Surface is level and smooth.	There are patches of ruts inside the Primary Surface off the north and south sides of the approach end of Runway 12.
<b>Runway Safety Area</b> Administrative Code 450-9-1-.12 (3)	<i>In Compliance</i> <i>Maintenance</i>	Fill ruts with compact dirt so that the terrain inside the Safety Area is smooth and even.	Both sets of threshold lights on the Runway 12 approach end have erosion/ruts around them.
<b>Airport Markings</b> Administrative Code 450-9-1-.12 (4)	<i>In Compliance</i>	N/A	N/A
<b>Wind Direction Indicator</b> Administrative Code 450-9-1-.12 (5)	<i>In Compliance</i>	N/A	N/A
<b>Airport Lighting</b> Administrative Code 450-9-1-.12 (6)	<i>In Compliance</i> <i>Maintenance</i>	Repair inoperable airfield lights.	There were three lights inoperable at the time of inspection. <b>See page 10.</b>
<b>Runway, Taxiway and Apron Conditions</b> Administrative Code 450-9-1-.12 (7)	<i>In Compliance</i>	N/A	N/A
<b>Fueling Area Requirements</b> Administrative Code 450-9-1-.12 (8)	<i>In Compliance</i>	N/A	There is no fueling area at this airport.
<b>Prohibited Activities</b> Administrative Code 450-9-1-.16	<i>In Compliance</i>	N/A	No evidence of prohibited activities were found.
Additional Items	<i>In Compliance</i>	N/A	N/A

### License Status— **Compliance**

The corrective actions that may be prescribed in this inspection report do not relieve the airport sponsor from compliance with any other Federal, State or local laws, ordinances or regulations that may be applicable. It is the responsibility of the airport sponsor to be aware of and obey all Federal, State or local laws, ordinances or regulations that may have a bearing on the corrective actions that may be specified in this report.

**Code of Alabama 23-1-357(a)**... a person or municipality may not operate an airport, restricted landing area, or other navigation facility without a license issued by this Department.



## Roanoke Municipal Airport

### Approach and Departure Paths—Runway 12

Administrative Code 450-9-1-.12(1)



**MAINTENANCE:** There were no obstructions in the ALDOT Approach/Departure Path of Runway 12. However, there are three trees that penetrate the FAA Part 77 Surface. **Please see Appendix #2.**

**Note:** Obstructions identified are representative and may not include all existing obstructions.

## Roanoke Municipal Airport

### Approach and Departure Paths—Runway 30

Administrative Code 450-9-1-.12(1)



There were no obstructions located inside the ALDOT Approach/Departure path for Runway 30.



## Roanoke Municipal Airport

### Primary Surface

Administrative Code 450-9-1-.12(2)



**MAINTENANCE**: Primary Surface **MEETS** state licensing standards. However, there are patches of ruts inside the Primary Surface off the north and south sides of the Runway 12 approach end. Please add dirt to these patches so that the terrain is even.



# Roanoke Municipal Airport

## Runway Safety Area

Administrative Code 450-9-1-.12(3)



**MAINTENANCE:** Runway Safety Area **MEETS** state licensing standards. However, there are ruts around **both sets** of threshold lights on the **Runway 12 approach end**. Please fill ruts with compact dirt so that the Safety Area is level and smooth.



# Roanoke Municipal Airport

## Airport Markings—Runway

Administrative Code 450-9-1-.12(4)



Runway markings are in **GOOD** condition.



## Roanoke Municipal Airport

### Airport Markings—Taxiway

Administrative Code 450-9-1-.12(4)



Taxiway markings are in **GOOD** condition.

# Roanoke Municipal Airport

## Airport Markings—Apron

Administrative Code 450-9-1-.12(4)



There are no apron markings at this airport.



## Roanoke Municipal Airport

### Wind Direction Indicator

Administrative Code 450-9-1-.12(5)



**MAINTENANCE:** Wind direction indicator is in **POOR** condition. Wind direction indicator is severely faded. Please replace with a new wind direction indicator as soon as possible.

## Roanoke Municipal Airport

### Airport Lighting

Administrative Code 450-9-1-.12(6)

An inspection of the lighting system had the following results:

<b>Runway Lights</b>	2 inoperable
<b>Taxiway Lights</b>	0 inoperable
<b>Threshold Lights</b>	1 inoperable
<b>PAPI</b>	0 inoperable
<b>REIL</b>	0 inoperable

**MEETS** State Licensing Standards for night-time operation.



## Roanoke Municipal Airport

### Runway, Taxiway and Apron Conditions—RUNWAY

Administrative Code 450-9-1-.12(7)



Runway surface is in **GOOD** condition.

## Roanoke Municipal Airport

### Runway, Taxiway and Apron Conditions—TAXIWAY

Administrative Code 450-9-1-.12(7)



Taxiway surface is in **GOOD** condition.



## Roanoke Municipal Airport

### Runway, Taxiway and Apron Conditions—APRON

Administrative Code 450-9-1-.12(7)



Apron surface is in **GOOD** condition.



# Roanoke Municipal Airport

## Fueling Area Requirements

Administrative Code 450-9-1-.12(8)



There is no fueling area at this airport.



# Roanoke Municipal Airport

## Prohibited Activities

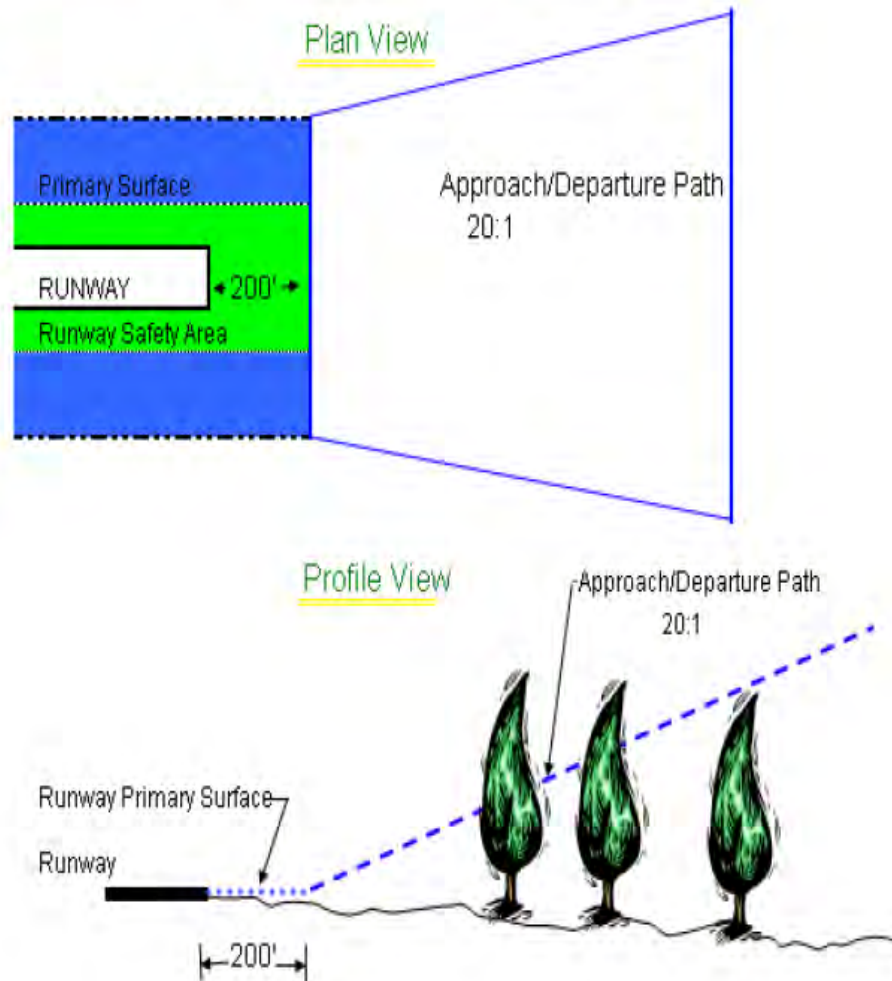
Administrative Code 450-9-1-.16



No prohibited activities were observed during this inspection. All gates were locked and airfield access was secure.

# APPENDIX 1

Approach and Departure Path Dimensions			
Inner Width	Outer Width	Length	Acreage
250 Feet	450 Feet	1,000 Feet	8.04 Acres
Primary Surface Dimensions			
250 Feet Wide Centered Along Runway Centerline			
Extending 200 Feet Past the Runway End			
Runway Safety Area Dimensions			
120 Feet Wide Centered Along Runway Centerline			
Extending 200 Feet Past the Runway End			





# APPENDIX 2

ROANOKE MUNICIPAL AIRPORT

ROANOKE, AL

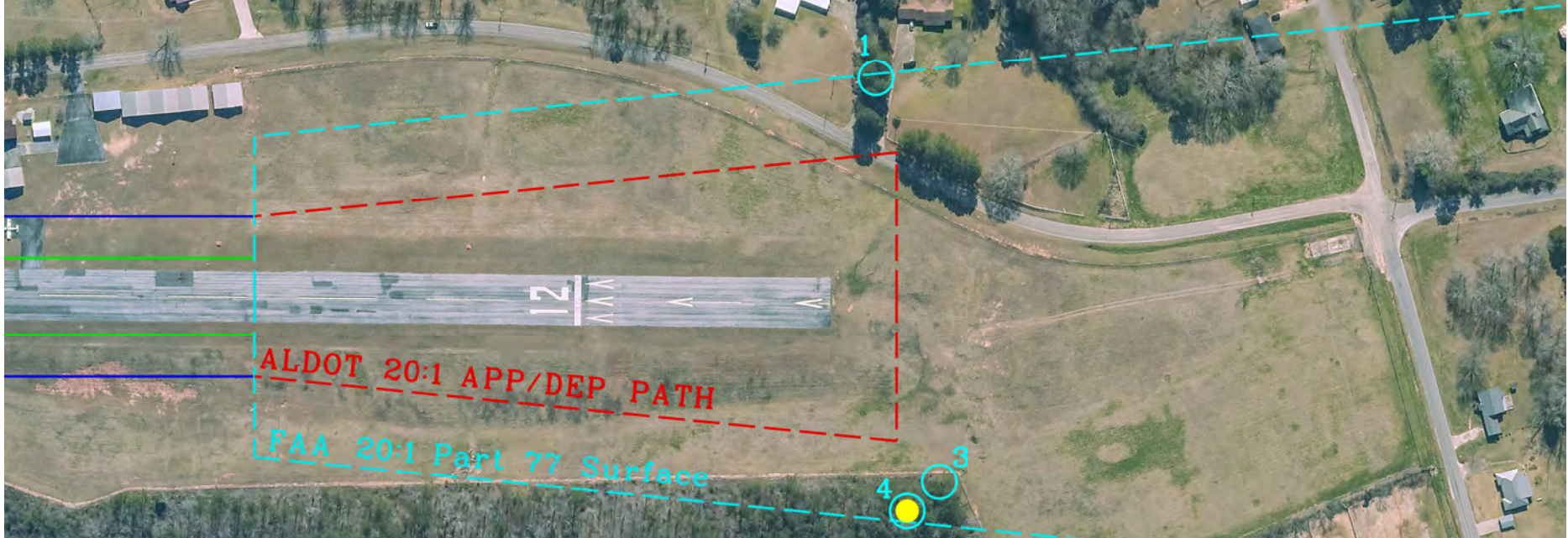
February 8, 2024

Runway 12 Obstruction Evaluation

1. Tree 66' Abv. Rwy  
1170' From Rwy End  
332' Right of CL  
14:1 Obst Evaluation

3. Tree 76' Abv. Rwy  
1267' From Rwy End  
294' Left of CL  
14:1 Obst Evaluation

4. Tree 102' Abv. Rwy  
1217' From Rwy End  
340' Left of CL  
9:1 Obst Evaluation



○ FAA Part 77 Violation  
● Controlling Obstruction



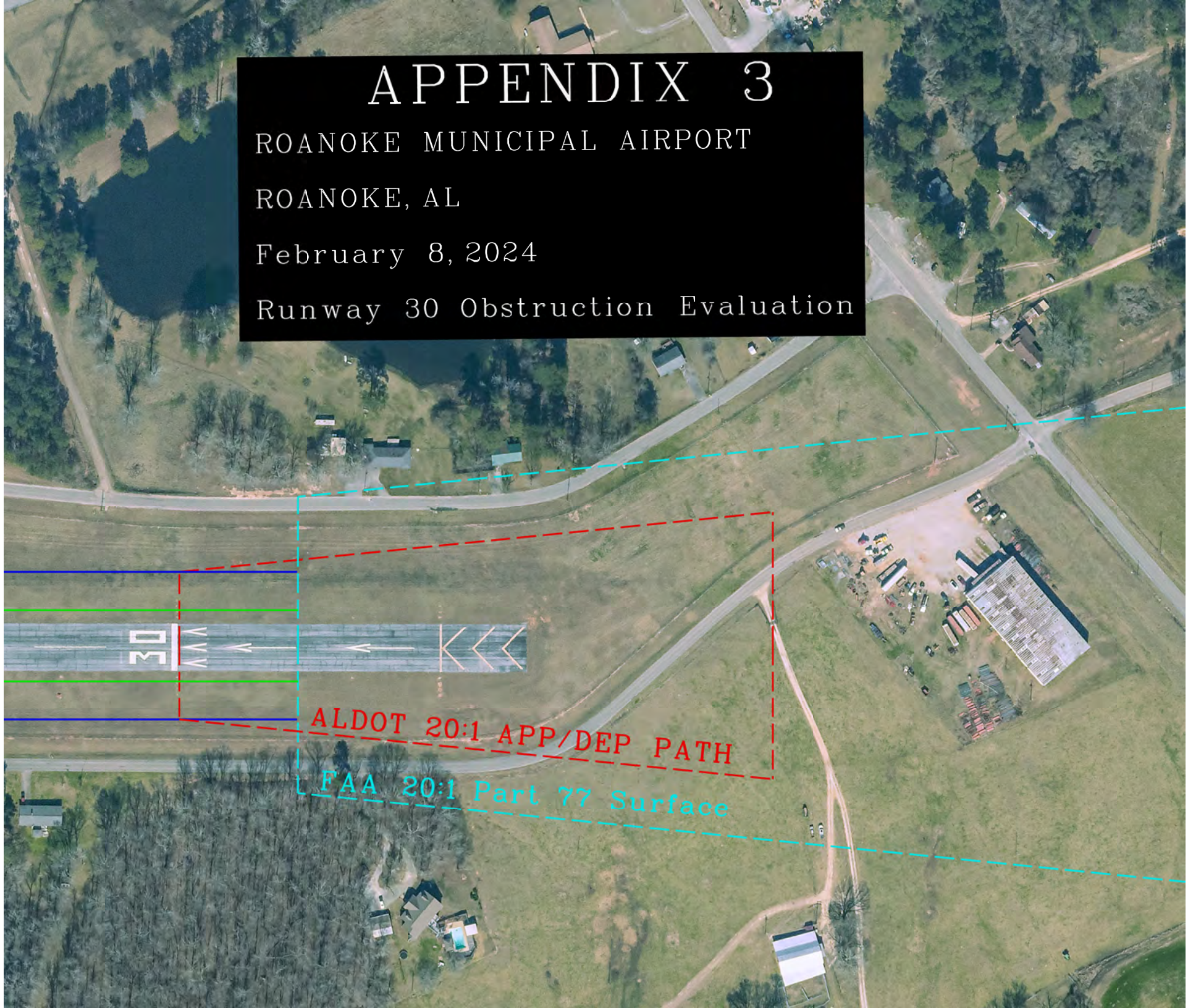
# APPENDIX 3

ROANOKE MUNICIPAL AIRPORT

ROANOKE, AL

February 8, 2024

Runway 30 Obstruction Evaluation



ALDOT 20:1 APP/DEP PATH

FAA 20:1 Part 77 Surface