



Kay Ivey
GOVERNOR

ALABAMA
DEPARTMENT OF TRANSPORTATION

AERONAUTICS BUREAU
1409 COLISEUM BOULEVARD
MONTGOMERY, ALABAMA 36110
PHONE (334) 242-6820
FAX (334) 353-6540
Internet: www.dot.state.al.us



John R. Cooper
TRANSPORTATION DIRECTOR

January 16, 2024

The Honorable Jim McCamy
Mayor, City of Scottsboro
316 South Broad Street
Scottsboro, Alabama 35768

Subject: Annual Inspection Report
Scottsboro Municipal Airport

Dear Mayor McCamy:

An inspection of the Scottsboro Municipal Airport was conducted by personnel of the Alabama Department of Transportation, Aeronautics Bureau on January 10, 2024. The purpose of the inspection was to update the information currently on file regarding the airport and to ascertain compliance with the rules and regulations of the Alabama Department of Transportation governing licensed public-use airports within the State of Alabama.

Attached you will find a copy of the Annual Inspection Report for the airport. As noted in the report, the airport **meets** all requirements for the issuance of a State Operating License.

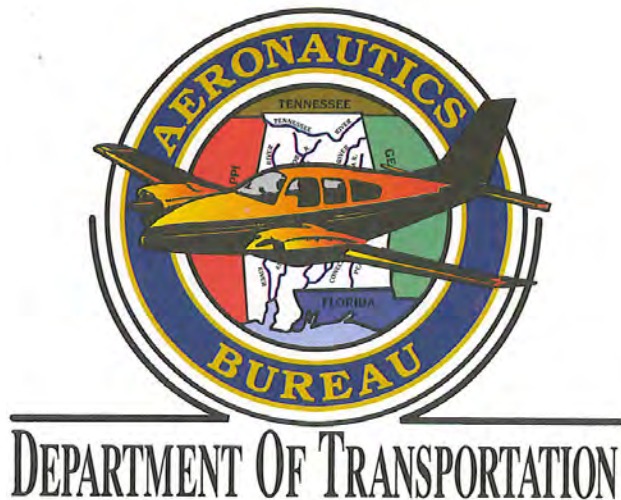
If you should have any questions concerning the inspection or corrective actions, please do not hesitate to contact Mr. Caleb Nall with the Aeronautics Bureau at (334) 312-6748.

Sincerely,

Frank Farmer
Chief, Aeronautics Bureau

Copy: Mr. Rans Black, FAA/ADO
Mr. Lorn Whittaker, FAA/ADO
Mr. J.B. Sandlin, Airport Manager
Mr. Jeff Redmill, Barge Design Solutions, Inc.

January 10, 2024



ANNUAL INSPECTION REPORT



**SCOTTSBORO MUNICIPAL AIRPORT
SCOTTSBORO, ALABAMA**

Alabama Department of Transportation Aeronautics Bureau—Annual Airport Inspection Report

In accordance with the provisions of the Code of Alabama 23-1-357, an inspection of the **Scottsboro Municipal Airport** was conducted by **Mr. Caleb Nall and Mr. Noah Sowell** with the Alabama Department of Transportation Aeronautics Bureau on **January 10, 2024**.

The inspection was conducted on the airport under the provisions of the Administrative Code Chapter 450-9-1 for the following areas:

Aeronautics Administrative Code	Inspection Results	Corrective Action	Notes
Approach & Departure Paths Administrative Code 450-9-1-.12 (1)	<i>In Compliance</i> <i>Maintenance</i>	Remove trees that penetrate the FAA Part 77 Approach Path.	Trees were observed in the FAA Part 77 34:1 Approach Path.
Primary Surface Administrative Code 450-9-1-.12 (2)	<i>In Compliance</i> <i>Maintenance</i>	N/A	N/A
Runway Safety Area Administrative Code 450-9-1-.12 (3)	<i>In Compliance</i> <i>Maintenance</i>	Bring grade up on RWY lights to ensure bases and non-frangible stakes are less than 3 inches in height.	Some runway light bases and non-frangible stakes exceeds 3 inches.
Airport Markings Administrative Code 450-9-1-.12 (4)	<i>In Compliance</i>	N/A	N/A
Wind Direction Indicator Administrative Code 450-9-1-.12 (5)	<i>In Compliance</i>	N/A	N/A
Airport Lighting Administrative Code 450-9-1-.12 (6)	<i>In Compliance</i> <i>Maintenance</i>	The non-operational lights need to be replaced.	There were 3 taxiway lights out and one threshold light out at the time of inspection. See page 10.
Runway, Taxiway and Apron Conditions Administrative Code 450-9-1-.12 (7)	<i>In Compliance</i> <i>Maintenance</i>	Clear all vegetation and FOD from apron	There are certain portions of the apron that have grass growing through the pavement and FOD was forming.
Fueling Area Requirements Administrative Code 450-9-1-.12 (8)	<i>In Compliance</i> <i>Maintenance</i>	Replace fading placard. Replace cracking bonding cable	There is a placard on the fuel tank that is fading and needs to be replaced. The bonding cable is beginning to crack and needs to be replaced
Prohibited Activities Administrative Code 450-9-1-.16	<i>In Compliance</i>	N/A	No evidence of prohibited activities were found.
Additional Items Administrative Code 450-9-1-.16	N/A	N/A	N/A

License Status—**COMPLIANCE**

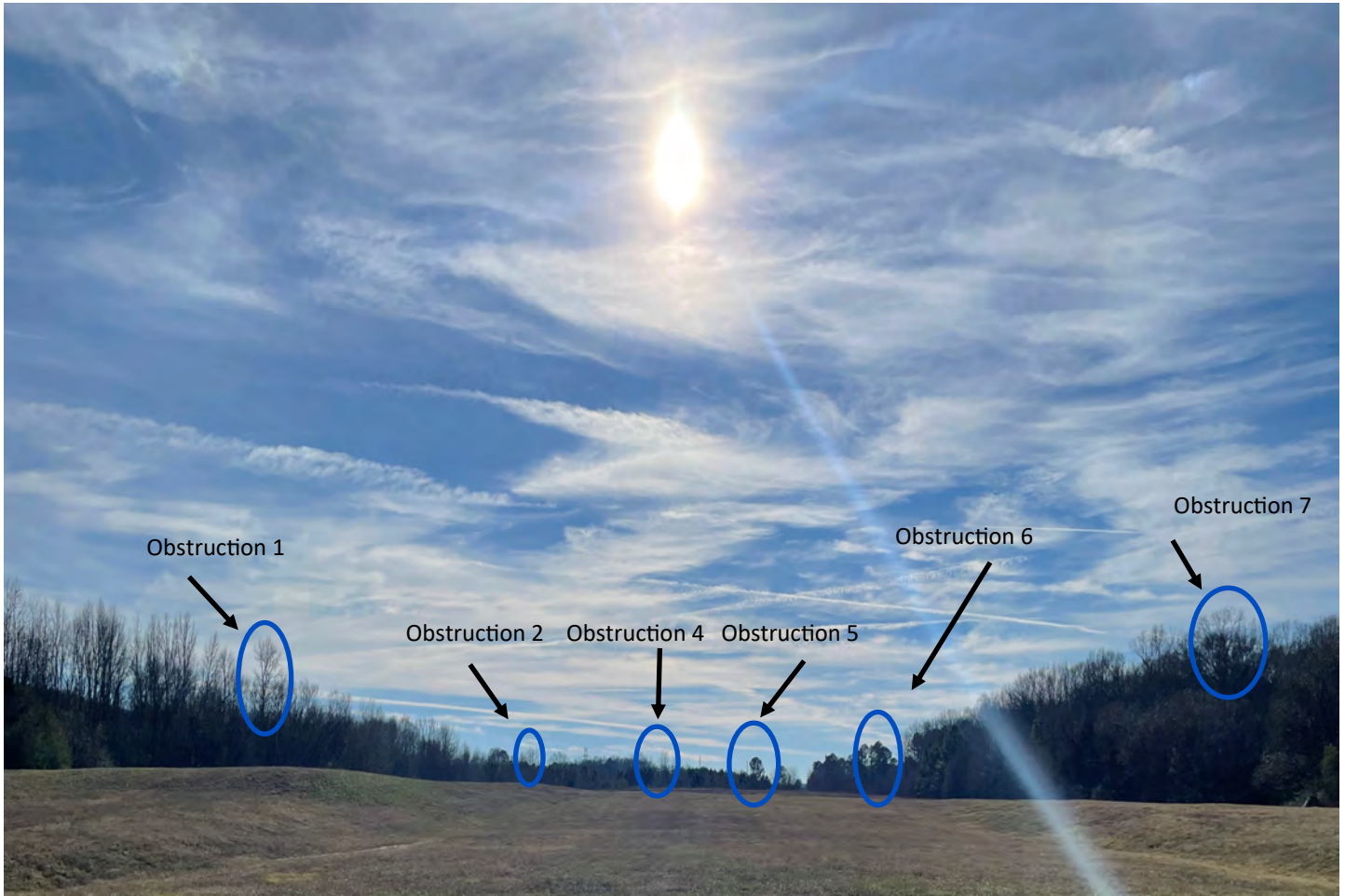
The corrective actions that may be prescribed in this inspection report do not relieve the airport sponsor from compliance with any other Federal, State or local laws, ordinances or regulations that may be applicable. It is the responsibility of the airport sponsor to be aware of and obey all Federal, State or local laws, ordinances or regulations that may have a bearing on the corrective actions that may be specified in this report.

Code of Alabama 23-1-357(a)... a person or municipality may not operate an airport, restricted landing area, or other navigation facility without a license issued by this Department.

Scottsboro Municipal Airport

Approach and Departure Paths—RUNWAY 4

Administrative Code 450-9-1-.12(1)



There were no obstructions in the ALDOT Approach and Departure path. The trees circled in blue penetrate the FAA Part 77 34:1 Approach Path. See Appendix 2 for more information.

Note: Obstructions identified are representative and may not include all existing obstructions.

Scottsboro Municipal Airport

Approach and Departure Paths—RUNWAY 22

Administrative Code 450-9-1-.12(1)



There were no obstructions in the ALDOT Approach and Departure path. The trees circled in blue penetrate the FAA Part 77 34:1 Approach Path. See Appendix 3 for more information.

Note: Obstructions identified are representative and may not include all existing obstructions.

Scottsboro Municipal Airport

Primary Surface

Administrative Code 450-9-1-.12(2)



Primary Surface **MEETS** state licensing standards.

Maintenance: The drop from the REIL pad to the ground should not exceed three inches.

Scottsboro Municipal Airport

Runway Safety Area

Administrative Code 450-9-1-.12(3)



Runway Safety Area **MEETS** state licensing standards.

Maintenance: The frangible coupling of the light should not exceed three inches above the ground.

Scottsboro Municipal Airport

Airport Markings—Runway

Administrative Code 450-9-1-.12(4)



Runway markings are in **GOOD** condition.

Scottsboro Municipal Airport

Airport Markings—Taxiway

Administrative Code 450-9-1-.12(4)



Taxiway markings are in **GOOD** condition.

Scottsboro Municipal Airport

Airport Markings—Apron

Administrative Code 450-9-1-.12(4)



Apron markings are in **FAIR** condition.

Scottsboro Municipal Airport

Wind Direction Indicator

Administrative Code 450-9-1-.12(5)



Wind direction indicator is in **FAIR** condition.

Scottsboro Municipal Airport

Airport Lighting

Administrative Code 450-9-1-.12(6)

An inspection of the lighting system had the following results:

Runway Lights	3 inoperable
Taxiway Lights	0 inoperable
Threshold Lights	1 inoperable
PAPI	0 inoperable
REIL	0 inoperable

MEETS State Licensing Standards for night-time operation.

Scottsboro Municipal Airport

Runway, Taxiway and Apron Conditions—RUNWAY

Administrative Code 450-9-1-.12(7)



Runway surface is in **GOOD** condition.

Scottsboro Municipal Airport

Runway, Taxiway and Apron Conditions—TAXIWAY

Administrative Code 450-9-1-.12(7)



Taxiway surface is in **GOOD** condition.

Scottsboro Municipal Airport

Runway, Taxiway and Apron Conditions—APRON

Administrative Code 450-9-1-.12(7)



Apron surface is in **FAIR** condition.

Maintenance: Apron should be cleaned of all vegetation and FOD.

Scottsboro Municipal Airport

Fueling Area Requirements

Administrative Code 450-9-1-.12(8)



Fueling area **MEETS** state licensing standards. However, the State of Alabama Department of Agriculture may have additional requirements for fueling systems that were not considered during this inspection.

Scottsboro Municipal Airport

Prohibited Activities

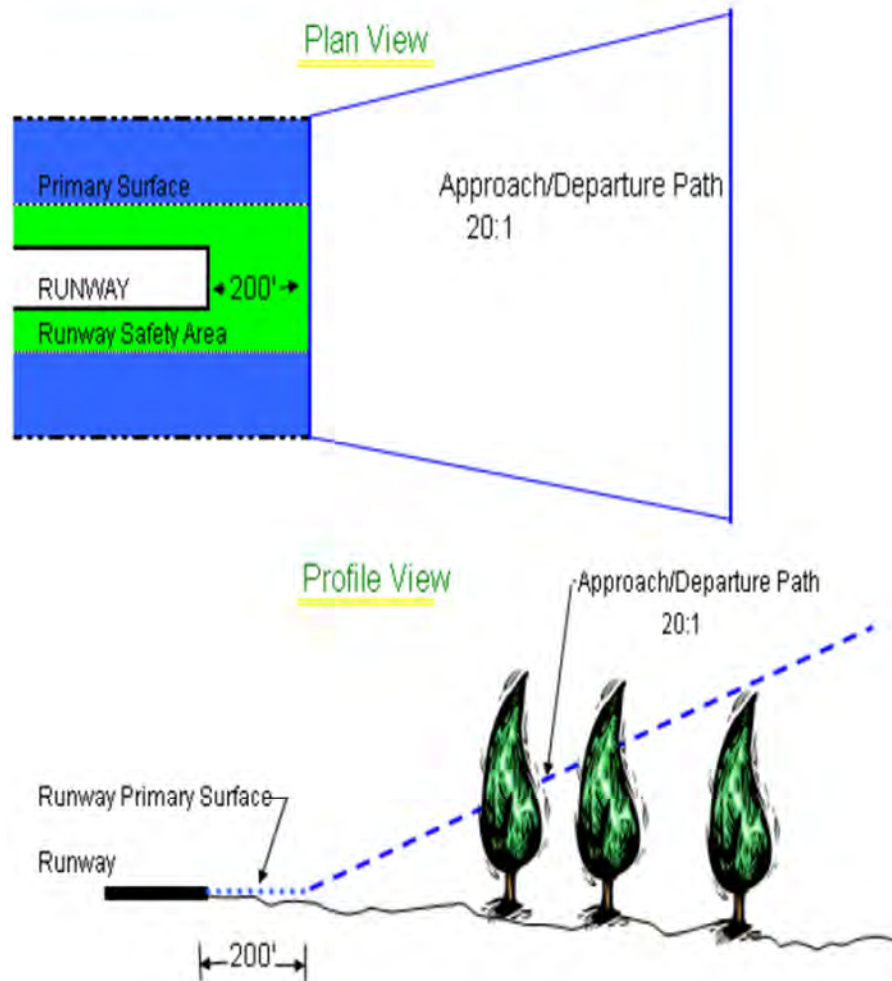
Administrative Code 450-9-1-.16



No prohibited activities were observed during this inspection.

APPENDIX 1

Approach and Departure Path Dimensions			
Inner Width	Outer Width	Length	Acreage
250 Feet	450 Feet	1,000 Feet	8.04 Acres
Primary Surface Dimensions			
250 Feet Wide Centered Along Runway Centerline			
Extending 200 Feet Past the Runway End			
Runway Safety Area Dimensions			
120 Feet Wide Centered Along Runway Centerline			
Extending 200 Feet Past the Runway End			



Appendix 2

Scottsboro Municipal Airport
Scottsboro, AL
Runway 4
Obstruction Evaluation
January 10, 2024

1. Tree 82' Abv RWY End
751' From RWY End
305' Right of CL
5:1 Obstruction Clearance

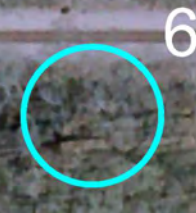
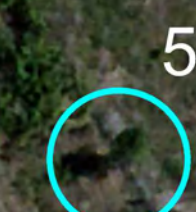
2. Tree 117' Abv RWY End
2,877' From RWY End
586' Right of CL
22:1 Obstruction Clearance

4. Tree 83' Abv RWY End
2,042' From RWY End
87' Right of CL
22:1 Obstruction Clearance

5. Tree 61' Abv RWY End
1,705' From RWY End
88' Left of CL
24:1 Obstruction Clearance

6. Tree 103' Abv RWY End
1,723' From RWY End
350' Left of CL
14:1 Obstruction Clearance

7. Tree 52' Abv RWY End
928' From RWY End
254' Left of CL
13:1 Obstruction Clearance



ALDOT 20:1 APP/DEP PATH

FAA PART 77 34:1 SURFACE

 FAA PART 77 VIOLATION

 Controlling Obstruction

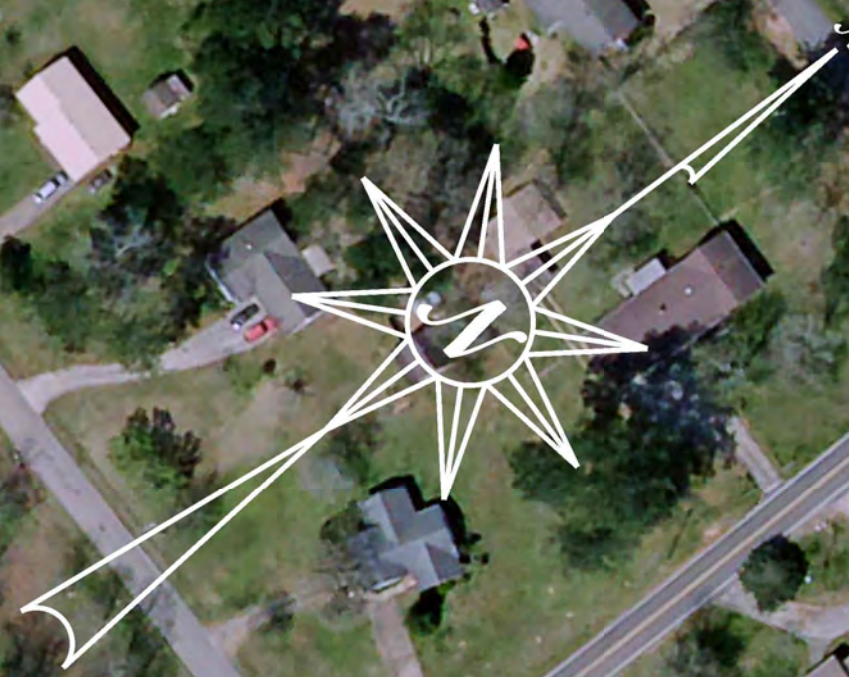
Appendix 3

Scottsboro Municipal Airport
Scottsboro, AL
Runway 22
Obstruction Evaluation
January 10, 2024

1. Tree 27' Abv RWY End
561' From Rwy End
253' Right of CL
19:1 Obstruction Clearance

3. Tree 93' Abv RWY End
1,106' From RWY End
339' Right of CL
11:1 Obstruction Clearance

4. Tree 79' Abv RWY End
1,530' From RWY End
45' Right of CL
19:1 Obstruction Clearance



○ FAA PART 77 VIOLATION
● Controlling Obstruction

