

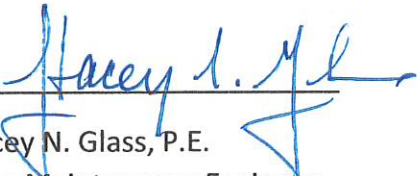
Standard Operating Procedure

Mobile Operation on a Multi-Lane Road

ALABAMA DEPARTMENT OF TRANSPORTATION

STANDARD OPERATING PROCEDURE FOR MOBILE OPERATIONS ON A MULTI-LANE ROAD

RECOMMENDED FOR APPROVAL:



Stacey N. Glass, P.E.
State Maintenance Engineer



Kyle M. Leverette, P.E.
State Construction Engineer

APPROVED:



Edward N. Austin, P.E.
Chief Engineer



George H. Conner, P.E.
Deputy Director, Operations

Date

Introduction

When a mobile operation on a multi-lane road is required, there **SHALL** be a minimum of one shadow vehicle behind the vehicle performing the mobile operation on a non-interstate route and there **SHALL** be a minimum of two shadow vehicles behind the vehicle performing the mobile operation on an interstate route.

When a mobile operation is being performed on either a conventional or expressway multi-lane road and the shadow vehicle is in the lane behind the operation, the shadow vehicle should be equipped with an arrow board and truck mounted attenuator and the vehicle performing the mobile operation should have an arrow board. If the shadow vehicle is on the shoulder, at a minimum the shadow vehicle and vehicle performing the mobile operation should have a truck mounted attenuator and arrow board.

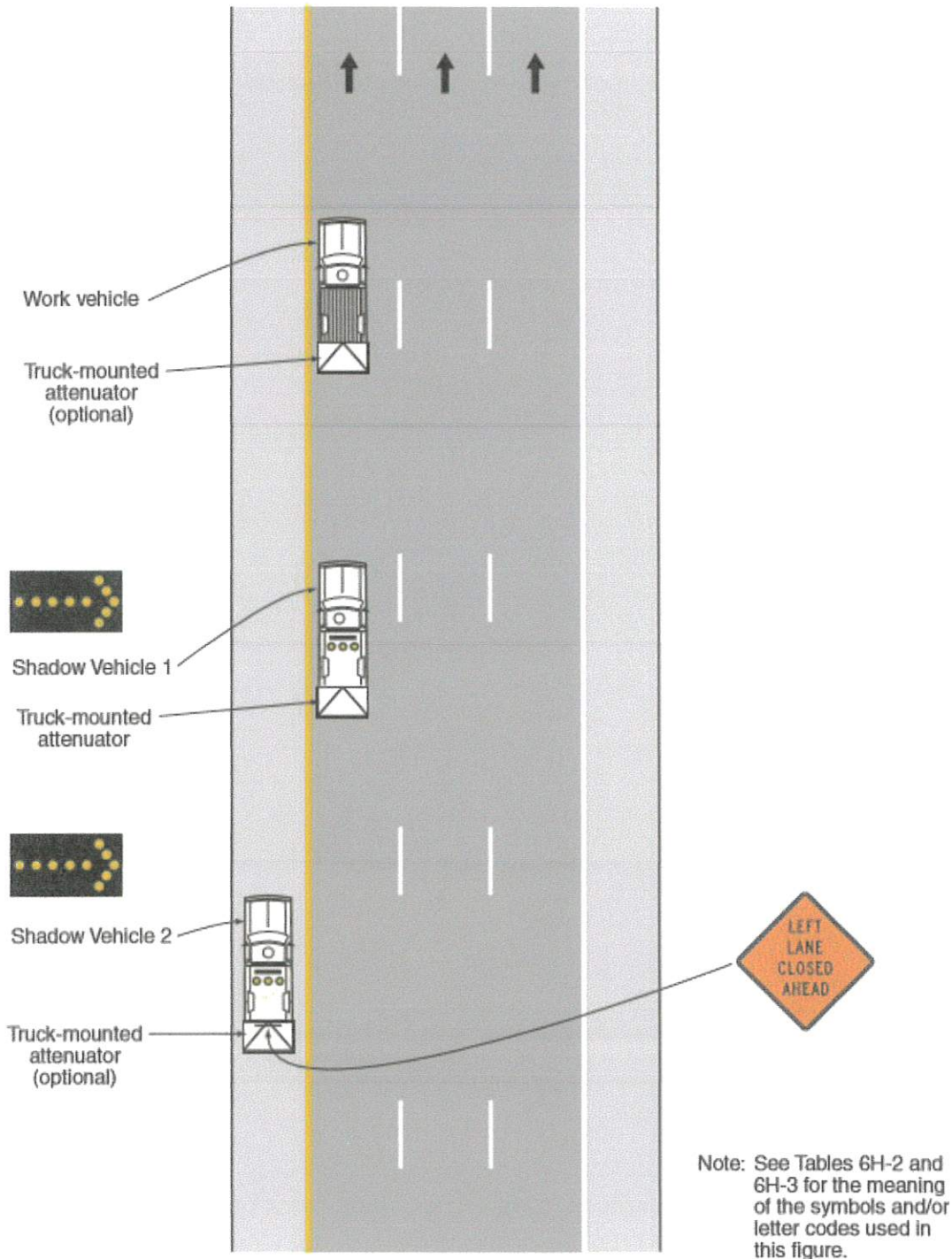
Refer to the Manual on Uniform Traffic Control Devices (MUTCD) to ensure all temporary traffic control devices that are required for a Mobile Operation on a Multi-Lane Road are deployed.

The following Standards shall be followed when performing a Mobile Operation on a Multi-Lane Road:

- 1. Arrow boards shall, at a minimum, be Type B, with a size of 60 x 30 inches.**
- 2. Vehicle-mounted signs shall be mounted in a manner such that they are not obscured by equipment or supplies. Sign legends on vehicle-mounted signs shall be covered or turned from view when work is not in progress.**
- 3. Shadow and work vehicles shall display high-intensity rotating, flashing, oscillating, or strobe lights.**
- 4. An arrow board shall be used when a freeway lane is closed. When more than one freeway lane is closed, a separate arrow board shall be used for each closed lane.**

Attached to this SOP are notes and a figure from the MUTCD for this type of operation. Please ensure any activity being performed, which may require a mobile operation on a multi-lane road, is following these standards, guidances, and options.

Figure 6H-35. Mobile Operation on a Multi-Lane Road (TA-35)



Typical Application 35

Notes for Figure 6H-35—Typical Application 35
Mobile Operation on a Multi-Lane Road

Standard:

1. Arrow boards shall, as a minimum, be Type B, with a size of 60 x 30 inches.
2. Vehicle-mounted signs shall be mounted in a manner such that they are not obscured by equipment or supplies. Sign legends on vehicle-mounted signs shall be covered or turned from view when work is not in progress.
3. Shadow and work vehicles shall display high-intensity rotating, flashing, oscillating, or strobe lights.
4. An arrow board shall be used when a freeway lane is closed. When more than one freeway lane is closed, a separate arrow board shall be used for each closed lane.

Guidance:

5. *Vehicles used for these operations should be made highly visible with appropriate equipment, such as flags, signs, or arrow boards.*
6. *Shadow Vehicle 1 should be equipped with an arrow board and truck-mounted attenuator.*
7. *Shadow Vehicle 2 should be equipped with an arrow board. An appropriate lane closure sign should be placed on Shadow Vehicle 2 so as not to obscure the arrow board.*
8. *Shadow Vehicle 2 should travel at a varying distance from the work operation so as to provide adequate sight distance for vehicular traffic approaching from the rear.*
9. *The spacing between the work vehicles and the shadow vehicles, and between each shadow vehicle should be minimized to deter road users from driving in between.*
10. *Work should normally be accomplished during off-peak hours.*
11. *When the work vehicle occupies an interior lane (a lane other than the far right or far left) of a directional roadway having a right-hand shoulder 10 feet or more in width, Shadow Vehicle 2 should drive the right-hand shoulder with a sign indicating that work is taking place in the interior lane.*

Option:

12. A truck-mounted attenuator may be used on Shadow Vehicle 2.
13. On high-speed roadways, a third shadow vehicle (not shown) may be used with Shadow Vehicle 1 in the closed lane, Shadow Vehicle 2 straddling the edge line, and Shadow Vehicle 3 on the shoulder.
14. Where adequate shoulder width is not available, Shadow Vehicle 3 may also straddle the edge line.