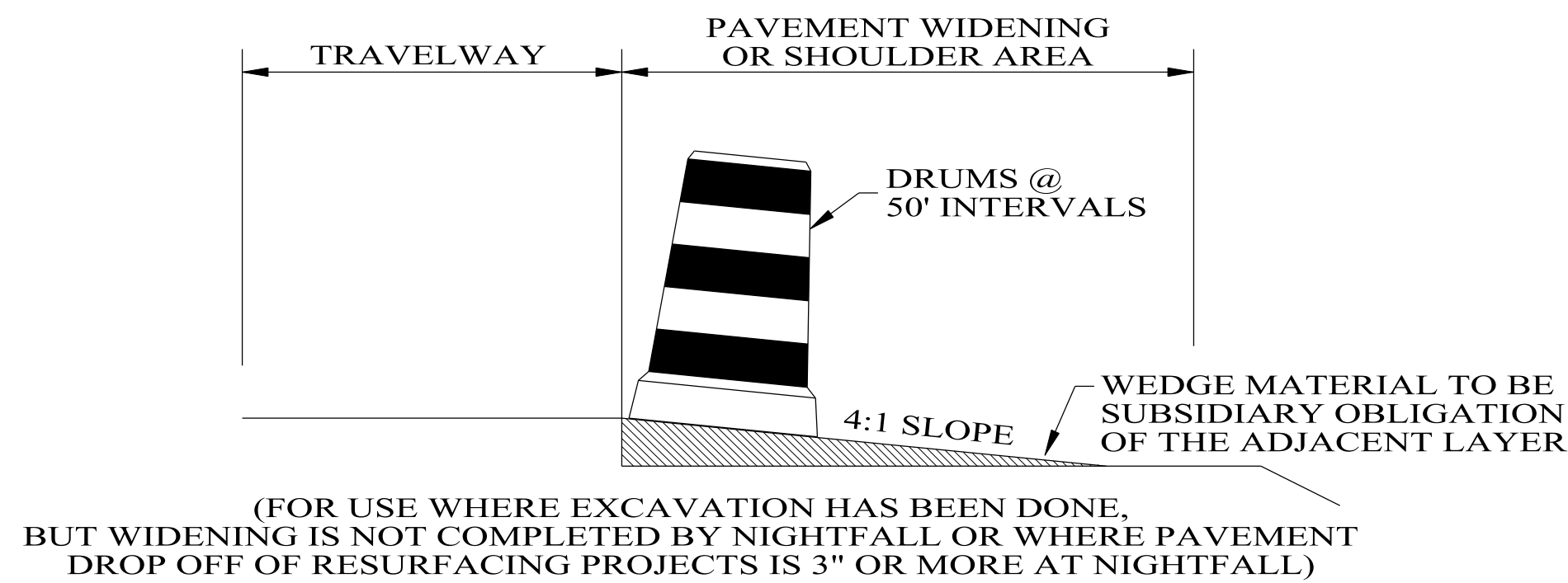


# TEMPORARY TRAFFIC CONTROL PLAN SHEET

REFERENCE PROJECT NO	FISCAL YEAR	SHEET NO

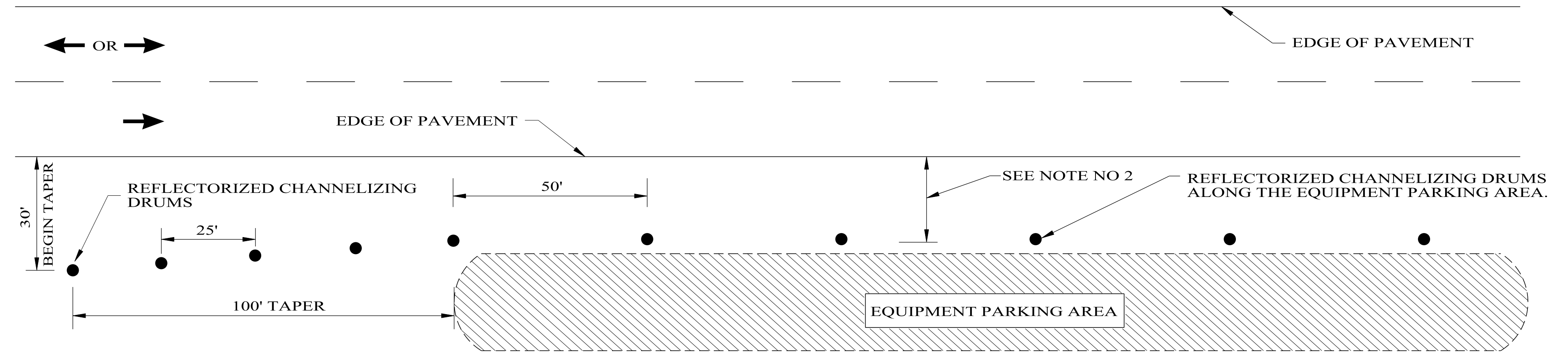


(FOR USE WHERE EXCAVATION HAS BEEN DONE, BUT WIDENING IS NOT COMPLETED BY NIGHTFALL OR WHERE PAVEMENT DROP OFF OF RESURFACING PROJECTS IS 3" OR MORE AT NIGHTFALL)

### TYPICAL FOR DROP-OFF AT EDGE OF PAVEMENT

NOTE:  
THE CONTRACTOR IS TO CONSTRUCT A WEDGE OF UNCLASSIFIED EXCAVATION OR CRUSHED AGGREGATE BASE. THE COST OF PLACING AND REMOVAL SHALL BE A SUBSIDIARY OBLIGATION OF THE ADJACENT LAYER.

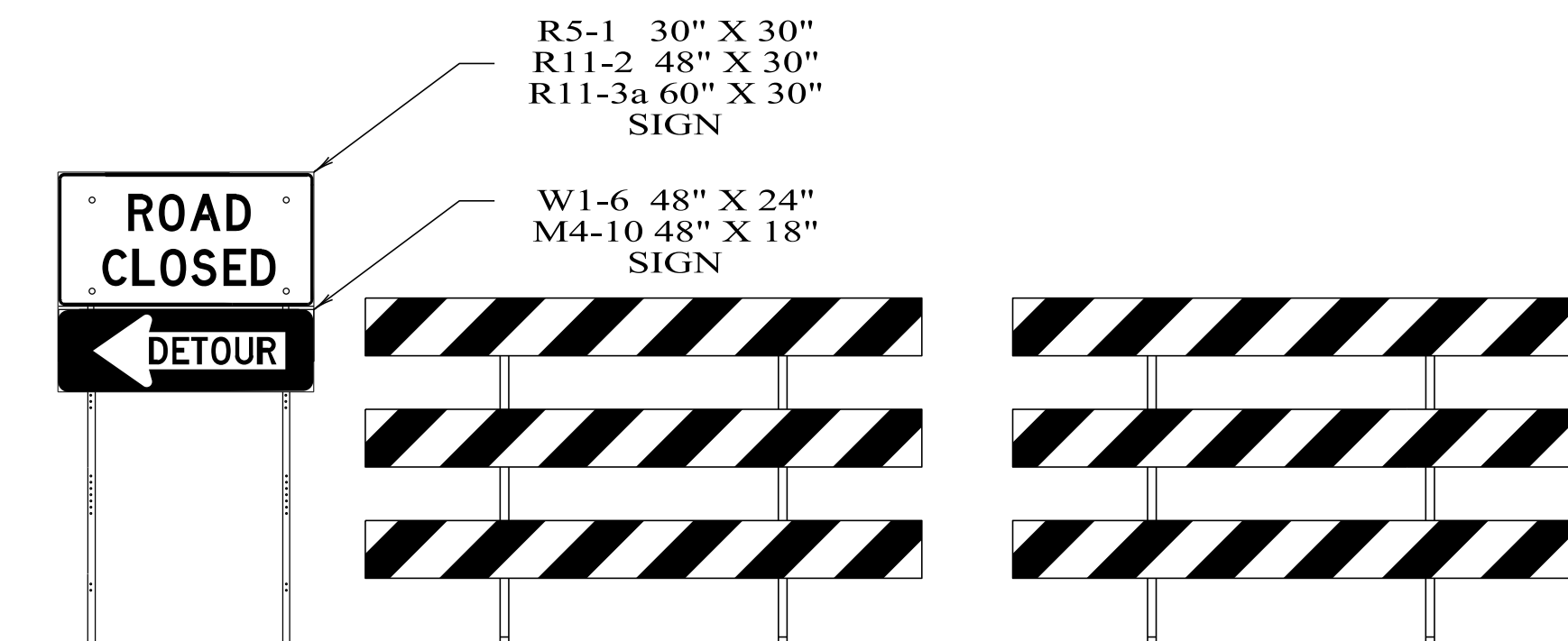
CHANNELIZING DRUMS SHALL BE PLACED AT 50 FT INTERVALS.



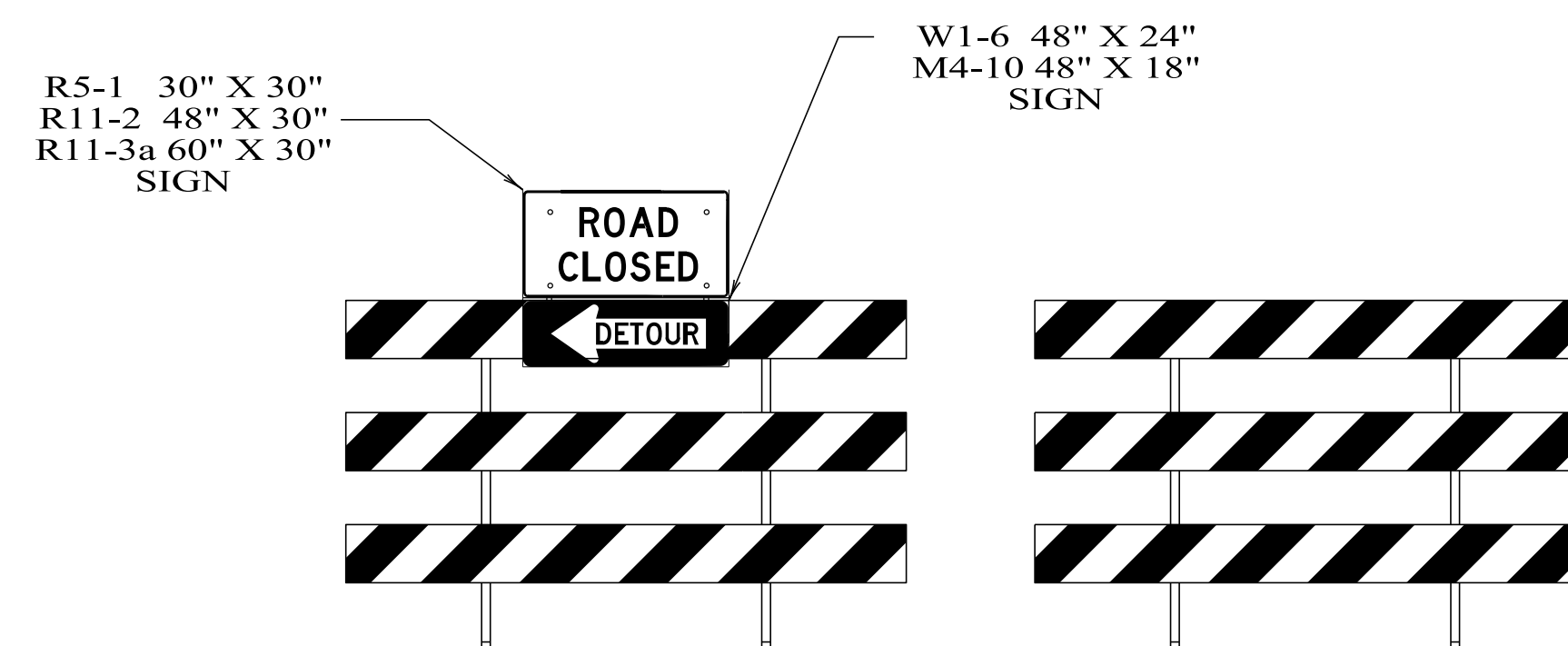
### NOTES:

- SEE ALDOT'S GENERAL TRAFFIC CONTROL PLAN NOTE NO. 702.
- DRUMS TO BE AS FAR AS PRACTICAL FROM EDGE OF PAVEMENT, MINIMUM DESIRABLE DISTANCE IS 15 FEET FOR FREEWAY TYPE FACILITIES AND 10 FEET FOR OTHER FACILITIES. FOR UNUSUAL CONDITIONS, SUCH AS SPECIAL EQUIPMENT OR LIMITED AVAILABLE SPACE, DIMENSIONS LESS THAN DESIRABLE SHALL BE AS DIRECTED BY THE ENGINEER.
- ALL DEVICES TO BE FURNISHED BY THE CONTRACTOR WITHOUT COST TO THE ALDOT.

### DELINEATING DETAIL FOR EQUIPMENT PARKING OR STORING AREA



### DETAILS FOR TYPICAL PLACEMENT OF TYPE III BARRICADES INSIDE OF CLEAR ZONE

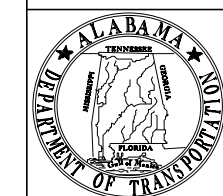


### DETAILS FOR TYPICAL PLACEMENT OF TYPE III BARRICADES OUTSIDE OF CLEAR ZONE

### NOTES

- SLOPE OF STRIPES ON BARRICADES SHALL BE IN ACCORDANCE WITH SECTION 6F.68 OF THE MUTCD AND DRAWING B-107-2.
- IF SIGNS ARE REQUIRED TO BE USED IN CONJUNCTION WITH TYPE III BARRICADES TO BE PLACED INSIDE THE CLEAR ZONE, THEY SHALL BE POST MOUNTED TO THE SIDE OF THE BARRICADES AS SHOWN.
- IF ROAD CLOSED OR DETOUR SIGNS ARE REQUIRED TO BE USED WITH TYPE III BARRICADES TO BE PLACED OUTSIDE THE CLEAR ZONE, THEY SHALL BE PLACED ON THE TOP OF THE BARRICADES NEAREST THE DETOUR.

NOT TO SCALE



ALABAMA DEPARTMENT OF TRANSPORTATION  
1409 COLISEUM BOULEVARD  
MONTGOMERY, AL 36130-3050

THIS DRAWING REPRESENTS DESIGNS PREPARED FOR USE BY THE ALABAMA DEPARTMENT OF TRANSPORTATION AND IS NOT TO BE COPIED, REPRODUCED, ALTERED, OR USED BY ANYONE, OR ANY ORGANIZATION, WITHOUT THE EXPRESSED WRITTEN CONSENT OF THE ALABAMA DEPARTMENT OF TRANSPORTATION REPRESENTATIVE AUTHORIZED TO APPROVE THIS USE. ANYONE MAKING UNAUTHORIZED USE OF THIS DRAWING MAY BE PROSECUTED TO THE FULLEST EXTENT OF THE LAW.

REVISIONS:  
1. Corrected text overlap on 12-8-2021 by D.J.W.

Bureau Std Engr: D.J.W.  
DRAWN BY:  
DATE DRAWN:  
REVISED DATE: 12-8-2021

DESIGN BUREAU SPECIAL DRAWING  
STANDARD DETAILS FOR TRAFFIC CONTROL PLANS

--SPECIFICATIONS-- CURRENT ALABAMA DEPARTMENT OF TRANSPORTATION	
SPECIAL DRAWING NO	INDEX NO
SPECIAL PROJECT DETAIL	2001