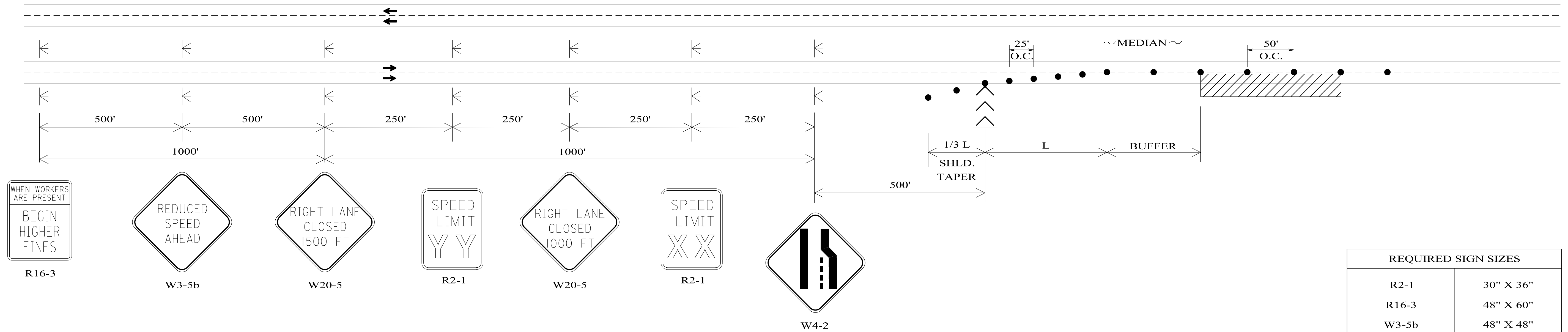


# TEMPORARY TRAFFIC CONTROL PLAN SHEET

REFERENCE PROJECT NO	FISCAL YEAR	SHEET NO

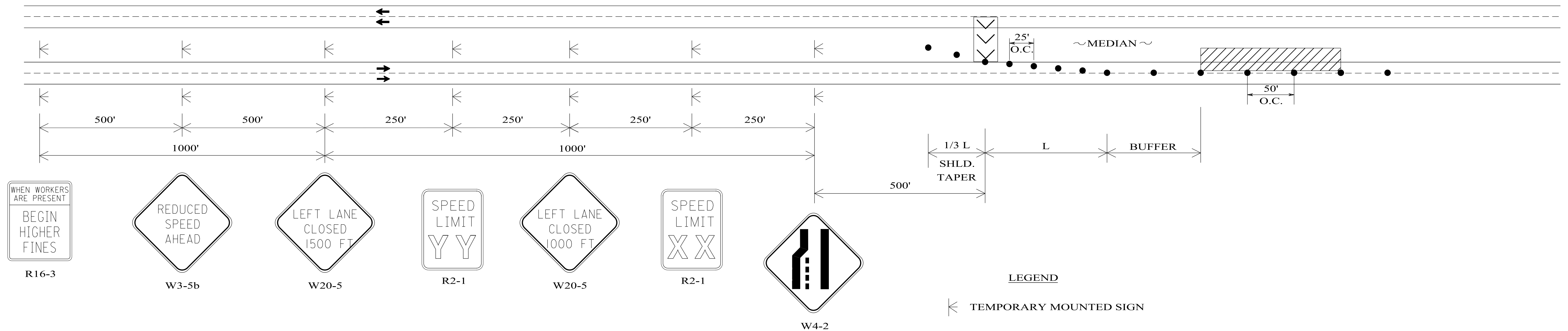
## TYPICAL SCHEME FOR RIGHT LANE CLOSURE



REQUIRED SIGN SIZES	
R2-1	30" X 36"
R16-3	48" X 60"
W3-5b	48" X 48"
W4-2	48" X 48"
W20-5	48" X 48"

THE SIGN SIZES SHOWN ON THIS SHEET SHALL SUPERCEDE THOSE SHOWN ON THE STANDARD HIGHWAY SIGNS DRAWINGS UNLESS OTHERWISE APPROVED BY THE ENGINEER.

## TYPICAL SCHEME FOR LEFT LANE CLOSURE



- LEGEND**
- ◀ TEMPORARY MOUNTED SIGN
  - CHANNELIZING DRUM
  - ▨ WORK AREA
  - ⏏ PORTABLE SEQUENTIAL ARROW AND CHEVRON SIGN UNIT

### GENERAL NOTES

- ALL SIGNS SHALL BE TEMPORARY MOUNTED AS SHOWN, UNLESS THE WORK PERIOD EXCEEDS FOUR (4) DAYS. IN SUCH CASES, THE SIGNS SHALL BE POST MOUNTED.
- SIGN (XX) SHALL SHOW THE SPEED IN THE WORK ZONE. SIGN (YY) SHALL BE USED IF SPEED REDUCTION REQUIRES TWO SIGNS.