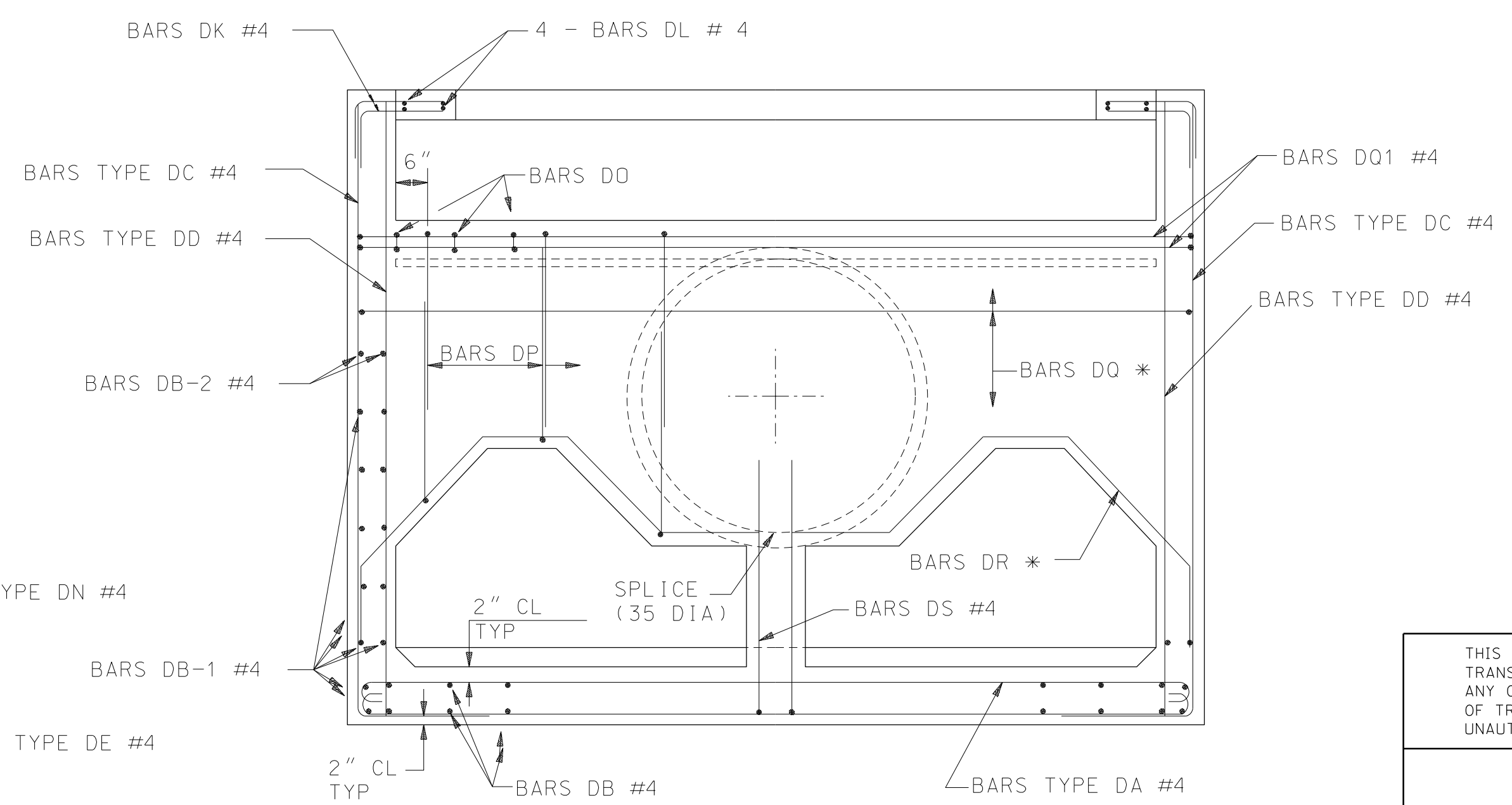
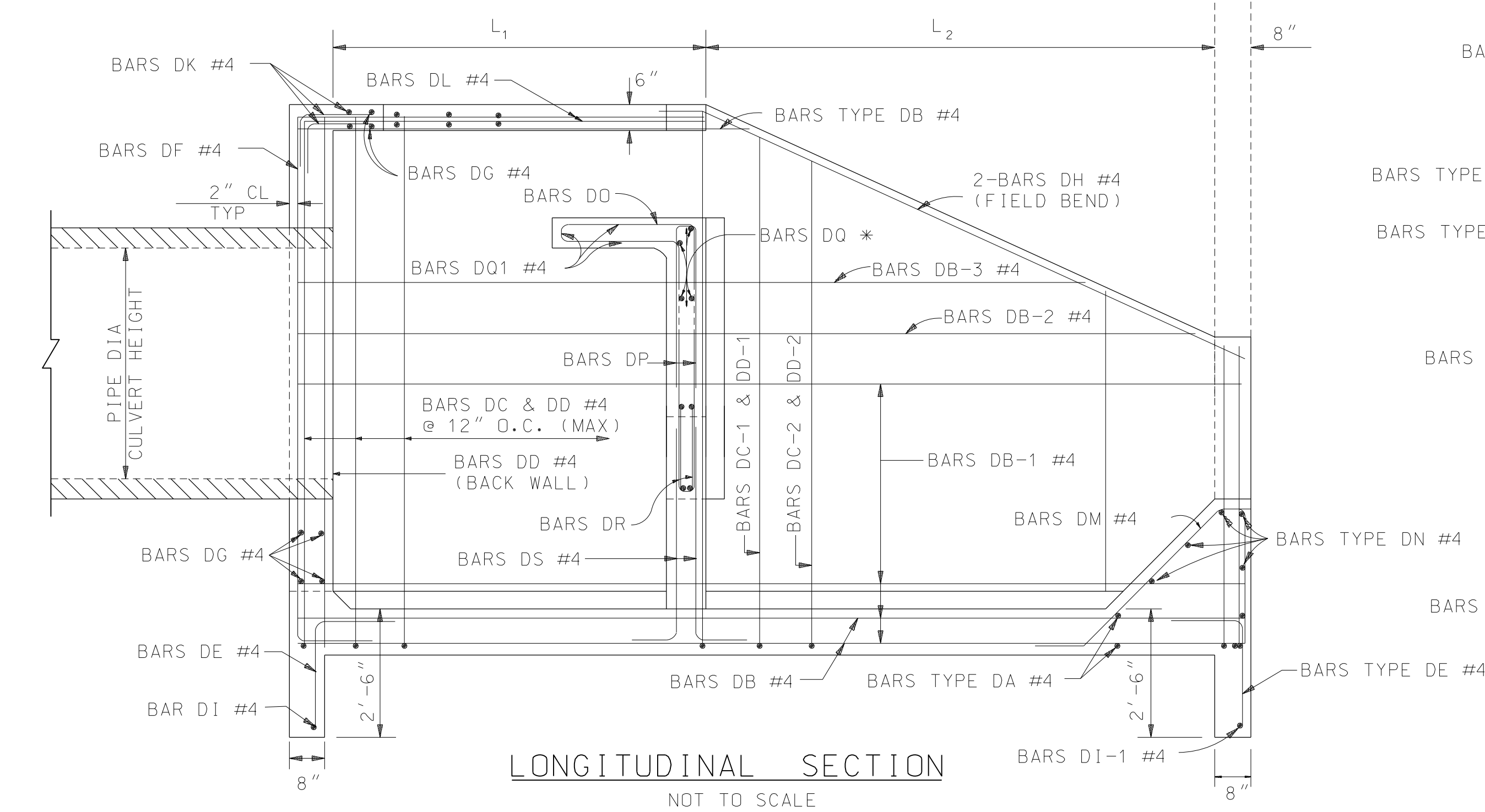
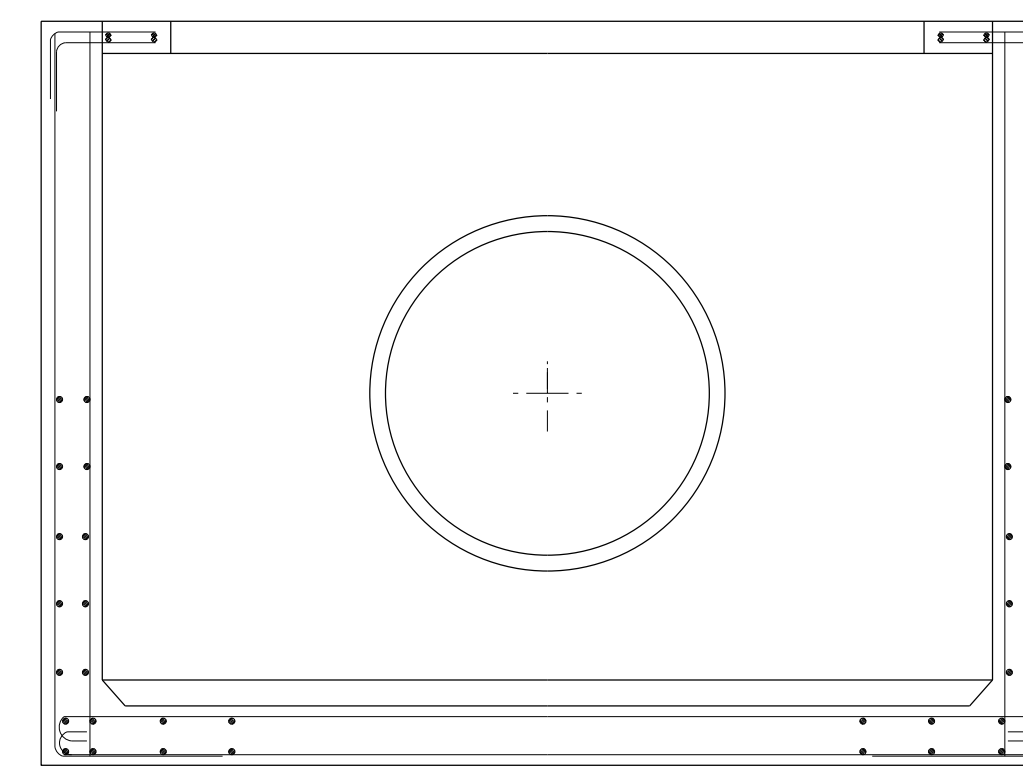


NOTE : NOT ALL REINFORCING BARS ARE SHOWN FOR CLARITY, SEE SHEET 3 OF 3 FOR THE TOTAL NUMBER OF BARS FOR EACH BASIN TYPE.



SIZE AND SPACING		
TYPE	BARS DQ *	BARS DR *
1	#4 @ 12" O.C.	#4 @ 12" O.C.
2	#4 @ 12" O.C.	#4 @ 12" O.C.
3	#5 @ 1'-2" O.C.	#5 @ 12" O.C.
4	#5 @ 10" O.C.	#5 @ 12" O.C.
5	#5 @ 9" O.C.	#5 @ 12" O.C.
6	#5 @ 7" O.C.	#5 @ 12" O.C.
7	#5 @ 6" O.C.	#5 @ 12" O.C.
8	#6 @ 6" O.C.	#6 @ 12" O.C.
00	#4 @ 12" O.C.	#4 @ 12" O.C.

--SPECIFICATIONS--  
CURRENT ALABAMA DEPARTMENT OF TRANSPORTATION

THIS DRAWING REPRESENTS DESIGNS PREPARED FOR USE BY THE ALABAMA DEPARTMENT OF TRANSPORTATION AND IS NOT TO BE COPIED, REPRODUCED, ALTERED, OR USED BY ANYONE, OR ANY ORGANIZATION, WITHOUT THE EXPRESSED WRITTEN CONSENT OF THE ALABAMA DEPARTMENT OF TRANSPORTATION REPRESENTATIVE AUTHORIZED TO APPROVE THIS USE. ANYONE MAKING UNAUTHORIZED USE OF THIS DRAWING MAY BE PROSECUTED TO THE FULLEST EXTENT OF THE LAW.

REVISIONS



DESIGN BUREAU SPECIAL DRAWING

STILLING BASINS

SPECIAL PROJECT DETAIL  
(SHEET 2 OF 3)

INDEX NO

Bureau Std Engr : J.V.S.  
DRAWN BY: R.T. DATE DRAWN: 11-21-94

NOT TO SCALE