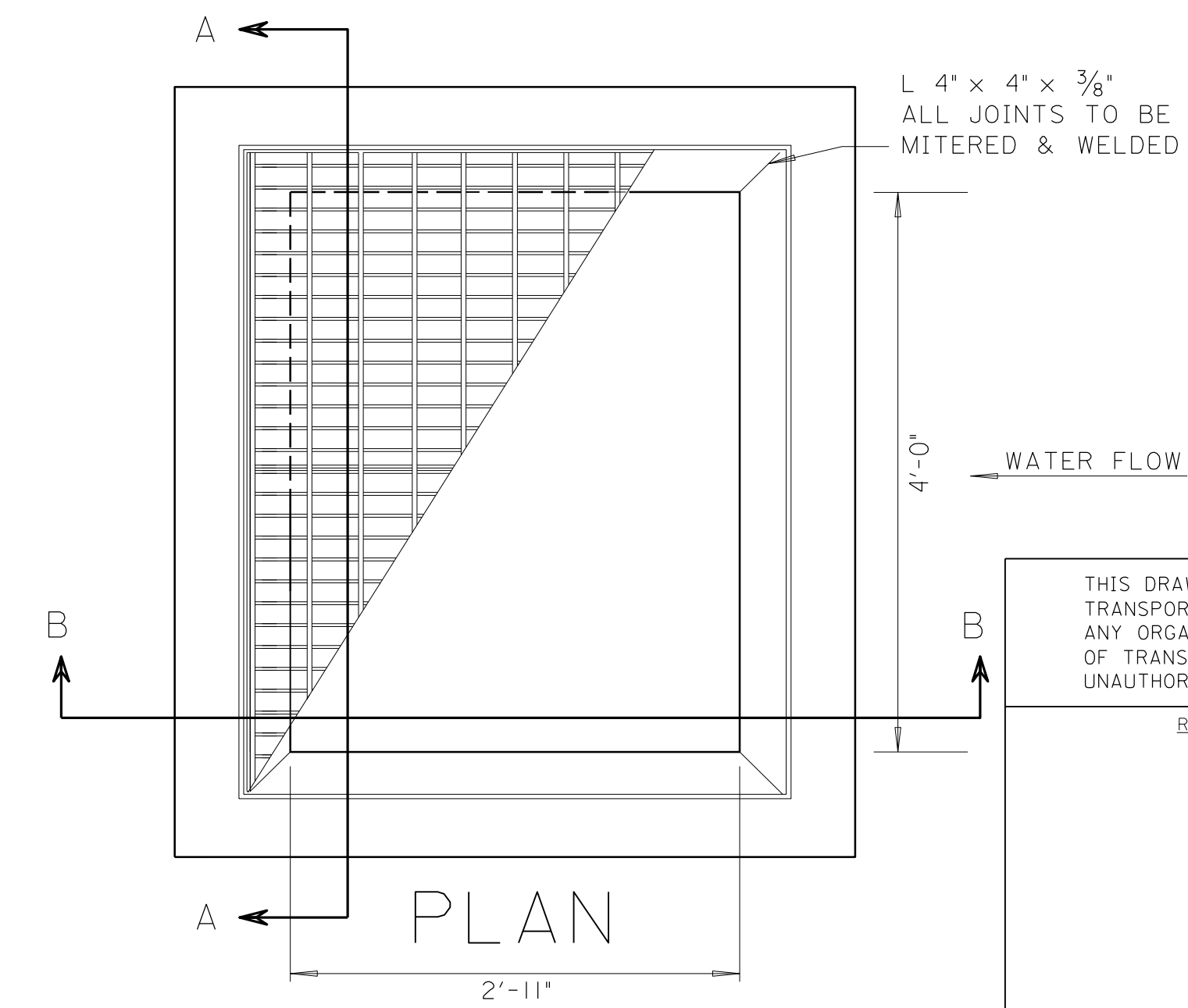
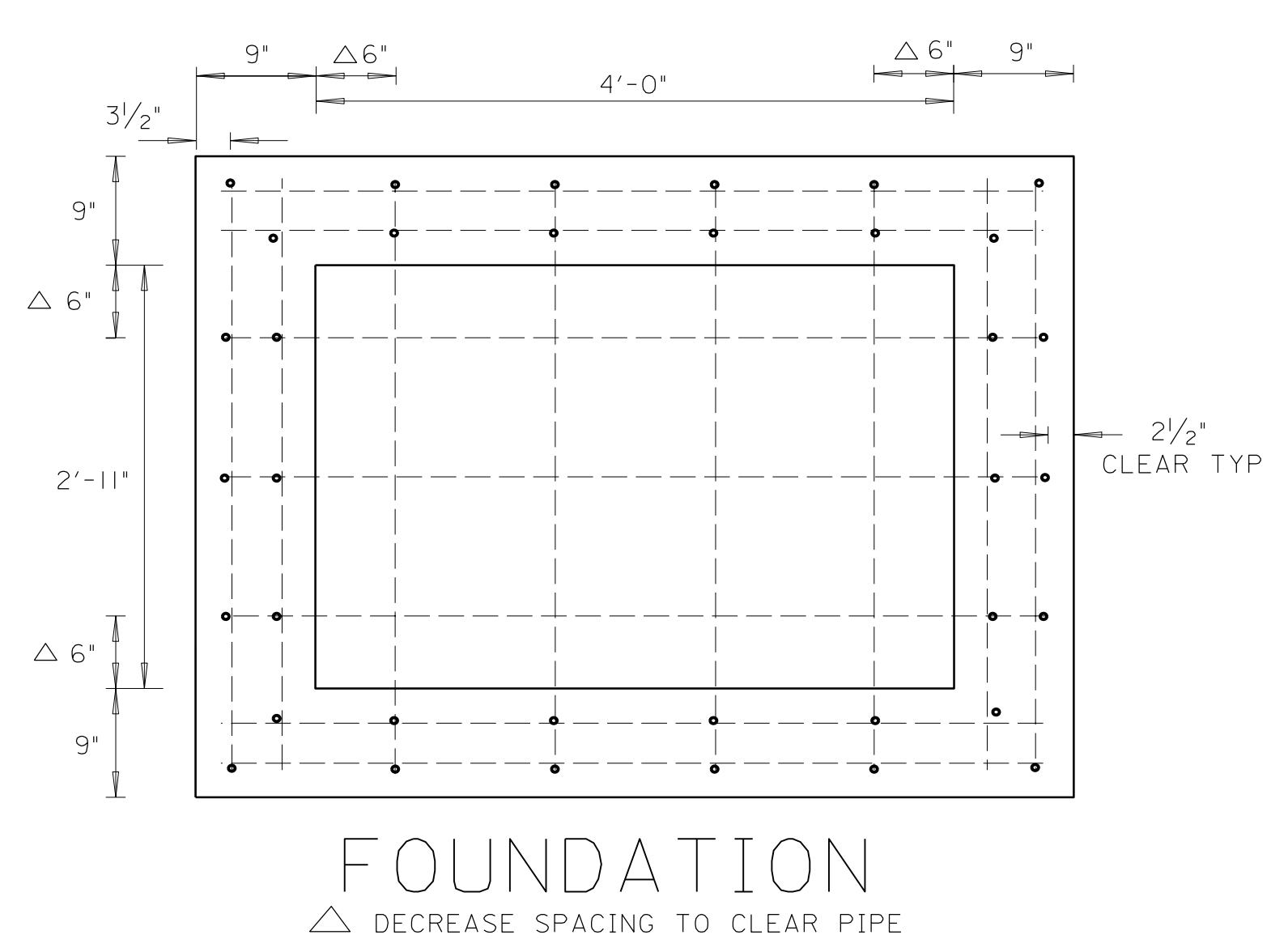
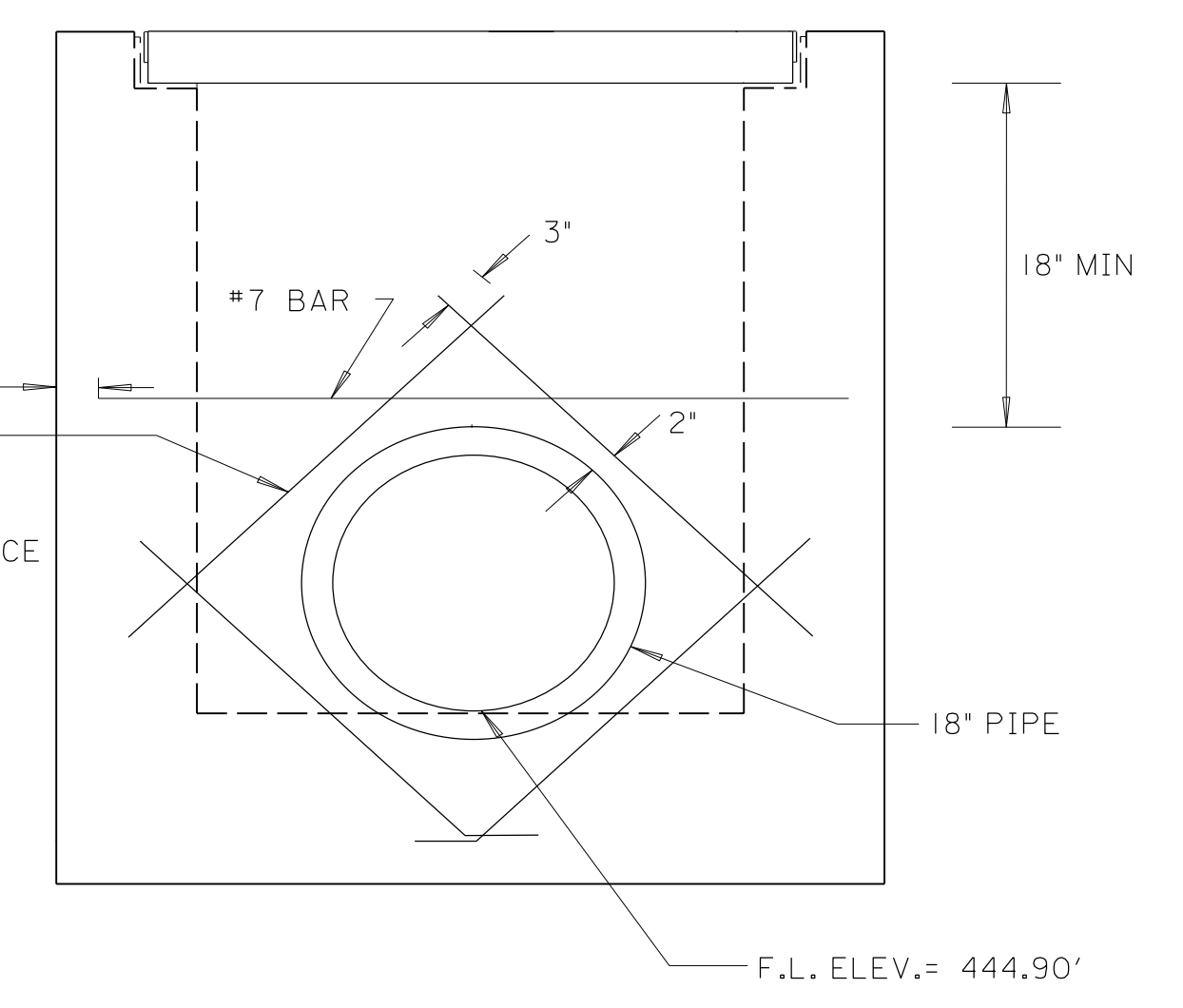
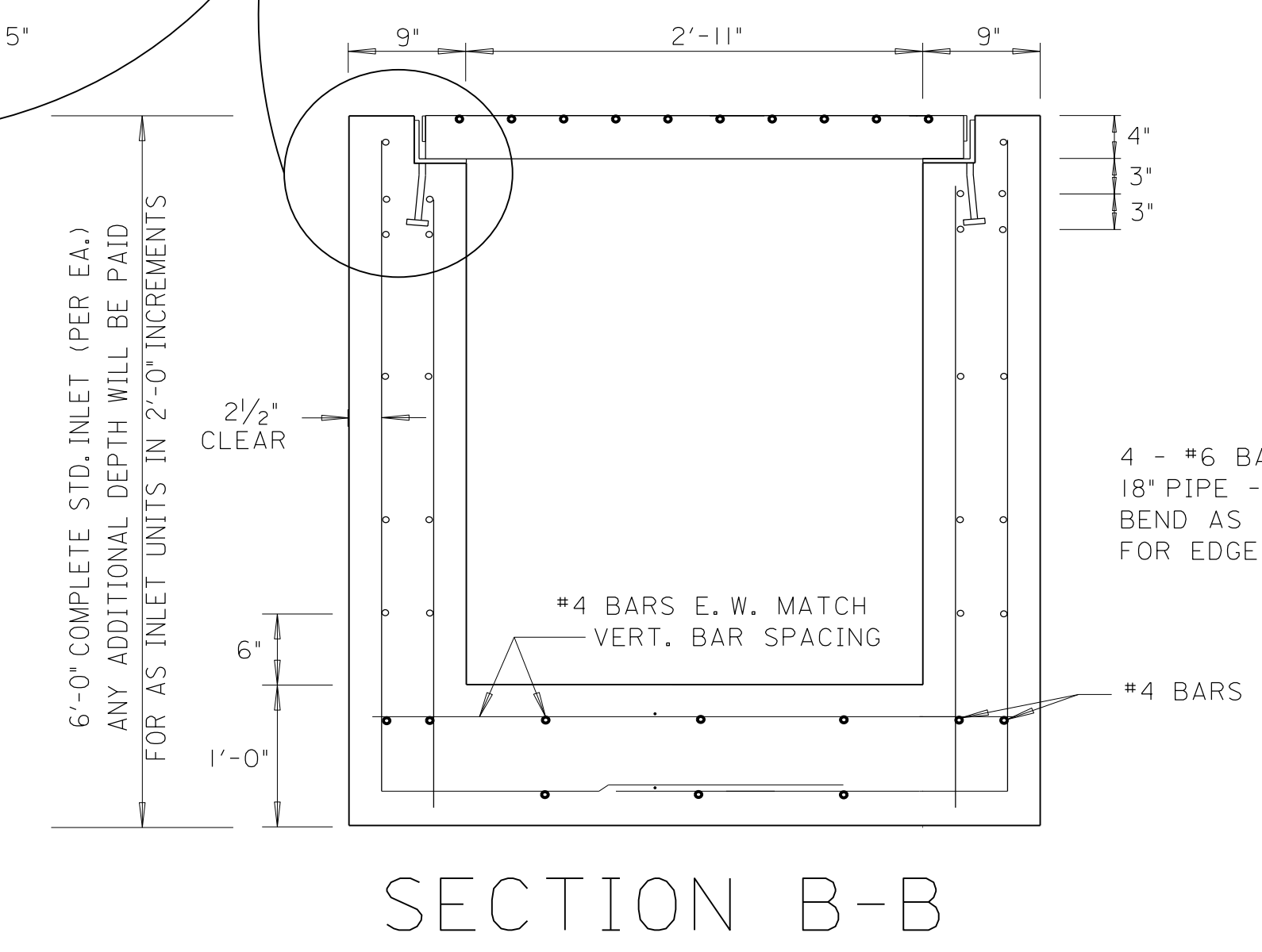
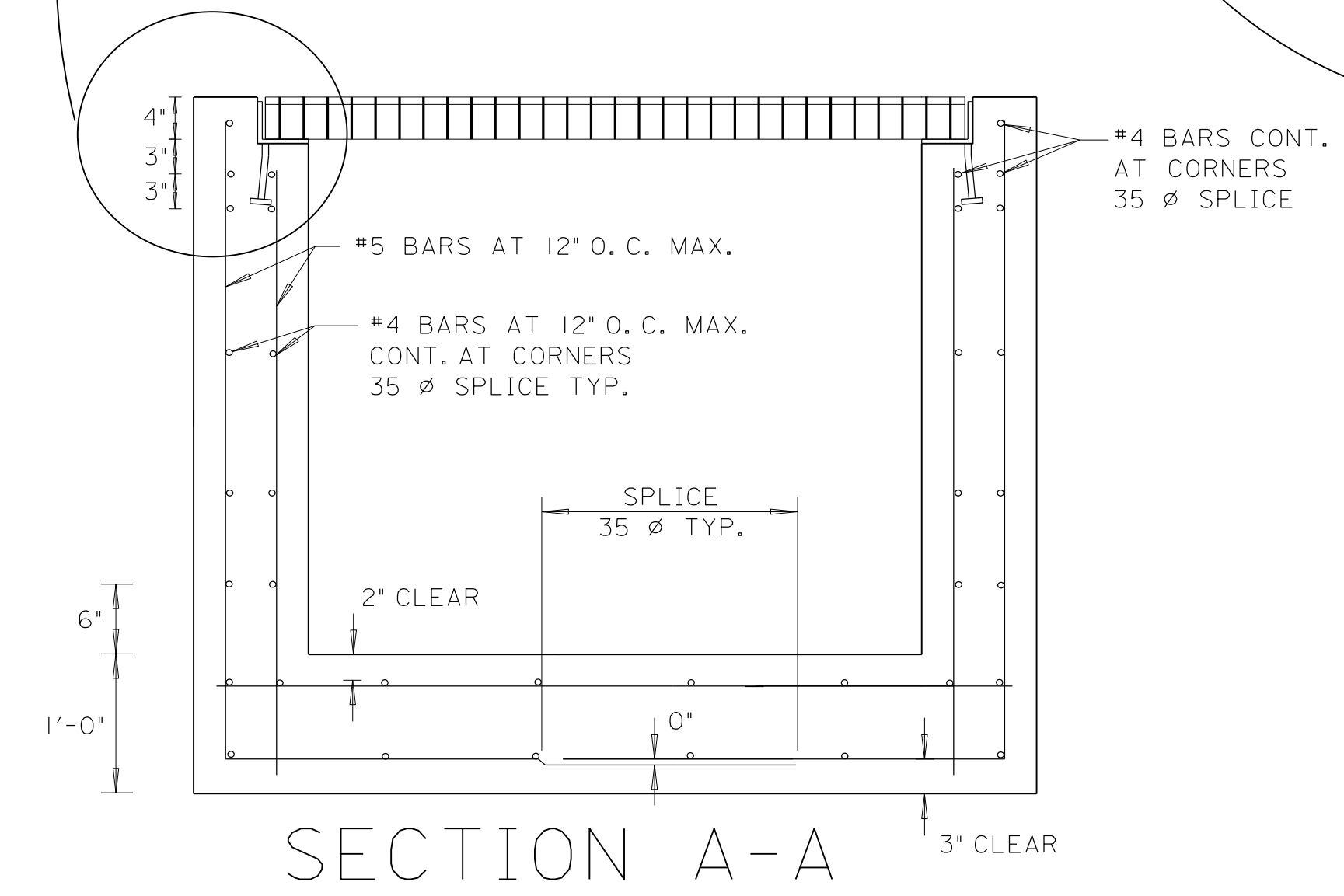


GRATE SPECIFICATIONS:
THE GRATING MATERIAL SHALL CONFORM TO ASTM A36 STEEL SPECIFICATION FOR THE MAIN BEARING BARS. MAIN BARS TO BE 4 INCHES DEEP BY 1/4" THICK, SPACED AT 1 7/8" CENTERS. THE CROSS BARS SHALL BE WELDED FLUSH WITH THE TOP OF THE GRATING. THE GRATING SHALL SPAN 39" MAXIMUM AND SATISFY THE AASHTO LOADINGS FOR H-20/HS-20.



--SPECIFICATIONS--
CURRENT ALABAMA DEPARTMENT OF TRANSPORTATION

THIS DRAWING REPRESENTS DESIGNS PREPARED FOR USE BY THE ALABAMA DEPARTMENT OF TRANSPORTATION AND IS NOT TO BE COPIED, REPRODUCED, ALTERED, OR USED BY ANYONE, OR ANY ORGANIZATION, WITHOUT THE EXPRESSED WRITTEN CONSENT OF THE ALABAMA DEPARTMENT OF TRANSPORTATION REPRESENTATIVE AUTHORIZED TO APPROVE THIS USE. ANYONE MAKING UNAUTHORIZED USE OF THIS DRAWING MAY BE PROSECUTED TO THE FULLEST EXTENT OF THE LAW.

REVISIONS

ALABAMA DEPARTMENT OF TRANSPORTATION
1409 COLISEUM BOULEVARD
MONTGOMERY, AL 36130-3050
DESIGN BUREAU SPECIAL DRAWING

DETAILS OF INLET - TYPE "PR"

SPECIAL DRAWING NO

Bureau Std Engr : L.V.S.
DRAWN BY: C.S.S. DATE DRAWN: 10-24-94

SPECIAL PROJECT DETAIL

INDEX NO

NOT TO SCALE