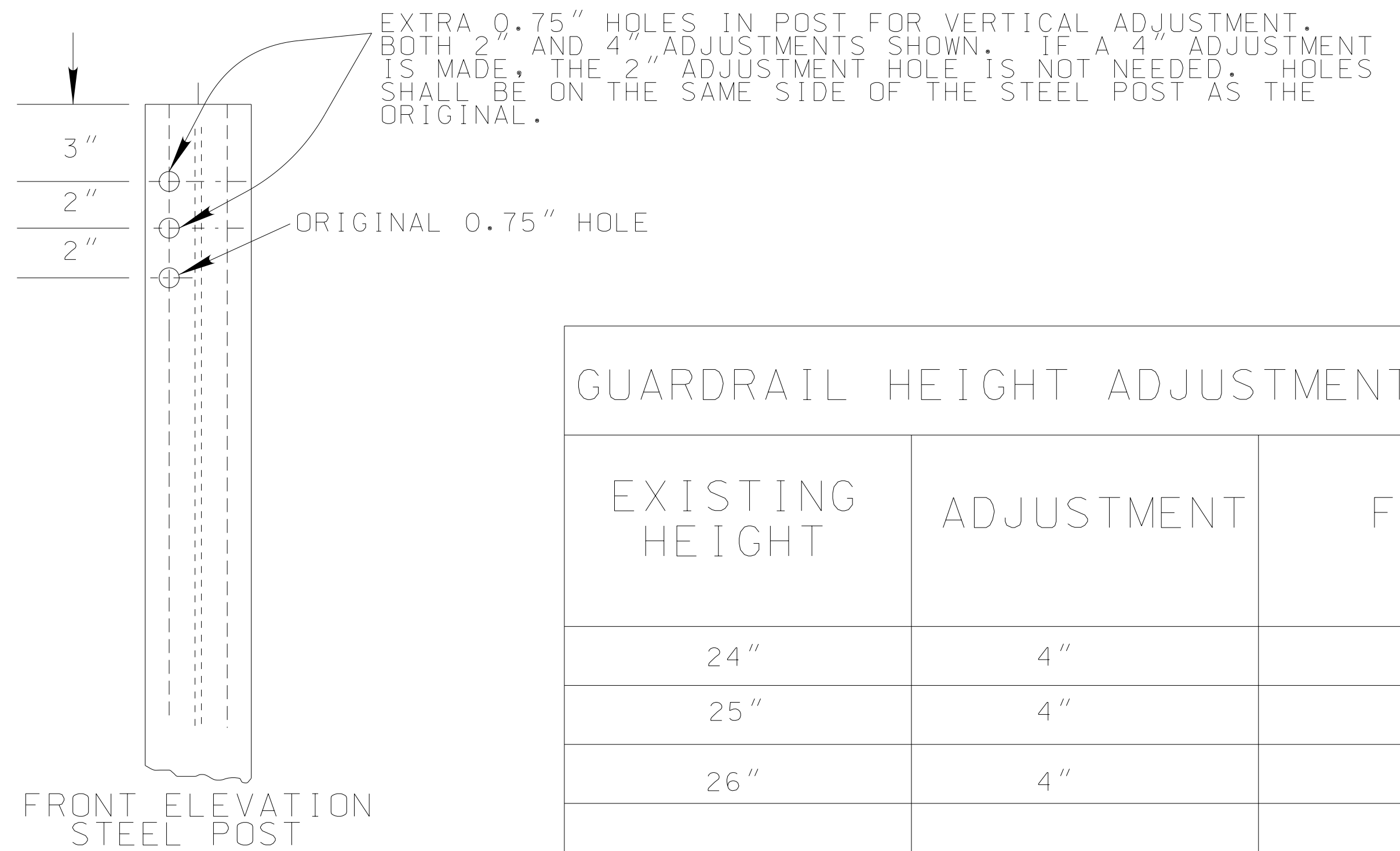
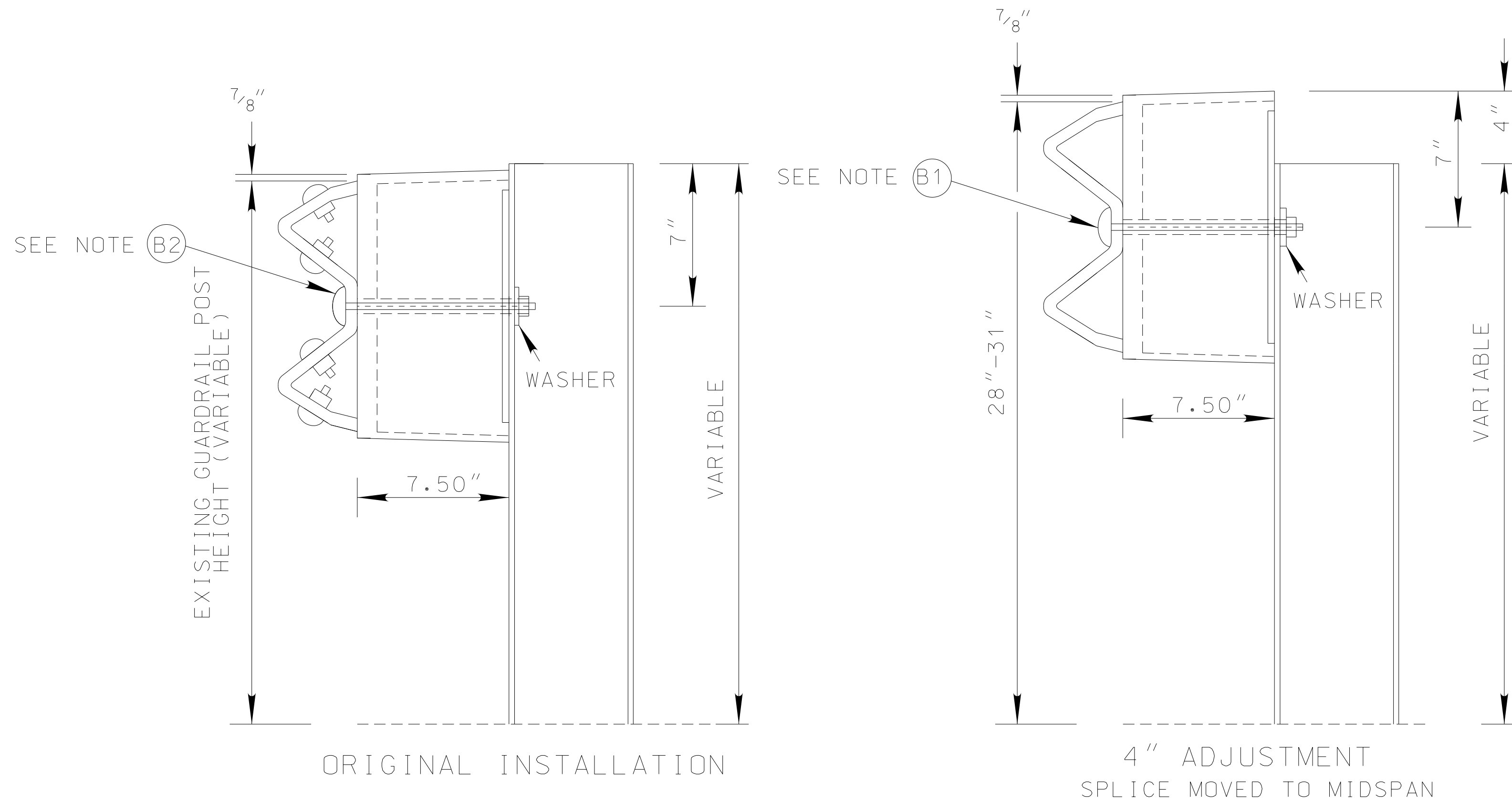


GUARDRAIL HEIGHT ADJUSTMENT (USING ADJUSTMENT HOLES)

THIS DRAWING IS TO BE USED FOR RESURFACING, MAINTENANCE, AND BRIDGE REPAIR PROJECTS ONLY, THIS DRAWING IS NOT INTENDED TO BE USED FOR NEW CONSTRUCTION PROJECTS.

REFERENCE PROJECT NO	FISCAL YEAR	SHEET NO



EXISTING HEIGHT	ADJUSTMENT	FINAL
24"	4"	28"
25"	4"	29"
26"	4"	30"

ADJUSTABLE STEEL POSTS AND BLOCK-OUTS

GENERAL NOTES

1. SEE STANDARD DRAWING GR-630-S, SHEETS 1, 2 & 3 FOR ADDITIONAL POST DETAILS AND SPECIFICATIONS.
2. THE STEEL POST SHOWN ON THIS SHEET MAY BE USED WITH WOOD OR COMPOSITE BLOCKOUTS.
3. ONLY COMPOSITE OR WOOD GUARDRAIL BLOCK-OUTS LISTED ON THE ALABAMA DEPARTMENT OF TRANSPORTATION'S QUALIFIED PRODUCT LIST AS APPROVED FOR GUARDRAIL HEIGHT ADJUSTMENT SHALL BE USED. SHOULD IT BECOME NECESSARY TO CHANGE THE BLOCK-OUT TYPE ON A GIVEN PROJECT, THE COMPOSITE BLOCK-OUT BRAND TYPE SHOULD NOT BE MIXED ON A GIVEN RUN OF GUARDRAIL.
4. UP TO 4" BLOCKOUT ADJUSTMENTS HAVE BEEN EVALUATED UNDER MASH TL-3.
5. IF EXISTING POSTS DO NOT HAVE PUNCHED HOLES, INDICATE IN THE REMARKS COLUMN ON THE GUARDRAIL SUMMARY BOX. THE CONTRACTOR SHALL FIELD PUNCH OR DRILL THE POSTS FOR A 4" ADJUSTMENT.
6. NO STEEL BLOCKOUTS MAY BE RETAINED ON ADJUSTED GUARDRAIL. WOOD AND COMPOSITE BLOCKOUTS MAY BE USED. COMPOSITE BLOCKOUTS MUST BE TESTED FOR HEIGHT ADJUSTMENT AS SHOWN ON THE QUALIFIED PRODUCTS LIST.
7. ALL PUNCHED OR DRILLED HOLES ON RAILS OR POSTS WILL BE FIELD GALVANIZED AS PER ARTICLE 631 IN THE ALDOT SPECIFICATIONS.
8. GUARDRAIL RESET ITEM 631C, LF, SHALL INCLUDE RAISING THE RAIL 2" OR 4", CHANGING THE BLOCKOUTS (SEE NOTE 9), MOVING THE SPLICE TO MIDSPAN, PUNCHING OR DRILLING NEW HOLE IN THE RAIL, PUNCHING OR DRILLING NEW HOLES IN THE POST (IF REQ'D), AND THE TRANSITION AS SHOWN ON STD DWG GR-630-S (SHEET 2 OF 3).
9. BLOCKOUTS REQUIRED FOR REPLACEMENT OF STEEL BLOCKOUTS OR REPLACEMENT OF COMPOSITE BLOCKOUTS NOT MASH APPROVED FOR HEIGHT ADJUSTMENT WILL BE PAID UNDER ITEM 631C, GUARDRAIL RESET.

INSTALLATION NOTES FOR BLOCK-OUTS WITH HORIZONTAL ADJUSTMENT HOLES

- (B1) THE 2" OR 4" ADJUSTMENT WILL REQUIRE ONE 5/8" DIAMETER X 10" LONG BUTTON HEAD BOLT. EACH BOLT WILL REQUIRE ONE ROUND STEEL WASHER.
- (B2) THE ORIGINAL BOLT, NUT, AND WASHER MAY BE USED IN THE ADJUSTMENT IF APPROVED BY THE ENGINEER.

--SPECIFICATIONS--
CURRENT ALABAMA DEPARTMENT OF TRANSPORTATION

THIS DRAWING REPRESENTS DESIGNS PREPARED FOR USE BY THE ALABAMA DEPARTMENT OF TRANSPORTATION AND IS NOT TO BE COPIED, REPRODUCED, ALTERED, OR USED BY ANYONE, OR ANY ORGANIZATION, WITHOUT THE EXPRESSED WRITTEN CONSENT OF THE ALABAMA DEPARTMENT OF TRANSPORTATION REPRESENTATIVE AUTHORIZED TO APPROVE THIS USE. ANYONE MAKING UNAUTHORIZED USE OF THIS DRAWING MAY BE PROSECUTED TO THE FULLEST EXTENT OF THE LAW.

REVISIONS 1. Revised General Notes numbers 5, 7, and 8 by inserting on the appropriate line PUNCH OR DRILL, PUNCHED OR DRILLED, or PUNCHING OR DRILLING on 07-15-19 by J.F.T. 2. General update of notes for clarification and to require MASH acceptance of blockouts on 7-16-2020 by D.J.W. 3. Modified note 8 on 1-8-2021 by D.J.W.	 ALABAMA DEPARTMENT OF TRANSPORTATION 1409 COLISEUM BOULEVARD MONTGOMERY, AL 36130-3050 DESIGN BUREAU SPECIAL DRAWING GUARDRAIL HEIGHT ADJUSTMENT
Bureau Std Engr: D.J.W. DRAWN BY: J.F.T. DATE DRAWN: 05-01-18	SPECIAL DRAWING NO SPECIAL PROJECT DETAIL INDEX NO 325

NOT TO SCALE