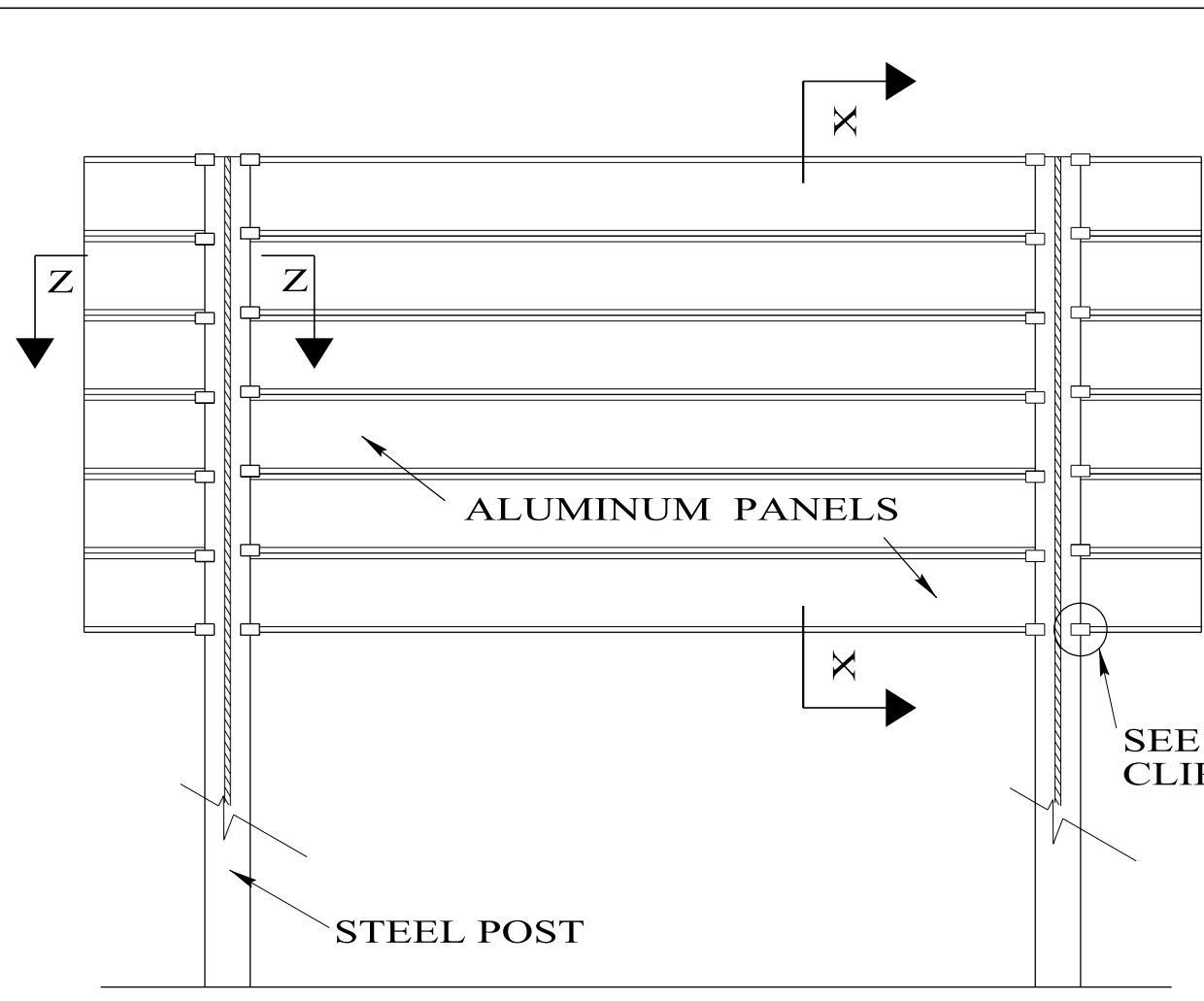
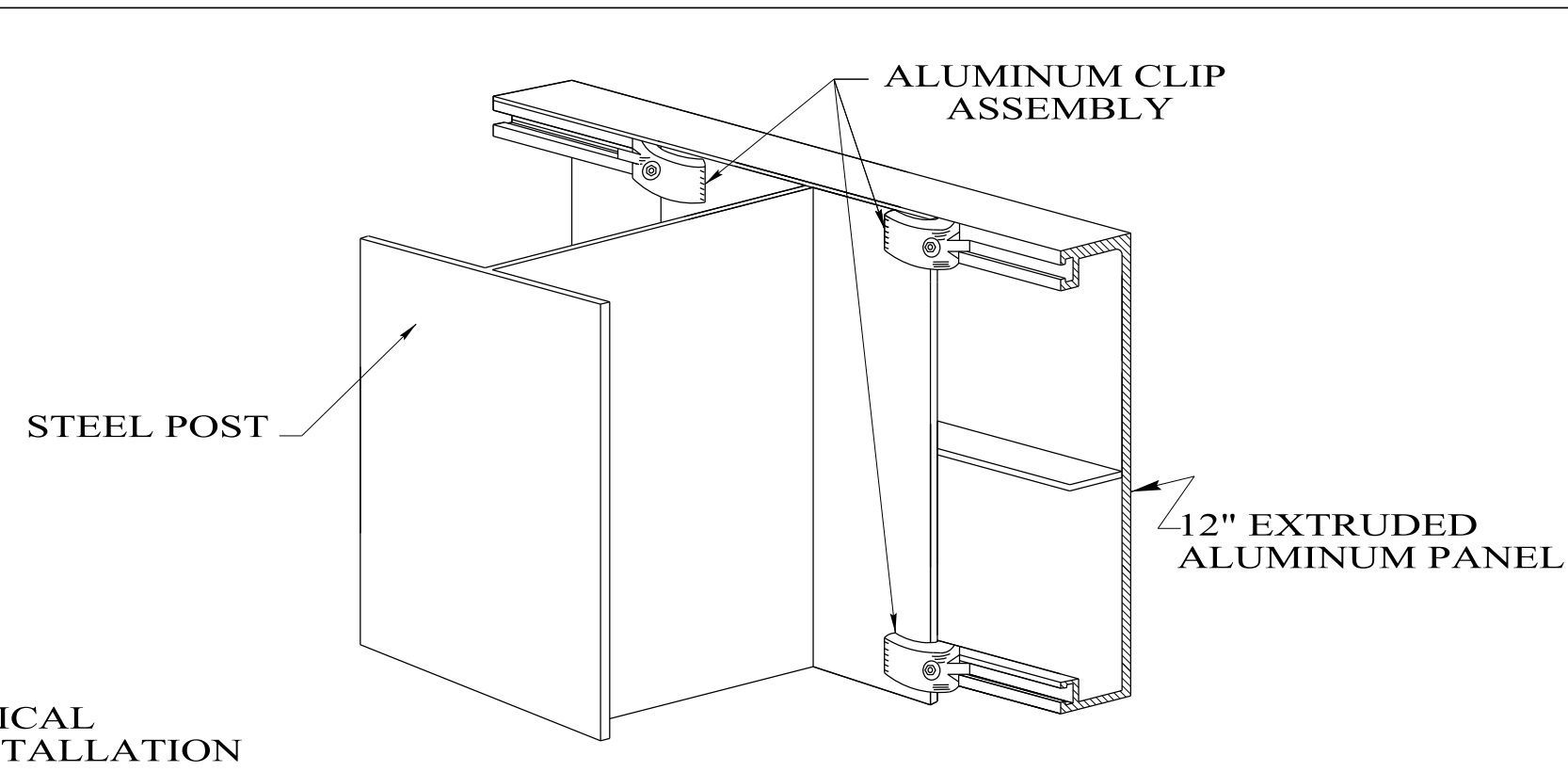


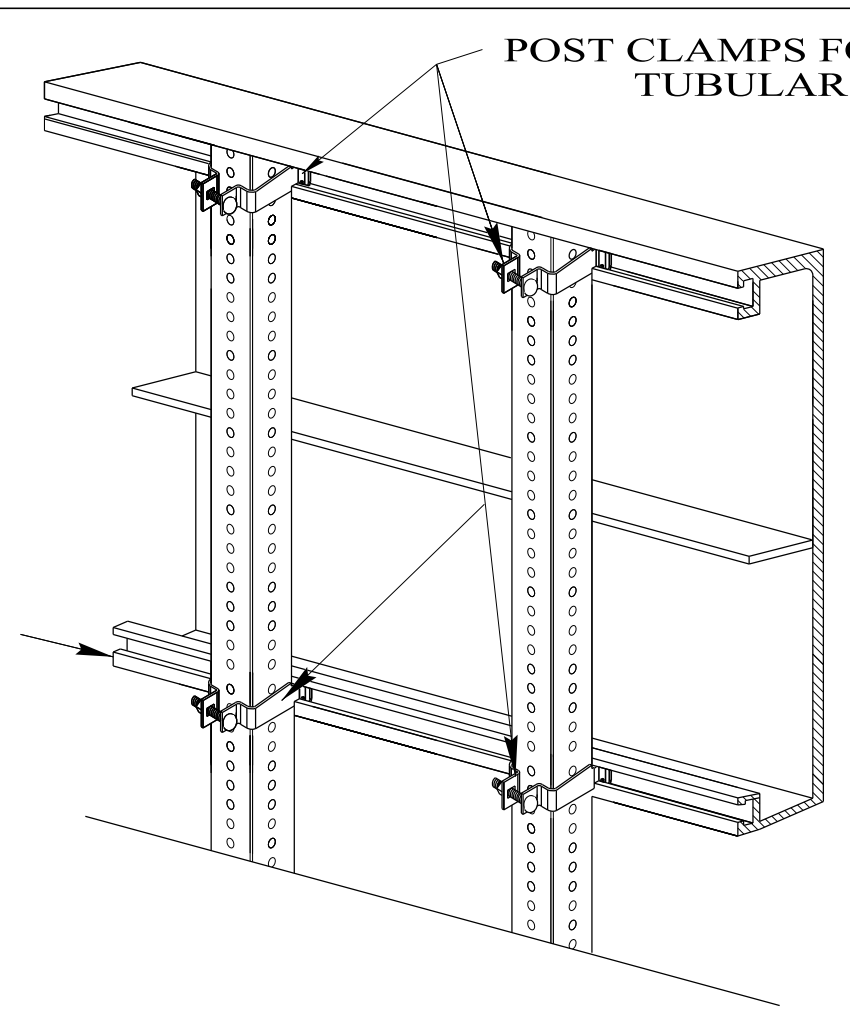
REFERENCE PROJECT NO	FISCAL YEAR	SHEET NO



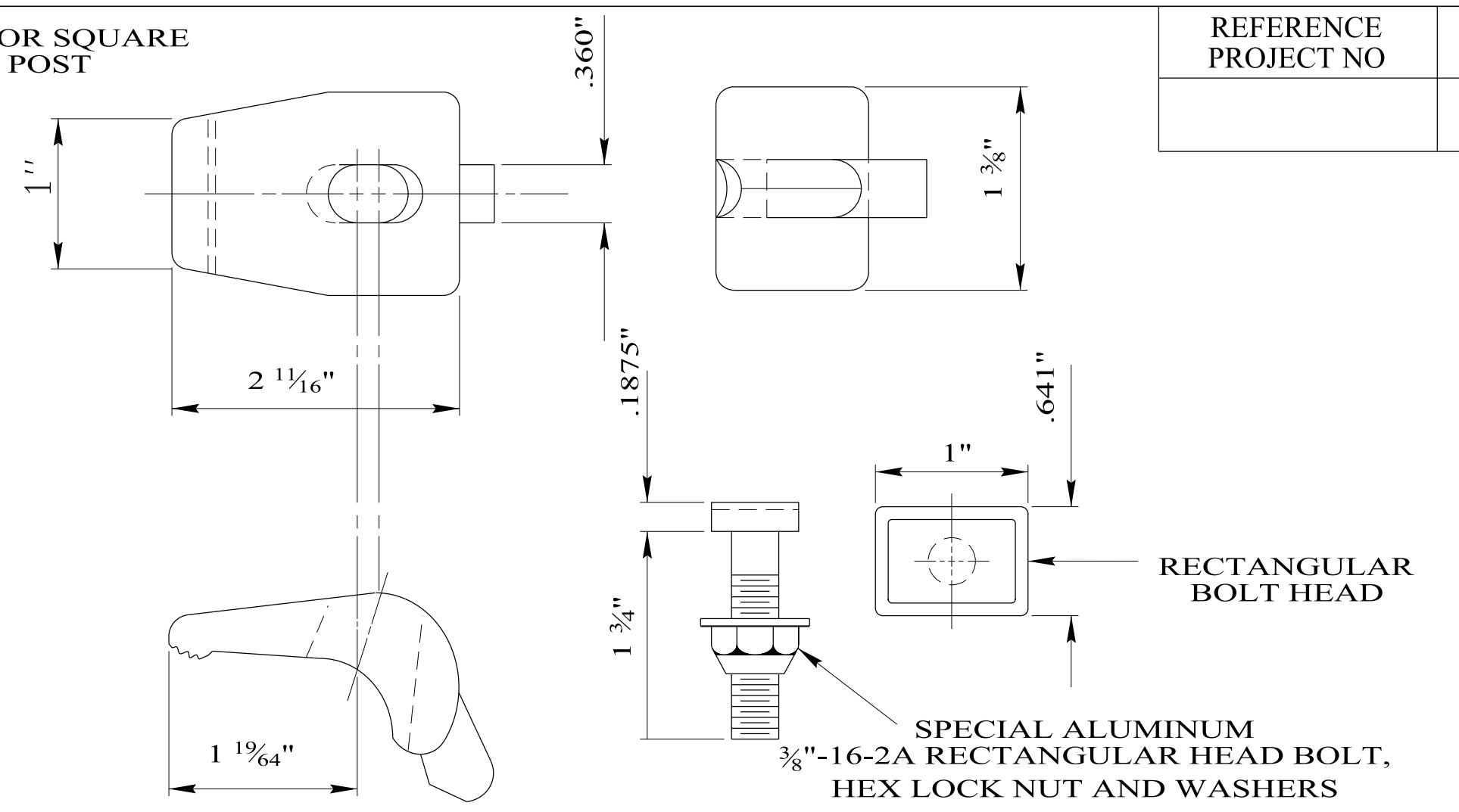
ELEVATION VIEW OF SIGN



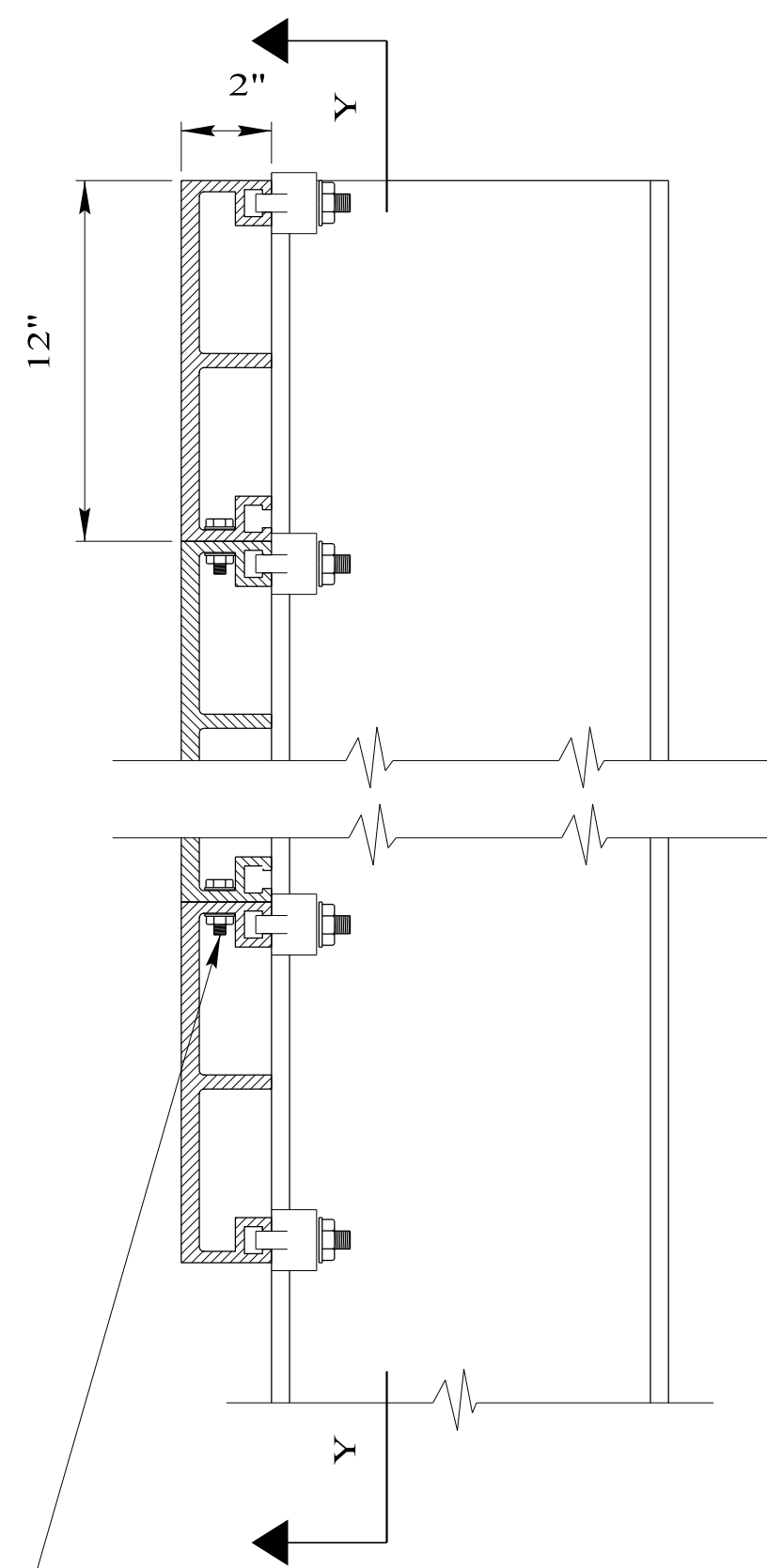
TYPICAL CLIP INSTALLATION



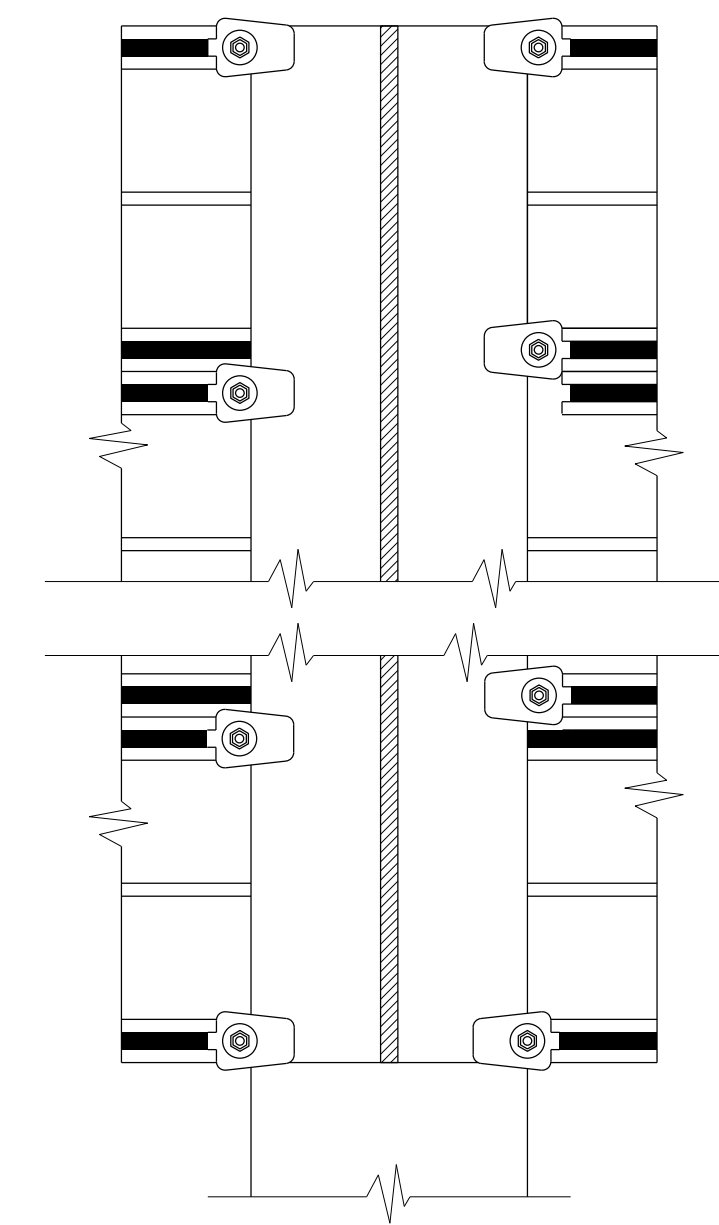
INSTALLATION ON SQUARE TUBULAR POST



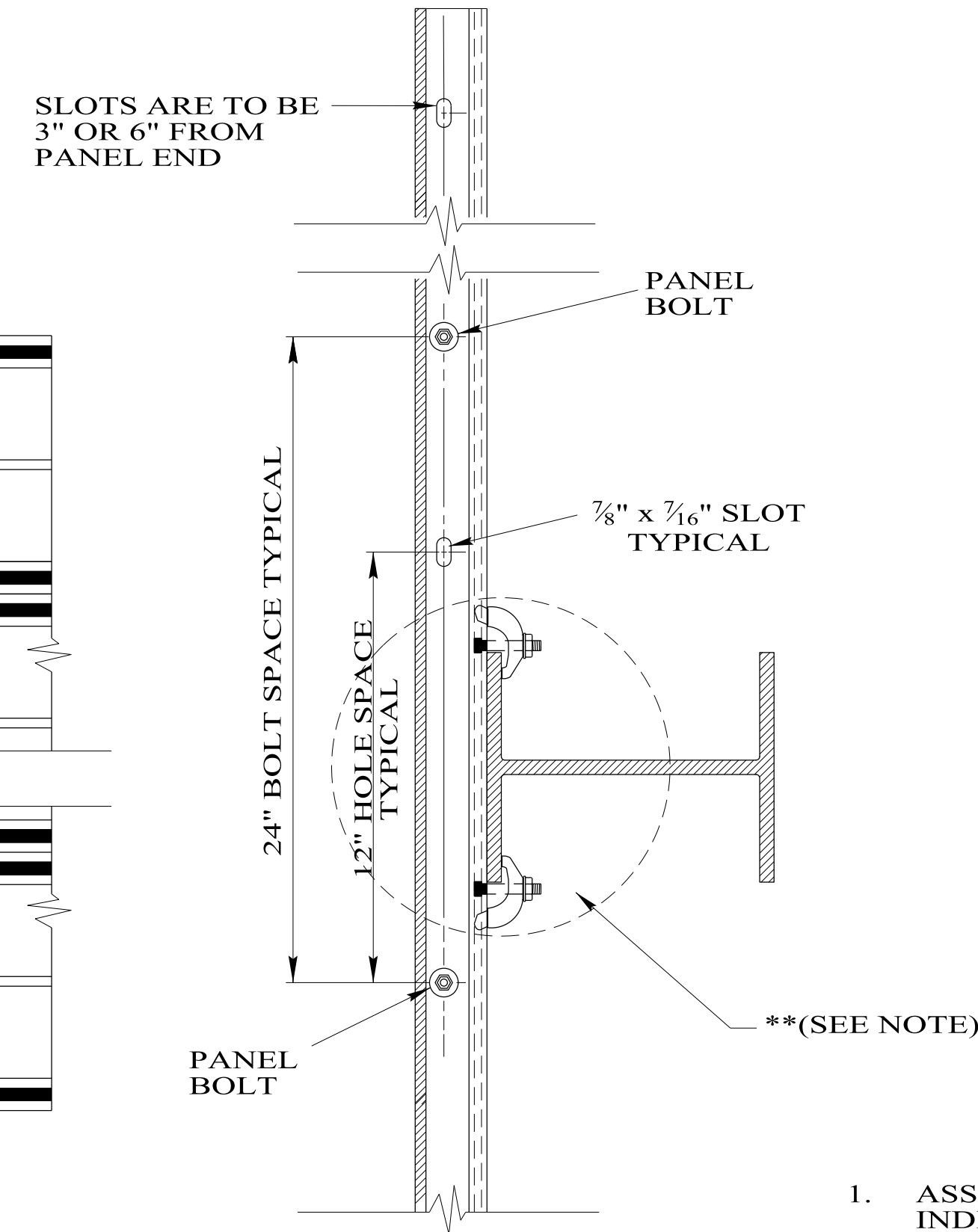
POST CLIP AND POST CLIP BOLT DETAILS



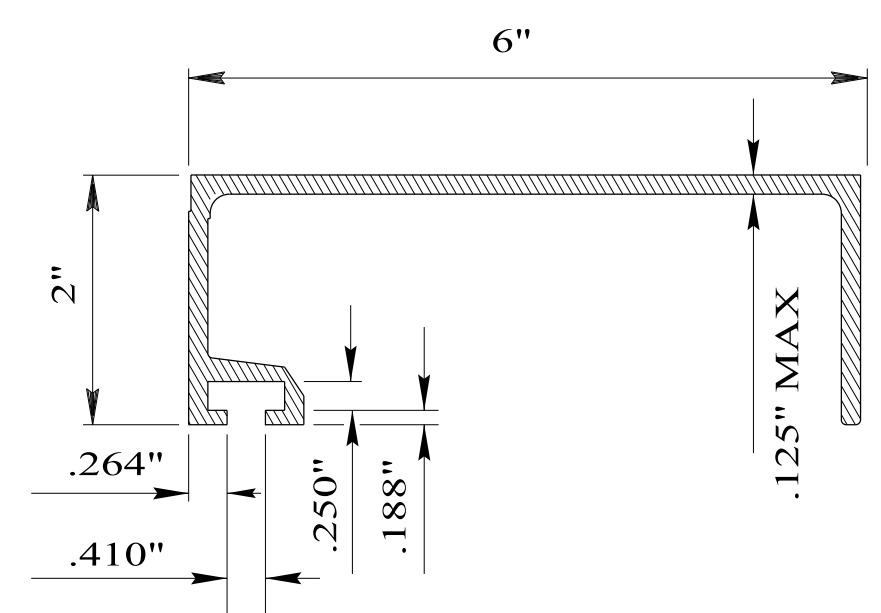
SECTION YY



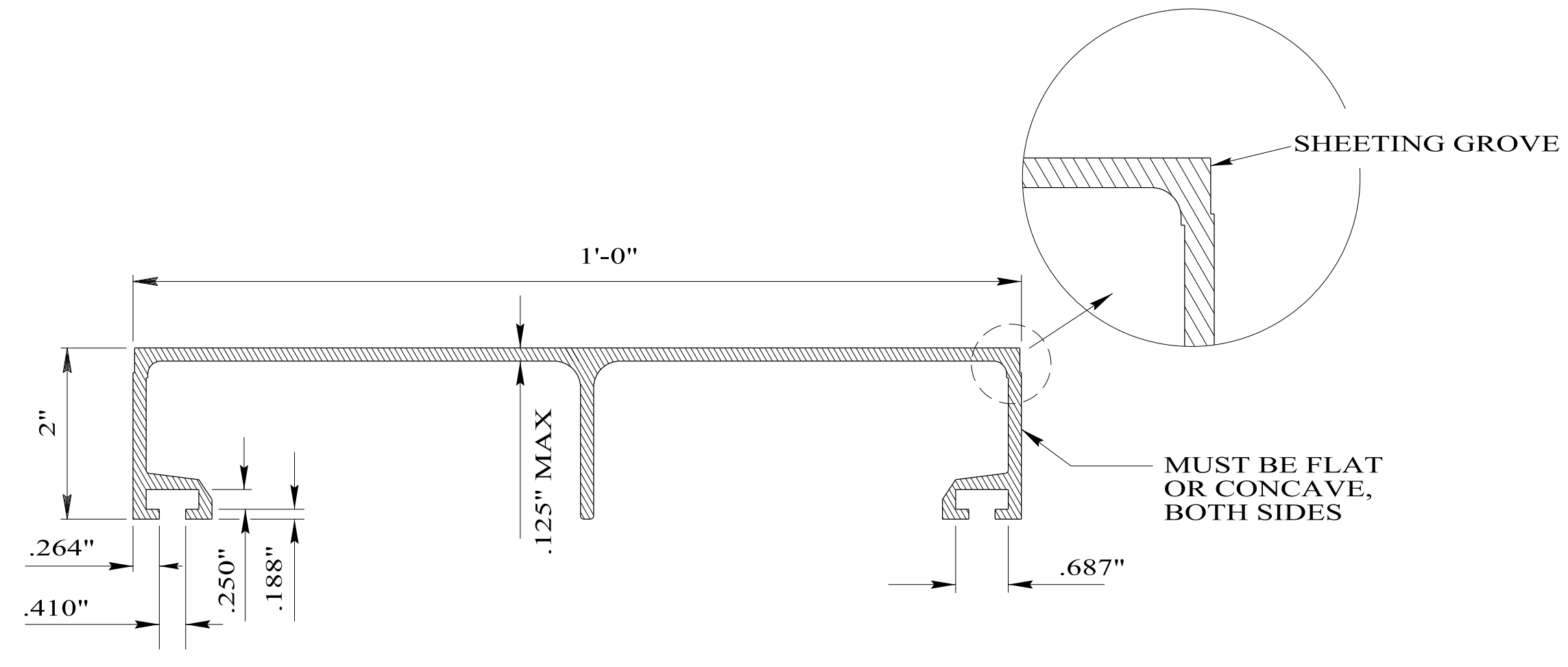
DETAIL A



SECTION ZZ



6" EXTRUDED PANEL*



12" EXTRUDED PANEL*

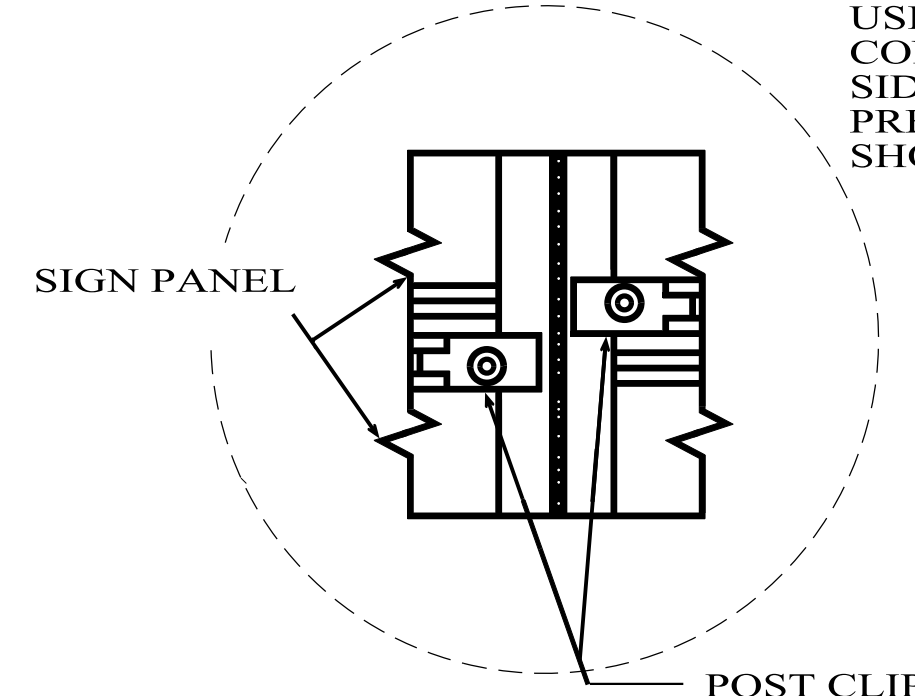
INSTALLATION OF SIGN PANELS

1. ASSEMBLY OF EXTRUDED SIGN PANELS COULD EITHER BE ASSEMBLED INDIVIDUALLY ON THE SIGN POST, OR EXTRUDED PANELS COULD BE COMPLETELY ASSEMBLED ON THE GROUND BEFORE BEING MOUNTED ON THE POST. COMPLETELY ASSEMBLED EXTRUDED SIGN PANELS SHALL BE CENTERED ON THE SIGN POSTS. PANELS SHALL BE HORIZONTAL AND ATTACHED TO THE POSTS WITH POST CLIPS AND POST CLIP BOLTS. THE POST CLIPS AND BOLTS SHALL BE ON BOTH SIDES OF EACH POST AS SHOWN IN THE DRAWING. EACH ADJOINING PANEL SHALL BE FLUSH BEFORE TIGHTENING PANEL BOLTS.
2. LOCKNUTS ON THE POST CLIP FASTENERS SHALL BE TORQUED TO 225 INCH POUNDS WITH DRY CLEAN UNLUBRICATED THREADS.
3. DEPENDENT UPON THE TOTAL SIGN SQUARE FOOTAGE, USE OF 2 1/2", 12 GAUGE, SQUARE TUBULAR POST WITH, 2 1/4", 14 GAUGE, BREAKAWAY SLIP BASE COULD BE AN OPTION. SEE SPECIAL DRAWING NUMBER IHS-710-12.

* RECYCLED EXTRUDED ALUMINUM PANELS ARE ACCEPTED BASED ON ALDOT'S EXTRUDED ALUMINUM PANEL SPECIFICATIONS.

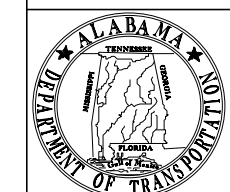
3/8" DIA x 3/4" LENGTH ALUMINUM PANEL BOLT AND NUT, TWO FLAT WASHERS AND ONE LOCK WASHER

SECTION XX



**NOTE: USE POST CLIPS AT EVERY CONNECTION POINT ON EACH SIDE OF SIGN POST. PREFERABLY, STAGGERED AS SHOWN ON DETAIL A.

NOT TO SCALE



ALABAMA DEPARTMENT OF TRANSPORTATION
1409 COLISEUM BOULEVARD
MONTGOMERY, AL 36130-3050

THIS DRAWING REPRESENTS DESIGNS PREPARED FOR USE BY THE ALABAMA DEPARTMENT OF TRANSPORTATION AND IS NOT TO BE COPIED, REPRODUCED, ALTERED, OR USED BY ANYONE, OR ANY ORGANIZATION, WITHOUT THE EXPRESSED WRITTEN CONSENT OF THE ALABAMA DEPARTMENT OF TRANSPORTATION REPRESENTATIVE AUTHORIZED TO APPROVE THIS USE. ANYONE MAKING UNAUTHORIZED USE OF THIS DRAWING MAY BE PROSECUTED TO THE FULLEST EXTENT OF THE LAW.

REVISIONS:
1. Added to CADD on 6-23-2011 by J.F.T.
2. Revised the wording of the * note on 11-17-2020 by D.J.W.
3. Deleted ".081" MIN" found on "6" EXTRUDED PANEL" and "12" EXTRUDED PANEL" on 04-16-2024 by J.F.T.

Bureau Std Engr: G.L.D.
DRAWN BY:
DATE DRAWN: 4-1-2011
REVISED DATE: 04-16-2024

DESIGN BUREAU SPECIAL DRAWING
DETAILS OF EXTRUDED ALUMINUM PANEL SIGNS

--SPECIFICATIONS--
CURRENT ALABAMA DEPARTMENT OF TRANSPORTATION
SPECIAL DRAWING NO
SPECIAL PROJECT DETAIL
INDEX NO
71014