

ALABAMA DEPARTMENT
OF TRANSPORTATION

2017 CRASH FACTS



DRIVESAFEALABAMA.ORG





LETTER FROM THE

Transportation Director

Safety is paramount in everything we do. It begins with our pre-construction process, where we plan and design the safest roads and bridges possible. Whether it's planning for new construction, replacing functionally obsolete or structurally deficient bridges, or wider shoulders scored with rumble strips on rural resurfacing projects, we focus on safety.

Analyzing data about crashes is an important part of how ALDOT personnel identify specific opportunities for improving the safety of our transportation system. We then use innovative engineering techniques, perform routine maintenance, and manage funding in a fiscally responsible and priority-based manner to create safer roads.

As you review the data in the 2017 Crash Facts book, I challenge you to consider your personal commitment to safety and the things you can do to help reduce the number of crashes in Alabama. Always follow speed limits; drive sober; buckle up; share the road with motorcycles, bicycles and pedestrians; obey railroad crossing signals; avoid any and all forms of distracted driving; and lead by example by teaching young people safe driving habits.

Wearing a seat belt and making sure that everybody in the vehicle is wearing a seat belt is the single most important safety habit you can adopt. You will see on page 22 of 2017 Crash Facts that **ALMOST 60 PERCENT OF PEOPLE WHO DIED IN CRASHES WERE NOT WEARING A SEAT BELT.** Statistics clearly show that seat belts save lives. Violators of Alabama's seat belt laws may be fined and assessed points on their driver licenses. Simply put, there are plenty of good reasons to buckle up.

I hope you will look further into 2017 Crash Facts to find even more important insights into making our roads safe.

Drive Safe Alabama!

John R. Cooper

Transportation Director

2017 CRASH FACTS Table of Contents

4	Quick Facts
5	Ten-Year Crash Data
6	Fatality Rate Trends
7	Types of Crashes
8	Time Data
10	Involvement by Age and Gender
12	Crash Location
13	Celebrate Life Campaign
14	Crash Environment
15	Holiday Crash Statistics
16	Type of Roadway
17	Alcohol and Drug Involvement
18	Intersection Crashes by County
19	Non-Intersection Crashes by County
20	Driver Contributing Circumstances
21	Motorcycle Crash Statistics
22	Safety Restraint Usage
24	Bicycle Crash Statistics
25	Pedestrian Crash Statistics
26	Train Involved Crash Statistics
27	Work Zone Crash Statistics
28	Truck Crash Statistics
29	Fatalities by County
30	Traffic Crashes by County
35	Comparative County Statistics
37	Comparative City Statistics
44	Transforming Alabama's Safety Culture
47	Media Contact Information

Data for this report is provided by the Center for Advanced Public Safety at The University of Alabama using crash data provided by the Alabama Law Enforcement Agency.





2017 Crash Data Quick Facts

	2017 CRASH DATA	2017 VS. 2016
All Crashes	156,993	Increased 0.70%
Injuries	47,771	Increased 0.25%
Fatal Crashes	857	Decreased 13.78%
Fatalities	948	Decreased 12.95%
Registered Vehicles in Alabama	5,572,303	Increased 1.24%
Licensed Drivers in Alabama	4,006,642	Increased 0.81%
Vehicle Miles Traveled in Alabama	71,684,905,000	Increased 2.98%

Based on 2017 data, typical drivers in Alabama have greater than a **one in three chance of involvement in an injury or fatal crash** operating a vehicle over their lifetimes.

In 2017, there were **40 certified fatalities** associated with **distracted driving**.

There were 948 people killed in 857 fatal crashes.

A traffic crash was reported every 3 minutes and 20 seconds.

A person was injured in a traffic crash every 11 minutes.

A person was killed in a traffic crash every 9 hours and 14 minutes.

For fatal crashes where a restraint was available for use, almost 60 percent of those who died from a vehicle crash were not wearing a seat belt.

Most Alabama crashes (78 percent) occurred in urban areas, but most fatalities (60 percent) occurred in rural areas.

Of all fatal crashes, 8 percent were caused by drivers 19 or under, and 21 percent were caused by drivers under 25 years of age.

For each fatality, there were over 50 injuries.

Of all fatal crashes, over 54 percent occurred at night (including dusk and dawn).

There were 113 pedestrian fatalities.

There were 79 fatalities involving motorcycle or moped riders.

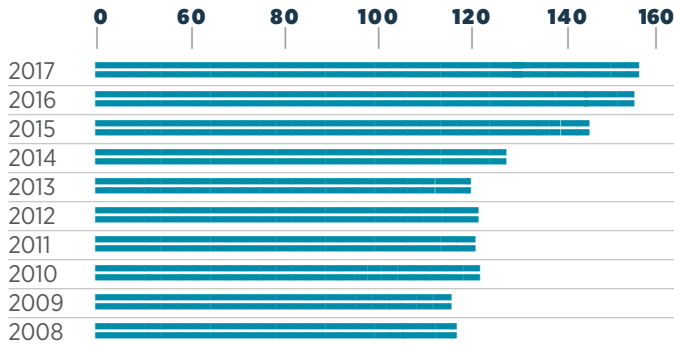
Bicyclists accounted for 6 fatalities.

There were 9 fatalities with train involvement.

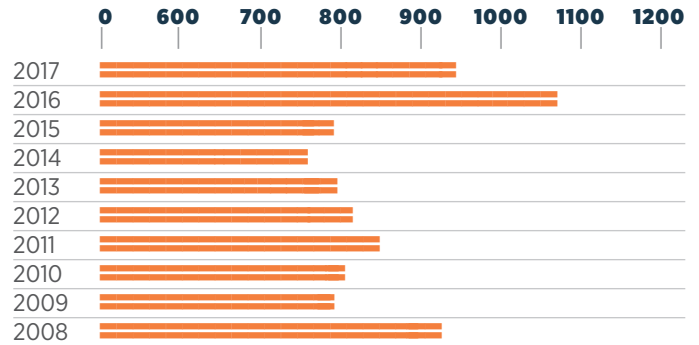
For front seat occupants who are in vehicle crashes, the probability of being killed is 59 times higher for those not wearing safety belts than those who are properly restrained.

Ten Year CRASH DATA 2008-2017

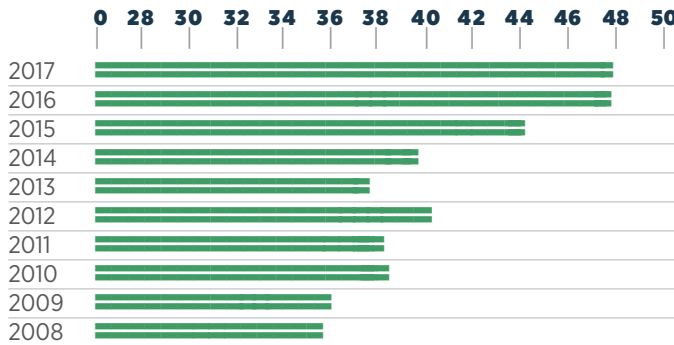
CRASHES UP 26.61% IN THOUSANDS OF CRASHES



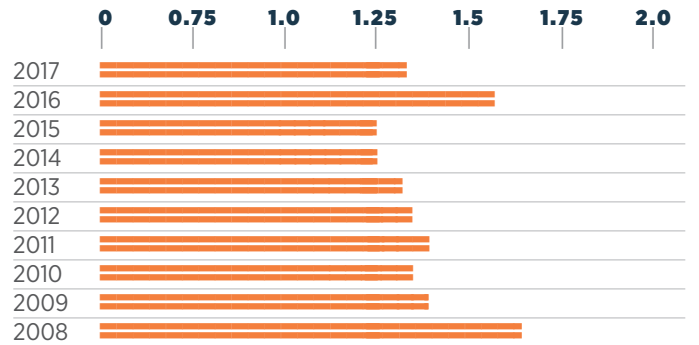
FATALITIES DOWN 1.66% IN NUMBER OF FATALITIES



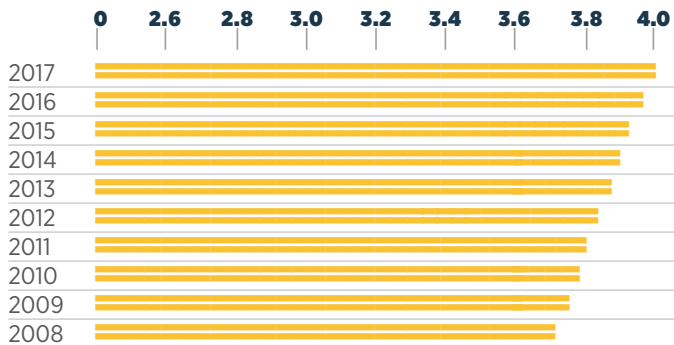
INJURIES UP 34.19% IN THOUSANDS OF INJURIES



MILEAGE DEATH RATE DOWN 19.02% IN FATALITIES PER 100 MILLION VEHICLE MILES



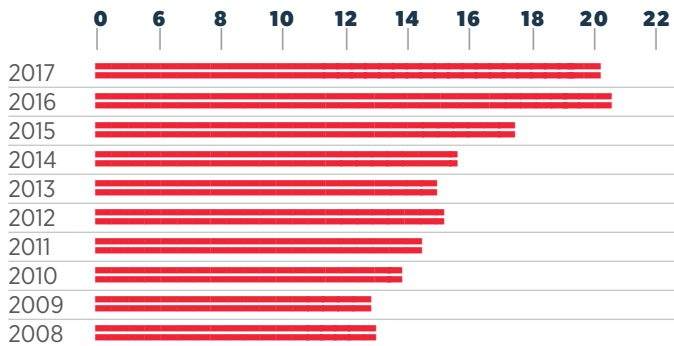
LICENSED DRIVERS UP 6.67% IN MILLIONS OF DRIVERS



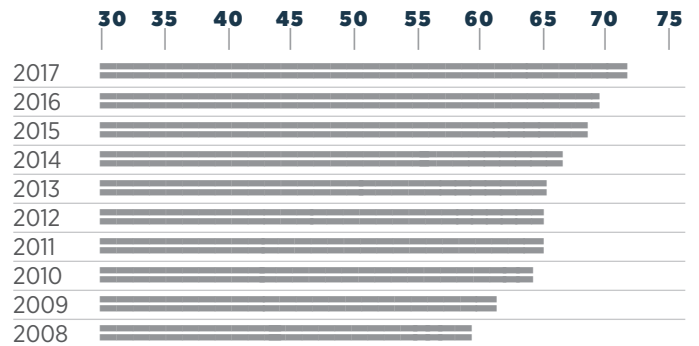
MOTOR VEHICLE REGISTRATIONS UP 8.41% IN MILLIONS OF VEHICLES



ECONOMIC LOSS UP 56.13% IN BILLIONS OF DOLLARS



VEHICLE MILES TRAVELED UP 21.19% IN BILLIONS OF MILES TRAVELED



The increase/decrease percentage of change includes the entire time frame represented.



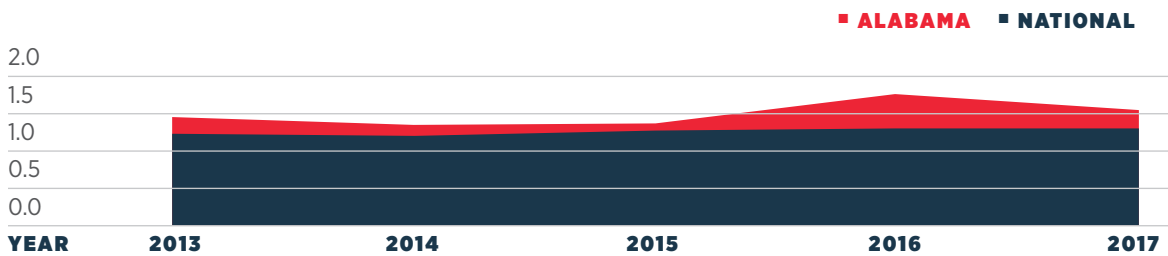
Fatality Rate **TRENDS**

CRASH TOTALS AND RATES FOR THE PAST FIVE YEARS

YEAR	TOTAL CRASHES	TOTAL INJURIES	TOTAL FATALITIES	ALABAMA FATALITY RATE (PER HMVM*)	NATIONAL FATALITY RATE (PER HMVM*)
2013	126,862	37,559	852	1.31	1.10
2014	133,219	39,518	821	1.24	1.08
2015	147,452	44,020	849	1.24	1.15
2016	155,907	47,653	1089	1.56	1.18
2017	156,993	47,771	948	1.32	1.17

*Hundred Million Vehicle Miles

FATALITY RATE: STATE VERSUS NATIONAL



Types OF CRASHES

FIRST HARMFUL EVENT (ORDERED BY FATALITIES)

EVENT	TOTAL CRASHES	% OF ALL CRASHES	NON-FATAL INJURIES	FATALITIES
Hit Other Vehicle	112,751	71.8%	32,587	379
Hit Fixed Object or Other Object	17,958	11.4%	6,589	309
Hit Pedestrian	609	0.4%	521	58
Overturning	1,604	1.0%	1,052	57
Hit Parked Vehicle	7,738	5.0%	402	11
Hit Railway Train	49	0.1%	24	5
Hit Bicyclist	193	0.1%	144	4
Other Non-Collision	346	0.2%	92	3
Hit Animal	2,373	1.5%	271	2
All other	13,372	8.5%	4,081	120
TOTAL	156,993	100.0%	45,763	948

*Includes only those pedestrian events in the First Harmful Event; for more details, see pedestrian crash statistics on page 25.

VEHICLE TYPE

TYPE	VEHICLES INVOLVED	% OF VEHICLES	0	10%	20%	30%	40%	50%	60%
Passenger Car	152,169	52.2%							
Pickup and SUV	112,910	38.7%							
Van	11,000	3.8%							
Truck	10,010	3.4%							
Motorcycle/Moped	1,743	0.6%							
Other	3,723	1.3%							
TOTAL	291,555	100%							

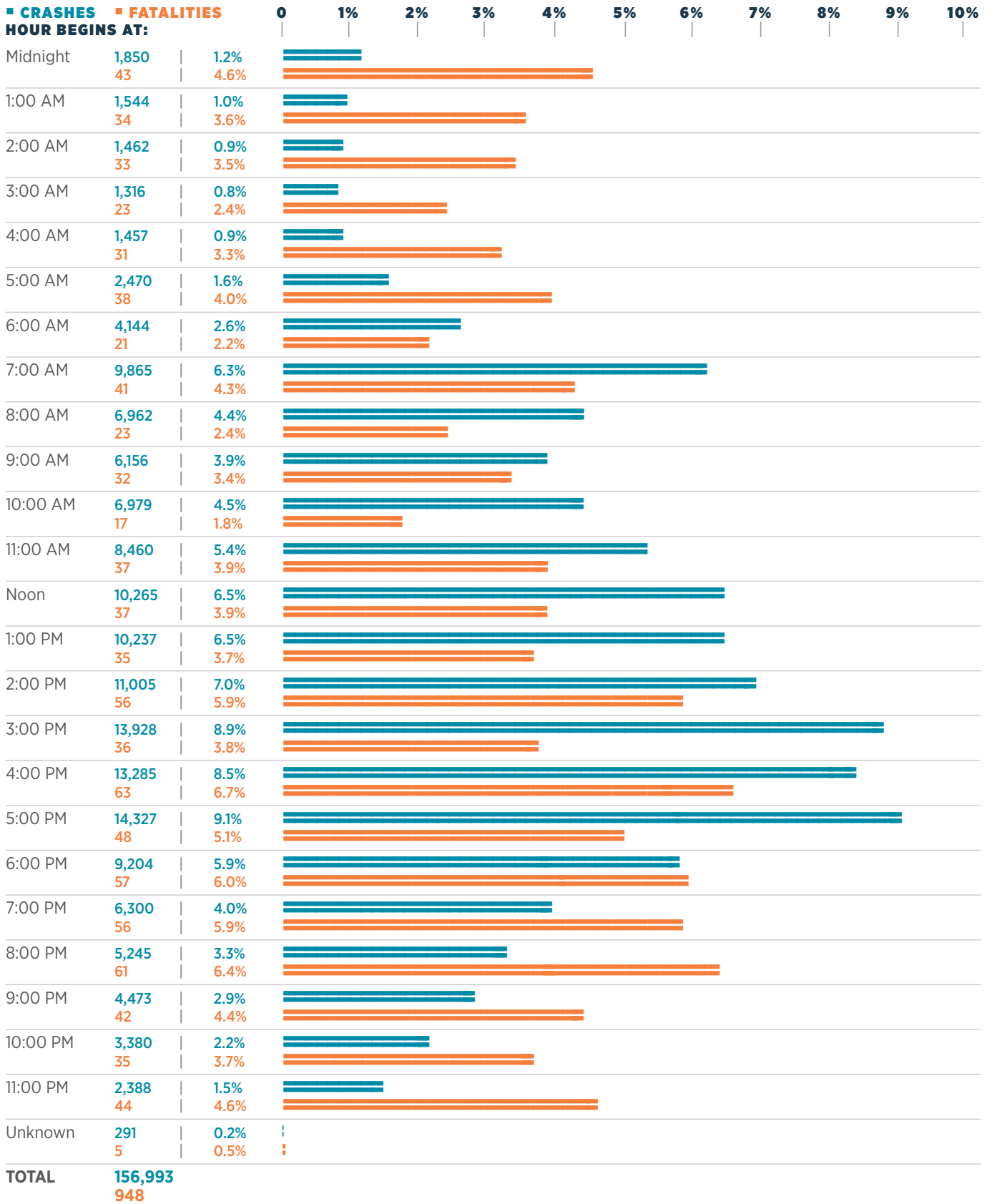
HAZARDOUS CARGO

CARGO TYPE	CRASHES
Gas/Flammable	165 67.6%
Corrosive	45 18.5%
Explosive	4 1.6%
Radioactive	1 0.4%
Other	29 11.9%
TOTAL	244 100.0%

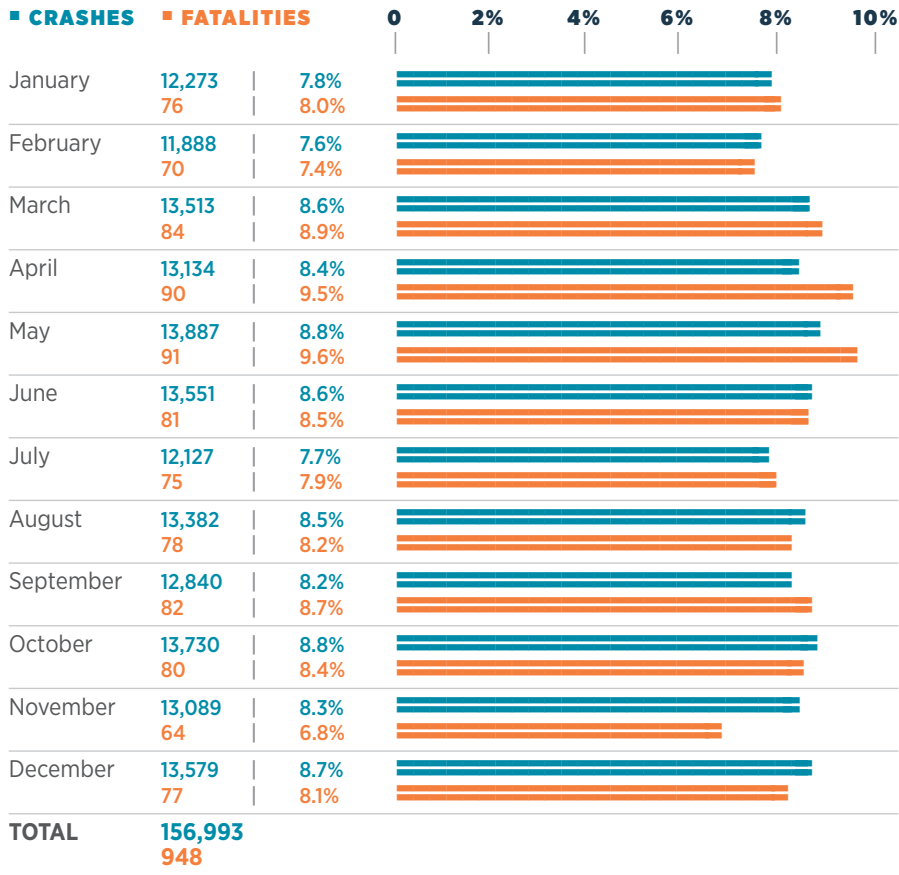


Time DATA

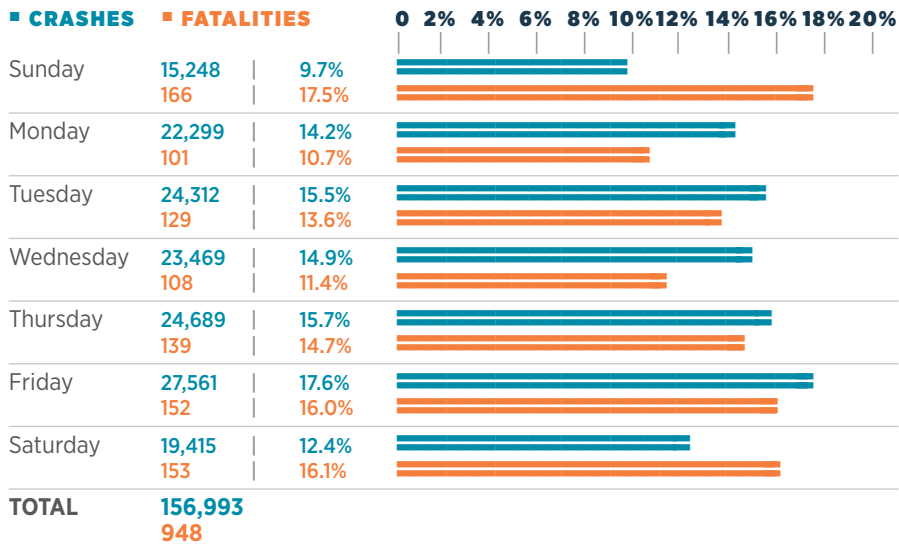
TIME OF DAY



MONTH OF YEAR



DAY OF WEEK



THE MOST
CRASH-PRONE DAY
OF THE WEEK IS
Friday.

THE MOST
FATALITY-PRONE
DAY IS
Sunday.

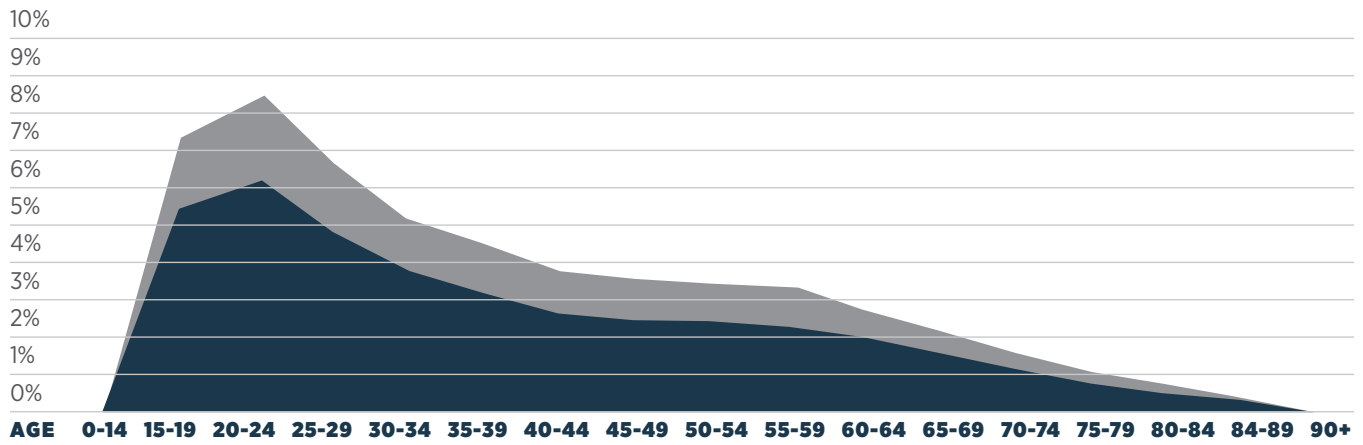
THE MOST
CRASH-PRONE PERIOD
OF THE DAY IS
3pm-6pm.



INVOLVEMENT BY Age and Gender

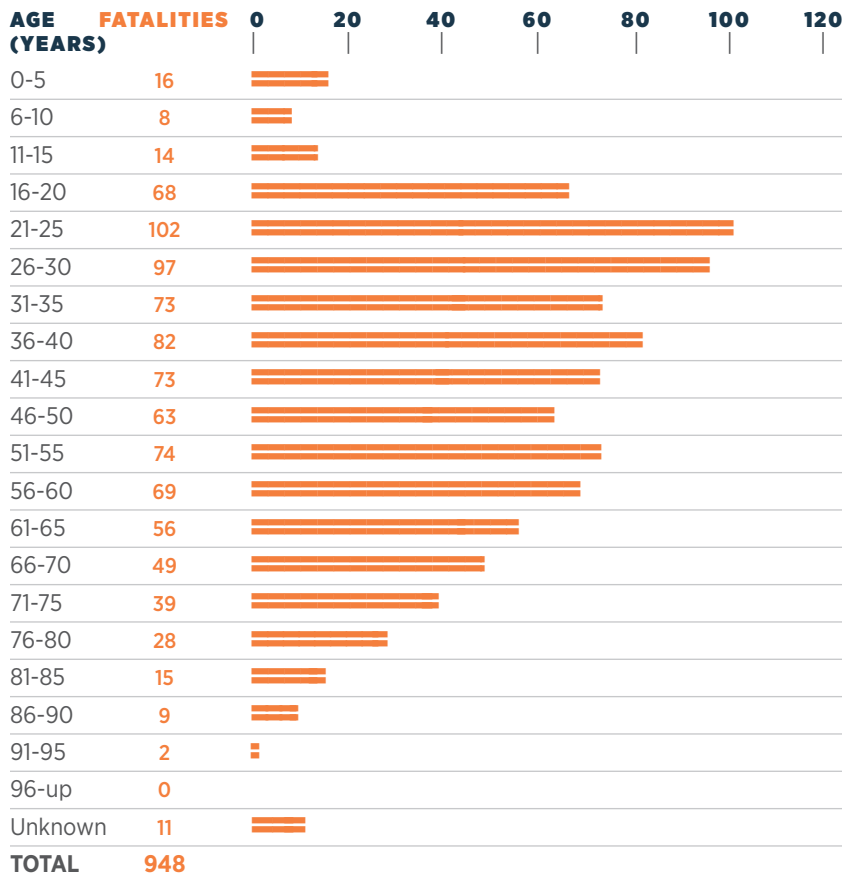
PERCENTAGE CAUSAL DRIVERS* INVOLVED IN ALL TRAFFIC CRASHES BY AGE AND GENDER

■ MALE ■ FEMALE



*The Causal Driver is the driver of the vehicle that was determined to have caused the traffic crash. Crashes for all vehicle types are included. Each crash has only one causal driver.

FATALITIES BY AGE



DRIVERS INVOLVED* IN ALL CRASHES AND FATAL CRASHES BY AGE

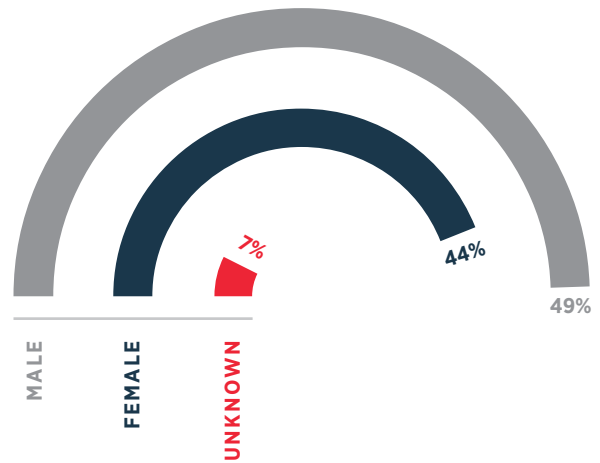
AGE	LICENSED	ALL CRASHES	FATAL CRASHES
0-14	100	111	3
15-19	251,842	28,789	94
20-24	326,209	37,014	139
25-29	348,030	31,017	138
30-34	314,700	26,302	109
35-39	305,288	23,708	105
40-44	292,354	20,652	102
45-49	318,445	20,160	99
50-54	322,102	18,952	95
55-59	339,828	18,110	89
60-64	320,638	15,175	81
65-69	277,414	11,616	53
70-74	221,901	8,017	49
>74	367,791	9,681	62
Unknown	0	22,287	52
TOTAL	4,006,642	291,591	1,270

*Involved drivers include both causal and victim drivers.

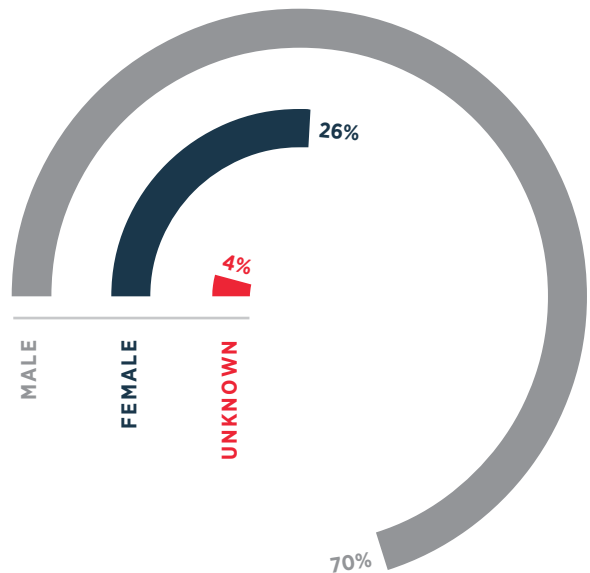
DRIVERS INVOLVED* IN ALL CRASHES AND FATAL CRASHES BY GENDER

GENDER	LICENSED	ALL CRASHES	FATAL CRASHES
Male	1,944,033	143,172	885
Female	2,062,609	128,407	335
Unknown	0	20,012	50
TOTAL	4,006,642	291,591	1,270

GENDER OF DRIVERS INVOLVED IN ALL CRASHES



GENDER OF DRIVERS INVOLVED IN FATAL CRASHES



CRASH Location

RURAL VS. URBAN TRAFFIC FATALITIES 10 YEAR DATA

YEAR	TOTAL	RURAL	URBAN	0	200	400	600	800	1000	1200
2008	964	647	317							
2009	848	526	322							
2010	862	514	348							
2011	899	542	357							
2012	870	495	375							
2013	852	521	331							
2014	821	510	311							
2015	849	508	341							
2016	1,089	660	429							
2017	948	580	368							

RURAL LOCALE

LOCALE TYPE	CRASHES	
Open Country	29,057	82.73%
Residential	3,231	9.20%
Shopping or Business	2,460	7.00%
Manufacturing or Industrial	184	0.52%
School	112	0.32%
Playground	3	0.01%
Other	76	0.22%
TOTAL	35,123	100.00%

CRASH LOCATION

LOCATION	CRASHES	
On Roadway	124,221	79.13%
Off Roadway	21,117	13.45%
Intersection	2,895	1.84%
Median	1,977	1.26%
Driveway	23	0.01%
Private Property	0	0.00%
Other	6,760	4.31%
TOTAL	156,993	100.00%

URBAN LOCALE

LOCALE TYPE	CRASHES	
Shopping or Business	71,647	58.79%
Residential	29,241	24.00%
Open Country	14,722	12.08%
Manufacturing or Industrial	2,575	2.11%
School	2,137	1.75%
Playground	46	0.04%
Other	1502	1.23%
TOTAL	121,870	100.00%

CAUSAL DRIVER'S RESIDENCE

RESIDENCE WITHIN 25 MILES	
Yes	67.64%
No	18.94%
Unknown	13.42%

MOST CRASHES OCCUR
within 25
miles of
THE CAUSAL DRIVER'S
home.

The number of **RURAL** fatalities decreased **12.12%** from 2016 to 2017 and **decreased 10.36%** from 2008 to 2017.

The number of **URBAN** fatalities decreased **14.22%** from 2016 to 2017 and **increased 16.09%** from 2008 to 2017.

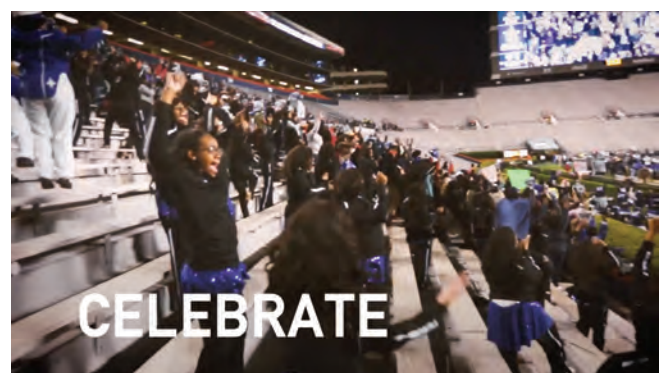
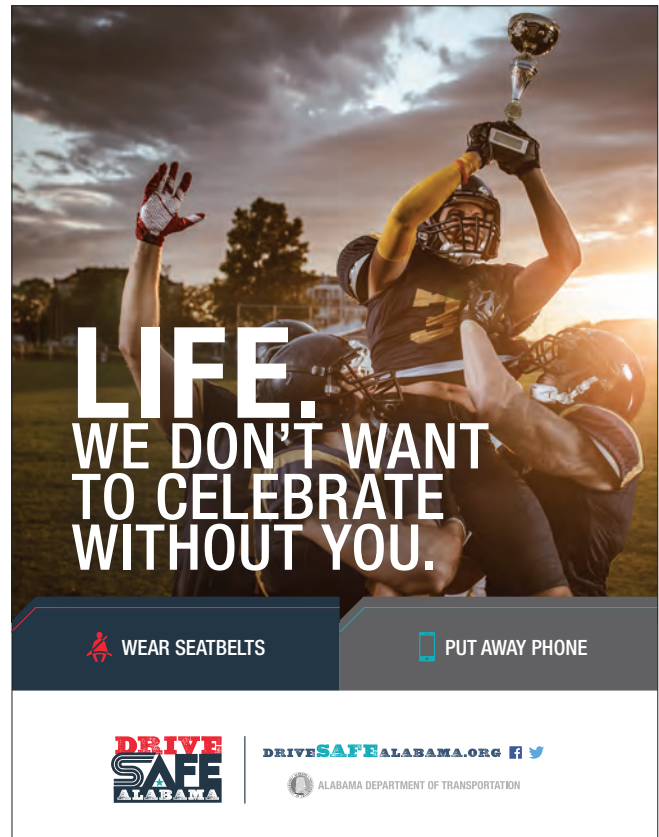
CELEBRATE LIFE Campaign

In the state of Alabama, 8 percent of all fatal crashes were caused by drivers 19 or under and 21 percent were caused by drivers under 25.

With motor vehicle crashes being the leading cause of death for people 15-19 years old, ALDOT created the relevant “Celebrate Life” PSA to reach Licensed Drivers 16-20.

THE PSA REACHED
71,000
ALABAMIANS
56 state final games where
70% of the audience
were
18 and under

In addition, the awareness created by the PSA during the state finals resulted in a 139.5% year-over-year increase in traffic to the Drive Safe initiatives web pages on DriveSafeAlabama.org.



Celebrate Life PSA
youtube.com/watch?v=pCdrg3IFpkw

CRASH Environment

TRAFFIC CONTROL

CONTROL TYPE	CRASHES		FATALITIES	
No Control Present	75,846	48.31%	482	50.85%
No Passing Zone	12,103	7.71%	285	30.06%
Traffic Signal	36,251	23.09%	51	5.38%
Stop Sign	13,372	8.52%	48	5.06%
Yield Sign	3,593	2.29%	3	0.32%
Railroad Device	155	0.10%	2	0.21%
Other	3,468	2.21%	49	5.17%
Not Stated	12,205	7.77%	28	2.95%
TOTAL	156,993	100%	948	100%

LIGHT CONDITION

CONDITION	CRASHES		FATALITIES	
Day	113,638	72.39%	441	46.52%
Dark	14,225	9.06%	324	34.17%
Streetlights	20,922	13.33%	131	13.82%
Dusk	4,636	2.95%	25	2.64%
Dawn	2,095	1.33%	16	1.69%
Other/Unknown	1,477	0.94%	11	1.16%
TOTAL	156,993	100%	948	100%

ROAD CURVATURE AND GRADE

CURVE/GRADE	CRASHES		FATALITIES	
Level	104,325	66.45%	439	46.31%
Curve on Hill	8,310	5.29%	146	15.40%
Level Curve	7,671	4.89%	139	14.66%
Downgrade	13,102	8.35%	111	11.71%
Upgrade	10,559	6.73%	62	6.54%
Hillcrest or Sag	1,390	0.88%	24	2.53%
Other/Unknown	11,636	7.41%	27	2.85%
TOTAL	156,993	100%	948	100%

NUMBER OF LANES

LANES	CRASHES		FATALITIES	
Two	67,595	43.05%	576	60.76%
Four	44,691	28.47%	253	26.69%
Six or More	15,885	10.12%	52	5.49%
Three	7,694	4.90%	19	2.00%
Five	5,621	3.58%	17	1.79%
One	3,291	2.10%	3	0.32%
Not Stated	12,216	7.78%	28	2.95%
TOTAL	156,993	100%	948	100%

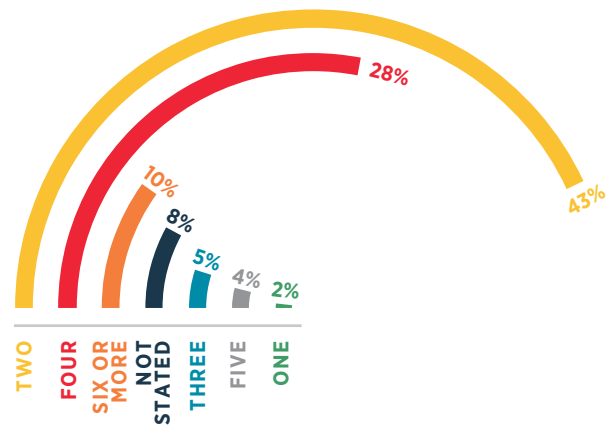
ROAD CONDITION

CONDITION	CRASHES		FATALITIES	
Dry	118,369	75.40%	784	82.70%
Wet	25,858	16.47%	134	14.14%
Icy/Slushy	965	0.61%	1	0.10%
Muddy	79	0.05%	0	0.00%
Other/Unknown	11,722	7.47%	29	3.06%
TOTAL	156,993	100%	948	100%

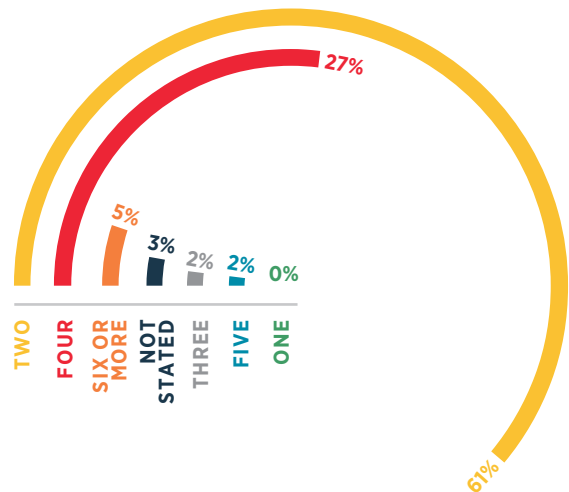
WEATHER

CONDITION	CRASHES		FATALITIES	
Clear	104,774	66.74%	631	66.56%
Cloudy	29,451	18.76%	188	19.83%
Rain	20,269	12.91%	93	9.81%
Fog	1,163	0.74%	24	2.53%
Snow/Sleet	748	0.48%	1	0.11%
Other	588	0.37%	11	1.16%
TOTAL	156,993	100%	948	100%

CRASHES PER NUMBER OF LANES



FATALITIES PER NUMBER OF LANES



Holiday CRASH STATISTICS

2016 VS. 2017

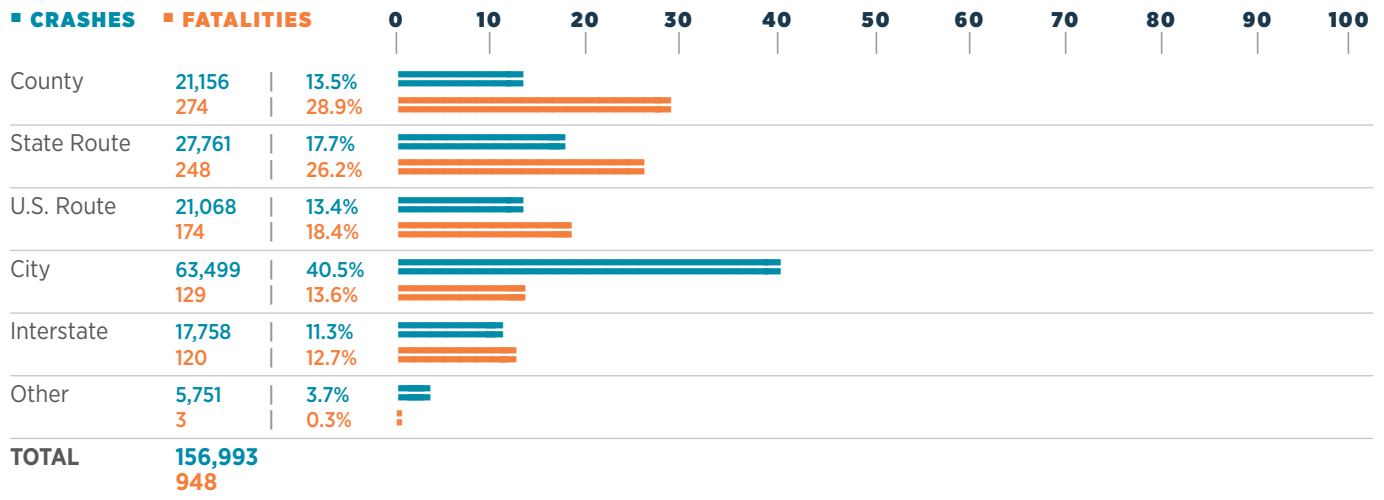
HOLIDAY	YEAR	FATALITIES	PERIOD	0	2	4	6	8	10	12	14	16	18
New Year	2016	12	6 pm, Wed., December 30, 2015 until 11:59 pm, Sat., January 2, 2016 (78 hrs)										
	2017	15	6 pm, Fri., December 30, 2016 until 11:59 pm, Mon., January 2, 2017 (78 hrs)										
Memorial Day	2016	10	6 pm, Fri., May 27, 2017 until 11:59 pm, Mon., May 30, 2017 (78 hrs)										
	2017	5	6 pm, Fri., May 26, 2017 until 11:59 pm, Mon., May 29, 2017 (78 hrs)										
July 4th	2016	13	6 pm, Fri., July 1, 2017 until 11:59 pm, Mon., July 4, 2017 (78 hrs)										
	2017	9	6 pm, Sat., July 1, 2017 until 11:59 pm, Tue., July 4, 2017 (78 hrs)										
Labor Day	2016	7	6 pm, Fri., September 2, 2017 until 11:59 pm, Mon., September 5, 2017 (78 hrs)										
	2017	5	6 pm, Fri., September 1, 2017 until 11:59 pm, Mon., September 4, 2017 (78 hrs)										
Thanksgiving	2016	17	6 pm, Wed., November 23, 2017 until 11:59 pm, Sun., November 27, 2017 (102 hrs)										
	2017	9	6 pm, Wed., November 22, 2017 until 11:59 pm, Sun., November 26, 2017 (102 hrs)										
Christmas	2016	14	6 pm, Fri., December 23, 2017 until 11:59 pm, Mon., December 26, 2017 (78 hrs)										
	2017	11	6 pm, Fri., December 22, 2017 until 11:59 pm, Tue., December 26, 2017 (102 hrs)										

*Note that the hours for each holiday period may vary from one year to the other.

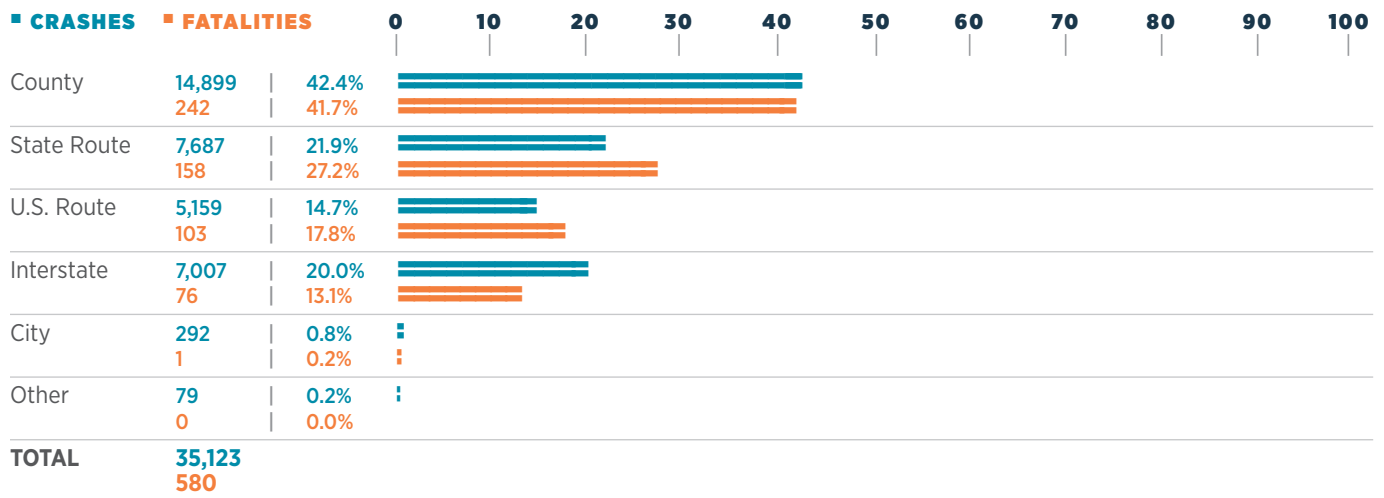


TYPE OF Roadway

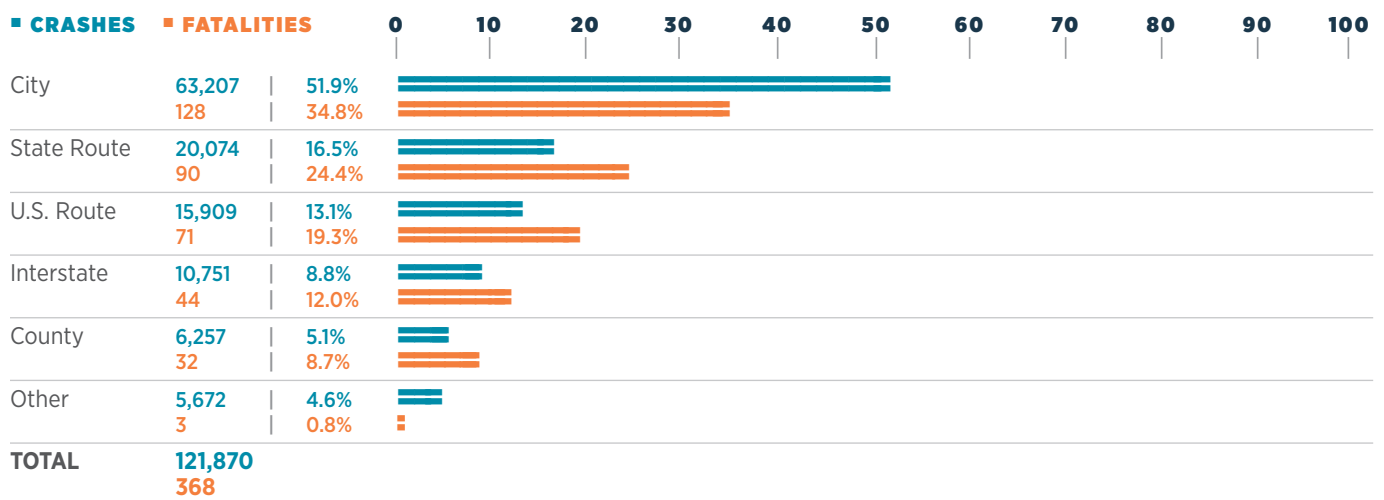
TOTAL FOR STATE



RURAL AREAS



URBAN AREAS



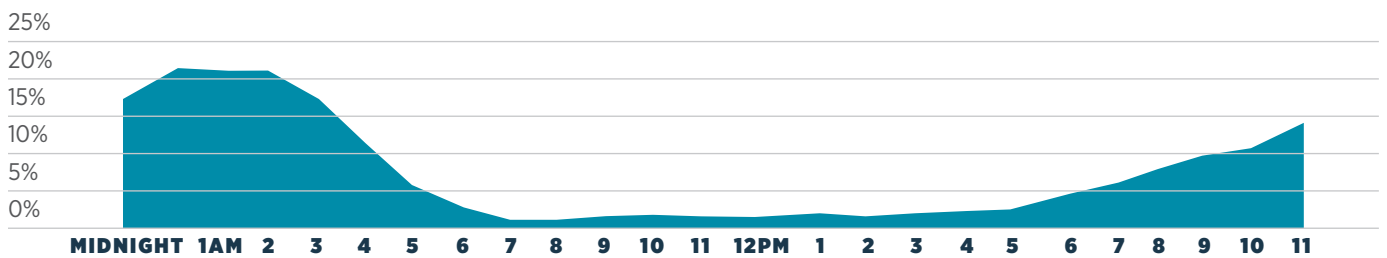
Alcohol and Drug INVOLVEMENT

DRIVERS SUSPECTED OF ALCOHOL OR DRUG IMPAIRMENT

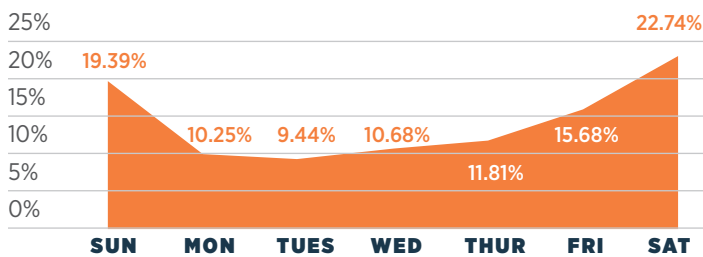
AGE	ALL*	MALE	FEMALE	UNKNOWN	0	100	200	300	400	500	600	700	800	900
0-14	1	1	0	0	:									
15-19	239	174	65	0	=====									
20-24	826	628	198	0	=====									
25-29	815	615	198	2	=====									
30-34	687	492	194	1	=====									
35-39	671	478	193	0	=====									
40-44	465	335	130	0	=====									
45-49	452	318	134	0	=====									
50-54	442	309	133	0	=====									
55-59	347	266	81	0	=====									
60-64	207	165	42	0	=====									
65-69	124	96	28	0	=====									
70-74	47	40	7	0	=====									
75-over	24	18	6	0	=====									
Unknown	124	35	3	86	=====									
TOTAL	5,471	3,970	1,412	89										

*All causal drivers suspected of alcohol or drug impairment.

IMPAIRED CRASHES BY TIME



IMPAIRED CRASHES BY DAY



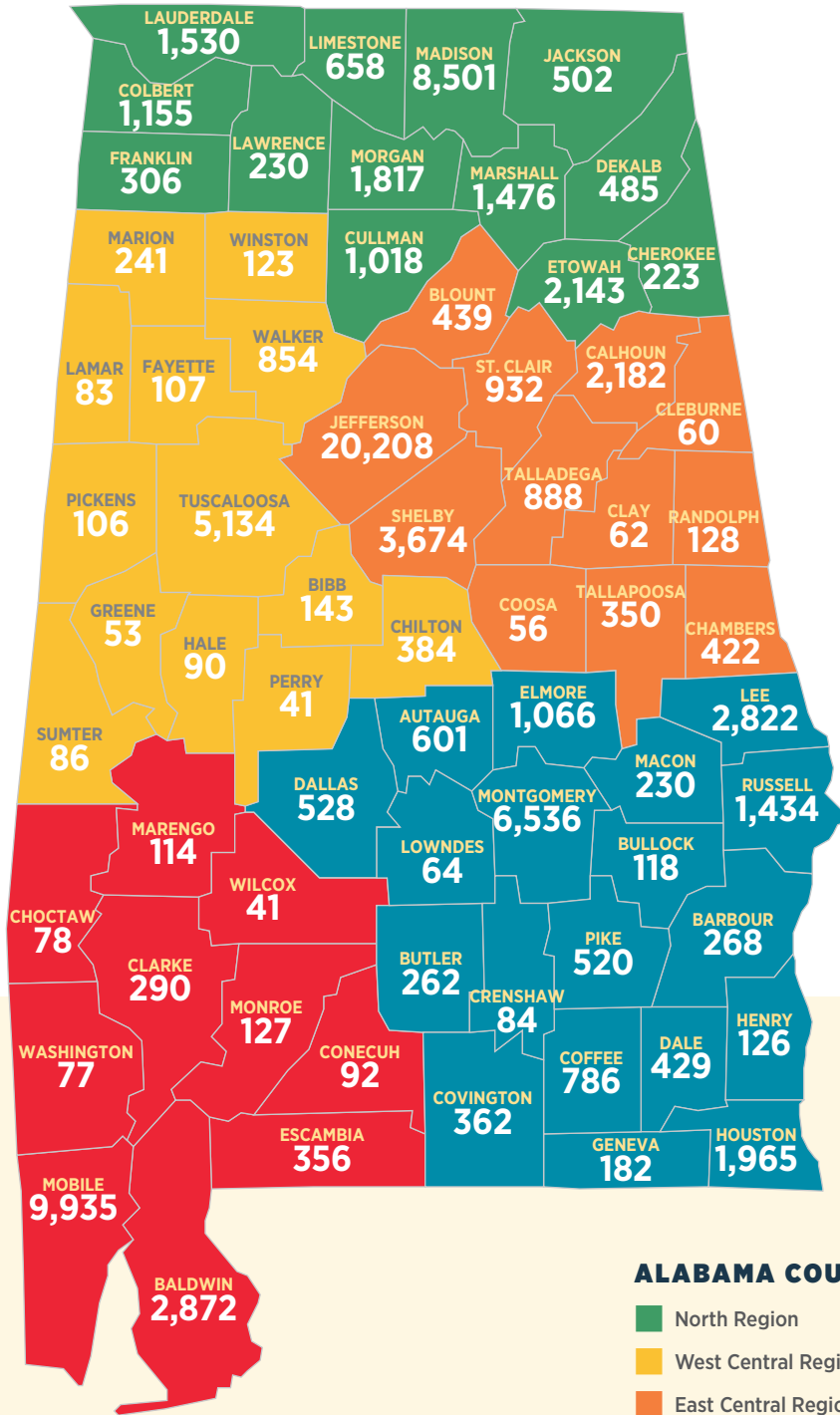
On average, **less than 1 percent of crashes end in a fatality**. However, for impaired crashes, the probability is much greater. The proportion of **fatality crashes involving impairment (3.13 percent) is 6.9 times that of crashes in general (0.45 percent)**, as reported in 2017.

There were **198 people** who died in **90 crashes** with **suspected alcohol or drug impairment**.



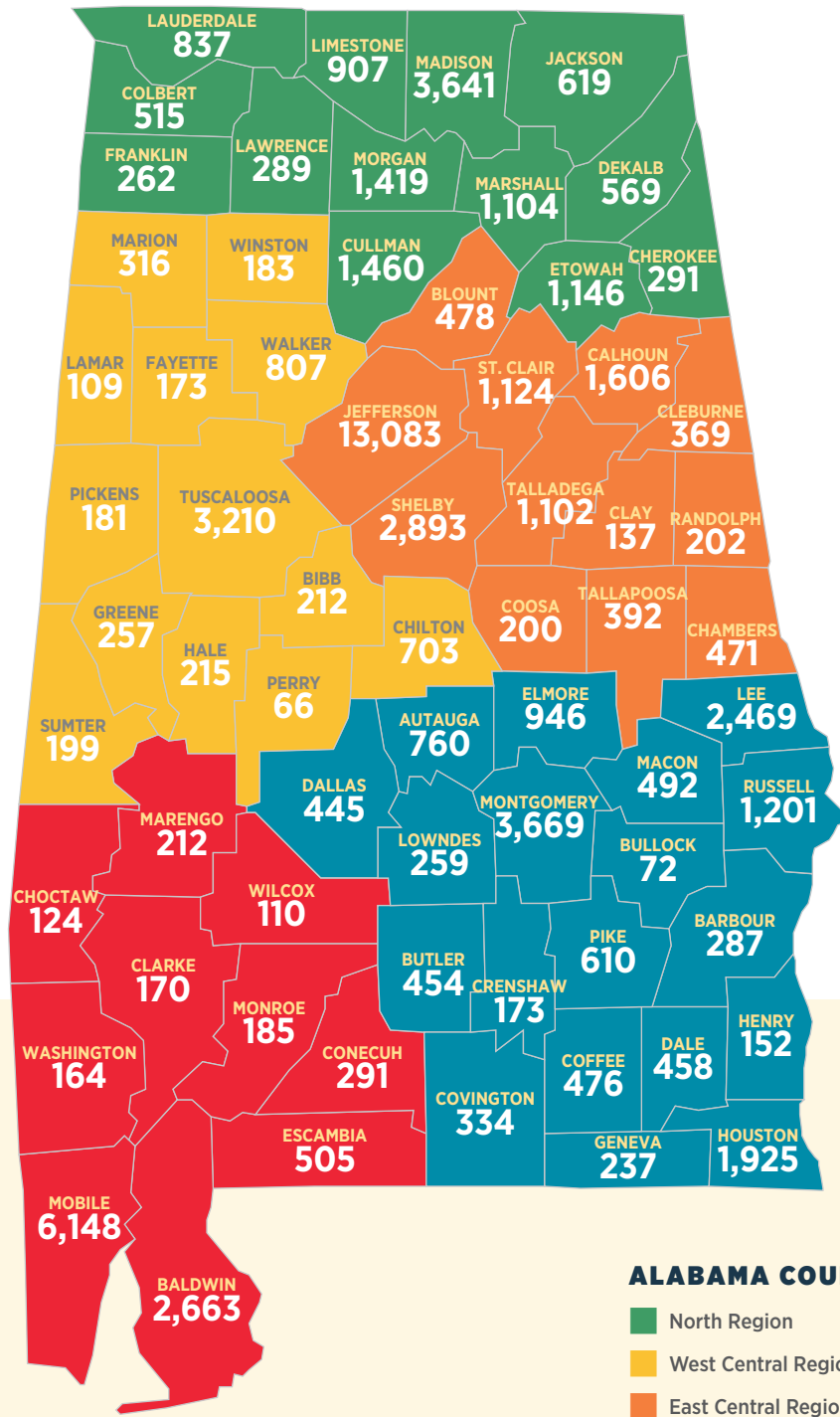
Intersection **CRASHES BY COUNTY**

TOTAL INTERSECTION-RELATED CRASHES 89,255



Non-Intersection **CRASHES BY COUNTY**

TOTAL NON-INTERSECTION-RELATED CRASHES 67,738



DRIVER CONTRIBUTING CIRCUMSTANCES WITH PERCENTAGE OF FATAL CRASHES TO ALL CRASHES

CIRCUMSTANCE	ALL CRASHES	FATAL CRASHES	0	0.5%	1%	1.5%	2%	2.5%	3%	3.5%	4%	4.5%	5%
Speeding	8,455	138											
Driving Under the Influence	4,024	90											
Ran off Road	3,777	81											
Failed to Yield Right of Way	23,304	56											
Improper Lane Change/Use	12,773	45											
Fatigued/Asleep	2,632	35											
Swerved to Avoid Vehicle/Object	7,345	35											
Failure to Heed Sign/Signal/Officer	5,920	34											
Wrong Side of Road	800	29											
Unseen Object/Person/Vehicle	10,629	29											
Tailgating	22,648	8											
Misjudged Stopping Distance	14,101	5											
Driver Not in Control	2	0											
All Other	40,583	272											
TOTAL	156,993	857											

There may be multiple contributing circumstances in each crash. The table above shows the primary cause determined by the officer reporting the crash.

Motorcycle CRASH STATISTICS

TEN YEAR DATA

YEAR	MOTORCYCLISTS	INJURIES	FATALITIES	0	500	1,000	1,500	2,000	2,500
2008	2,106	1,495	98						
2009	1,647	1,205	77						
2010	1,729	1,319	86						
2011	1,925	1,438	97						
2012	1,912	1,477	92						
2013	1,583	1,173	76						
2014	1,650	1,251	64						
2015	1,601	1,254	74						
2016	1,828	1,297	114						
2017	1,918	1,222	79						

MOTORCYCLE INVOLVED CRASHES BY AGE INCLUDES MOTOR SCOOTERS AND MOPEDS

AGE	CRASHES	INJURIES	FATALITIES
0-14	15	10	0
15-19	110	79	4
20-24	242	148	8
25-29	224	142	7
30-34	196	136	10
35-39	145	96	9
40-44	160	104	7
45-49	181	125	13
50-54	181	112	5
55-59	169	113	6
60-64	103	64	5
65-69	69	51	0
70-74	25	17	2
75-over	13	8	3
Unknown	85	17	0
TOTAL	1,918	1,222	79

75% of all fatal motorcycle crashes were caused by the motorcyclist.



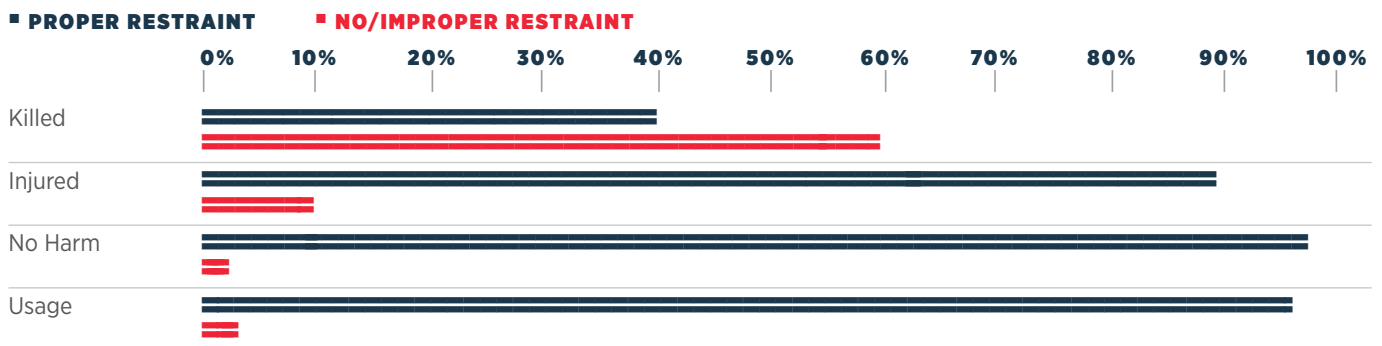
Safety Restraint **USAGE**

SAFETY RESTRAINT USAGE

RESTRAINT USED	SEVERITY		DRIVER		FRONT SEAT PASSENGER		BACK SEAT PASSENGER		TOTALS							
	KILLED	INJURED	NO HARM	SUBTOTAL	KILLED	INJURED	NO HARM	SUBTOTAL	KILLED	INJURED	NO HARM	SUBTOTAL				
Wearing Lap and Shoulder Belts	210	27,527	213,202	240,939	49	6,139	35,122	41,310	4	1,873	14,783	16,660	263	35,539	263,107	298,909
	0.09%	11.42%	88.49%	100%	0.12%	14.86%	85.02%	100%	0.03%	11.24%	88.73%	100%	0.09%	11.89%	88.02%	100%
	3	93	703	799	0	44	255	299	0	83	531	614	3	220	1,489	1,712
	0.38%	11.64%	87.98%	100%	0.00%	14.72%	85.28%	100%	0.00%	13.52%	86.48%	100%	0.18%	12.85%	86.97%	100%
Wearing Lap Belt Only	0	104	1,298	1,402	0	24	120	144	0	13	57	70	0	141	1,475	1,616
	0.00%	7.42%	92.58%	100%	0.00%	16.67%	83.33%	100%	0.00%	18.57%	81.43%	100%	0.00%	8.73%	91.27%	100%
	315	2,565	2,576	5,456	50	689	472	1,211	22	459	560	1,041	387	3,713	3,608	7,708
	5.77%	47.01%	47.22%	100%	4.13%	56.89%	38.98%	100%	2.11%	44.09%	53.80%	100%	5.02%	48.17%	46.81%	100%
None Used	41	1,706	9,186	10,933	7	343	948	1,298	2	186	546	734	50	2,235	10,680	12,965
	0.38%	15.60%	84.02%	100%	0.54%	26.42%	73.04%	100%	0.27%	25.34%	74.39%	100%	0.38%	17.24%	82.38%	100%

*Seat belt use for non-fatal injured passengers may be over-estimated because reporting officers have no way to make a direct observation. Additionally, 50 fatalities had unknown restraint use.

PERCENTAGE OF OCCUPANTS INVOLVED IN CRASHES



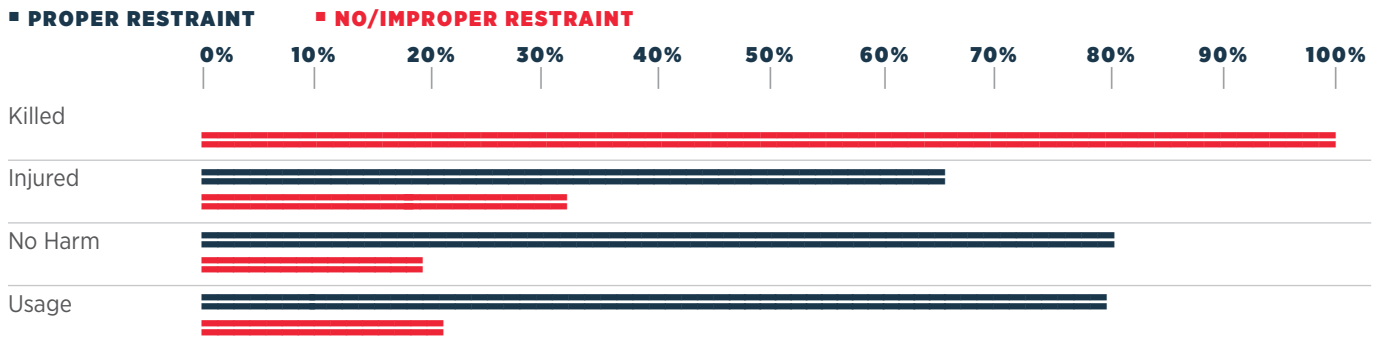
According to the crash reports, overall only **3.6 percent** of people involved in crashes were not using safety restraints; however **almost 60 percent** of all fatalities were not restrained.

In contrast, **97.6 percent** of people involved in crashes but not harmed were reported to have been **wearing their seat belts**.

CHILD RESTRAINT USAGE (UNDER 6 YEARS OLD)

RESTRAINT USED	SEVERITY	FRONT SEAT PASSENGER		BACK SEAT PASSENGER		TOTALS	
		Count	Percentage	Count	Percentage	Count	Percentage
Child Restraint Used	KILLED	0	0.00%	0	0.00%	0	0.00%
	INJURED	31	12.60%	635	7.21%	666	7.35%
	NO HARM	215	87.40%	8,178	92.79%	8,393	92.65%
	SUBTOTAL	246	100%	8,813	100%	9,059	100%
Child Restraint Used Improperly	KILLED	0	0.00%	7	0.35%	7	0.31%
	INJURED	41	17.15%	236	11.77%	277	12.35%
	NO HARM	198	82.85%	1,762	87.88%	1,960	87.34%
	SUBTOTAL	239	100%	2,005	100%	2,244	100%
None Used	KILLED	0	0.00%	5	3.43%	5	3.03%
	INJURED	8	42.11%	55	37.67%	63	38.18%
	NO HARM	11	57.89%	86	58.90%	97	58.79%
	SUBTOTAL	19	100%	146	100%	165	100%
Unknown	KILLED	0	0.00%	1	0.45%	1	0.40%
	INJURED	10	37.04%	42	18.83%	52	20.80%
	NO HARM	17	62.96%	180	80.72%	197	78.80%
	SUBTOTAL	27	100%	223	100%	250	100%

PERCENTAGE OF CHILD PASSENGERS INVOLVED IN CRASHES



According to the crash reports, overall, about **21 percent of children involved in crashes were not in a child restraint.**

About **80 percent of children involved in crashes but not harmed** were reported to have been **protected by child restraints.**



Bicycle CRASH STATISTICS

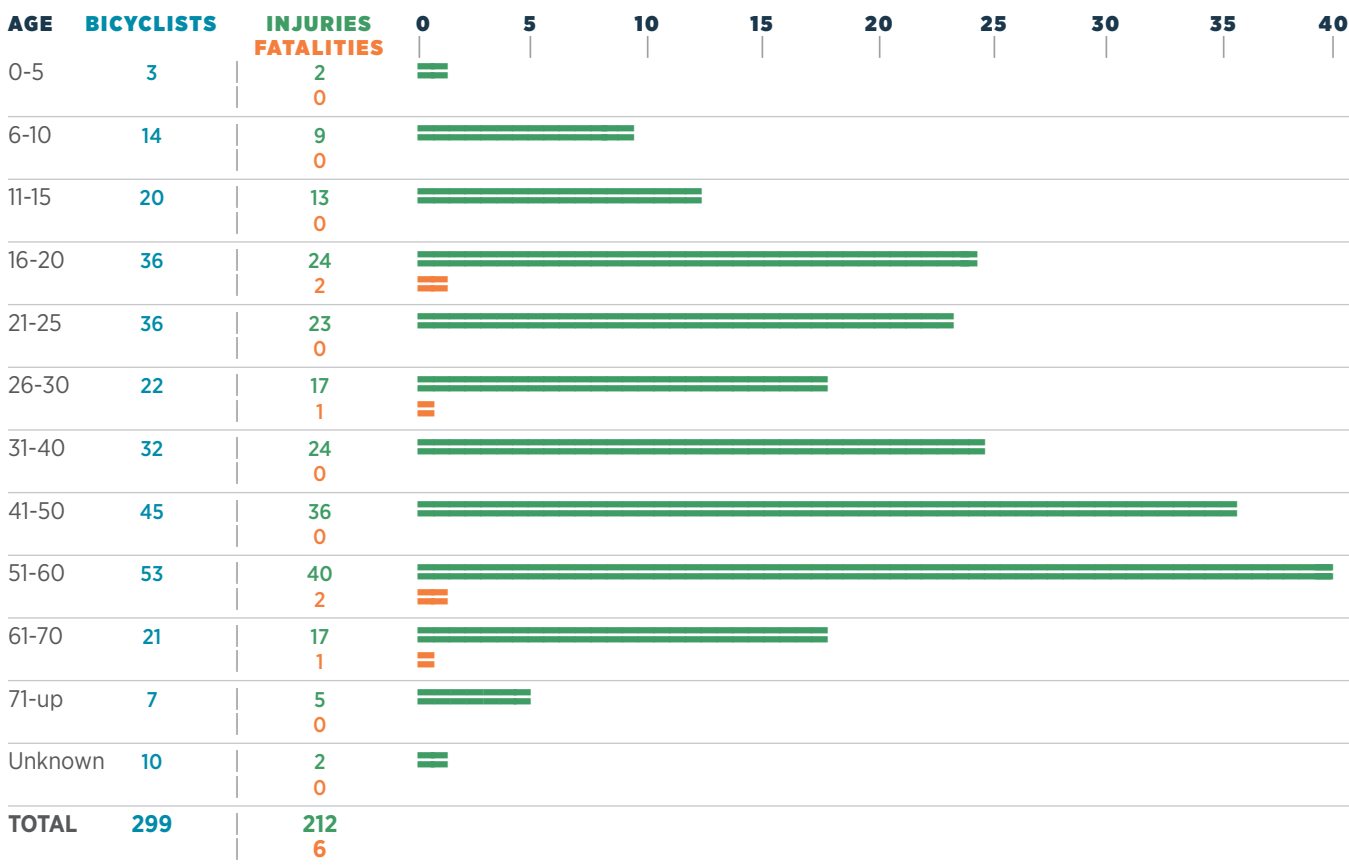
TEN YEAR DATA

YEAR	BICYCLISTS	INJURIES	FATALITIES
2008	236	182	4
2009	208	167	6
2010	232	169	5
2011	280	203	5
2012	278	225	9
2013	264	192	6
2014	203	195	8
2015	260	185	9
2016	290	214	4
2017	299	212	6

In 2017, **50 percent** of all bicycle crashes were caused by the bicyclist.

10% of all bicycle crashes occur on rural routes and **90%** of all bicycle crashes occur in urban streets.

BICYCLISTS INVOLVED IN CRASHES BY AGE



Pedestrian CRASH STATISTICS

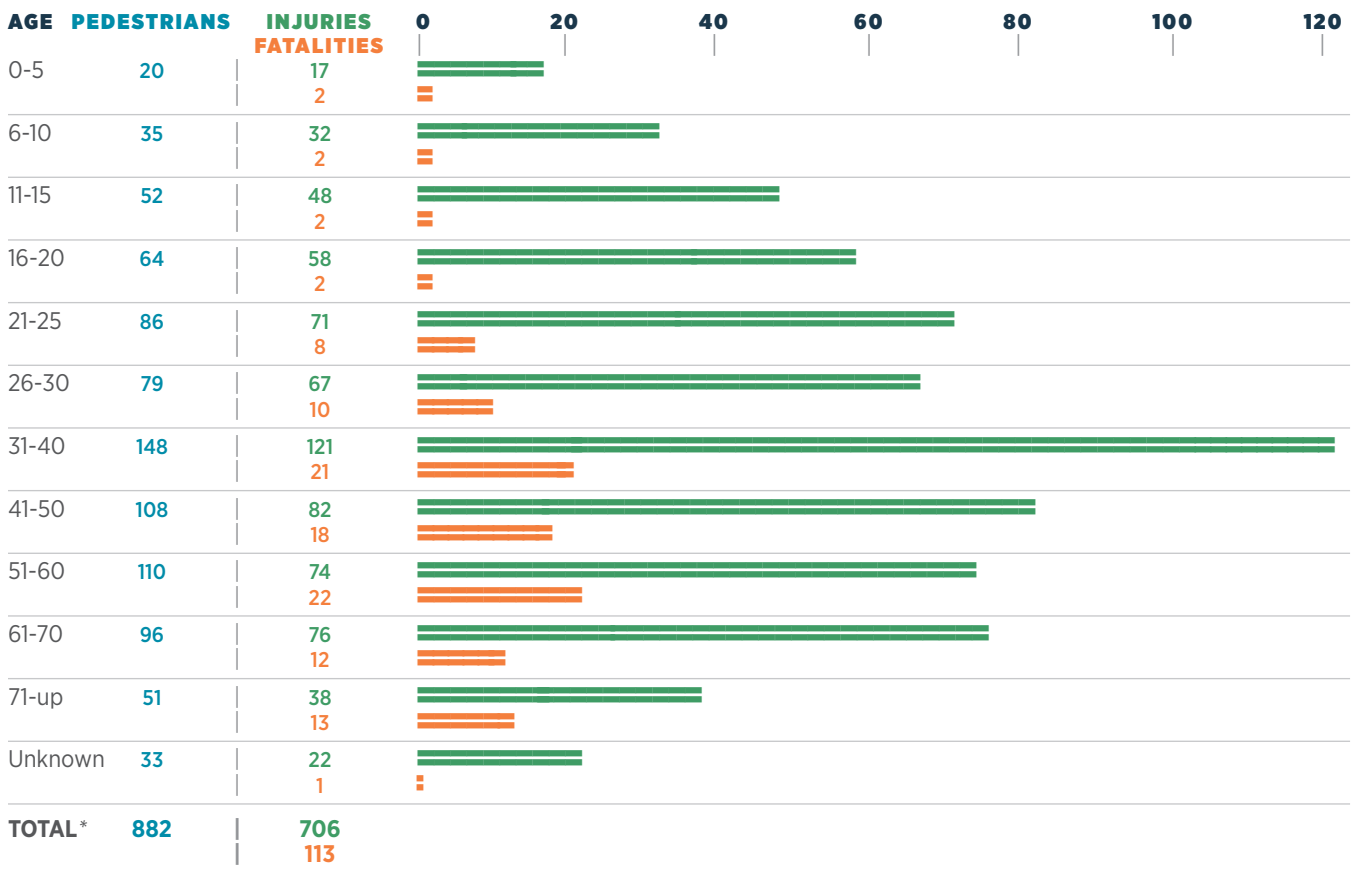
TEN YEAR DATA

YEAR	PEDESTRIANS	INJURIES	FATALITIES
2008	541	468	72
2009	604	511	65
2010	724	578	63
2011	741	589	84
2012	798	651	80
2013	757	639	57
2014	818	623	95
2015	834	656	96
2016	932	724	122
2017	882	706	113

In 2017, **66 percent** of all fatal pedestrian crashes were caused by the pedestrian.

Pedestrian fatalities have **increased 56.9 percent** since 2008.

PEDESTRIANS INVOLVED BY AGE AND SEVERITY



*Total number of pedestrians involved.



Train INVOLVED CRASH STATISTICS

TEN YEAR DATA



RAILROAD CRASHES

INJURY SEVERITY	PERSONS
Uninjured	34
Injured	23
Died	9
Unknown	0
TOTAL	66

THE NUMBER OF RAILROAD
injuries AND crashes
decreased
 IN 2017.

Driver behavior issues include ignoring flashing lights or other active warning devices, passing through barrier gates, and driving around already lowered gates/failure to observe passive warning devices.

According to NHTSA, **a motorist is almost 20 times more likely to die in a crash involving a train** than in a collision involving another motor vehicle.

Work Zone CRASH STATISTICS

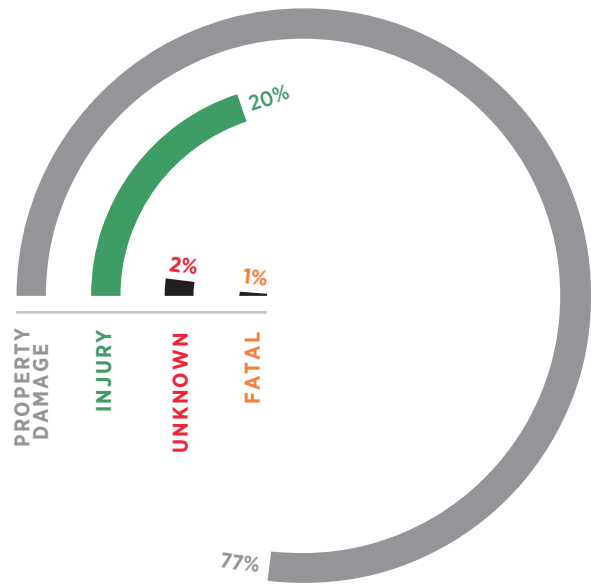
TEN YEAR DATA

YEAR	INJURY CRASHES	FATAL CRASHES
2008	472	16
2009	518	9
2010	621	19
2011	585	19
2012	477	23
2013	541	22
2014	504	21
2015	492	31
2016	652	18
2017	640	25

WORK ZONE CRASHES

CRASH SEVERITY	CRASHES
Property Damage	2,426
Injury	640
Fatal	25
Unknown	63
TOTAL	3,154

WORK ZONE CRASHES



Drivers need to be particularly alert when traveling through highway work zones. When a road is not in its usual condition due to construction, it is essential to slow down. Fines for speeding double in work zones when construction workers are present. Work zone crashes are dangerous to both highway workers and motorists. **Most work zone crashes are rear-end collisions, resulting from speeding or inattentive driving.**

ALDOT PROMOTES WORK ZONE AWARENESS IN APRIL OF EACH YEAR. ALABAMA'S THEME FOR

Work Zone Awareness

IN 2017 WAS

Work Zone Safety is in Your Hands.



Truck CRASH STATISTICS

TEN YEAR DATA

YEAR	TRUCKS INVOLVED	INJURIES	FATALITIES
2008	7,546	1,769	132
2009	6,704	1,615	84
2010	7,898	2,002	113
2011	6,927	1,715	92
2012	5,798	1,562	90
2013	7,322	1,982	116
2014	7,782	2,184	89
2015	8,484	2,367	118
2016	8,937	2,345	157
2017	9,351	2,563	101

PRIMARY CAUSE OF ALL CRASHES WITH TRUCK INVOLVEMENT*

PRIMARY CAUSE	CRASHES	
Improper Lane Change or Use	1,244	13.3%
Failed to Yield Right of Way	900	9.6%
Unseen Object, Person, or Vehicle	828	8.9%
Tailgating	705	7.5%
Misjudged Stopping Distance	462	4.9%
Defective Equipment	396	4.2%
Avoiding Animal, Object, or Person	335	3.6%
Improper Turn	335	3.6%
Improper Backing	313	3.4%
Failure to Heed Sign/Signal	249	2.7%
Crossed Median/Centerline	269	2.9%
Driving too Fast for Conditions	272	2.9%
Improper Passing	203	2.2%
Fatigued/Asleep	218	2.3%
Ran Off Road	188	2.0%
Driving Under the Influence	123	1.3%
Over the Speed Limit	84	0.9%
Unknown	448	4.8%
All Other	1,779	19.0%
TOTAL	9,351	100%

*There is no inference as to whether the truck or another type of vehicle was the cause of the crash.

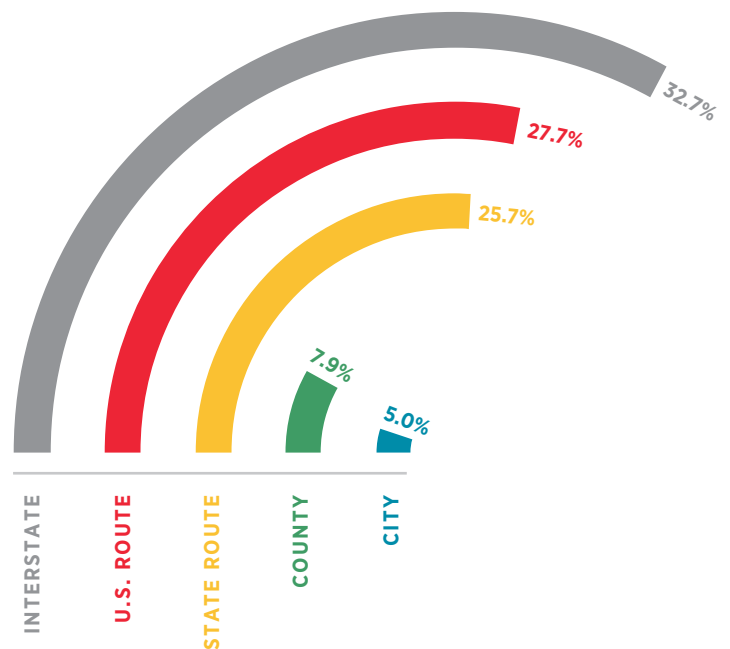
Truck Definition

A truck is defined as any vehicle heavier than a light truck or SUV, including delivery truck, 18 wheeler, tow truck, dually, or work truck. Truck does not include a bus of any type.

TOTAL FOR ALL CRASHES WITH TRUCK INVOLVEMENT

ROAD TYPE	CRASHES		FATALITIES	
Interstate	2,732	29.2%	33	32.7%
U.S. Route	1,467	15.7%	28	27.7%
State Route	1,690	18.1%	26	25.7%
County	847	9.1%	8	7.9%
City	2,299	24.6%	5	5.0%
Other	316	3.3%	1	1.0%
TOTAL	9,351	100%	101	100%

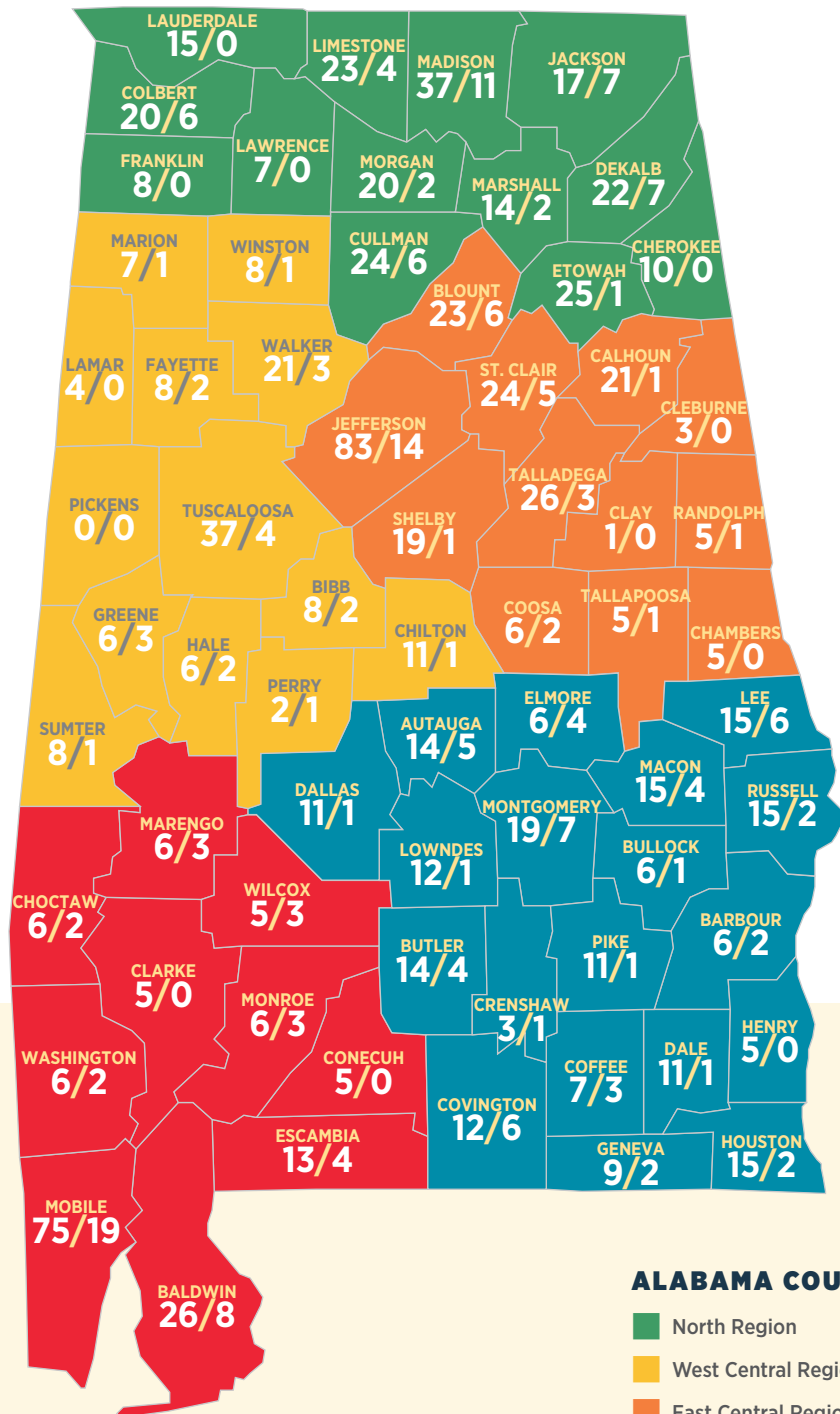
TRUCK INVOLVED FATALITIES BY ROAD TYPE



Fatalities **BY COUNTY**

TOTAL TRAFFIC FATALITIES 948 (First Figure)

TRAFFIC FATALITIES WITH APPARENT ALCOHOL OR DRUG INVOLVEMENT 198 (Second Figure)



ALABAMA COUNTY REGION KEY

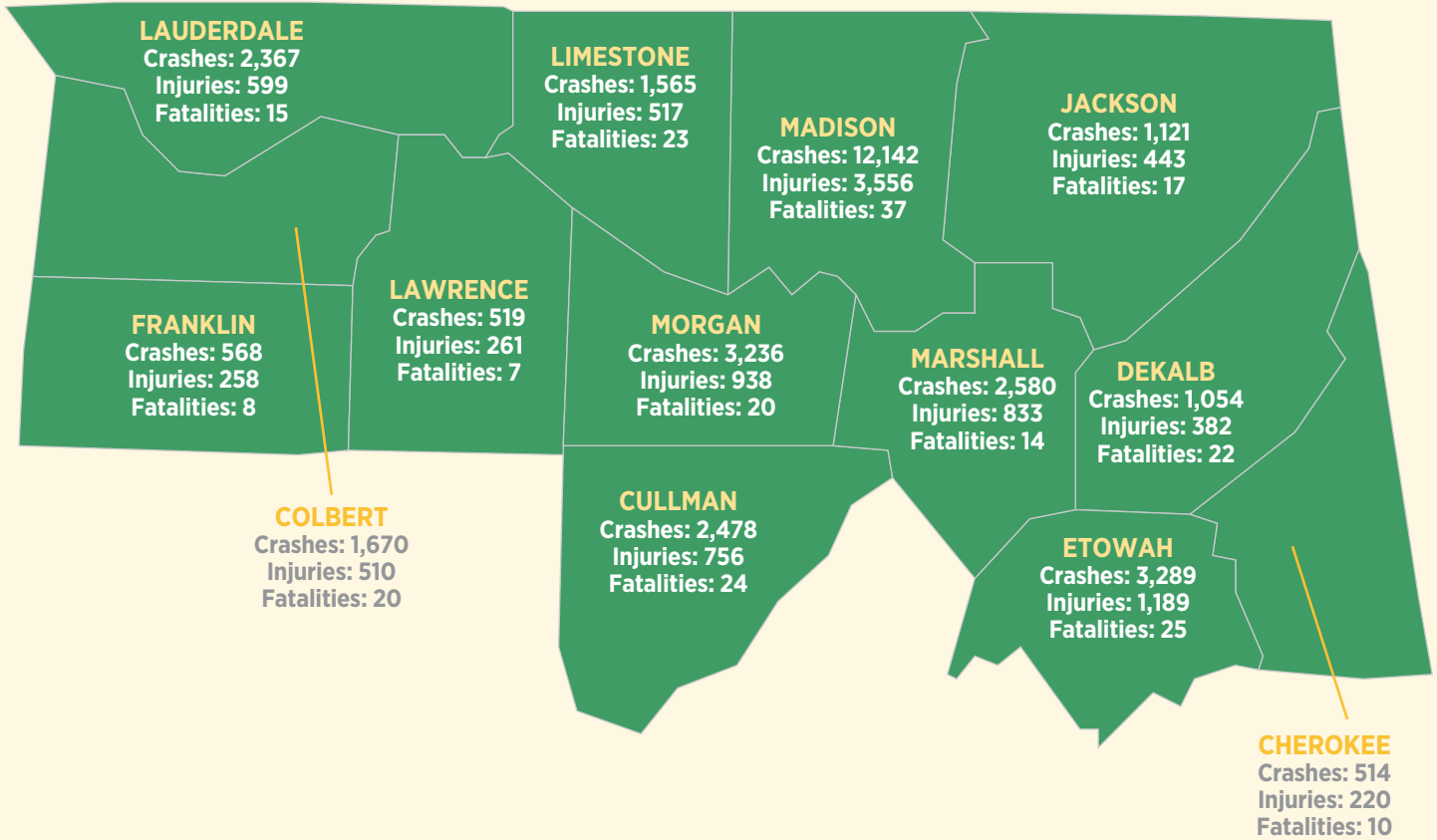
- North Region
- West Central Region
- East Central Region
- Southeast Region
- Southwest Region





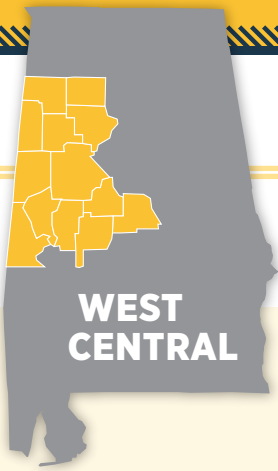
2017 Crashes by County

NORTH REGION STATISTICS



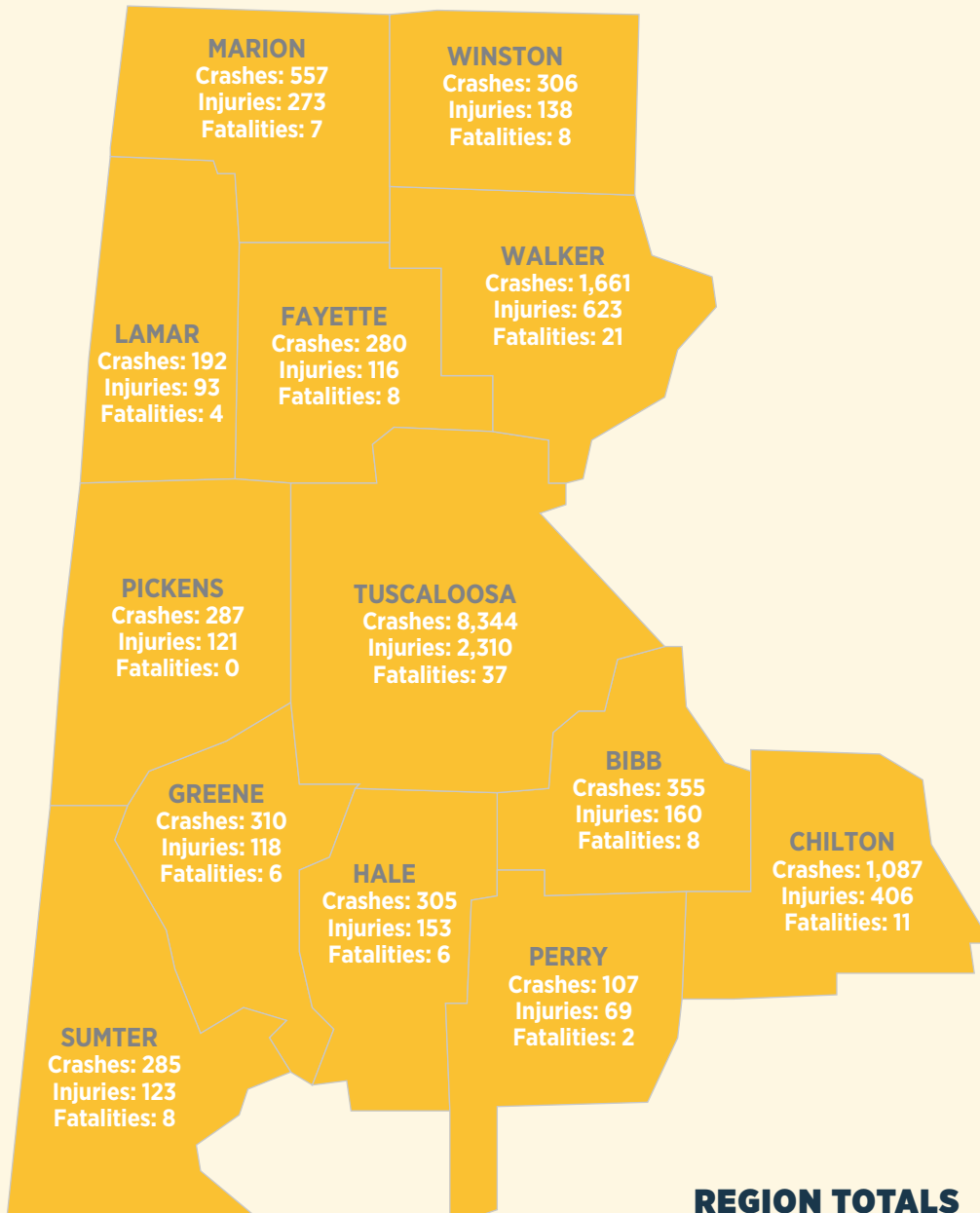
REGION TOTALS

TOTAL CRASHES	33,103
TOTAL INJURIES	10,462
TOTAL FATALITIES	242



2017 Crashes by County

WEST CENTRAL REGION STATISTICS



REGION TOTALS

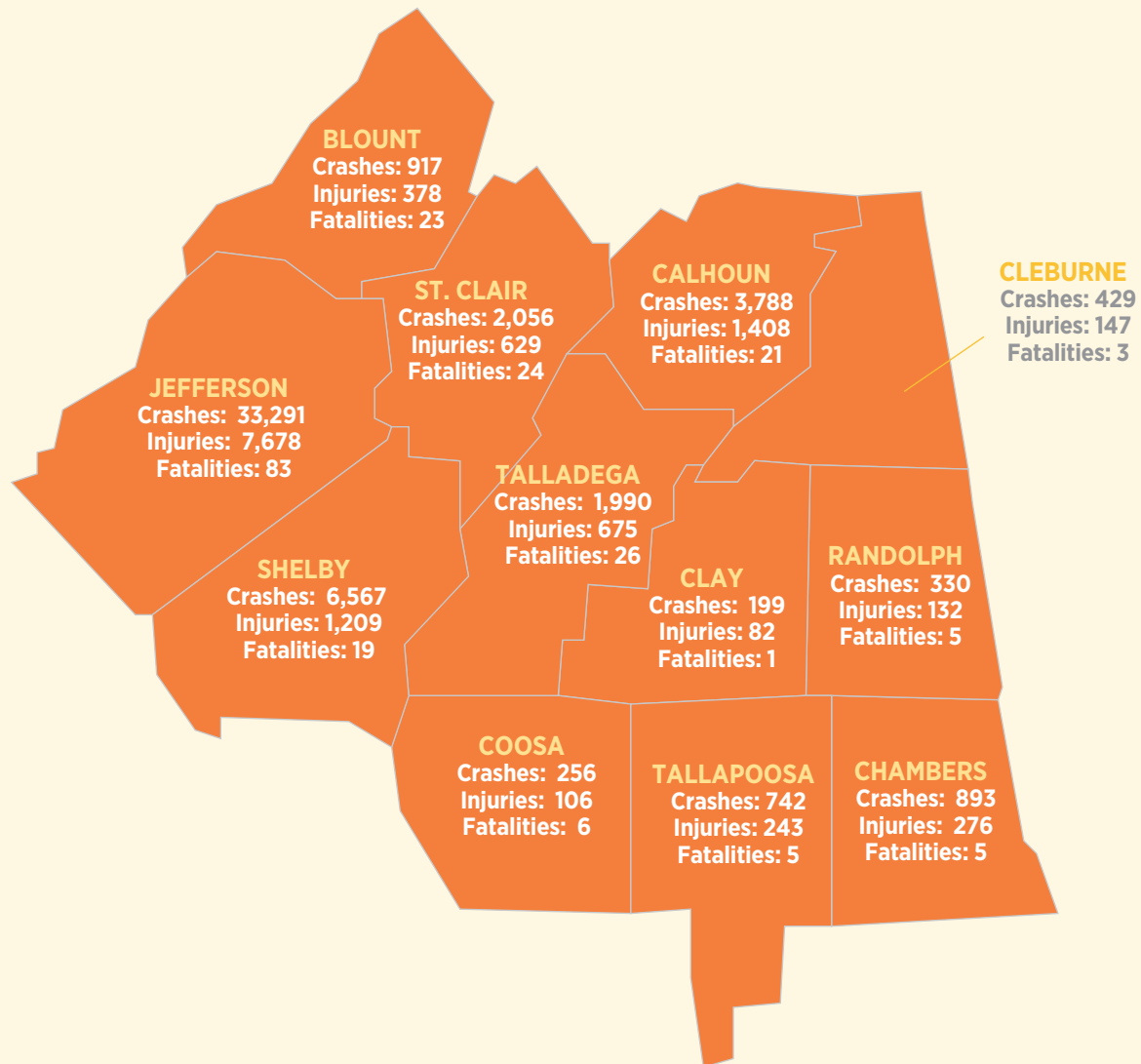
TOTAL CRASHES	14,076
TOTAL INJURIES	4,703
TOTAL FATALITIES	126





2017 Crashes by County

EAST CENTRAL REGION STATISTICS



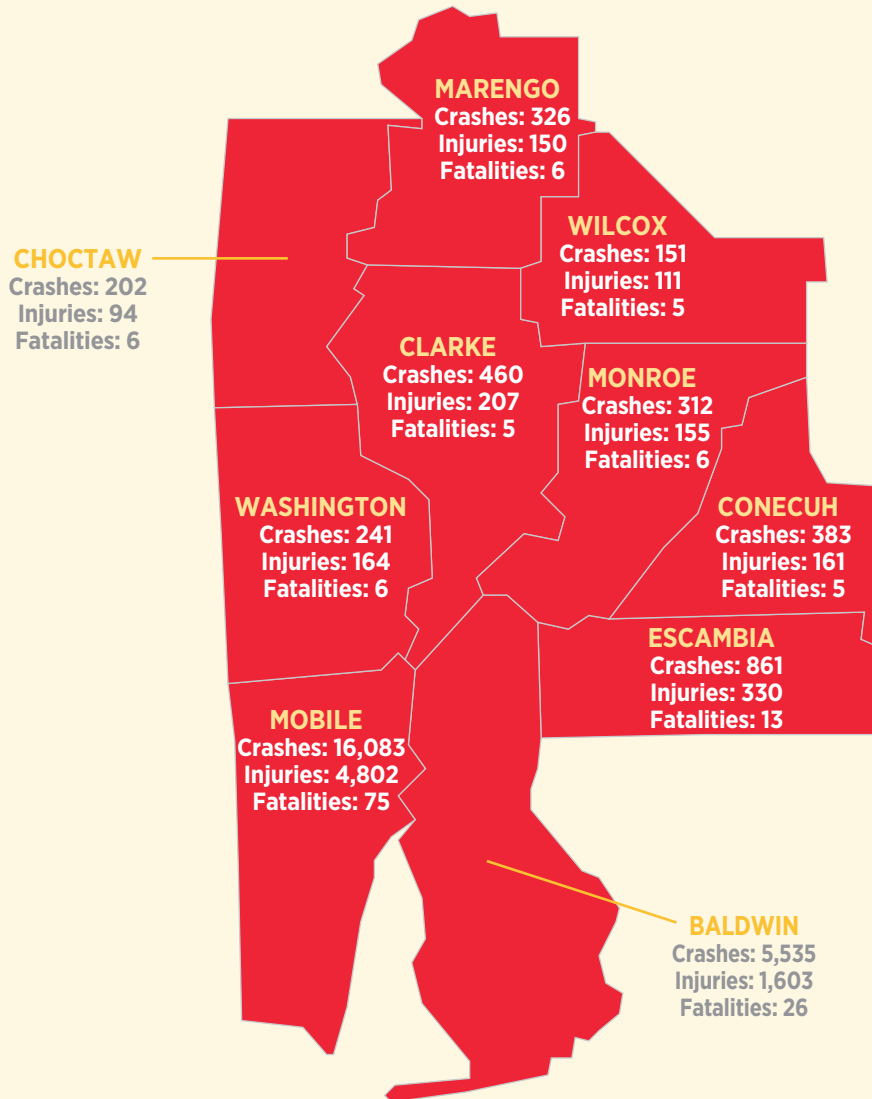
REGION TOTALS

TOTAL CRASHES	51,458
TOTAL INJURIES	12,963
TOTAL FATALITIES	221

2017 Crashes by County



SOUTHWEST REGION STATISTICS



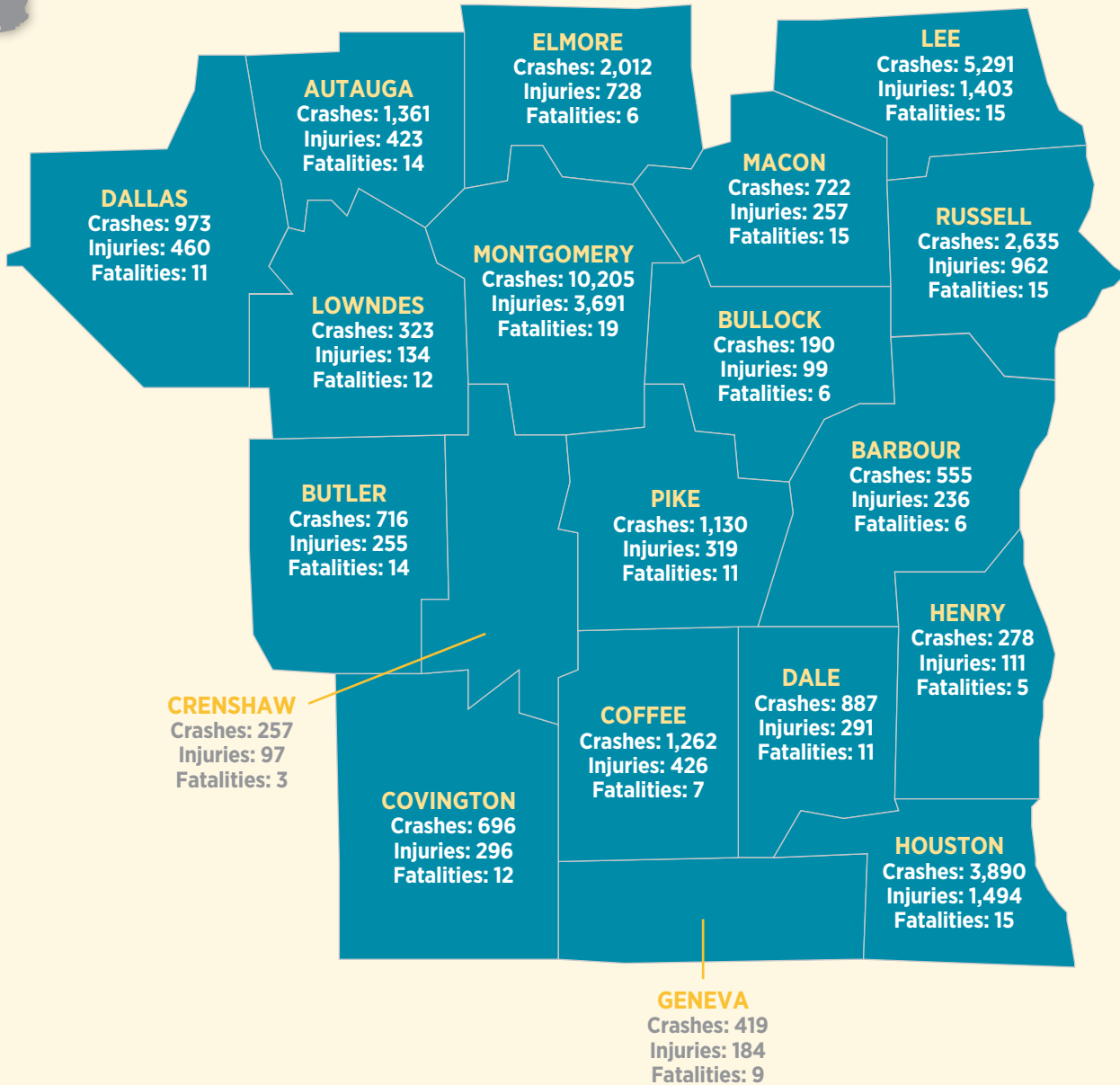
REGION TOTALS

TOTAL CRASHES	24,554
TOTAL INJURIES	7,777
TOTAL FATALITIES	153



2017 Crashes by County

SOUTHEAST REGION STATISTICS



REGION TOTALS

TOTAL CRASHES	33,802
TOTAL INJURIES	11,866
TOTAL FATALITIES	206

COMPARATIVE County Statistics

2016 VS. 2017

COUNTY	TOTAL CRASHES FOR COUNTY						URBAN AREAS OF COUNTY						RURAL AREAS OF COUNTY					
	NUMBER OF CRASHES		PERSONS KILLED		PERSONS INJURED		NUMBER OF CRASHES		PERSONS KILLED		PERSONS INJURED		NUMBER OF CRASHES		PERSONS KILLED		PERSONS INJURED	
	2016	2017	2016	2017	2016	2017	2016	2017	2016	2017	2016	2017	2016	2017	2016	2017	2016	2017
Jefferson	31,824	33,291	94	83	7,340	7,678	29,098	29,556	71	69	6,702	6,777	2,726	3,735	23	14	638	901
Mobile	15,922	16,083	78	75	4,534	4,802	13,871	14,025	42	37	3,696	4,014	2,051	2,058	36	38	838	788
Montgomery	10,167	10,205	38	19	3,623	3,691	9,376	9,407	28	14	3,365	3,392	791	798	10	5	258	299
Autauga	1,410	1,361	15	14	395	423	914	880	1	2	244	266	496	481	14	12	151	157
Baldwin	5,725	5,535	37	26	1,756	1,603	4,323	4,121	16	12	1,116	1,050	1,402	1,414	21	14	640	553
Barbour	555	555	5	6	193	236	408	425	3	3	126	172	147	130	2	3	67	64
Bibb	342	355	8	8	128	160	161	167	2	2	63	69	181	188	6	6	65	91
Blount	886	917	17	23	353	378	303	371	2	1	95	108	583	546	15	22	258	270
Bullock	189	190	4	6	92	99	103	116	1	3	34	48	86	74	3	3	58	51
Butler	707	716	14	14	244	255	323	343	3	1	97	107	384	373	11	13	147	148
Calhoun	3,762	3,788	26	21	1,374	1,408	2,770	2,695	6	7	904	908	992	1,093	20	14	470	500
Chambers	947	893	13	5	276	276	711	681	6	4	169	191	236	212	7	1	107	85
Cherokee	531	514	14	10	231	220	242	227	8	5	82	90	289	287	6	5	149	130
Chilton	1,025	1,087	21	11	348	406	469	508	4	4	148	145	556	579	17	7	200	261
Choctaw	181	202	6	6	97	94	86	72	1	2	35	22	95	130	5	4	62	72
Clarke	475	460	6	5	205	207	359	336	4	4	149	135	116	124	2	1	56	72
Clay	202	199	5	1	100	82	102	95	0	0	32	28	100	104	5	1	68	54
Cleburne	455	429	6	3	174	147	74	80	2	0	39	28	381	349	4	3	135	119
Coffee	1,290	1,262	15	7	460	426	942	975	3	1	263	277	348	287	12	6	197	149
Colbert	1,685	1,670	18	20	582	510	1,270	1,265	9	4	341	290	415	405	9	16	241	220
Conecuh	404	383	8	5	195	161	156	123	2	0	66	56	248	260	6	5	129	105
Coosa	255	256	10	6	118	106	34	39	2	0	13	13	221	217	8	6	105	93
Covington	664	696	8	12	275	296	415	443	5	6	166	166	249	253	3	6	109	130
Crenshaw	261	257	4	3	105	97	99	87	0	0	33	24	162	170	4	3	72	73
Cullman	2,413	2,478	25	24	717	756	1,334	1,313	5	5	306	334	1,079	1,165	20	19	411	422
Dale	967	887	13	11	331	291	720	634	5	9	218	167	247	253	8	2	113	124
Dallas	1,083	973	11	11	508	460	681	572	3	3	269	234	402	401	8	8	239	226
Dekalb	1,341	1,054	19	22	405	382	870	636	6	10	190	218	471	418	13	12	215	164
Elmore	2,020	2,012	20	6	733	728	1,380	1,383	7	1	532	507	640	629	13	5	201	221
Escambia	847	861	8	13	332	330	443	443	2	1	129	123	404	418	6	12	203	207
Etowah	3,395	3,289	30	25	1,270	1,189	2,933	2,794	18	16	1,061	959	462	495	12	9	209	230
Fayette	286	280	2	8	122	116	152	145	1	1	45	42	134	135	1	7	77	74
Franklin	577	568	4	8	239	258	327	311	1	2	117	129	250	257	3	6	122	129
Geneva	452	419	2	9	139	184	230	188	1	1	54	85	222	231	1	8	85	99
Greene	290	310	5	6	129	118	43	50	0	1	34	19	247	260	5	5	95	99
Hale	309	305	5	6	170	153	149	134	2	0	78	51	160	171	3	6	92	102
Henry	284	278	6	5	110	111	163	158	1	1	47	59	121	120	5	4	63	52
Houston	3,734	3,890	27	15	1,401	1,494	3,267	3,408	16	12	1,185	1,288	467	482	11	3	216	206
Jackson	1,106	1,121	17	17	411	443	771	781	5	10	236	279	335	340	12	7	175	164



COMPARATIVE County Statistics

2016 VS. 2017 (continued)

COUNTY	TOTAL CRASHES FOR COUNTY						URBAN AREAS OF COUNTY						RURAL AREAS OF COUNTY					
	NUMBER OF CRASHES		PERSONS KILLED		PERSONS INJURED		NUMBER OF CRASHES		PERSONS KILLED		PERSONS INJURED		NUMBER OF CRASHES		PERSONS KILLED		PERSONS INJURED	
	2016	2017	2016	2017	2016	2017	2016	2017	2016	2017	2016	2017	2016	2017	2016	2017	2016	2017
Lamar	176	192	2	4	88	93	81	100	0	1	38	48	95	92	2	3	50	45
Lauderdale	2,351	2,367	13	15	640	599	1,721	1,772	4	5	370	381	630	595	9	10	270	218
Lawrence	515	519	9	7	230	261	132	152	1	0	43	63	383	367	8	7	187	198
Lee	5,465	5,291	18	15	1,347	1,403	4,652	4,460	9	6	1,054	1,083	813	831	9	9	293	320
Limestone	1,591	1,565	28	23	534	517	731	633	4	2	187	197	860	932	24	21	347	320
Lowndes	350	323	4	12	146	134	31	47	1	3	13	29	319	276	3	9	133	105
Macon	744	722	13	15	260	257	228	223	1	0	92	78	516	499	12	15	168	179
Madison	12,121	12,142	47	37	3,684	3,556	10,214	10,138	29	23	2,994	2,822	1,907	2,004	18	14	690	734
Marengo	328	326	8	6	158	150	181	164	2	2	45	50	147	162	6	4	113	100
Marion	493	557	6	7	230	273	332	342	3	3	125	145	161	215	3	4	105	128
Marshall	2,691	2,580	22	14	821	833	2,092	1,989	6	9	537	494	599	591	16	5	284	339
Monroe	381	312	7	6	211	155	209	159	0	1	108	67	172	153	7	5	103	88
Morgan	3,317	3,236	14	20	930	938	2,652	2,561	8	9	659	633	665	675	6	11	271	305
Perry	113	107	4	2	74	69	40	32	2	0	30	25	73	75	2	2	44	44
Pickens	282	287	6	0	126	121	127	139	1	0	45	46	155	148	5	0	81	75
Pike	1,135	1,130	5	11	346	319	812	797	0	0	208	181	323	333	5	11	138	138
Randolph	349	330	5	5	144	132	185	173	1	1	67	38	164	157	4	4	77	94
Russell	2,634	2,635	30	15	905	962	2,091	2,137	6	3	609	702	543	498	24	12	296	260
St. Clair	2,051	2,056	20	24	635	629	1,305	1,266	6	6	329	353	746	790	14	18	306	276
Shelby	6,304	6,567	25	19	1,383	1,209	4,794	5,165	14	9	952	870	1,510	1,402	11	10	431	339
Sumter	273	285	4	8	126	123	90	87	0	2	43	20	183	198	4	6	83	103
Talladega	1,900	1,990	30	26	762	675	1,048	1,061	10	5	327	321	852	929	20	21	435	354
Tallapoosa	696	742	15	5	247	243	474	530	7	2	154	171	222	212	8	3	93	72
Tuscaloosa	8,417	8,344	49	37	2,434	2,310	6,621	6,536	16	17	1,797	1,717	1,796	1,808	33	20	637	593
Walker	1,601	1,661	23	21	597	623	928	958	2	3	268	243	673	703	21	18	329	380
Washington	197	241	4	6	131	164	47	58	1	0	30	32	150	183	3	6	101	132
Wilcox	165	151	3	5	126	111	69	49	0	0	51	36	96	102	3	5	75	75
Winston	299	306	11	8	123	138	156	155	1	1	52	47	143	151	10	7	71	91
TOTAL	155,907	156,993	1,089	948	47,653	47,771	122,115	121,870	429	367	33,706	33,762	33,792	35,123	660	581	13,947	14,009

COMPARATIVE City Statistics

2016 VS. 2017

CITY	NUMBER OF CRASHES		PERSONS KILLED		PERSONS INJURED	
	2016	2017	2016	2017	2016	2017
Abbeville	63	54	1	0	21	25
Adamsville	165	190	3	0	74	66
Addison	14	16	0	0	4	4
Akron	3	1	0	0	2	2
Alabaster	1,050	1,200	0	2	237	209
Albertville	893	861	2	4	221	191
Alexander City	273	335	2	2	75	86
Aliceville	32	23	1	0	13	11
Allgood	2	4	0	0	1	0
Altoona	19	16	1	0	12	6
Andalusia	222	254	0	1	69	80
Anderson	6	3	0	0	1	1
Anniston	1,331	1,310	3	6	441	461
Arab	198	203	0	1	43	48
Ardmore	38	47	0	1	7	12
Argo	64	61	0	0	14	13
Ariton	10	5	1	0	2	1
Arley	3	0	0	0	0	0
Ashford	50	48	1	0	27	24
Ashland	57	60	0	0	23	22
Ashville	117	139	0	3	45	58
Athens	428	355	0	0	106	100
Atmore	142	149	0	0	50	49
Attalla	268	280	3	2	86	88
Auburn	2,017	2,074	5	0	429	512
Autaugaville	10	10	0	0	3	2
Avon	2	2	0	0	0	1
Babbie	2	2	0	0	0	1
Baileyton	12	18	1	1	3	10
Bakerhill	11	7	0	1	7	6
Banks	2	3	0	0	1	3
Bay Minette	173	188	0	0	51	75
Bayou La Batre	83	56	0	0	28	28
Bear Creek	19	17	1	0	13	11
Beatrice	4	3	0	0	1	1
Beaverton	4	2	0	0	12	0
Belk	1	1	0	0	1	1
Bellwood	2	6	0	0	0	5
Benton	1	1	0	0	0	0
Berry	17	10	1	0	11	2

CITY	NUMBER OF CRASHES		PERSONS KILLED		PERSONS INJURED	
	2016	2017	2016	2017	2016	2017
Bessemer	1,632	1,644	7	10	432	444
Big Cove	1	2	0	0	1	3
Billingsley	1	1	0	0	0	0
Birmingham	18,329	18,589	44	43	4,250	4,393
Black	1	1	0	0	0	0
Blountsville	27	28	0	0	9	12
Blue Mountain	1	0	0	0	2	0
Blue Springs	2	0	0	0	1	0
Boaz	426	401	2	3	131	146
Boligee	0	1	0	0	0	0
Bon Air	1	0	0	0	0	0
Branchville	7	0	0	0	1	0
Brantley	11	11	0	0	2	0
Brent	45	55	1	0	19	23
Brewton	213	197	1	0	56	49
Bridgeport	33	37	0	1	19	12
Brighton	12	15	0	0	5	3
Brilliant	10	14	0	0	5	9
Brookside	5	5	0	0	2	2
Brookwood	51	56	1	1	18	20
Brownsville	0	0	0	0	0	0
Brundidge	65	62	0	0	23	19
Butler	50	42	1	1	23	9
Calera	553	638	4	3	93	103
Camden	32	26	0	0	27	26
Camp Hill	24	21	4	0	16	16
Carbon Hill	18	25	1	0	7	13
Cardiff	0	0	0	0	0	0
Carolina	4	2	0	0	1	2
Carrollton	27	28	0	0	8	7
Carrville	0	0	0	0	0	0
Castleberry	10	4	0	0	4	0
Cedar Bluff	40	31	0	1	9	22
Center Point	3	21	0	1	1	3
Centre	143	143	1	4	44	48
Centreville	51	45	0	0	25	22
Chatom	19	22	0	0	10	11
Chelsea	168	159	2	0	34	34
Cherokee	21	16	1	1	8	19
Chickasaw	124	138	0	0	32	33



COMPARATIVE City Statistics

2016 VS. 2017 (continued)

CITY	NUMBER OF CRASHES		PERSONS KILLED		PERSONS INJURED	
	2016	2017	2016	2017	2016	2017
Childersburg	43	85	3	1	22	29
Citronelle	120	108	0	1	41	35
Clanton	341	382	3	3	102	108
Clay	0	12	0	0	0	3
Clayhatchee	2	1	0	1	0	0
Clayton	10	13	1	1	2	8
Cleveland	17	17	0	0	3	2
Clio	9	8	0	0	8	4
Coaling	45	38	2	1	17	20
Coffee Springs	1	1	0	0	0	0
Coffeetown	9	14	0	1	3	7
Collinsville	41	44	0	0	10	7
Colony	2	0	0	0	1	0
Columbia	10	12	0	1	5	4
Columbiana	115	88	0	0	34	30
Coosada	56	39	0	0	31	21
Cordova	12	13	0	0	2	5
Cottonwood	11	22	0	0	4	6
County Line-Jeff	2	1	0	0	0	1
Courtland	1	3	0	0	1	0
Cowarts	20	22	0	0	11	16
Creola	70	67	3	0	13	26
Crossville	45	34	1	1	14	8
Cuba	3	8	0	0	5	6
Cullman	1,007	992	3	0	204	230
Dadeville	95	93	0	0	31	29
Daleville	140	118	0	0	34	30
Daphne	975	942	5	3	202	207
Dauphin Island	21	21	0	0	6	11
Daviston	0	1	0	0	0	0
Dayton	0	0	0	0	0	0
Deatsville	2	2	0	0	1	2
Decatur	2,122	1,980	4	6	535	506
Demopolis	128	115	0	0	27	38
Detroit	0	0	0	0	0	0
Dodge City	48	61	0	0	10	21
Dora	82	66	0	0	23	7
Dothan	3,098	3,216	14	8	1,083	1,202
Double Springs	23	25	0	0	8	8
Douglas	29	20	0	0	9	4

CITY	NUMBER OF CRASHES		PERSONS KILLED		PERSONS INJURED	
	2016	2017	2016	2017	2016	2017
Dozier	2	2	0	0	0	0
Dutton	6	6	1	0	3	5
East Brewton	46	39	0	0	15	11
Eclectic	38	38	0	0	18	18
Edwardsville	2	5	0	0	1	3
Elba	39	49	0	0	11	11
Elberta	78	71	0	1	31	29
Eldridge	2	0	0	0	0	0
Elkmont	0	3	0	0	0	0
Elmore	22	23	0	0	14	7
Emelle	1	1	0	0	0	0
Enterprise	883	908	3	1	239	262
Epes	0	0	0	0	0	0
Ethelsville	0	0	0	0	0	0
Eufaula	374	395	2	1	108	154
Eunola	2	1	0	0	0	1
Eutaw	43	46	0	1	34	16
Eva	3	5	0	0	2	3
Evergreen	140	115	2	0	57	51
Excel	17	12	0	0	6	5
Fairfield	350	352	1	2	107	95
Fairhope	578	571	0	1	124	154
Fairview	16	22	0	1	8	14
Falkville	30	44	0	0	7	14
Faunsdale	1	2	0	0	2	0
Fayette	124	126	0	0	27	36
Five Points	7	15	0	0	2	6
Flint City	0	0	0	0	0	0
Flomaton	41	55	1	1	7	12
Floral	28	39	0	0	10	6
Florence	1,543	1,550	4	3	320	318
Foley	952	778	2	0	288	209
Forkland	0	3	0	0	0	3
Fort Deposit	3	18	0	1	1	10
Fort Payne	451	193	4	2	56	45
Franklin	9	8	1	0	2	3
Frisco City	28	19	0	1	18	16
Fruithurst	0	3	0	0	0	1
Fulton	13	12	0	0	14	8
Fultondale	331	382	1	1	86	97

CITY	NUMBER OF CRASHES		PERSONS KILLED		PERSONS INJURED	
	2016	2017	2016	2017	2016	2017
Fyffe	20	29	0	0	5	7
Gadsden	1,858	1,778	9	7	685	602
Gainesville	1	0	0	0	0	0
Gantt	7	3	0	0	3	1
Gantts Quarry	0	0	0	0	0	0
Garden City	9	7	1	1	6	1
Gardendale	307	362	1	1	75	72
Gaylesville	2	5	0	0	4	2
Geiger	0	0	0	0	0	0
Geneva	91	78	0	1	23	23
Georgiana	32	34	0	0	19	17
Geraldine	27	36	1	0	14	16
Gilbertown	23	22	0	0	8	7
Glen Allen	0	0	0	0	0	0
Glencoe	133	115	3	1	36	61
Glenwood	1	1	0	0	0	0
Goldville	0	2	0	0	0	1
Good Hope	77	74	0	1	22	18
Goodwater	27	33	2	0	11	11
Gordo	26	41	0	0	11	14
Gordon	2	1	0	1	1	0
Gordonville	2	0	0	0	0	0
Goshen	4	1	0	0	0	0
Grant	15	15	0	0	2	4
Graysville	17	5	0	0	6	0
Greensboro	64	79	0	0	34	26
Greenville	287	306	3	0	77	88
Grimes	15	11	0	0	5	9
Grove Hill	54	57	3	0	22	20
Gu-Win	1	0	0	0	0	0
Guin	35	28	0	0	14	13
Gulf Shores	674	606	3	1	159	125
Guntersville	568	512	3	2	149	114
Gurley	41	42	0	0	16	27
Hackleburg	11	17	0	0	8	6
Haleburg	1	2	0	0	0	0
Haleyville	124	115	1	1	44	32
Hamilton	151	156	2	0	43	55
Hammondville	9	7	0	1	4	1
Hanceville	107	88	0	0	28	28

CITY	NUMBER OF CRASHES		PERSONS KILLED		PERSONS INJURED	
	2016	2017	2016	2017	2016	2017
Harpersville	68	72	0	1	34	34
Hartford	47	28	0	0	9	8
Hartselle	395	420	1	2	96	89
Hayden	35	56	0	0	16	16
Hayneville	15	16	0	1	9	13
Headland	96	102	0	1	25	34
Heath	4	0	1	0	1	0
Heflin	61	62	2	0	31	21
Helena	256	247	0	1	57	37
Henagar	37	45	0	2	16	15
Higdon	8	9	0	1	2	4
Highland Lake	1	2	0	0	0	0
Hillsboro	1	3	1	0	1	1
Hobson City	9	5	0	0	5	2
Hodges	3	1	0	0	2	0
Hokes Bluff	94	73	0	0	61	38
Holly Pond	19	18	0	0	9	1
Hollywood	16	27	0	0	10	17
Homewood	1,657	1,835	0	0	256	299
Hoover	3,258	3,276	8	5	622	572
Hornhill	3	0	2	0	0	0
Hueytown	253	166	1	0	53	39
Huntsville	8,984	8,832	24	19	2,653	2,409
Hurtsboro	4	5	0	0	1	1
Hytop	4	0	0	0	1	0
Ider	13	16	0	0	10	12
Indian Springs	12	14	0	0	2	3
Irondale	263	234	0	1	88	84
Jackson	155	131	1	3	60	43
Jacksons Gap	18	19	0	0	7	4
Jacksonville	315	293	0	0	118	132
Jasper	686	720	1	3	196	174
Jemison	61	86	1	0	23	26
Kansas	0	0	0	0	0	0
Kelly	0	0	0	0	0	0
Kennedy	4	3	0	0	0	1
Killen	61	83	0	1	20	29
Kimberly	29	34	0	0	15	12
Kinsey	16	31	1	0	5	11
Kinston	7	6	0	0	5	1



COMPARATIVE City Statistics

2016 VS. 2017 (continued)

CITY	NUMBER OF CRASHES		PERSONS KILLED		PERSONS INJURED	
	2016	2017	2016	2017	2016	2017
Lafayette	72	67	3	1	15	19
Lake View	19	22	0	0	6	8
Lakeview	1	6	0	0	0	1
Lanett	288	267	0	2	74	66
Langston	2	0	0	0	0	0
Leeds	251	244	1	0	95	81
Leesburg	48	35	7	0	19	15
Leighton	7	7	0	0	10	8
Lester	0	2	0	0	0	1
Level Plains	32	33	0	1	10	12
Lexington	14	13	0	0	2	5
Libertyville	0	0	0	0	0	0
Lincoln	309	280	4	1	79	85
Linden	41	41	1	1	11	10
Lineville	45	35	0	0	9	6
Lipscomb	9	10	0	0	7	3
Lisman	4	4	0	0	1	5
Littleville	25	20	1	1	22	12
Livingston	54	58	0	1	26	13
Loachapoka	5	6	0	0	1	1
Lockhart	5	5	0	0	0	0
Locust Fork	12	9	0	0	4	2
Louisville	1	0	0	0	0	0
Lowndesboro	1	2	1	1	1	0
Loxley	170	199	1	4	55	80
Luverne	78	65	0	0	29	24
Lynn	9	7	0	0	2	5
Macedonia	0	0	0	0	0	0
Madison	1,249	1,302	5	2	321	378
Madrid	2	1	0	0	2	0
Malvern	12	8	1	0	6	9
Maplesville	30	14	0	1	8	6
Margaret	24	28	0	1	6	14
Marion	11	0	0	0	7	0
Maytown	0	0	0	0	0	0
Mcintosh	20	21	1	0	14	11
Mckenzie	4	3	0	1	1	2
Mcmullen	0	0	0	0	0	0
Memphis	0	0	0	0	0	0
Mentone	10	10	0	0	3	4

CITY	NUMBER OF CRASHES		PERSONS KILLED		PERSONS INJURED	
	2016	2017	2016	2017	2016	2017
Midfield	215	205	1	2	84	87
Midland City	72	88	0	4	26	22
Midway	0	5	0	0	0	3
Millbrook	462	459	3	0	232	167
Millport	0	1	0	0	0	0
Millry	8	15	0	0	6	10
Mobile	11,867	11,933	34	31	3,013	3,123
Monroeville	160	125	0	0	83	45
Montevallo	206	232	3	0	59	38
Montgomery	9,332	9,356	25	14	3,351	3,377
Moody	356	309	0	0	76	76
Moores Crossroads	0	0	0	0	0	0
Mooresville	1	0	0	0	2	0
Morris	24	21	0	0	2	9
Mosses	3	5	0	0	1	1
Moulton	109	121	0	0	37	56
Moundville	87	61	1	0	42	27
Mountain Brook	653	726	0	0	131	117
Mountainboro	4	5	0	0	3	2
Mt. Vernon	42	0	1	0	30	0
Mulga	2	0	0	0	4	0
Munford	47	51	0	0	24	21
Muscle Shoals	678	716	2	1	150	128
Myrtlewood	0	1	0	0	0	2
Napier Field	2	2	0	0	0	0
Nauvoo	1	3	0	0	0	1
Nectar	3	0	0	0	5	0
Needham	0	0	0	0	0	0
New Brockton	15	14	0	0	8	5
New Hope	47	68	1	2	17	41
New Site	13	13	0	0	10	4
Newbern	1	0	1	0	2	0
Newsome	0	0	0	0	0	0
Newton	49	31	1	0	32	8
Newville	3	0	0	0	1	0
North Bibb	0	0	0	0	0	0
North Courtland	5	9	0	0	1	0
North Johns	1	0	0	0	0	0
Northport	1,209	1,187	1	2	266	248
Notasulga	19	20	0	0	4	5

CITY	NUMBER OF CRASHES		PERSONS KILLED		PERSONS INJURED	
	2016	2017	2016	2017	2016	2017
Oak Grove	13	13	0	0	8	7
Oak Hill	0	0	0	0	0	0
Oakman	4	7	0	0	1	1
Odenville	114	138	0	1	36	35
Ohatchee	32	25	0	0	8	11
Oneonta	146	175	1	1	34	34
Onycha	1	1	0	0	0	0
Opelika	2,528	2,279	4	5	577	536
Opp	115	109	0	4	62	55
Orange Beach	356	389	2	2	116	84
Orrville	6	5	0	0	5	2
Owens Crossroads	50	41	0	0	27	12
Oxford	932	917	2	1	290	260
Ozark	368	320	3	3	98	69
Paint Rock	3	14	0	4	1	13
Parrish	19	19	0	0	2	6
Pelham	1,237	1,337	3	0	197	160
Pell City	447	402	3	0	112	101
Pennington	1	2	0	1	0	1
Petrey	2	1	0	0	0	0
Phenix City	2,130	2,170	6	4	619	715
Phil Campbell	22	18	1	0	9	9
Pickensville	4	8	0	0	2	0
Piedmont	113	123	0	0	37	35
Pike Road	43	51	3	0	14	15
Pinckard	22	19	0	0	10	13
Pine Apple	5	2	0	0	5	2
Pine Hill	31	21	0	0	18	8
Pine Ridge	4	0	0	0	1	0
Pisgah	3	3	0	0	2	3
Pleasant Grove	68	70	0	1	23	24
Pollard	1	0	0	0	1	0
Powell	13	22	0	0	9	14
Prattville	1,089	1,048	1	2	287	327
Priceville	132	113	3	0	33	29
Prichard	906	936	3	3	351	515
Providence	0	3	0	1	0	0
Ragland	18	14	1	0	2	7
Rainbow City	313	329	0	0	67	75
Rainsville	171	145	0	2	42	59

CITY	NUMBER OF CRASHES		PERSONS KILLED		PERSONS INJURED	
	2016	2017	2016	2017	2016	2017
Ranburne	11	10	0	0	7	3
Red Bay	62	64	0	1	16	20
Red Level	6	2	2	1	4	0
Reece City	12	15	0	1	5	9
Reform	38	39	0	0	11	14
Rehobeth	7	7	0	0	4	4
Repton	6	4	0	0	5	5
Ridgeville	0	0	0	0	0	0
River Falls	14	19	0	0	15	14
Riverside	41	33	2	0	12	20
Riverview	0	3	0	0	0	2
Roanoke	127	113	1	0	44	21
Robertsdale	217	206	0	0	40	34
Rockford	7	6	0	0	2	2
Rogersville	55	64	0	0	15	13
Roosevelt City	0	1	0	0	0	0
Rosa	3	7	0	0	4	4
Rural Autauga	496	481	14	12	151	157
Rural Baldwin	1,402	1,414	22	14	640	553
Rural Barbour	147	130	2	3	67	64
Rural Bibb	181	188	6	6	65	91
Rural Blount	583	546	15	22	258	270
Rural Bullock	86	74	3	3	58	51
Rural Butler	384	373	11	13	147	148
Rural Calhoun	992	1,093	20	14	470	500
Rural Chambers	236	212	7	1	107	85
Rural Cherokee	289	287	6	5	149	130
Rural Chilton	556	579	17	7	200	261
Rural Choctaw	95	130	5	4	62	72
Rural Clarke	116	124	2	1	56	72
Rural Clay	100	104	5	1	68	54
Rural Cleburne	381	349	4	3	135	119
Rural Coffee	348	287	12	6	197	149
Rural Colbert	415	405	9	16	241	220
Rural Conecuh	248	260	6	5	129	105
Rural Coosa	221	217	8	6	105	93
Rural Covington	249	253	3	6	109	130
Rural Crenshaw	162	170	4	3	72	73
Rural Cullman	1,079	1,165	20	19	411	422
Rural Dale	247	253	9	2	113	124



COMPARATIVE City Statistics

2016 VS. 2017 (continued)

CITY	NUMBER OF CRASHES		PERSONS KILLED		PERSONS INJURED	
	2016	2017	2016	2017	2016	2017
Rural Dallas	402	401	8	8	239	226
Rural Dekalb	471	418	13	12	215	164
Rural Elmore	640	629	13	5	201	221
Rural Escambia	404	418	6	12	203	207
Rural Etowah	462	495	12	9	209	230
Rural Fayette	134	135	1	7	77	74
Rural Franklin	250	257	3	6	122	129
Rural Geneva	222	231	2	8	85	99
Rural Greene	247	260	5	5	95	99
Rural Hale	160	171	3	6	92	102
Rural Henry	121	120	5	4	63	52
Rural Houston	467	482	11	3	216	206
Rural Jackson	335	340	12	7	175	164
Rural Jefferson	2,726	3,736	22	14	638	902
Rural Lamar	95	92	2	3	50	45
Rural Lauderdale	630	595	9	10	270	218
Rural Lawrence	383	367	8	7	187	198
Rural Lee	813	831	9	9	293	320
Rural Limestone	860	932	23	21	347	320
Rural Lowndes	319	276	4	9	133	105
Rural Macon	516	499	12	15	168	179
Rural Madison	1,907	2,004	18	14	690	734
Rural Marengo	147	162	6	4	113	100
Rural Marion	161	215	3	4	105	128
Rural Marshall	599	591	16	5	284	339
Rural Mobile	2,051	2,058	33	38	838	788
Rural Monroe	172	153	7	5	103	88
Rural Montgomery	791	798	10	5	258	299
Rural Morgan	665	675	6	11	271	305
Rural Perry	73	75	2	2	44	44
Rural Pickens	155	148	5	0	81	75
Rural Pike	323	333	5	11	138	138
Rural Randolph	164	157	4	4	77	94
Rural Russell	543	498	24	12	296	260
Rural Shelby	1,510	1,401	11	10	431	338
Rural St. Clair	746	790	14	18	306	276
Rural Sumter	183	198	4	6	83	103
Rural Talladega	852	929	21	21	435	354
Rural Tallapoosa	222	212	8	3	93	72
Rural Tuscaloosa	1,796	1,808	32	20	637	593

CITY	NUMBER OF CRASHES		PERSONS KILLED		PERSONS INJURED	
	2016	2017	2016	2017	2016	2017
Rural Walker	673	703	22	18	329	380
Rural Washington	150	183	3	6	101	132
Rural Wilcox	96	102	3	5	75	75
Rural Winston	143	151	10	7	71	91
Russellville	238	224	0	1	87	97
Rutledge	5	7	0	0	2	0
Samson	40	27	0	0	7	22
Sand Rock	9	13	0	0	6	3
Sanford	4	7	0	0	1	7
Saraland	571	628	0	1	160	179
Sardis City	63	51	1	3	35	22
Satsuma	66	94	0	1	22	32
Scottsboro	583	537	2	2	156	188
Section	20	30	0	0	0	1
Selma	665	550	3	3	259	219
Sheffield	273	233	1	1	87	58
Shiloh	0	1	0	0	0	1
Shorter	0	6	0	0	0	0
Silas	8	2	0	0	3	0
Siluria	1	0	0	0	0	0
Silverhill	45	63	1	0	7	22
Sipsey	5	5	0	0	2	1
Skyline	3	12	0	0	4	4
Slocomb	34	38	0	0	9	17
Smiths Station	58	64	0	0	35	20
Snead	47	58	1	0	19	29
Somerville	22	31	2	1	5	21
Southside	122	95	1	0	46	30
Spanish Fort	5	4	0	0	3	1
Springville	70	87	0	0	10	14
St. Florian	40	56	0	1	12	12
Steele	6	7	0	0	0	2
Stevenson	75	89	2	3	26	24
Sulligent	29	38	0	1	11	13
Sumiton	99	100	0	0	35	35
Summerdale	100	102	2	0	40	30
Susan Moore	7	13	0	0	0	8
Sweet Water	4	1	0	0	4	0
Sylacauga	280	326	0	1	56	69
Sylvania	16	40	0	1	5	25

CITY	NUMBER OF CRASHES		PERSONS KILLED		PERSONS INJURED	
	2016	2017	2016	2017	2016	2017
Sylvania Springs	1	1	0	0	0	0
Talladega	350	290	3	2	134	103
Talladega Springs	0	3	0	0	0	1
Tallassee	190	186	1	1	46	78
Tarrant City	301	348	1	3	88	81
Taylor	31	23	0	1	30	8
Thomaston	7	1	1	0	1	0
Thomasville	128	122	0	0	50	57
Thorsby	35	26	0	0	14	5
Town Creek	16	16	0	0	3	6
Toxey	0	0	0	0	0	0
Trafford	0	0	0	0	0	0
Triana	4	5	0	0	2	2
Trinity	50	41	1	0	10	5
Troy	741	731	0	0	184	159
Trussville	960	929	1	2	212	228
Tuscaloosa	5,241	5,167	12	12	1,459	1,395
Tuscumbia	266	273	4	0	64	65
Tuskegee	202	190	0	0	86	70
Twin	1	0	0	0	0	0
Union	0	0	0	0	0	0
Union Grove	0	1	0	0	0	0
Union Springs	102	110	1	3	34	45
Uniontown	29	27	2	0	23	24
Valley	343	332	3	1	78	100
Valley Grande	10	17	0	0	5	13
Valley Head	14	9	0	1	2	3
Vance	38	46	0	1	26	17
Vernon	44	56	0	0	15	34
Vestavia Hills	964	956	3	0	132	128
Vina	2	4	0	0	3	3
Vincent	24	24	0	1	16	22
Vinemont	14	18	0	1	5	6
Vredenburgh	0	0	0	0	0	0
Wadley	9	5	0	1	6	5
Waldo	4	5	0	0	1	3
Walnut Grove	16	19	0	0	7	17
Warrior	72	92	0	0	24	33
Waterloo	2	3	0	0	0	3
Waverly	2	0	0	0	1	0

CITY	NUMBER OF CRASHES		PERSONS KILLED		PERSONS INJURED	
	2016	2017	2016	2017	2016	2017
Weaver	35	26	0	0	6	7
Webb	24	27	0	0	14	13
Wedowee	45	44	0	0	17	9
West Blocton	30	27	1	0	12	15
West End	0	0	0	0	0	0
West Jefferson	1	0	0	0	0	0
West Point	23	15	0	0	10	5
Weston	1	0	0	0	1	0
Westover	5	8	0	0	2	4
Wetumpka	474	503	4	0	159	182
Whitehall	6	5	0	0	1	5
Whites Chapel	0	0	0	0	0	0
Wilmer	1	8	0	0	0	4
Wilsonville	11	21	0	1	5	9
Wilton	4	3	0	0	1	1
Winfield	96	110	1	4	41	52
Woodland	5	11	0	0	1	3
Woodstock	47	53	0	2	10	14
Woodville	12	16	0	0	10	8
Yellow Bluff	1	0	0	0	1	0
York	31	20	0	1	12	1
Unknown	92	2	0	0	25	0
Total	155,907	156,952	1,089	948	47,653	47,742



Transforming ALABAMA'S SAFETY CULTURE

Reaching Alabama

College sports occupy a role at the center of daily life in the South. And in Alabama, college football is a really big deal. According to [The New York Times](#), Alabama has the **highest** concentration of college football fans in the country.

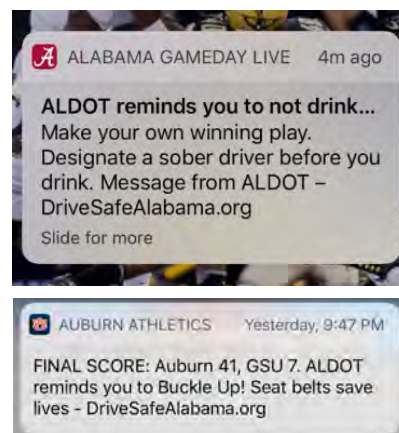
Central to the ALDOT college sports partnership campaign were the two public service announcements about seat belt usage created with each university's mascot. The University of Alabama mascot, Big Al, and Auburn University mascot, Aubie, delivered a seat belt message in a humorous way to appeal and resonate with the majority of Alabama residents ages **16+**. These PSAs appeared during football games on the video board in each university's football stadium and on television.

Along with promoting seat belt usage, ALDOT's partnership with the college football programs also incorporated the impaired driving message—**Remember to find a sober driver**—with the following media:

- **Gameday Apps with each University**
- **Radio Ads**
- **Digital Ads**
- **Print Ads**

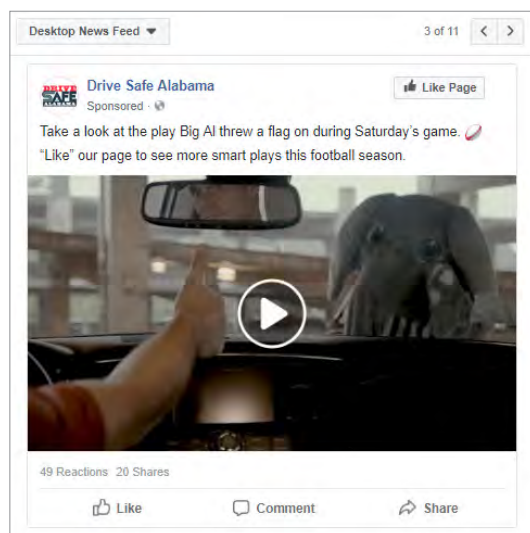
54%

of Alabama **Facebook** users were fans of a college football team.

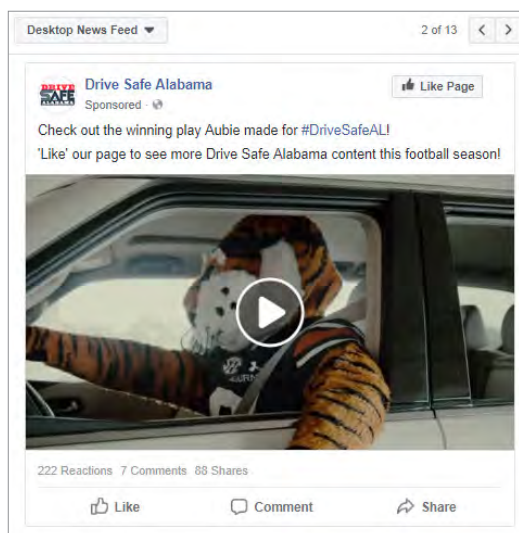


Push Notifications

Seat Belt Safety on Social Media

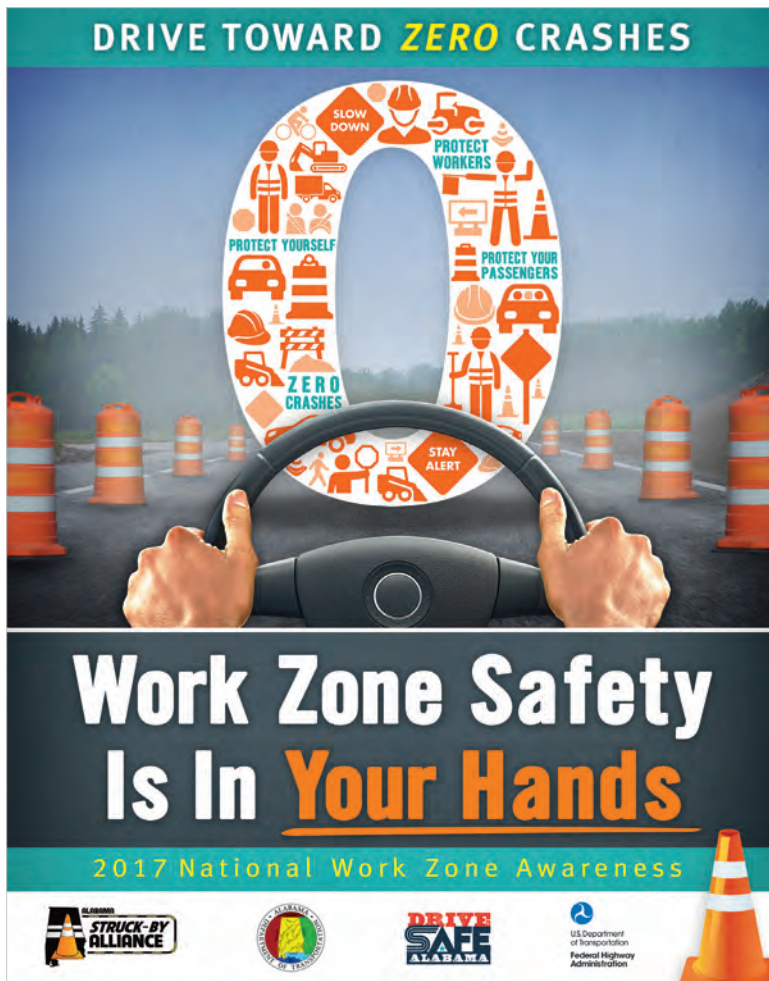


“Big Al” PSA—University of Alabama
youtube.com/watch?v=Dx57SeuhIsg



“Aubie” PSA—Auburn University
youtube.com/watch?v=caDTYK3qaaA

Work Zone Safety Campaign



Poster Advertising



Outdoor Advertising

Participating in National Work Zone Awareness Week brought attention to the more than 3,000 Alabama work zone crashes of 2017. ALDOT held a work zone safety press conference near Decatur, AL, and gave special recognition to an ALDOT employee who died in a work zone crash in 2016.



Press Conference

Transforming ALABAMA'S SAFETY CULTURE *(continued)*

URKeys2DRV Outreach



Auto crashes are the number one cause of teen deaths in the United States. ALDOT joined with other safety organizations to host interactive educational events across Alabama where high school students learned about road safety and making good choices.

Bicycle 3 Feet Law PSA



Poster



Bicycle PSA

<https://www.youtube.com/watch?v=>

Informing the public of new traffic safety laws or changes to traffic safety laws is one of the ways ALDOT promotes a strong safety culture.

ALDOT ran a public service announcement on television, radio and social media to help reduce the number of bicycle and motor vehicle crashes through compliance with the 2015 amendment to Alabama's safe passing law. That law requires motorists to allow a minimum of three feet of distance when passing a bicycle.



ALABAMA DEPARTMENT OF TRANSPORTATION

dot.state.al.us

MEDIA & COMMUNITY RELATIONS BUREAU

Central Office:
1409 Coliseum Boulevard, Montgomery, Alabama 36110

TONY HARRIS
Bureau Chief &
Government Relations Manager
334.242.6552
harrist@dot.state.al.us

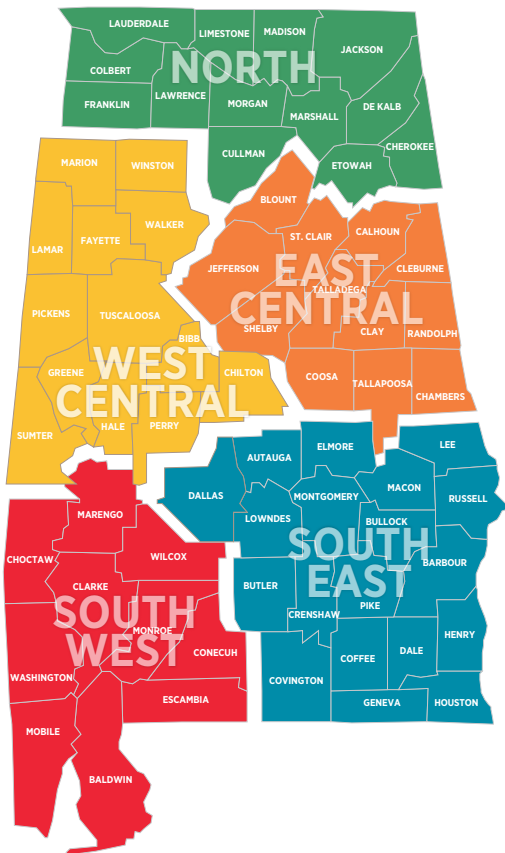
ALLISON GREEN
Marketing &
Communication Specialist
Drive Safe Alabama Coordinator
334.353.6534
greena@dot.state.al.us

HALEY ANSLEY
Public Information Officer
334.242.6729
ansleyh@dot.state.al.us

JOSH PHILLIPS
Public Information Officer
334.242.6730
phillipsjo@dot.state.al.us

AMANDA DEEM
Public Information Officer
334.242.6963
deema@dot.state.al.us

REGIONAL PUBLIC INFORMATION OFFICES



NORTH REGION
1525 Perimeter Parkway
Huntsville, AL 35086

SOUTHWEST REGION
1701 I-65 West Service Road North
Mobile, AL 36618

SETH BURKETT
Public Information Officer
256.505.4964
burkett@dot.state.al.us

KATELYN TURNER
Public Information Officer
251.470.8375
turnerke@dot.state.al.us
Twitter @ALDOTMobileArea

WEST CENTRAL REGION
204 Marina Drive
Tuscaloosa, AL 35406

SOUTHEAST REGION
Capitol Commerce Center
100 Capitol Commerce Boulevard
Building B, Suite 210
Montgomery, AL 36117

JOHN MCWILLIAMS
Public Information Officer
205.562.3115
mcwilliamsj@dot.state.al.us

BRANTLEY KIRK
Public Information Officer
334.353.6862
kirkb@dot.state.al.us

EAST CENTRAL REGION
100 Corporate Parkway, Suite 450
Hoover, AL 35242

LINDA CROCKETT
Public Information Officer
205.327.4973
crockettl@dot.state.al.us



DRIVESAFEALABAMA.ORG



DriveSafeAlabama.org



ALABAMA DEPARTMENT OF TRANSPORTATION

www.dot.state.al.us | Contact us at aldotinfo@dot.state.al.us

