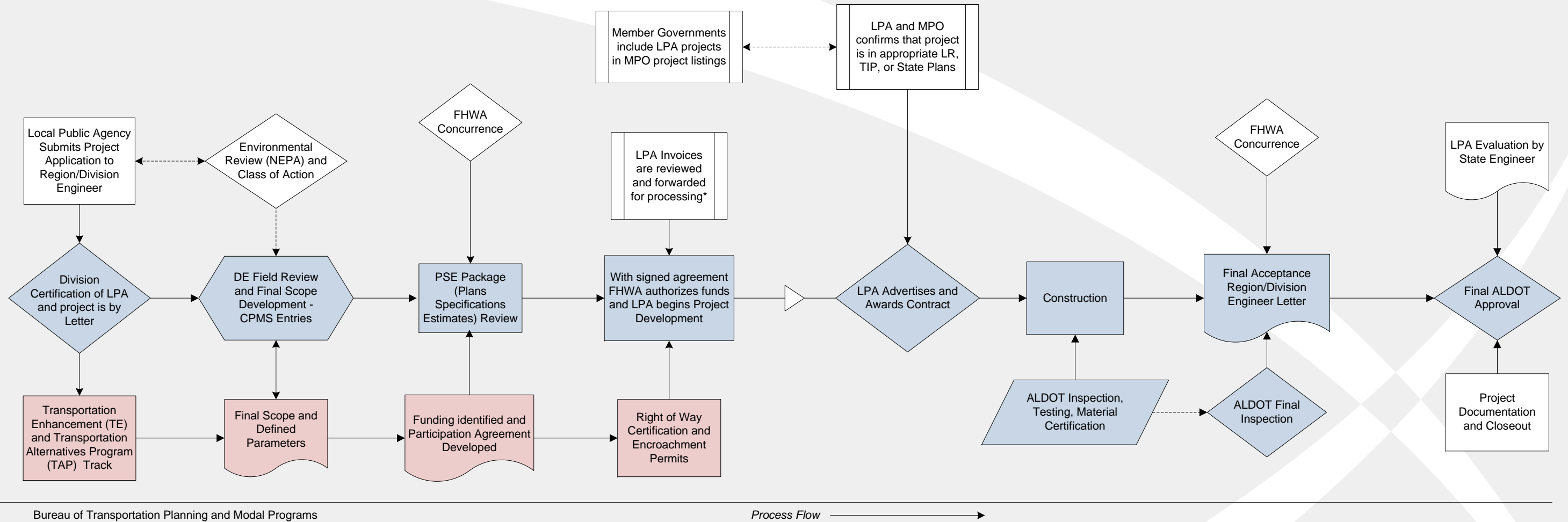


# Alabama Local Public Agency (LPA) Project Process

Projects can originate in a variety of ways, but introduction into the ALDOT system is through the office of the Region or Division Engineer.



**Transportation Enhancement (TE)** projects will continue to process through the Special Programs Office of Modal Programs in the Bureau of Transportation Planning and Modal Programs (red) until all funds are expended. All other projects will process through Division Offices (blue.) **Transportation Alternatives Program (TAP)** projects may be processed at Division level with coordination through Special Programs.

**County Transportation Bureau** - County projects that are being let through County Transportation Bureau will continue to be processed in that manner. However, if a County chooses to apply for a project using LPA federal funding, and then administer the project, the project will be processed using the normal LPA track. (blue)

## Local Public Agency (LPA) Process

Primary agencies, bureaus, and groups:

- Local Public Agencies (Provisional)
- Division Offices, ALDOT (Provisional)
- Bureau of Transportation Planning and Modal Programs
  - Metropolitan Planning Section (Central Office)
  - Special Programs (Central Office) – TE projects only
- Design Bureau
  - Environmental Technical Section (ETS)(Central Office)
- Metropolitan Planning Organizations (MPO) (Provisional)
- Regional Commissions (Provisional)

## Other Bureaus and Offices Active in the Process

- Pre-construction
- Bridge
- Design
- Right of Way
- Office Engineer
- Finance
- Computer Services
- Training
- County Transportation

